



Home report


105 Bent Tree Road, Beechwood Shores, Moneta, Bedford County, Virginia, United States, 24121





Property summary


 **1** Garages


 **3** Bedrooms

 **2** Bathrooms

 **0** Half baths

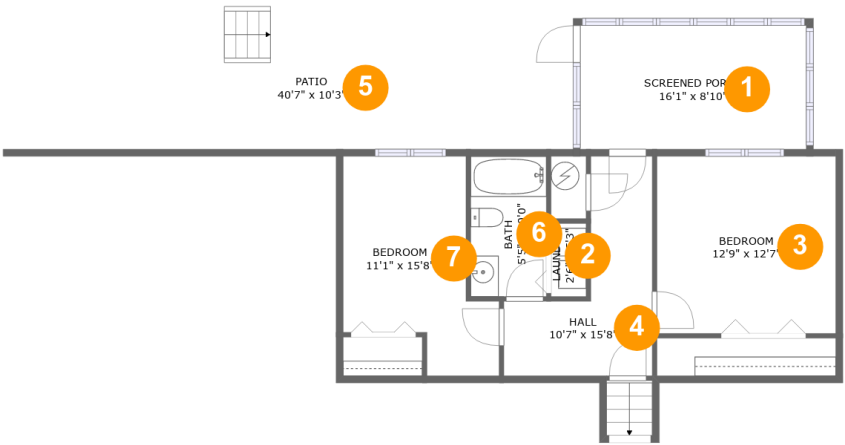
 **3** Floors

 **1,834** Gross living area sqft

 **3,327** Total sqft

Home report

105 Bent Tree Road, Beechwood Shores, Moneta, Bedford County, Virginia, United States, 24121



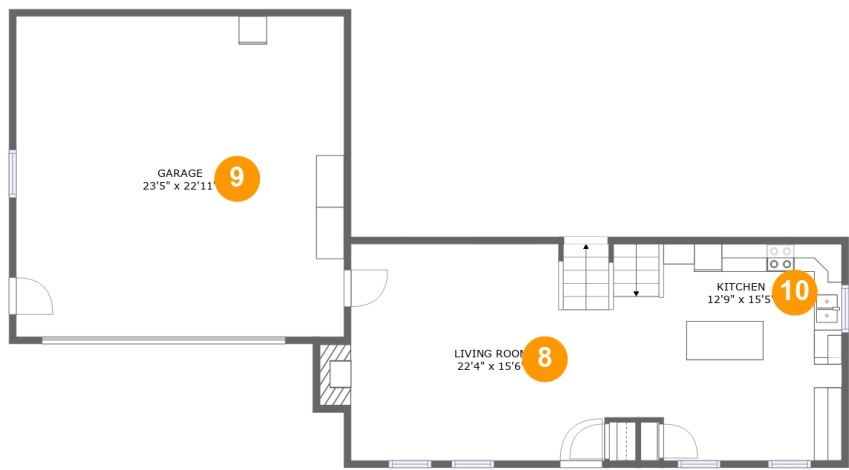
Room dimensions

Floor 1 Total sqft: 1206 Living area: 630

#		Dimensions	sqft	Counted as living area
1	Screened Porch	16'1" x 8'10"	142 sq. ft	No
2	Laundry	2'6" x 5'3"	13 sq. ft	Yes
3	Bedroom	12'9" x 12'7"	161 sq. ft	Yes
4	Hall	10'7" x 15'8"	101 sq. ft	Yes
5	Patio	40'7" x 10'3"	417 sq. ft	No
6	Bath	5'5" x 10'0"	54 sq. ft	Yes
7	Bedroom	11'1" x 15'8"	131 sq. ft	Yes

Home report

105 Bent Tree Road, Beechwood Shores, Moneta, Bedford County, Virginia, United States, 24121



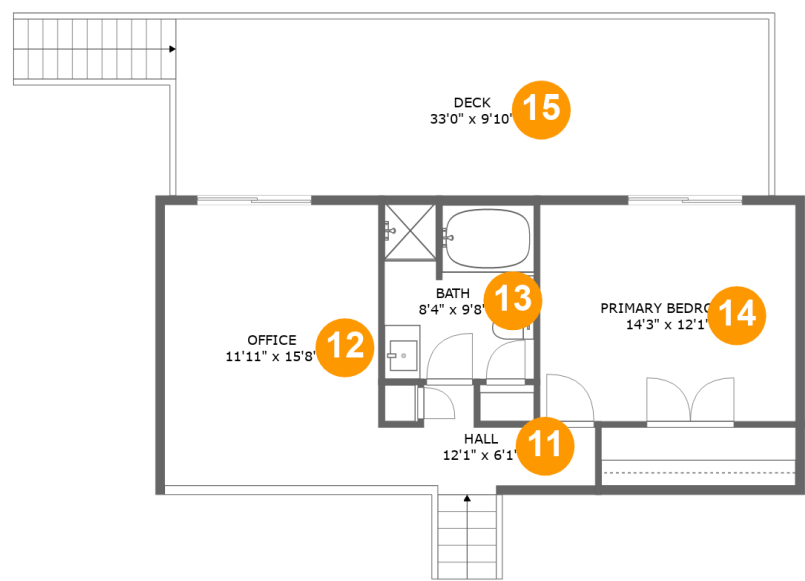
Room dimensions

Floor 2 Total sqft: 1187 Living area: 595

#		Dimensions	sqft	Counted as living area
8	Living Room	22'4" x 15'6"	342 sq. ft	Yes
9	Garage	23'5" x 22'11"	537 sq. ft	No
10	Kitchen	12'9" x 15'5"	197 sq. ft	Yes

Home report

105 Bent Tree Road, Beechwood Shores, Moneta, Bedford County, Virginia, United States, 24121

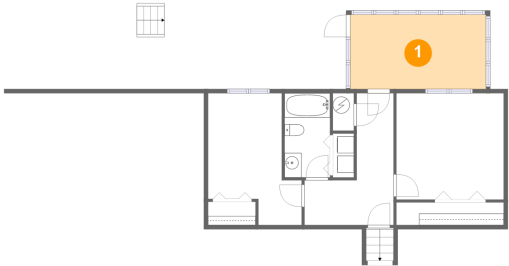


Room dimensions

Floor 3 Total sqft: 934 Living area: 609

#		Dimensions	sqft	Counted as living area
11	Hall	12'1" x 6'1"	63 sq. ft	Yes
12	Office	11'11" x 15'8"	186 sq. ft	Yes
13	Bath	8'4" x 9'8"	79 sq. ft	Yes
14	Primary Bedroom	14'3" x 12'1"	172 sq. ft	Yes
15	Deck	33'0" x 9'10"	325 sq. ft	No

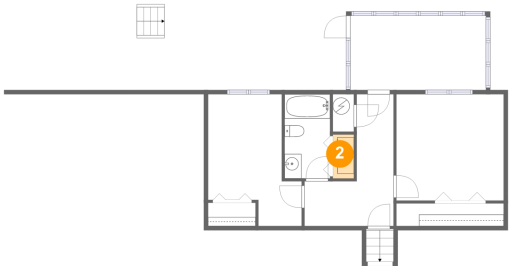
1 Floor 1 - Screened Porch



Dimensions: 16'1" x 8'10"
Area: 142 sq. ft
Counted as living area: No

Heated: No
Finished: Yes
Enclosed: No
Contiguous: Yes
Permitted: Yes
Wet space: No
Addition: No
Conversion: No

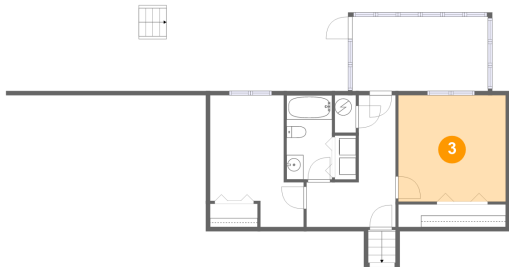
2 Floor 1 - Laundry



Dimensions: 2'6" x 5'3"
Area: 13 sq. ft
Counted as living area: Yes

Heated: Yes
Finished: Yes
Enclosed: Yes
Contiguous: Yes
Permitted: Yes
Wet space: No
Addition: No
Conversion: No

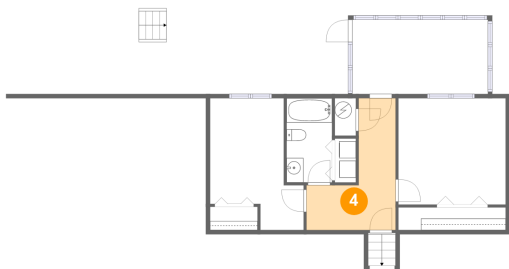
3 Floor 1 - Bedroom



Dimensions: 12'9" x 12'7"
Area: 161 sq. ft
Counted as living area: Yes

Heated: Yes
Finished: Yes
Enclosed: Yes
Contiguous: Yes
Permitted: Yes
Wet space: No
Addition: No
Conversion: No

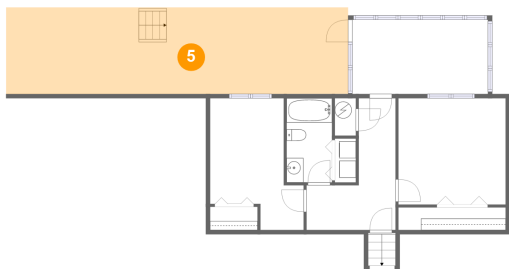
4 Floor 1 - Hall



Dimensions: 10'7" x 15'8"
Area: 101 sq. ft
Counted as living area: Yes

Heated: Yes
Finished: Yes
Enclosed: Yes
Contiguous: Yes
Permitted: Yes
Wet space: No
Addition: No
Conversion: No

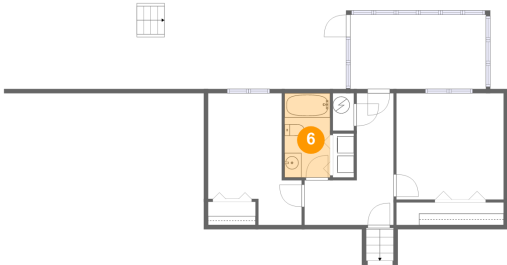
5 Floor 1 - Patio



Dimensions: 40'7" x 10'3"
Area: 417 sq. ft
Counted as living area: No

Heated: No
Finished: Yes
Enclosed: No
Contiguous: Yes
Permitted: Yes
Wet space: No
Addition: No
Conversion: No

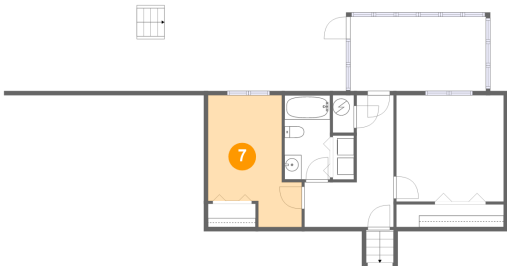
6 Floor 1 - Bath



Dimensions: 5'5" x 10'0"
Area: 54 sq. ft
Counted as living area: Yes

Heated: Yes
Finished: Yes
Enclosed: Yes
Contiguous: Yes
Permitted: Yes
Wet space: Yes
Addition: No
Conversion: No

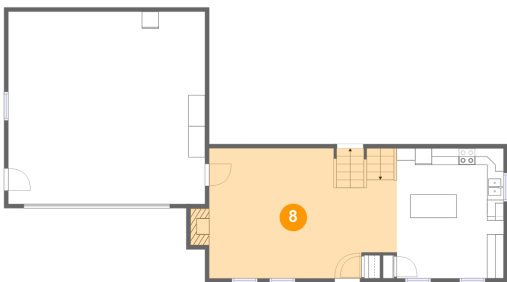
7 Floor 1 - Bedroom



Dimensions: 11'1" x 15'8"
Area: 131 sq. ft
Counted as living area: Yes

Heated: Yes
Finished: Yes
Enclosed: Yes
Contiguous: Yes
Permitted: Yes
Wet space: No
Addition: No
Conversion: No

8 Floor 2 - Living Room

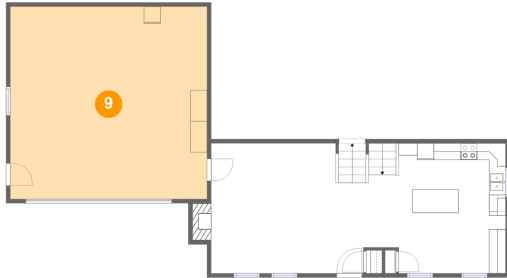


Dimensions: 22'4" x 15'6"
Area: 342 sq. ft
Counted as living area: Yes

Heated: Yes
Finished: Yes
Enclosed: Yes
Contiguous: Yes
Permitted: Yes
Wet space: No
Addition: No
Conversion: No

105 Bent Tree Road, Beechwood Shores, Moneta, Bedford
County, Virginia, United States, 24121

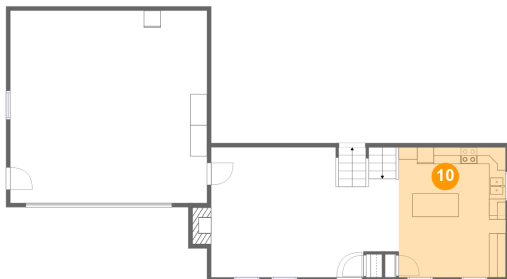
9 Floor 2 - Garage



Dimensions: 23'5" x 22'11"
Area: 537 sq. ft
Counted as living area: No

Heated: No
Finished: No
Enclosed: Yes
Contiguous: Yes
Permitted: Yes
Wet space: No
Addition: No
Conversion: No

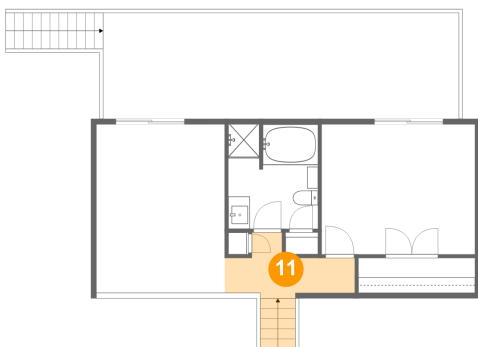
10 Floor 2 - Kitchen



Dimensions: 12'9" x 15'5"
Area: 197 sq. ft
Counted as living area: Yes

Heated: Yes
Finished: Yes
Enclosed: Yes
Contiguous: Yes
Permitted: Yes
Wet space: No
Addition: No
Conversion: No

11 Floor 3 - Hall

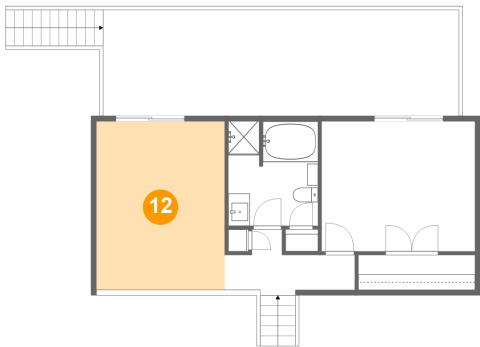


Dimensions: 12'1" x 6'1"
Area: 63 sq. ft
Counted as living area: Yes

Heated: Yes
Finished: Yes
Enclosed: Yes
Contiguous: Yes
Permitted: Yes
Wet space: No
Addition: No
Conversion: No

105 Bent Tree Road, Beechwood Shores, Moneta, Bedford
County, Virginia, United States, 24121

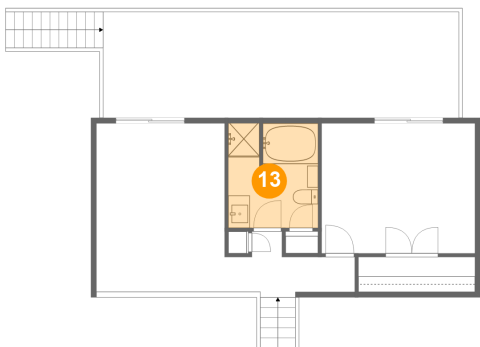
12 Floor 3 - Office



Dimensions: 11'11" x 15'8"
Area: 186 sq. ft
Counted as living area: Yes

Heated: Yes
Finished: Yes
Enclosed: Yes
Contiguous: Yes
Permitted: Yes
Wet space: No
Addition: No
Conversion: No

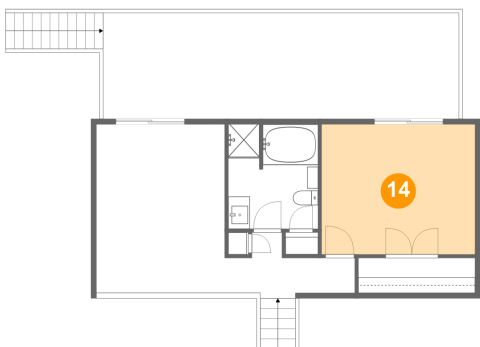
13 Floor 3 - Bath



Dimensions: 8'4" x 9'8"
Area: 79 sq. ft
Counted as living area: Yes

Heated: Yes
Finished: Yes
Enclosed: Yes
Contiguous: Yes
Permitted: Yes
Wet space: Yes
Addition: No
Conversion: No

14 Floor 3 - Primary Bedroom

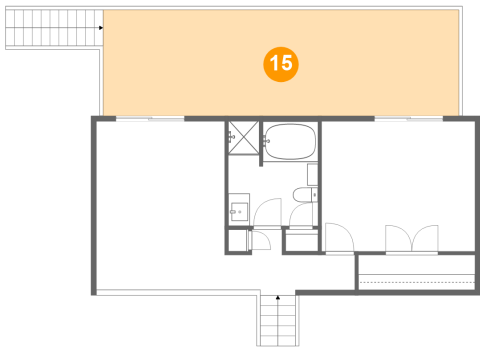


Dimensions: 14'3" x 12'1"
Area: 172 sq. ft
Counted as living area: Yes

Heated: Yes
Finished: Yes
Enclosed: Yes
Contiguous: Yes
Permitted: Yes
Wet space: No
Addition: No
Conversion: No

105 Bent Tree Road, Beechwood Shores, Moneta, Bedford
County, Virginia, United States, 24121

15 Floor 3 - Deck



Dimensions: 33'0" x 9'10"
Area: 325 sq. ft
Counted as living area: No

Heated: No
Finished: Yes
Enclosed: No
Contiguous: Yes
Permitted: Yes
Wet space: No
Addition: No
Conversion: No