

Home report

900 Eldridge Avenue, Oaklyn, Camden County, New Jersey,
United States, 08107




Total Area: 2264 sq. ft

Floor 1: 846 sq. ft, Floor 2: 923 sq. ft, Floor 3: 495 sq. ft

Excluded: Low ceiling 59 sq. ft, Walls: 186 sq. ft

Property summary

 **3** Floors

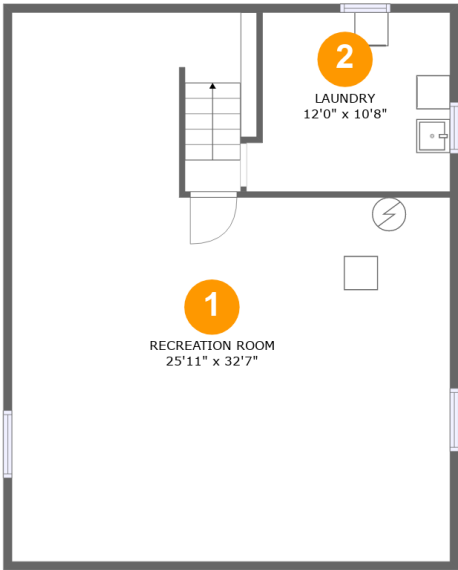
 **3** Bedrooms

 **1** Bathrooms

 **1** Half baths

Home report

900 Eldridge Avenue, Oaklyn, Camden County, New Jersey,
United States, 08107



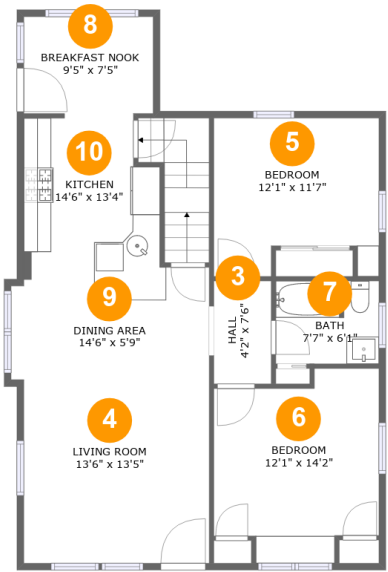
Room dimensions

Floor 1 Total:846sqft Excluded: 0sqft

#		Max Dimensions	sqft	Included
1	Recreation Room	25'11" x 32'7"	713 sq. ft	Yes
2	Laundry	12'0" x 10'8"	121 sq. ft	Yes

Home report

900 Eldridge Avenue, Oaklyn, Camden County, New Jersey,
United States, 08107



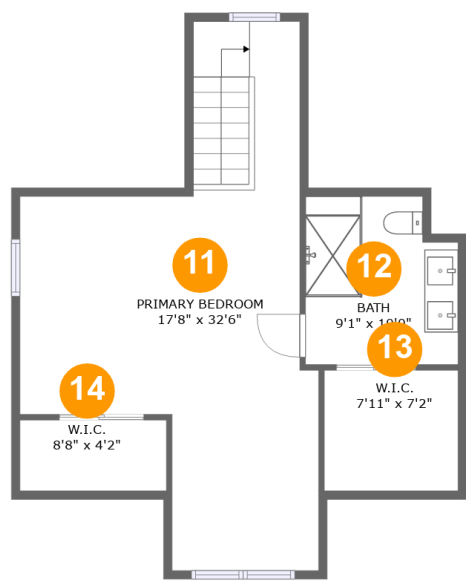
Room dimensions

Floor 2 Total:923sqft Excluded: 0sqft

#		Max Dimensions	sqft	Included
3	Hall	4'2" x 7'6"	32 sq. ft	Yes
4	Living Room	13'6" x 13'5"	182 sq. ft	Yes
5	Bedroom	12'1" x 11'7"	126 sq. ft	Yes
6	Bedroom	12'1" x 14'2"	149 sq. ft	Yes
7	Bath	7'7" x 6'1"	45 sq. ft	Yes
8	Breakfast Nook	9'5" x 7'5"	69 sq. ft	Yes
9	Dining Area	14'6" x 5'9"	84 sq. ft	Yes
10	Kitchen	14'6" x 13'4"	135 sq. ft	Yes

Home report

900 Eldridge Avenue, Oaklyn, Camden County, New Jersey,
United States, 08107



Room dimensions

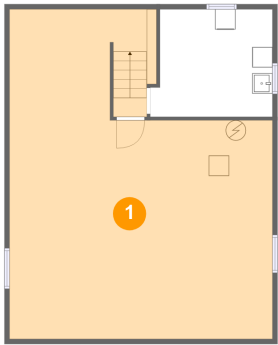
Floor 3 Total:495sqft Excluded: 59sqft

#		Max Dimensions	sqft	Included
11	Primary Bedroom	17'8" x 32'6"	363 sq. ft	Yes
12	Bath	9'1" x 10'0"	66 sq. ft	Yes
13	W.I.C.	7'11" x 7'2"	30 sq. ft	Yes
14	W.I.C.	8'8" x 4'2"	22 sq. ft	Yes

Home report

900 Eldridge Avenue, Oaklyn, Camden County, New Jersey,
United States, 08107

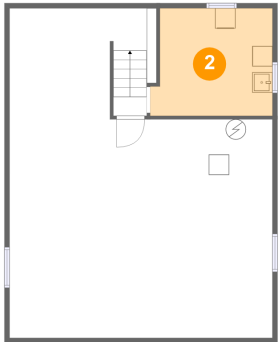
1 Floor 1 - Recreation Room



Max Dimensions: 25'11" x 32'7"
Calculated Area: 713 sq. ft
Included: Yes

Heated: Yes
Finished: Yes
Enclosed: Yes
Contiguous: Yes
Permitted: Yes
Wet space: No
Addition: No
Conversion: No

2 Floor 1 - Laundry



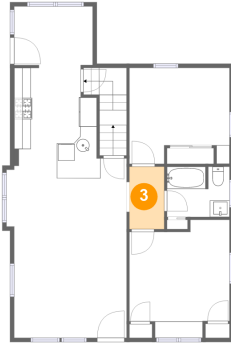
Max Dimensions: 12'0" x 10'8"
Calculated Area: 121 sq. ft
Included: Yes

Heated: Yes
Finished: Yes
Enclosed: Yes
Contiguous: Yes
Permitted: Yes
Wet space: No
Addition: No
Conversion: No

Home report

900 Eldridge Avenue, Oaklyn, Camden County, New Jersey,
United States, 08107

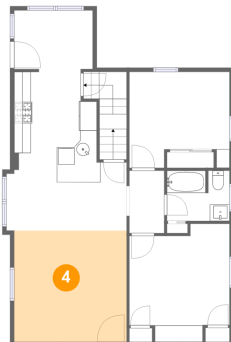
3 Floor 2 - Hall



Max Dimensions: 4'2" x 7'6"
Calculated Area: 32 sq. ft
Included: Yes

Heated: Yes
Finished: Yes
Enclosed: Yes
Contiguous: Yes
Permitted: Yes
Wet space: No
Addition: No
Conversion: No

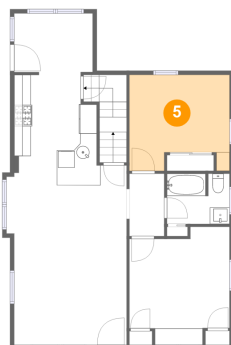
4 Floor 2 - Living Room



Max Dimensions: 13'6" x 13'5"
Calculated Area: 182 sq. ft
Included: Yes

Heated: Yes
Finished: Yes
Enclosed: Yes
Contiguous: Yes
Permitted: Yes
Wet space: No
Addition: No
Conversion: No

5 Floor 2 - Bedroom



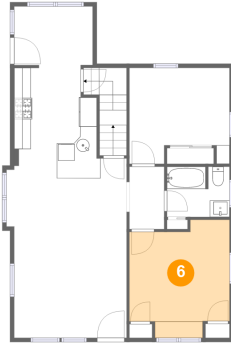
Max Dimensions: 12'1" x 11'7"
Calculated Area: 126 sq. ft
Included: Yes

Heated: Yes
Finished: Yes
Enclosed: Yes
Contiguous: Yes
Permitted: Yes
Wet space: No
Addition: No
Conversion: No

Home report

900 Eldridge Avenue, Oaklyn, Camden County, New Jersey,
United States, 08107

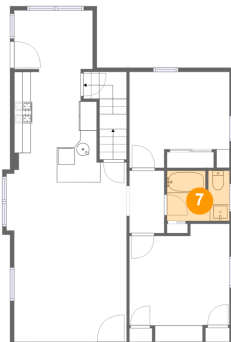
6 Floor 2 - Bedroom



Max Dimensions: 12'1" x 14'2"
Calculated Area: 149 sq. ft
Included: Yes

Heated: Yes
Finished: Yes
Enclosed: Yes
Contiguous: Yes
Permitted: Yes
Wet space: No
Addition: No
Conversion: No

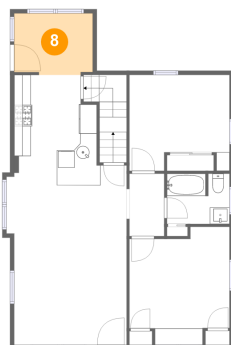
7 Floor 2 - Bath



Max Dimensions: 7'7" x 6'1"
Calculated Area: 45 sq. ft
Included: Yes

Heated: Yes
Finished: Yes
Enclosed: Yes
Contiguous: Yes
Permitted: Yes
Wet space: Yes
Addition: No
Conversion: No

8 Floor 2 - Breakfast Nook

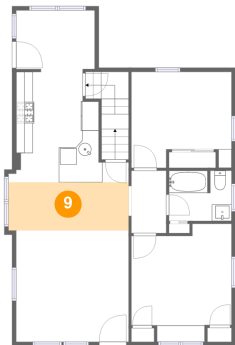


Max Dimensions: 9'5" x 7'5"
Calculated Area: 69 sq. ft
Included: Yes

Heated: Yes
Finished: Yes
Enclosed: Yes
Contiguous: Yes
Permitted: Yes
Wet space: No
Addition: No
Conversion: No

900 Eldridge Avenue, Oaklyn, Camden County, New Jersey,
United States, 08107

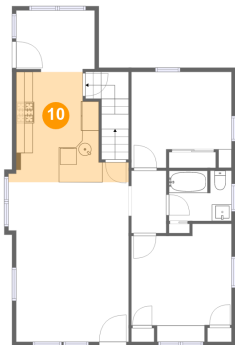
9 Floor 2 - Dining Area



Max Dimensions: 14'6" x 5'9"
Calculated Area: 84 sq. ft
Included: Yes

Heated: Yes
Finished: Yes
Enclosed: Yes
Contiguous: Yes
Permitted: Yes
Wet space: No
Addition: No
Conversion: No

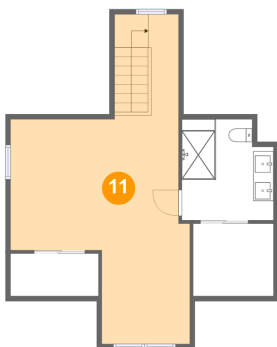
10 Floor 2 - Kitchen



Max Dimensions: 14'6" x 13'4"
Calculated Area: 135 sq. ft
Included: Yes

Heated: Yes
Finished: Yes
Enclosed: Yes
Contiguous: Yes
Permitted: Yes
Wet space: No
Addition: No
Conversion: No

11 Floor 3 - Primary Bedroom



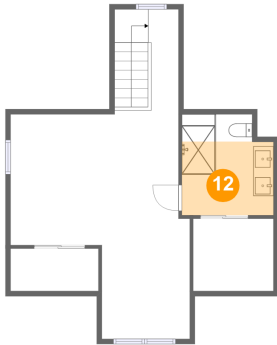
Max Dimensions: 17'8" x 32'6"
Calculated Area: 363 sq. ft
Included: Yes

Heated: Yes
Finished: Yes
Enclosed: Yes
Contiguous: Yes
Permitted: Yes
Wet space: No
Addition: No
Conversion: No

Home report

900 Eldridge Avenue, Oaklyn, Camden County, New Jersey,
United States, 08107

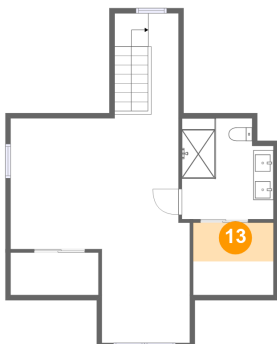
12 Floor 3 - Bath



Max Dimensions: 9'1" x 10'0"
Calculated Area: 66 sq. ft
Included: Yes

Heated: Yes
Finished: Yes
Enclosed: Yes
Contiguous: Yes
Permitted: Yes
Wet space: Yes
Addition: No
Conversion: No

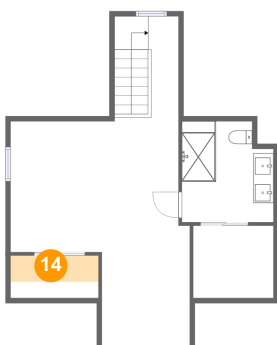
13 Floor 3 - W.I.C.



Max Dimensions: 7'11" x 7'2"
Calculated Area: 30 sq. ft
Included: Yes

Heated: Yes
Finished: Yes
Enclosed: Yes
Contiguous: Yes
Permitted: Yes
Wet space: No
Addition: No
Conversion: No

14 Floor 3 - W.I.C.



Max Dimensions: 8'8" x 4'2"
Calculated Area: 22 sq. ft
Included: Yes

Heated: Yes
Finished: Yes
Enclosed: Yes
Contiguous: Yes
Permitted: Yes
Wet space: No
Addition: No
Conversion: No