

Home report

4951 Warrior Drive, Cherokee Hills, Salem, Roanoke County,
Virginia, United States, 24153



Total Area: 2149 sq. ft

Below Ground: 0 sq. ft, Floor 2: 980 sq. ft, Floor 3: 1169 sq. ft

Excluded: Basement 908 sq. ft, Garage 592 sq. ft, Outdoor Porch 25 sq. ft, Outdoor Balcony 110 sq. ft

Property summary

 **3** Floors

 **4** Bedrooms

 **2** Bathrooms

Home report

**4951 Warrior Drive, Cherokee Hills, Salem, Roanoke County,
Virginia, United States, 24153**



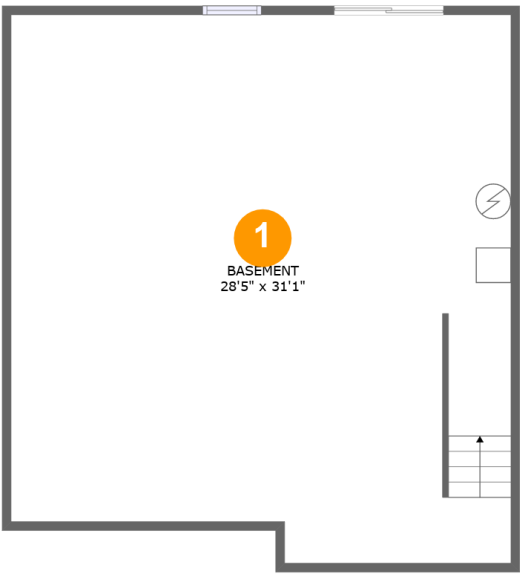
1
Half baths



1
Garages

Home report

4951 Warrior Drive, Cherokee Hills, Salem, Roanoke County,
Virginia, United States, 24153



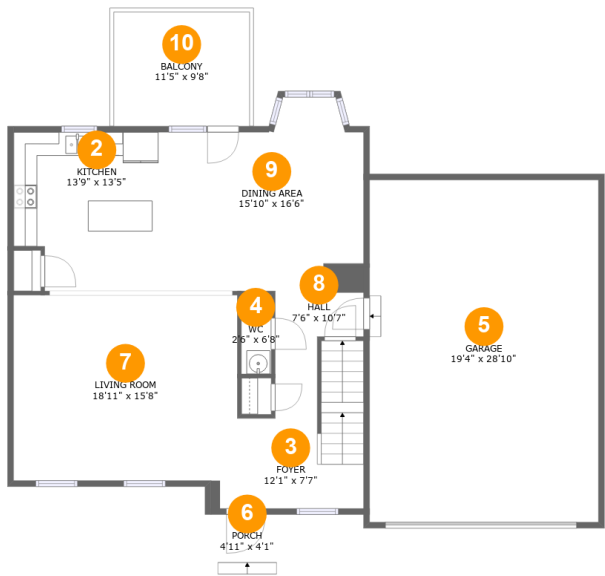
Room dimensions

Floor 1 Below ground Total:0sqft Excluded: 908sqft

#		Max Dimensions	sqft	Included
1	Basement	28'5" x 31'1"	847 sq. ft	No

Home report

4951 Warrior Drive, Cherokee Hills, Salem, Roanoke County,
Virginia, United States, 24153



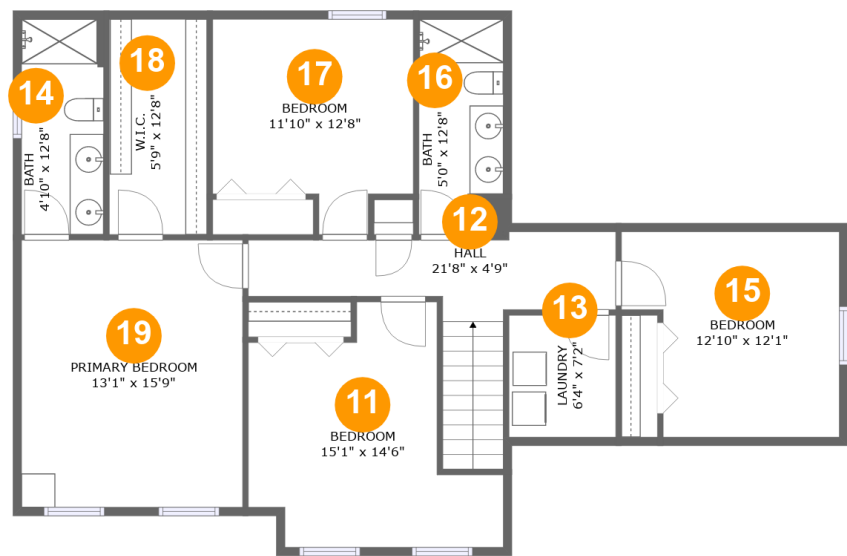
Room dimensions

Floor 2 Total:980sqft Excluded: 727sqft

#		Max Dimensions	sqft	Included
2	Kitchen	13'9" x 13'5"	174 sq. ft	Yes
3	Foyer	12'1" x 7'7"	109 sq. ft	Yes
4	WC	2'6" x 6'8"	17 sq. ft	Yes
5	Garage	19'4" x 28'10"	558 sq. ft	No
6	Porch	4'11" x 4'1"	25 sq. ft	No
7	Living Room	18'11" x 15'8"	296 sq. ft	Yes
8	Hall	7'6" x 10'7"	52 sq. ft	Yes
9	Dining Area	15'10" x 16'6"	221 sq. ft	Yes
10	Balcony	11'5" x 9'8"	110 sq. ft	No

Home report

4951 Warrior Drive, Cherokee Hills, Salem, Roanoke County,
Virginia, United States, 24153



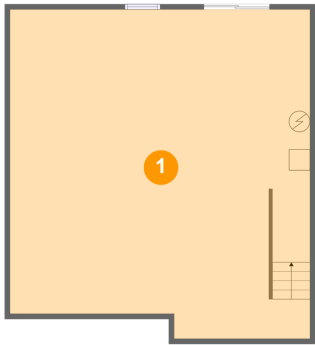
Room dimensions

Floor 3 Total:1169sqft Excluded: 0sqft

#		Max Dimensions	sqft	Included
11	Bedroom	15'1" x 14'6"	157 sq. ft	Yes
12	Hall	21'8" x 4'9"	117 sq. ft	Yes
13	Laundry	6'4" x 7'2"	45 sq. ft	Yes
14	Bath	4'10" x 12'8"	61 sq. ft	Yes
15	Bedroom	12'10" x 12'1"	137 sq. ft	Yes
16	Bath	5'0" x 12'8"	58 sq. ft	Yes
17	Bedroom	11'10" x 12'8"	129 sq. ft	Yes
18	W.I.C.	5'9" x 12'8"	73 sq. ft	Yes
19	Primary Bedroom	13'1" x 15'9"	205 sq. ft	Yes

4951 Warrior Drive, Cherokee Hills, Salem, Roanoke County,
Virginia, United States, 24153

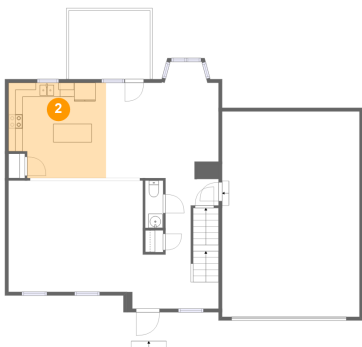
1 Floor 1 - Basement



Max Dimensions: 28'5" x 31'1"
Calculated Area: 847 sq. ft
Included: No

Heated: Yes
Finished: No
Enclosed: Yes
Contiguous: Yes
Permitted: Yes
Wet space: No
Addition: No
Conversion: No

2 Floor 2 - Kitchen

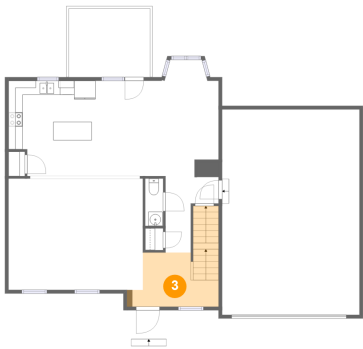


Max Dimensions: 13'9" x 13'5"
Calculated Area: 174 sq. ft
Included: Yes

Heated: Yes
Finished: Yes
Enclosed: Yes
Contiguous: Yes
Permitted: Yes
Wet space: No
Addition: No
Conversion: No

4951 Warrior Drive, Cherokee Hills, Salem, Roanoke County,
Virginia, United States, 24153

3 Floor 2 - Foyer



Max Dimensions: 12'1" x 7'7"
Calculated Area: 109 sq. ft
Included: Yes

Heated: Yes
Finished: Yes
Enclosed: Yes
Contiguous: Yes
Permitted: Yes
Wet space: No
Addition: No
Conversion: No

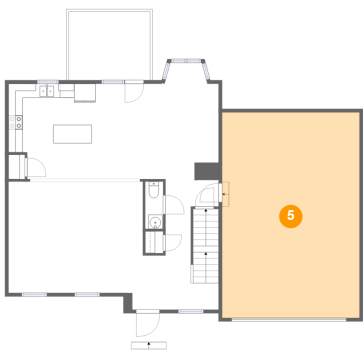
4 Floor 2 - WC



Max Dimensions: 2'6" x 6'8"
Calculated Area: 17 sq. ft
Included: Yes

Heated: Yes
Finished: Yes
Enclosed: Yes
Contiguous: Yes
Permitted: Yes
Wet space: Yes
Addition: No
Conversion: No

5 Floor 2 - Garage



Max Dimensions: 19'4" x 28'10"
Calculated Area: 558 sq. ft
Included: No

Heated: No
Finished: No
Enclosed: Yes
Contiguous: Yes
Permitted: Yes
Wet space: No
Addition: No
Conversion: No

4951 Warrior Drive, Cherokee Hills, Salem, Roanoke County,
Virginia, United States, 24153

6 Floor 2 - Porch



Max Dimensions: 4'11" x 4'1"
Calculated Area: 25 sq. ft
Included: No

Heated: No
Finished: Yes
Enclosed: No
Contiguous: Yes
Permitted: Yes
Wet space: No
Addition: No
Conversion: No

7 Floor 2 - Living Room



Max Dimensions: 18'11" x 15'8"
Calculated Area: 296 sq. ft
Included: Yes

Heated: Yes
Finished: Yes
Enclosed: Yes
Contiguous: Yes
Permitted: Yes
Wet space: No
Addition: No
Conversion: No

8 Floor 2 - Hall

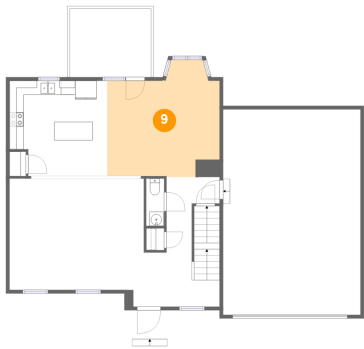


Max Dimensions: 7'6" x 10'7"
Calculated Area: 52 sq. ft
Included: Yes

Heated: Yes
Finished: Yes
Enclosed: Yes
Contiguous: Yes
Permitted: Yes
Wet space: No
Addition: No
Conversion: No

4951 Warrior Drive, Cherokee Hills, Salem, Roanoke County,
Virginia, United States, 24153

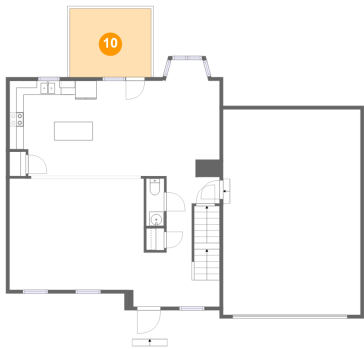
9 Floor 2 - Dining Area



Max Dimensions: 15'10" x 16'6"
Calculated Area: 221 sq. ft
Included: Yes

Heated: Yes
Finished: Yes
Enclosed: Yes
Contiguous: Yes
Permitted: Yes
Wet space: No
Addition: No
Conversion: No

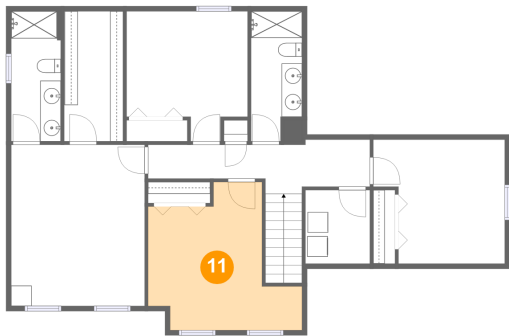
10 Floor 2 - Balcony



Max Dimensions: 11'5" x 9'8"
Calculated Area: 110 sq. ft
Included: No

Heated: No
Finished: Yes
Enclosed: No
Contiguous: Yes
Permitted: Yes
Wet space: No
Addition: No
Conversion: No

11 Floor 3 - Bedroom

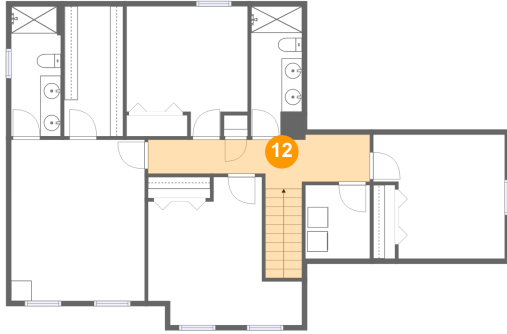


Max Dimensions: 15'1" x 14'6"
Calculated Area: 157 sq. ft
Included: Yes

Heated: Yes
Finished: Yes
Enclosed: Yes
Contiguous: Yes
Permitted: Yes
Wet space: No
Addition: No
Conversion: No

4951 Warrior Drive, Cherokee Hills, Salem, Roanoke County,
Virginia, United States, 24153

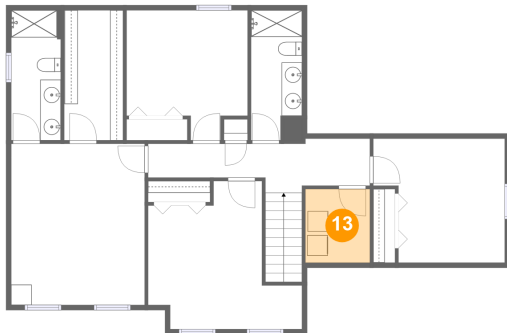
12 Floor 3 - Hall



Max Dimensions: 21'8" x 4'9"
Calculated Area: 117 sq. ft
Included: Yes

Heated: Yes
Finished: Yes
Enclosed: Yes
Contiguous: Yes
Permitted: Yes
Wet space: No
Addition: No
Conversion: No

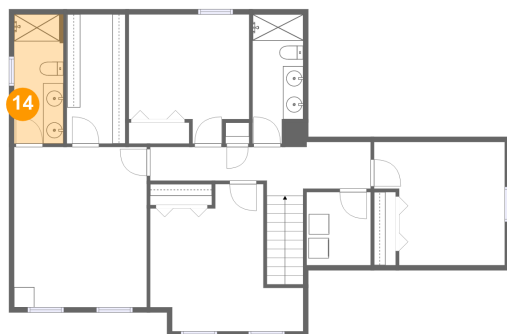
13 Floor 3 - Laundry



Max Dimensions: 6'4" x 7'2"
Calculated Area: 45 sq. ft
Included: Yes

Heated: Yes
Finished: Yes
Enclosed: Yes
Contiguous: Yes
Permitted: Yes
Wet space: No
Addition: No
Conversion: No

14 Floor 3 - Bath

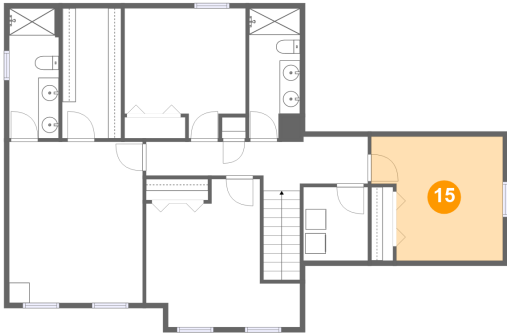


Max Dimensions: 4'10" x 12'8"
Calculated Area: 61 sq. ft
Included: Yes

Heated: Yes
Finished: Yes
Enclosed: Yes
Contiguous: Yes
Permitted: Yes
Wet space: Yes
Addition: No
Conversion: No

4951 Warrior Drive, Cherokee Hills, Salem, Roanoke County,
Virginia, United States, 24153

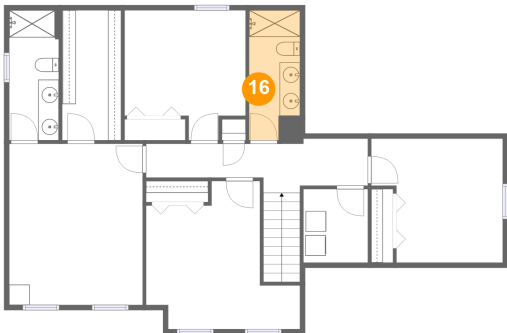
15 Floor 3 - Bedroom



Max Dimensions: 12'10" x 12'1"
Calculated Area: 137 sq. ft
Included: Yes

Heated: Yes
Finished: Yes
Enclosed: Yes
Contiguous: Yes
Permitted: Yes
Wet space: No
Addition: No
Conversion: No

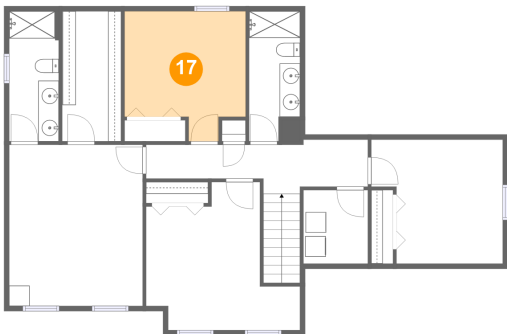
16 Floor 3 - Bath



Max Dimensions: 5'0" x 12'8"
Calculated Area: 58 sq. ft
Included: Yes

Heated: Yes
Finished: Yes
Enclosed: Yes
Contiguous: Yes
Permitted: Yes
Wet space: Yes
Addition: No
Conversion: No

17 Floor 3 - Bedroom

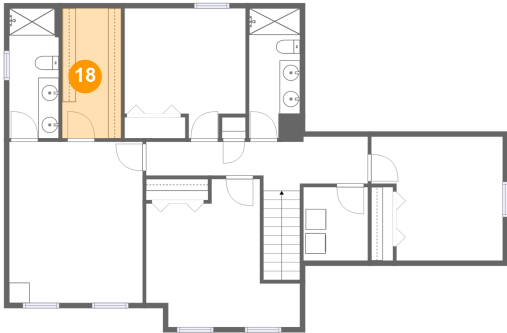


Max Dimensions: 11'10" x 12'8"
Calculated Area: 129 sq. ft
Included: Yes

Heated: Yes
Finished: Yes
Enclosed: Yes
Contiguous: Yes
Permitted: Yes
Wet space: No
Addition: No
Conversion: No

4951 Warrior Drive, Cherokee Hills, Salem, Roanoke County,
Virginia, United States, 24153

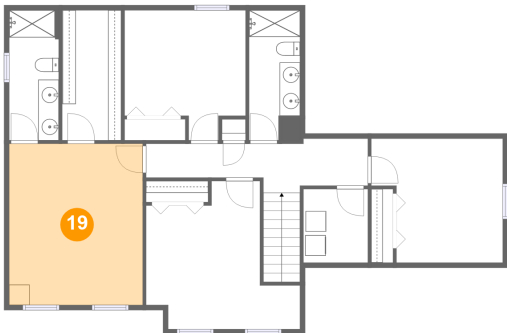
18 Floor 3 - W.I.C.



Max Dimensions: 5'9" x 12'8"
Calculated Area: 73 sq. ft
Included: Yes

Heated: Yes
Finished: Yes
Enclosed: Yes
Contiguous: Yes
Permitted: Yes
Wet space: No
Addition: No
Conversion: No

19 Floor 3 - Primary Bedroom



Max Dimensions: 13'1" x 15'9"
Calculated Area: 205 sq. ft
Included: Yes

Heated: Yes
Finished: Yes
Enclosed: Yes
Contiguous: Yes
Permitted: Yes
Wet space: No
Addition: No
Conversion: No