

Home report

18800 Southwest Longacre Street, Cooper Mountain - Aloha North, Aloha, Washington County, Oregon, United States, 97003



Total Area: 3489 sq. ft

Floor 1: 2436 sq. ft, Floor 2: 1053 sq. ft

Excluded: Garage 796 sq. ft, Fireplace 11 sq. ft, Open to below 383 sq. ft, Walls: 256 sq. ft

Property summary

2 Floors

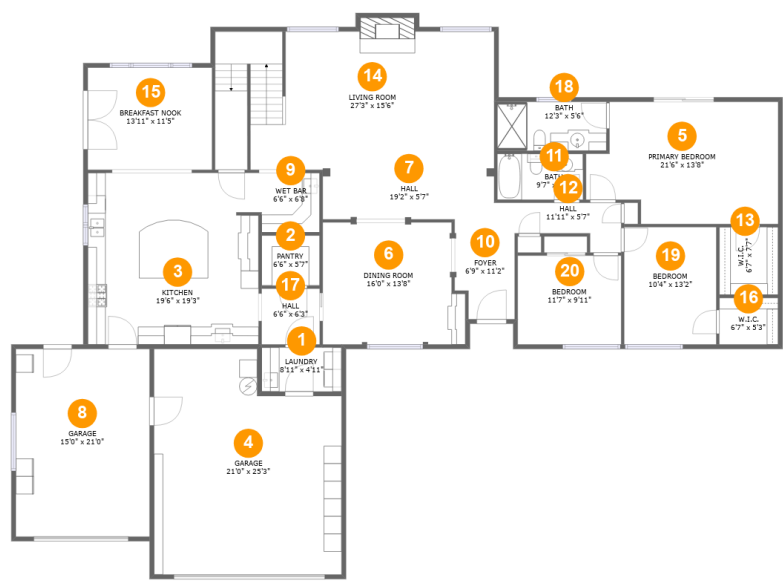
4 Bedrooms

3 Bathrooms

2 Garages

Home report

18800 Southwest Longacre Street, Cooper Mountain - Aloha
North, Aloha, Washington County, Oregon, United States, 97003



Room dimensions

Floor 1

Total:2436sqft Excluded: 807sqft

#		Max Dimensions	sqft	Included
1	Laundry	8'11" x 4'11"	44 sq. ft	Yes
2	Pantry	6'6" x 5'7"	37 sq. ft	Yes
3	Kitchen	19'6" x 19'3"	369 sq. ft	Yes
4	Garage	21'0" x 25'3"	481 sq. ft	No
5	Primary Bedroom	21'6" x 13'8"	263 sq. ft	Yes
6	Dining Room	16'0" x 13'8"	206 sq. ft	Yes
7	Hall	19'2" x 5'7"	111 sq. ft	Yes
8	Garage	15'0" x 21'0"	315 sq. ft	No
9	Wet Bar	6'6" x 6'8"	44 sq. ft	Yes
10	Foyer	6'9" x 11'2"	70 sq. ft	Yes
11	Bath	9'7" x 5'2"	50 sq. ft	Yes

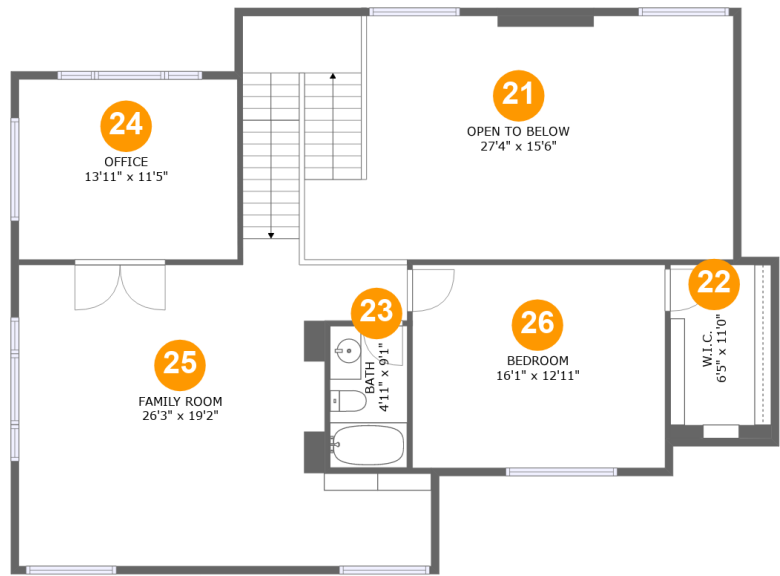
Home report

**18800 Southwest Longacre Street, Cooper Mountain - Aloha
North, Aloha, Washington County, Oregon, United States, 97003**

#		Max Dimensions	sqft	Included
12	Hall	11'11" x 5'7"	48 sq. ft	Yes
13	W.I.C.	6'7" x 7'7"	50 sq. ft	Yes
14	Living Room	27'3" x 15'6"	487 sq. ft	Yes
15	Breakfast Nook	13'11" x 11'5"	159 sq. ft	Yes
16	W.I.C.	6'7" x 5'3"	35 sq. ft	Yes
17	Hall	6'6" x 6'3"	41 sq. ft	Yes
18	Bath	12'3" x 5'6"	67 sq. ft	Yes
19	Bedroom	10'4" x 13'2"	136 sq. ft	Yes
20	Bedroom	11'7" x 9'11"	115 sq. ft	Yes

Home report

18800 Southwest Longacre Street, Cooper Mountain - Aloha North, Aloha, Washington County, Oregon, United States, 97003



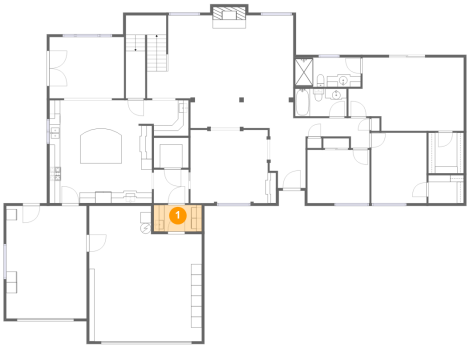
Room dimensions

Floor 2 Total:1053sqft Excluded: 383sqft

#		Max Dimensions	sqft	Included
21	Open To Below	27'4" x 15'6"	383 sq. ft	No
22	W.I.C.	6'5" x 11'0"	71 sq. ft	Yes
23	Bath	4'11" x 9'1"	45 sq. ft	Yes
24	Office	13'11" x 11'5"	160 sq. ft	Yes
25	Family Room	26'3" x 19'2"	539 sq. ft	Yes
26	Bedroom	16'1" x 12'11"	208 sq. ft	Yes

18800 Southwest Longacre Street, Cooper Mountain - Aloha
North, Aloha, Washington County, Oregon, United States, 97003

1 Floor 1 - Laundry



Max Dimensions: 8'11" x 4'11"
Calculated Area: 44 sq. ft
Included: Yes

Heated: Yes
Finished: Yes
Enclosed: Yes
Contiguous: Yes
Permitted: Yes
Wet space: No
Addition: No
Conversion: No

2 Floor 1 - Pantry

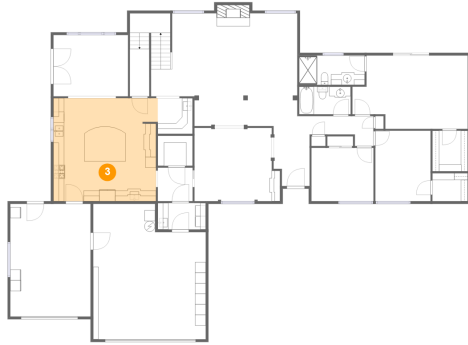


Max Dimensions: 6'6" x 5'7"
Calculated Area: 37 sq. ft
Included: Yes

Heated: Yes
Finished: Yes
Enclosed: Yes
Contiguous: Yes
Permitted: Yes
Wet space: No
Addition: No
Conversion: No

**18800 Southwest Longacre Street, Cooper Mountain - Aloha
North, Aloha, Washington County, Oregon, United States, 97003**

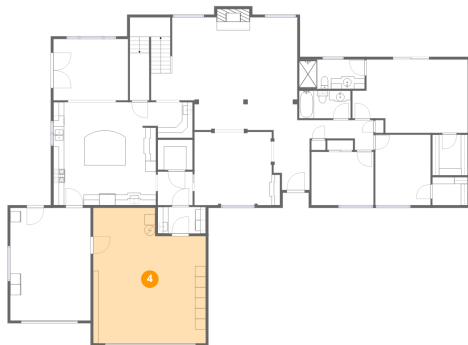
3 Floor 1 - Kitchen



Max Dimensions: 19'6" x 19'3"
Calculated Area: 369 sq. ft
Included: Yes

Heated: Yes
Finished: Yes
Enclosed: Yes
Contiguous: Yes
Permitted: Yes
Wet space: No
Addition: No
Conversion: No

4 Floor 1 - Garage



Max Dimensions: 21'0" x 25'3"
Calculated Area: 481 sq. ft
Included: No

Heated: No
Finished: No
Enclosed: Yes
Contiguous: Yes
Permitted: Yes
Wet space: No
Addition: No
Conversion: No

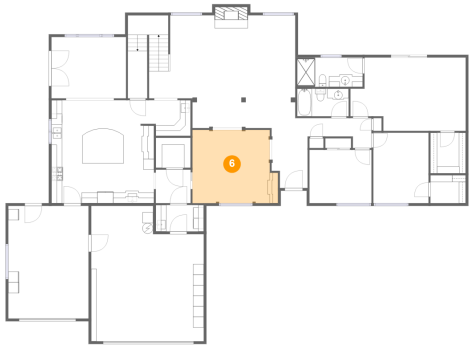
5 Floor 1 - Primary Bedroom



Max Dimensions: 21'6" x 13'8"
Calculated Area: 263 sq. ft
Included: Yes

Heated: Yes
Finished: Yes
Enclosed: Yes
Contiguous: Yes
Permitted: Yes
Wet space: No
Addition: No
Conversion: No

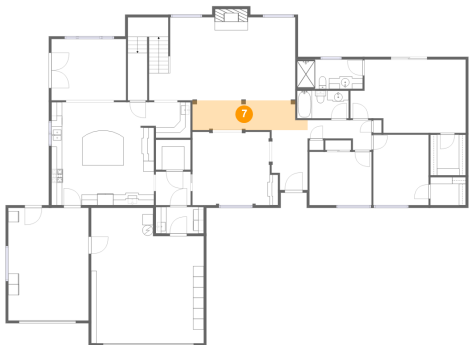
6 Floor 1 - Dining Room



Max Dimensions: 16'0" x 13'8"
Calculated Area: 206 sq. ft
Included: Yes

Heated: Yes
Finished: Yes
Enclosed: Yes
Contiguous: Yes
Permitted: Yes
Wet space: No
Addition: No
Conversion: No

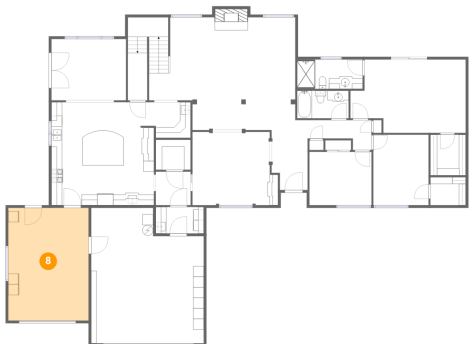
7 Floor 1 - Hall



Max Dimensions: 19'2" x 5'7"
Calculated Area: 111 sq. ft
Included: Yes

Heated: Yes
Finished: Yes
Enclosed: Yes
Contiguous: Yes
Permitted: Yes
Wet space: No
Addition: No
Conversion: No

8 Floor 1 - Garage



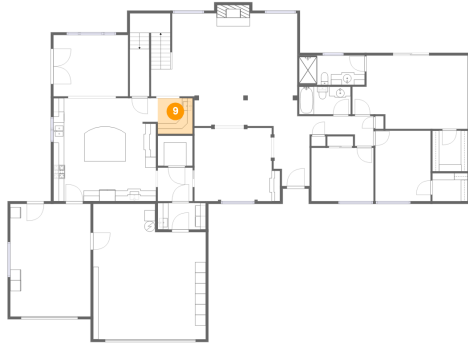
Max Dimensions: 15'0" x 21'0"
Calculated Area: 315 sq. ft
Included: No

Heated: No
Finished: No
Enclosed: Yes
Contiguous: Yes
Permitted: Yes
Wet space: No
Addition: No
Conversion: No

Home report

18800 Southwest Longacre Street, Cooper Mountain - Aloha
North, Aloha, Washington County, Oregon, United States, 97003

9 Floor 1 - Wet Bar



Max Dimensions: 6'6" x 6'8"
Calculated Area: 44 sq. ft
Included: Yes

Heated: Yes
Finished: Yes
Enclosed: Yes
Contiguous: Yes
Permitted: Yes
Wet space: No
Addition: No
Conversion: No

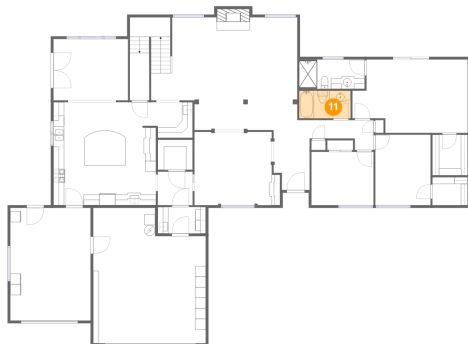
10 Floor 1 - Foyer



Max Dimensions: 6'9" x 11'2"
Calculated Area: 70 sq. ft
Included: Yes

Heated: Yes
Finished: Yes
Enclosed: Yes
Contiguous: Yes
Permitted: Yes
Wet space: No
Addition: No
Conversion: No

11 Floor 1 - Bath



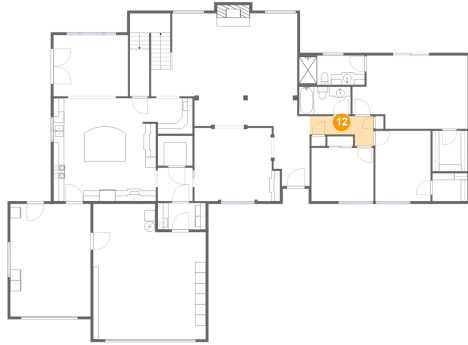
Max Dimensions: 9'7" x 5'2"
Calculated Area: 50 sq. ft
Included: Yes

Heated: Yes
Finished: Yes
Enclosed: Yes
Contiguous: Yes
Permitted: Yes
Wet space: Yes
Addition: No
Conversion: No

Home report

18800 Southwest Longacre Street, Cooper Mountain - Aloha
North, Aloha, Washington County, Oregon, United States, 97003

12 Floor 1 - Hall



Max Dimensions: 11'11" x 5'7"
Calculated Area: 48 sq. ft
Included: Yes

Heated: Yes
Finished: Yes
Enclosed: Yes
Contiguous: Yes
Permitted: Yes
Wet space: No
Addition: No
Conversion: No

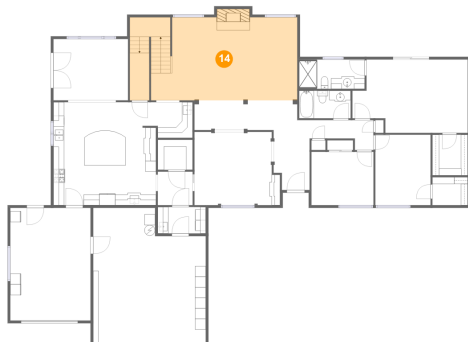
13 Floor 1 - W.I.C.



Max Dimensions: 6'7" x 7'7"
Calculated Area: 50 sq. ft
Included: Yes

Heated: Yes
Finished: Yes
Enclosed: Yes
Contiguous: Yes
Permitted: Yes
Wet space: No
Addition: No
Conversion: No

14 Floor 1 - Living Room



Max Dimensions: 27'3" x 15'6"
Calculated Area: 487 sq. ft
Included: Yes

Heated: Yes
Finished: Yes
Enclosed: Yes
Contiguous: Yes
Permitted: Yes
Wet space: No
Addition: No
Conversion: No

Home report

18800 Southwest Longacre Street, Cooper Mountain - Aloha
North, Aloha, Washington County, Oregon, United States, 97003

15 Floor 1 - Breakfast Nook



Max Dimensions: 13'11" x 11'5"
Calculated Area: 159 sq. ft
Included: Yes

Heated: Yes
Finished: Yes
Enclosed: Yes
Contiguous: Yes
Permitted: Yes
Wet space: No
Addition: No
Conversion: No

16 Floor 1 - W.I.C.



Max Dimensions: 6'7" x 5'3"
Calculated Area: 35 sq. ft
Included: Yes

Heated: Yes
Finished: Yes
Enclosed: Yes
Contiguous: Yes
Permitted: Yes
Wet space: No
Addition: No
Conversion: No

17 Floor 1 - Hall



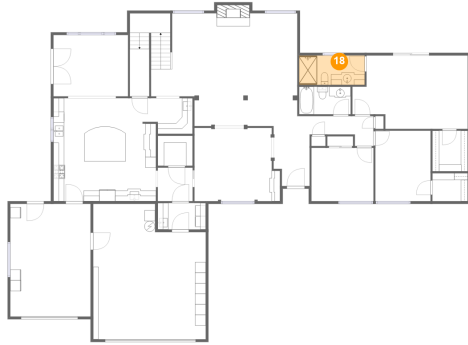
Max Dimensions: 6'6" x 6'3"
Calculated Area: 41 sq. ft
Included: Yes

Heated: Yes
Finished: Yes
Enclosed: Yes
Contiguous: Yes
Permitted: Yes
Wet space: No
Addition: No
Conversion: No

Home report

18800 Southwest Longacre Street, Cooper Mountain - Aloha
North, Aloha, Washington County, Oregon, United States, 97003

18 Floor 1 - Bath



Max Dimensions: 12'3" x 5'6"
Calculated Area: 67 sq. ft
Included: Yes

Heated: Yes
Finished: Yes
Enclosed: Yes
Contiguous: Yes
Permitted: Yes
Wet space: Yes
Addition: No
Conversion: No

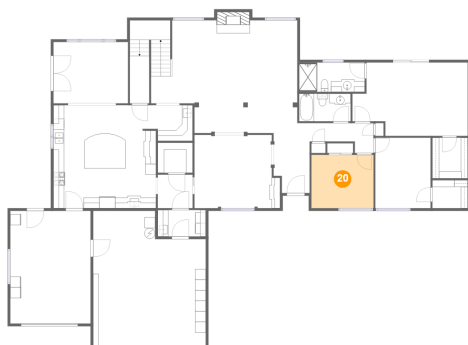
19 Floor 1 - Bedroom



Max Dimensions: 10'4" x 13'2"
Calculated Area: 136 sq. ft
Included: Yes

Heated: Yes
Finished: Yes
Enclosed: Yes
Contiguous: Yes
Permitted: Yes
Wet space: No
Addition: No
Conversion: No

20 Floor 1 - Bedroom



Max Dimensions: 11'7" x 9'11"
Calculated Area: 115 sq. ft
Included: Yes

Heated: Yes
Finished: Yes
Enclosed: Yes
Contiguous: Yes
Permitted: Yes
Wet space: No
Addition: No
Conversion: No

18800 Southwest Longacre Street, Cooper Mountain - Aloha
North, Aloha, Washington County, Oregon, United States, 97003

21 Floor 2 - Open To Below



Max Dimensions: 27'4" x 15'6"
Calculated Area: 383 sq. ft
Included: No

Heated: No
Finished: No
Enclosed: No
Contiguous: Yes
Permitted: No
Wet space: No
Addition: No
Conversion: No

22 Floor 2 - W.I.C.



Max Dimensions: 6'5" x 11'0"
Calculated Area: 71 sq. ft
Included: Yes

Heated: Yes
Finished: Yes
Enclosed: Yes
Contiguous: Yes
Permitted: Yes
Wet space: No
Addition: No
Conversion: No

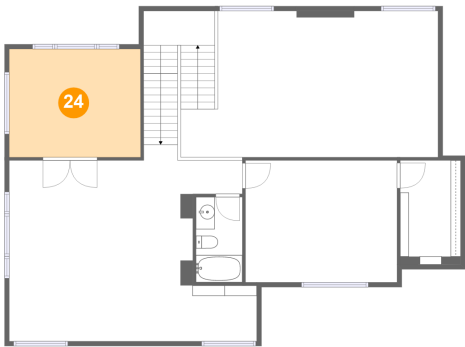
23 Floor 2 - Bath



Max Dimensions: 4'11" x 9'1"
Calculated Area: 45 sq. ft
Included: Yes

Heated: Yes
Finished: Yes
Enclosed: Yes
Contiguous: Yes
Permitted: Yes
Wet space: Yes
Addition: No
Conversion: No

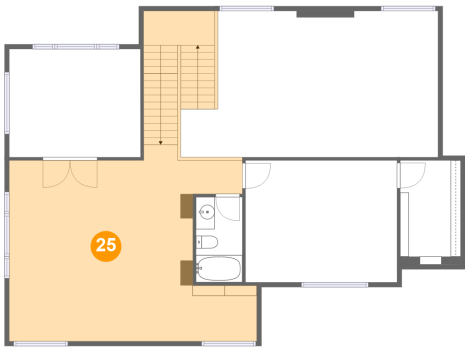
24 Floor 2 - Office



Max Dimensions: 13'11" x 11'5"
Calculated Area: 160 sq. ft
Included: Yes

Heated: Yes
Finished: Yes
Enclosed: Yes
Contiguous: Yes
Permitted: Yes
Wet space: No
Addition: No
Conversion: No

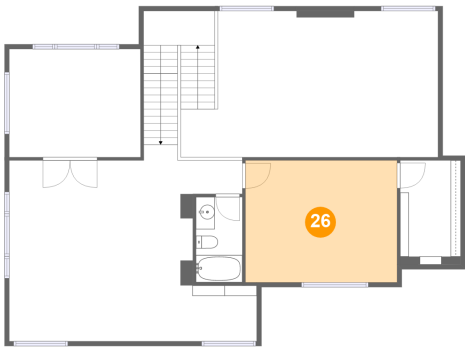
25 Floor 2 - Family Room



Max Dimensions: 26'3" x 19'2"
Calculated Area: 539 sq. ft
Included: Yes

Heated: Yes
Finished: Yes
Enclosed: Yes
Contiguous: Yes
Permitted: Yes
Wet space: No
Addition: No
Conversion: No

26 Floor 2 - Bedroom



Max Dimensions: 16'1" x 12'11"
Calculated Area: 208 sq. ft
Included: Yes

Heated: Yes
Finished: Yes
Enclosed: Yes
Contiguous: Yes
Permitted: Yes
Wet space: No
Addition: No
Conversion: No