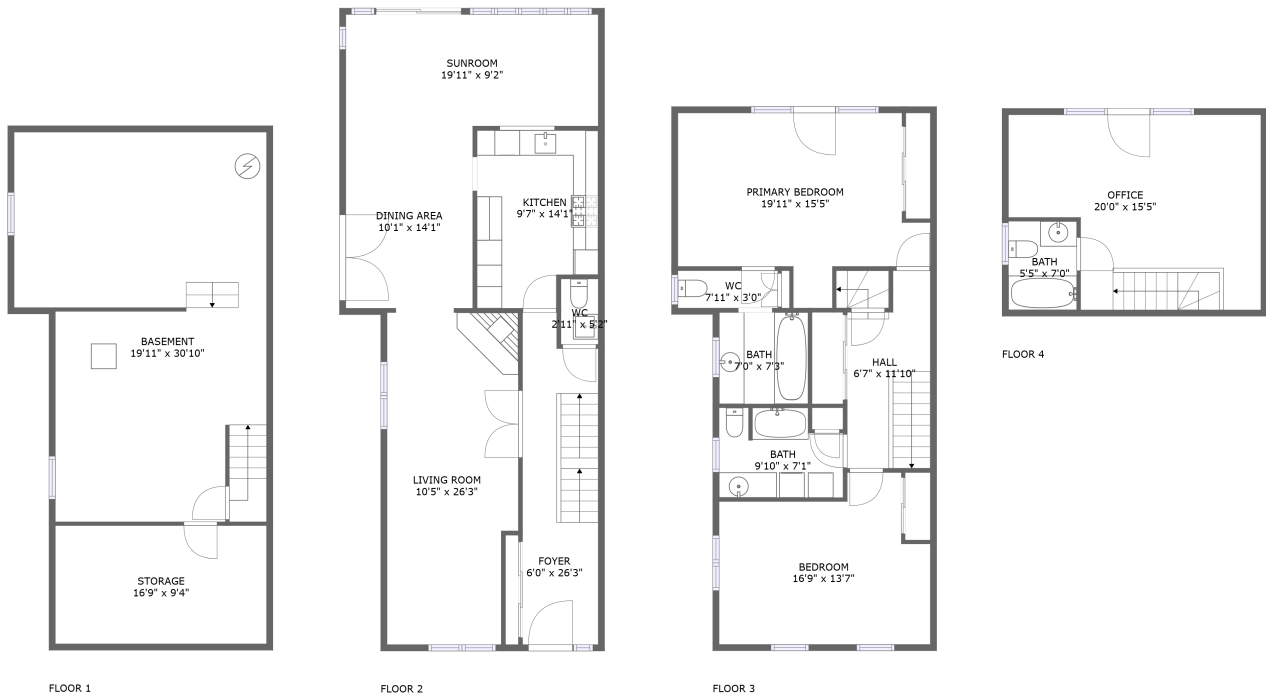


46 Waverley Street, Centretown, Ottawa East, Ottawa, Ontario, Canada, K2P 0T9



Property summary

 **0** Garages

 **2** Bedrooms

 **3** Bathrooms

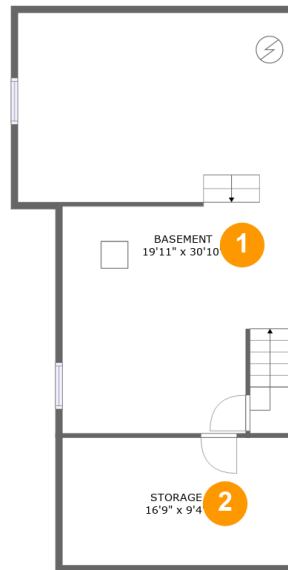
 **1** Half baths

 **4** Floors

 **1,956** Gross living area sqft

 **2,927** Total sqft

**46 Waverley Street, Centretown, Ottawa East, Ottawa,
Ontario, Canada, K2P 0T9**



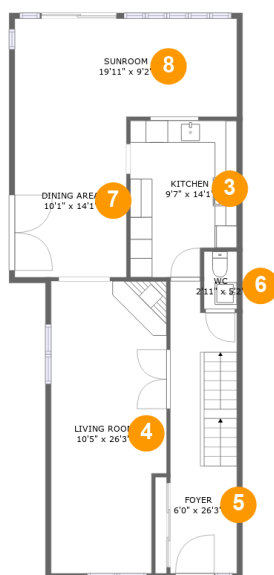
Room dimensions

Floor 1

Total sqft: 784 Living area: 0

#		Dimensions	sqft	Counted as living area
1	Basement	19'11" x 30'10"	556 sq. ft	No
2	Storage	16'9" x 9'4"	157 sq. ft	No

**46 Waverley Street, Centretown, Ottawa East, Ottawa,
Ontario, Canada, K2P 0T9**



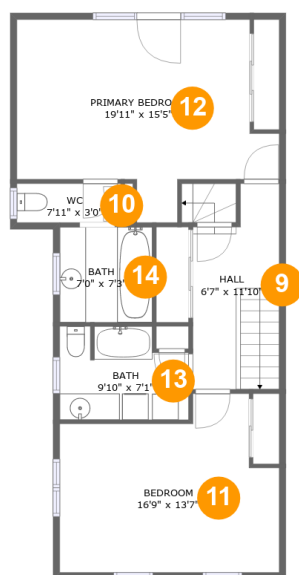
Room dimensions

Floor 2

Total sqft: 981 Living area: 981

#		Dimensions	sqft	Counted as living area
3	Kitchen	9'7" x 14'1"	126 sq. ft	Yes
4	Living Room	10'5" x 26'3"	261 sq. ft	Yes
5	Foyer	6'0" x 26'3"	148 sq. ft	Yes
6	WC	2'11" x 5'2"	15 sq. ft	Yes
7	Dining Area	10'1" x 14'1"	141 sq. ft	Yes
8	Sunroom	19'11" x 9'2"	182 sq. ft	Yes

**46 Waverley Street, Centretown, Ottawa East, Ottawa,
Ontario, Canada, K2P 0T9**



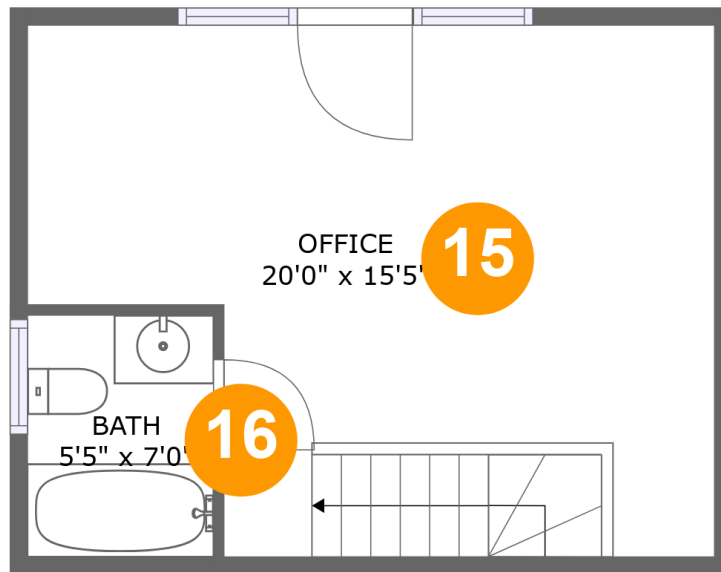
Room dimensions

Floor 3

Total sqft: 817 Living area: 817

#		Dimensions	sqft	Counted as living area
9	Hall	6'7" x 11'10"	91 sq. ft	Yes
10	WC	7'11" x 3'0"	23 sq. ft	Yes
11	Bedroom	16'9" x 13'7"	191 sq. ft	Yes
12	Primary Bedroom	19'11" x 15'5"	234 sq. ft	Yes
13	Bath	9'10" x 7'1"	64 sq. ft	Yes
14	Bath	7'0" x 7'3"	51 sq. ft	Yes

**46 Waverley Street, Centretown, Ottawa East, Ottawa,
Ontario, Canada, K2P 0T9**



Room dimensions

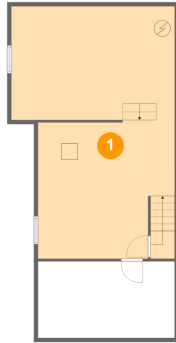
Floor 4

Total sqft: 345 Living area: 158

#		Dimensions	sqft	Counted as living area
15	Office	20'0" x 15'5"	143 sq. ft	Yes
16	Bath	5'5" x 7'0"	38 sq. ft	No

**46 Waverley Street, Centretown, Ottawa East, Ottawa,
Ontario, Canada, K2P 0T9**

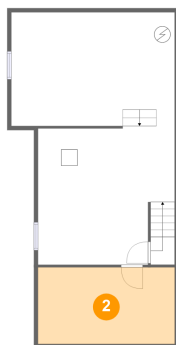
1 Floor 1 - Basement



Dimensions: 19'11" x 30'10"
Area: 556 sq. ft
Counted as living area: No

Heated: No
Finished: No
Enclosed: Yes
Contiguous: Yes
Permitted: Yes
Wet space: No
Addition: No
Conversion: No

2 Floor 1 - Storage



Dimensions: 16'9" x 9'4"
Area: 157 sq. ft
Counted as living area: No

Heated: No
Finished: No
Enclosed: No
Contiguous: Yes
Permitted: Yes
Wet space: No
Addition: No
Conversion: No

46 Waverley Street, Centretown, Ottawa East, Ottawa,
Ontario, Canada, K2P 0T9

3 Floor 2 - Kitchen



Dimensions: 9'7" x 14'1"
Area: 126 sq. ft
Counted as living area: Yes

Heated: Yes
Finished: Yes
Enclosed: Yes
Contiguous: Yes
Permitted: Yes
Wet space: No
Addition: No
Conversion: No

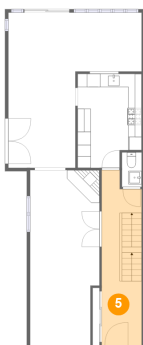
4 Floor 2 - Living Room



Dimensions: 10'5" x 26'3"
Area: 261 sq. ft
Counted as living area: Yes

Heated: Yes
Finished: Yes
Enclosed: Yes
Contiguous: Yes
Permitted: Yes
Wet space: No
Addition: No
Conversion: No

5 Floor 2 - Foyer



Dimensions: 6'0" x 26'3"
Area: 148 sq. ft
Counted as living area: Yes

Heated: Yes
Finished: Yes
Enclosed: Yes
Contiguous: Yes
Permitted: Yes
Wet space: No
Addition: No
Conversion: No

46 Waverley Street, Centretown, Ottawa East, Ottawa,
Ontario, Canada, K2P 0T9

6 Floor 2 - WC



Dimensions: 2'11" x 5'2"
Area: 15 sq. ft
Counted as living area: Yes

Heated: Yes
Finished: Yes
Enclosed: Yes
Contiguous: Yes
Permitted: Yes
Wet space: Yes
Addition: No
Conversion: No

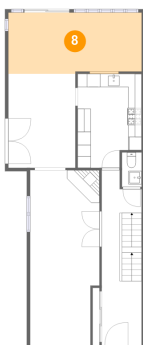
7 Floor 2 - Dining Area



Dimensions: 10'1" x 14'1"
Area: 141 sq. ft
Counted as living area: Yes

Heated: Yes
Finished: Yes
Enclosed: Yes
Contiguous: Yes
Permitted: Yes
Wet space: No
Addition: No
Conversion: No

8 Floor 2 - Sunroom



Dimensions: 19'11" x 9'2"
Area: 182 sq. ft
Counted as living area: Yes

Heated: Yes
Finished: Yes
Enclosed: Yes
Contiguous: Yes
Permitted: Yes
Wet space: No
Addition: No
Conversion: No

46 Waverley Street, Centretown, Ottawa East, Ottawa,
Ontario, Canada, K2P 0T9

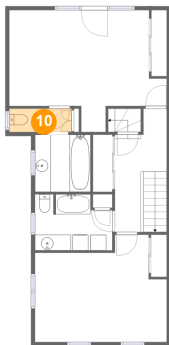
9 Floor 3 - Hall



Dimensions: 6'7" x 11'10"
Area: 91 sq. ft
Counted as living area: Yes

Heated: Yes
Finished: Yes
Enclosed: Yes
Contiguous: Yes
Permitted: Yes
Wet space: No
Addition: No
Conversion: No

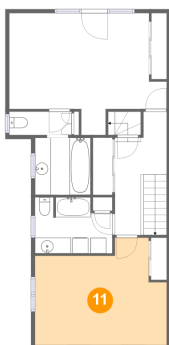
10 Floor 3 - WC



Dimensions: 7'11" x 3'0"
Area: 23 sq. ft
Counted as living area: Yes

Heated: Yes
Finished: Yes
Enclosed: Yes
Contiguous: Yes
Permitted: Yes
Wet space: Yes
Addition: No
Conversion: No

11 Floor 3 - Bedroom

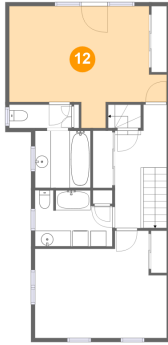


Dimensions: 16'9" x 13'7"
Area: 191 sq. ft
Counted as living area: Yes

Heated: Yes
Finished: Yes
Enclosed: Yes
Contiguous: Yes
Permitted: Yes
Wet space: No
Addition: No
Conversion: No

46 Waverley Street, Centretown, Ottawa East, Ottawa,
Ontario, Canada, K2P 0T9

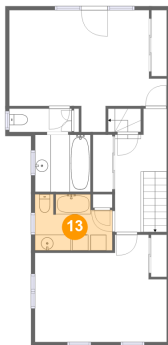
12 Floor 3 - Primary Bedroom



Dimensions: 19'11" x 15'5"
Area: 234 sq. ft
Counted as living area: Yes

Heated: Yes
Finished: Yes
Enclosed: Yes
Contiguous: Yes
Permitted: Yes
Wet space: No
Addition: No
Conversion: No

13 Floor 3 - Bath



Dimensions: 9'10" x 7'1"
Area: 64 sq. ft
Counted as living area: Yes

Heated: Yes
Finished: Yes
Enclosed: Yes
Contiguous: Yes
Permitted: Yes
Wet space: Yes
Addition: No
Conversion: No

14 Floor 3 - Bath

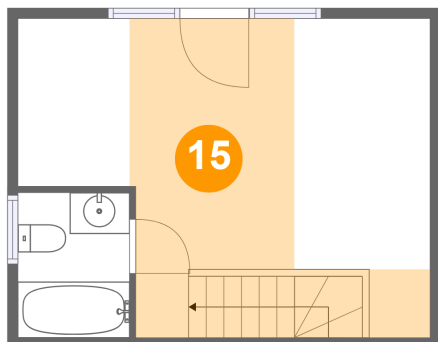


Dimensions: 7'0" x 7'3"
Area: 51 sq. ft
Counted as living area: Yes

Heated: Yes
Finished: Yes
Enclosed: Yes
Contiguous: Yes
Permitted: Yes
Wet space: Yes
Addition: No
Conversion: No

**46 Waverley Street, Centretown, Ottawa East, Ottawa,
Ontario, Canada, K2P 0T9**

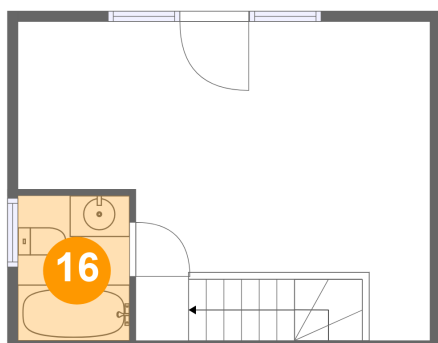
15 Floor 4 - Office



Dimensions: 20'0" x 15'5"
Area: 143 sq. ft
Counted as living area: Yes

Heated: Yes
Finished: Yes
Enclosed: Yes
Contiguous: Yes
Permitted: Yes
Wet space: No
Addition: No
Conversion: No

16 Floor 4 - Bath



Dimensions: 5'5" x 7'0"
Area: 38 sq. ft
Counted as living area: No

Heated: Yes
Finished: Yes
Enclosed: Yes
Contiguous: Yes
Permitted: Yes
Wet space: Yes
Addition: No
Conversion: No