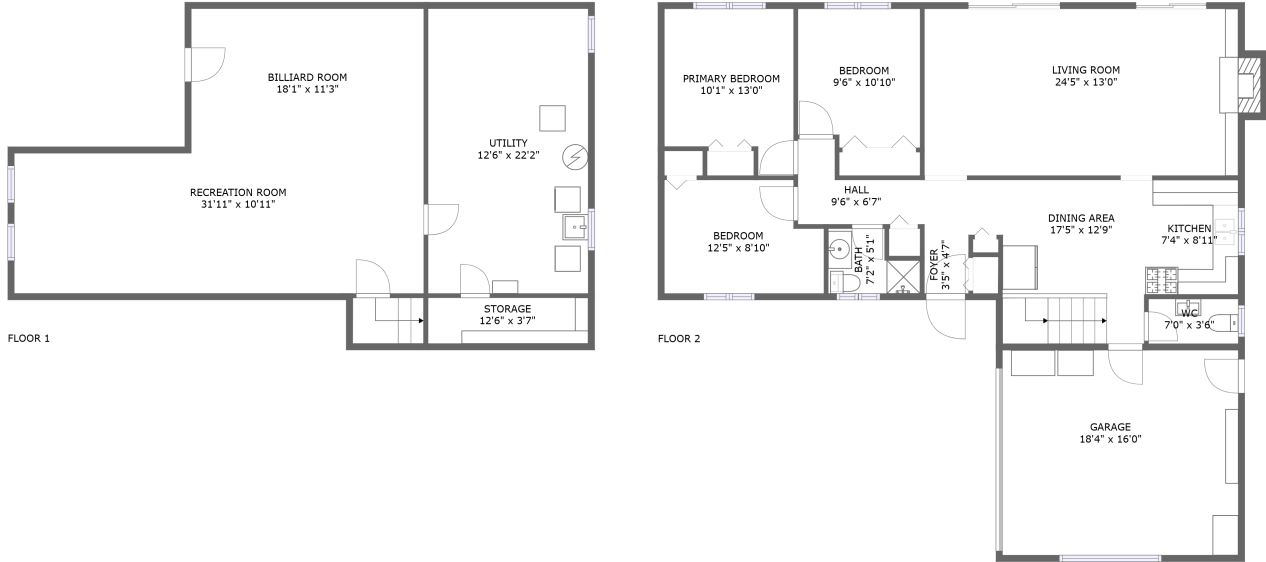


# 28024 Malvina Drive, Warren, Macomb County, Michigan, United States, 48088



## Property Summary

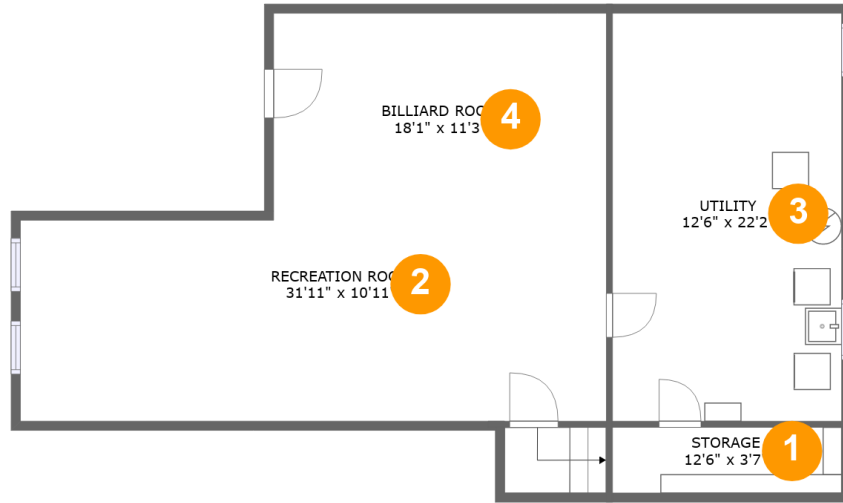
 **1** garages     **3** bedrooms     **1** bathrooms     **1** half baths

 **2** floors

 **1,015** Gross Living Area sqft

 **2,441** total sqft

**28024 Malvina Drive, Warren, Macomb County, Michigan, United States, 48088**



**Room Dimensions**

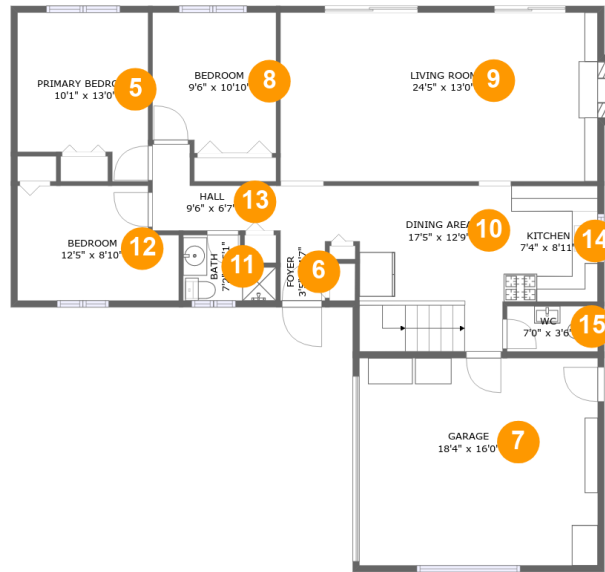
Floor 1

Total sqft: 979

Living area: 28

#	Room name	Dimensions	Area (sqft)	Counted as Living Area
1	Storage	12'6" x 3'7"	44 sq. ft	No
2	Recreation Room	31'11" x 10'11"	348 sq. ft	No
3	Utility	12'6" x 22'2"	277 sq. ft	No
4	Billiard Room	18'1" x 11'3"	204 sq. ft	No

**28024 Malvina Drive, Warren, Macomb County, Michigan, United States, 48088**



**Room Dimensions**

**Floor 2**

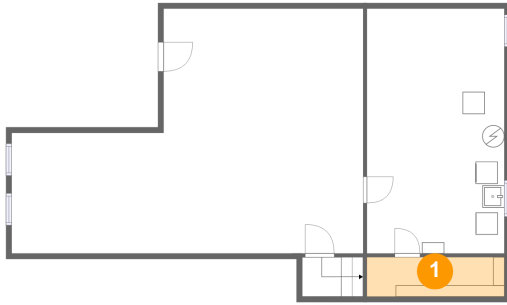
**Total sqft: 1462**

**Living area: 987**

#	Room name	Dimensions	Area (sqft)	Counted as Living Area
5	Primary Bedroom	10'1" x 13'0"	114 sq. ft	Yes
6	Foyer	3'5" x 4'7"	16 sq. ft	Yes
7	Garage	18'4" x 16'0"	293 sq. ft	No
8	Bedroom	9'6" x 10'10"	100 sq. ft	No
9	Living Room	24'5" x 13'0"	325 sq. ft	Yes
10	Dining Area	17'5" x 12'9"	168 sq. ft	Yes
11	Bath	7'2" x 5'1"	29 sq. ft	Yes
12	Bedroom	12'5" x 8'10"	101 sq. ft	Yes
13	Hall	9'6" x 6'7"	42 sq. ft	Yes
14	Kitchen	7'4" x 8'11"	65 sq. ft	Yes
15	Wc	7'0" x 3'6"	24 sq. ft	Yes

# 28024 Malvina Drive, Warren, Macomb County, Michigan, United States, 48088

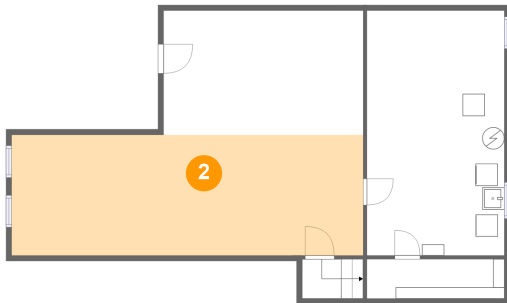
## 1 Floor 1 - Storage



Dimensions: 12'6" x 3'7"  
Area: 44 sq. ft  
Counted as Living Area: No

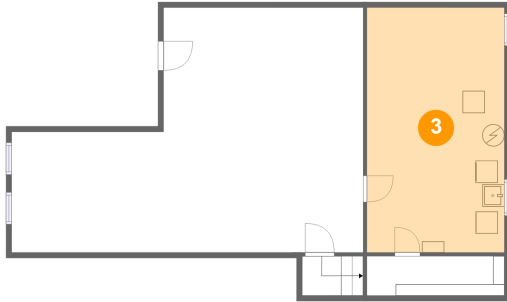
Heated: No  
Finished: No  
Enclosed: No  
Contiguous: Yes  
Permitted: Yes  
Wet Space: No  
Addition: No  
Conversion: No

## 2 Floor 1 - Recreation Room



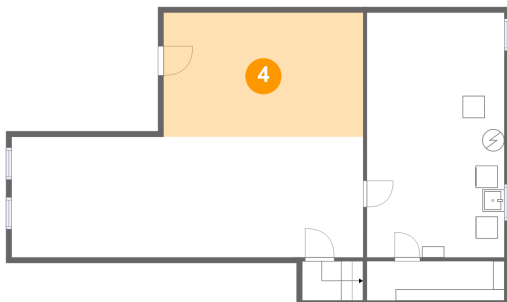
Dimensions: 31'11" x 10'11"  
Area: 348 sq. ft  
Counted as Living Area: No

Heated: Yes  
Finished: Yes  
Enclosed: Yes  
Contiguous: Yes  
Permitted: Yes  
Wet Space: No  
Addition: No  
Conversion: No

**28024 Malvina Drive, Warren, Macomb County,  
Michigan, United States, 48088****3 Floor 1 - Utility**

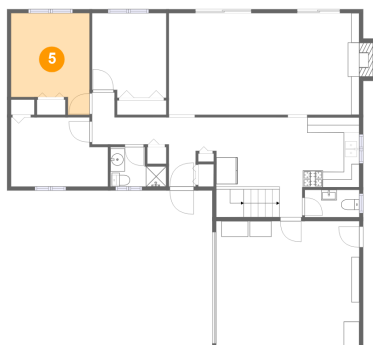
Dimensions: 12'6" x 22'2"  
Area: 277 sq. ft  
Counted as Living Area: No

Heated: Yes  
Finished: No  
Enclosed: Yes  
Contiguous: Yes  
Permitted: Yes  
Wet Space: No  
Addition: No  
Conversion: No

**4 Floor 1 - Billiard Room**

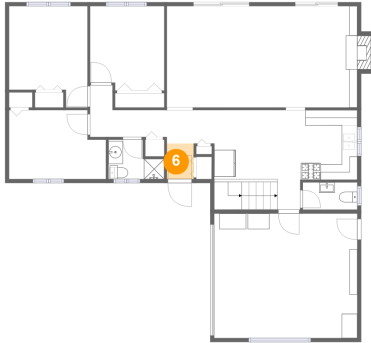
Dimensions: 18'1" x 11'3"  
Area: 204 sq. ft  
Counted as Living Area: No

Heated: Yes  
Finished: Yes  
Enclosed: Yes  
Contiguous: Yes  
Permitted: Yes  
Wet Space: No  
Addition: No  
Conversion: No

**5 Floor 2 - Primary Bedroom**

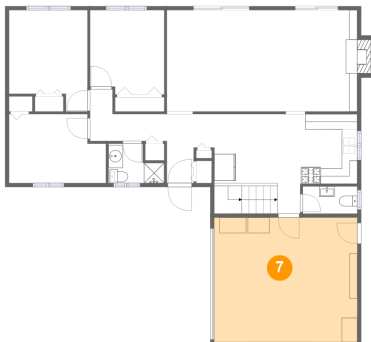
Dimensions: 10'1" x 13'0"  
Area: 114 sq. ft  
Counted as Living Area:  
Yes

Heated: Yes  
Finished: Yes  
Enclosed: Yes  
Contiguous:  
Yes  
Permitted: Yes  
Wet Space: No  
Addition: No  
Conversion: No

**28024 Malvina Drive, Warren, Macomb County,  
Michigan, United States, 48088****6 Floor 2 - Foyer**

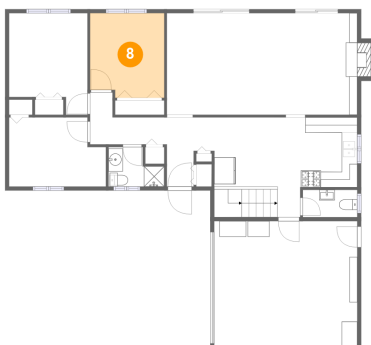
Dimensions: 3'5" x 4'7"  
Area: 16 sq. ft  
Counted as Living Area:  
Yes

Heated: Yes  
Finished: Yes  
Enclosed: Yes  
Contiguous:  
Yes  
Permitted: Yes  
Wet Space: No  
Addition: No  
Conversion: No

**7 Floor 2 - Garage**

Dimensions: 18'4" x 16'0"  
Area: 293 sq. ft  
Counted as Living Area: No

Heated: No  
Finished: No  
Enclosed: Yes  
Contiguous: Yes  
Permitted: Yes  
Wet Space: No  
Addition: No  
Conversion: No

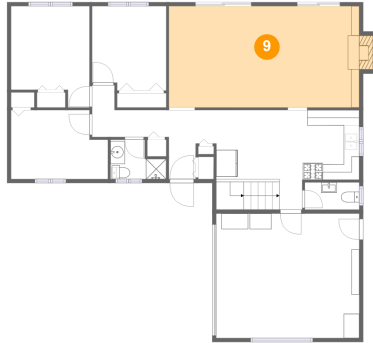
**8 Floor 2 - Bedroom**

Dimensions: 9'6" x 10'10"  
Area: 100 sq. ft  
Counted as Living Area: No

Heated: Yes  
Finished: Yes  
Enclosed: Yes  
Contiguous: Yes  
Permitted: Yes  
Wet Space: No  
Addition: No  
Conversion: No

# 28024 Malvina Drive, Warren, Macomb County, Michigan, United States, 48088

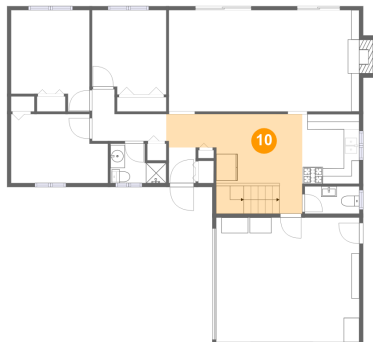
## 9 Floor 2 - Living Room



Dimensions: 24'5" x 13'0"  
Area: 325 sq. ft  
Counted as Living Area:  
Yes

Heated: Yes  
Finished: Yes  
Enclosed: Yes  
Contiguous:  
Yes  
Permitted: Yes  
Wet Space: No  
Addition: No  
Conversion: No

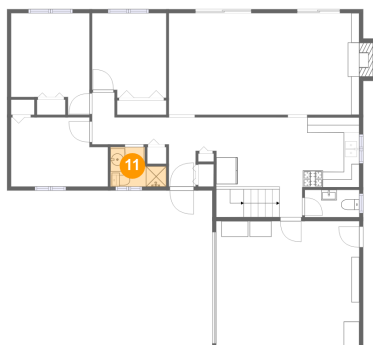
## 10 Floor 2 - Dining Area



Dimensions: 17'5" x 12'9"  
Area: 168 sq. ft  
Counted as Living Area:  
Yes

Heated: Yes  
Finished: Yes  
Enclosed: Yes  
Contiguous:  
Yes  
Permitted: Yes  
Wet Space: No  
Addition: No  
Conversion: No

## 11 Floor 2 - Bath

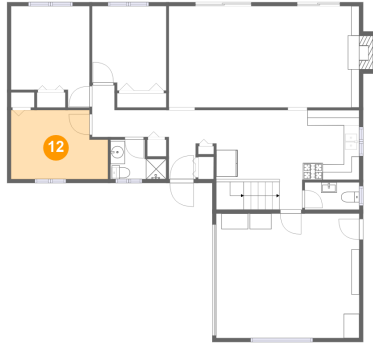


Dimensions: 7'2" x 5'1"  
Area: 29 sq. ft  
Counted as Living Area:  
Yes

Heated: Yes  
Finished: Yes  
Enclosed: Yes  
Contiguous:  
Yes  
Permitted: Yes  
Wet Space: Yes  
Addition: No  
Conversion: No

# 28024 Malvina Drive, Warren, Macomb County, Michigan, United States, 48088

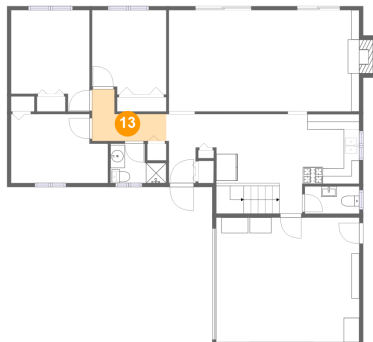
## 12 Floor 2 - Bedroom



Dimensions: 12'5" x 8'10"  
Area: 101 sq. ft  
Counted as Living Area:  
Yes

Heated: Yes  
Finished: Yes  
Enclosed: Yes  
Contiguous:  
Yes  
Permitted: Yes  
Wet Space: No  
Addition: No  
Conversion: No

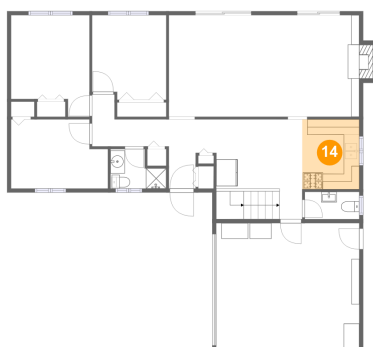
## 13 Floor 2 - Hall



Dimensions: 9'6" x 6'7"  
Area: 42 sq. ft  
Counted as Living Area:  
Yes

Heated: Yes  
Finished: Yes  
Enclosed: Yes  
Contiguous:  
Yes  
Permitted: Yes  
Wet Space: No  
Addition: No  
Conversion: No

## 14 Floor 2 - Kitchen



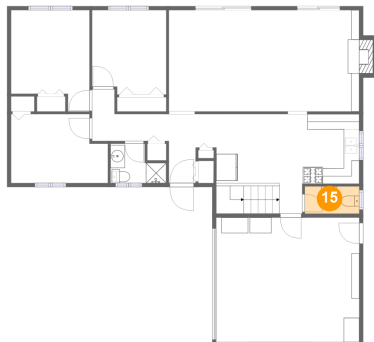
Dimensions: 7'4" x 8'11"  
Area: 65 sq. ft  
Counted as Living Area:  
Yes

Heated: Yes  
Finished: Yes  
Enclosed: Yes  
Contiguous:  
Yes  
Permitted: Yes  
Wet Space: No  
Addition: No  
Conversion: No



**28024 Malvina Drive, Warren, Macomb County,  
Michigan, United States, 48088**

**15 Floor 2 - Wc**



**Dimensions:** 7'0" x 3'6"  
**Area:** 24 sq. ft  
**Counted as Living Area:**  
Yes

**Heated:** Yes  
**Finished:** Yes  
**Enclosed:** Yes  
**Contiguous:**  
Yes  
**Permitted:** Yes  
**Wet Space:** Yes  
**Addition:** No  
**Conversion:** No