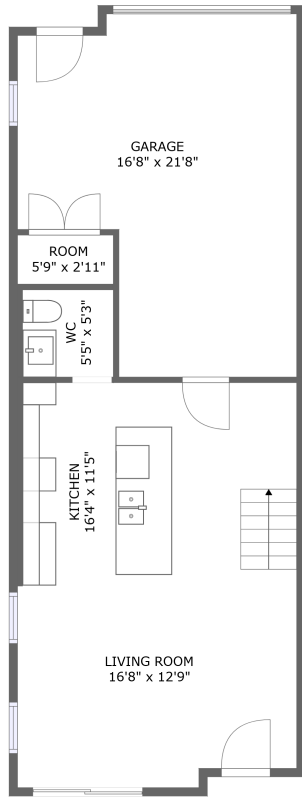
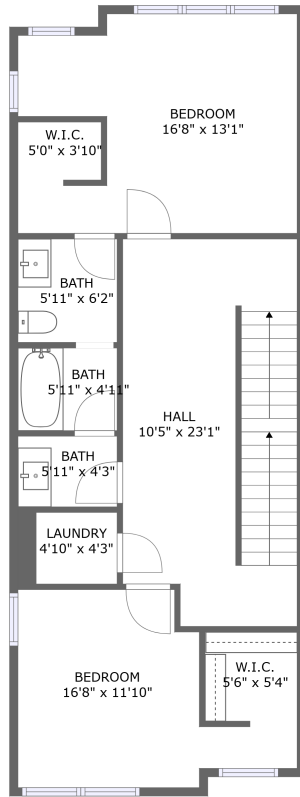


Home report

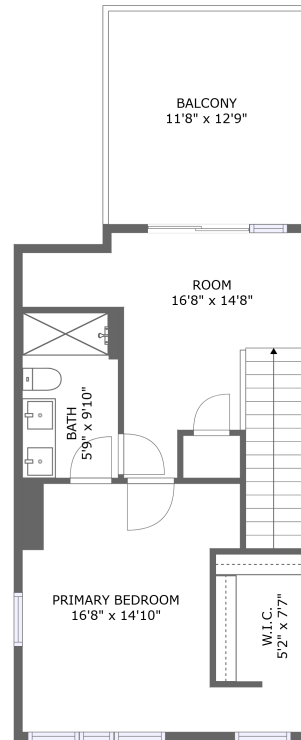
2923 Forest Avenue, Beacon Hills, Kansas City, Jackson County, Missouri, United States, 64109



FLOOR 1



FLOOR 2



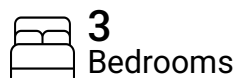
FLOOR 3

Total Area: 1687 sq. ft

Floor 1: 447 sq. ft, Floor 2: 757 sq. ft, Floor 3: 483 sq. ft

Excluded: Garage 302 sq. ft, Balcony 149 sq. ft, Low ceiling 8 sq. ft, Walls: 143 sq. ft

Property summary



Home report

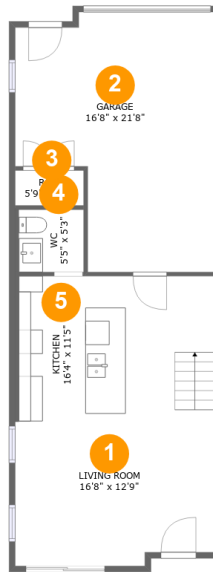
**2923 Forest Avenue, Beacon Hills, Kansas City, Jackson County,
Missouri, United States, 64109**

 **1**
Half baths

 **1**
Garages

Home report

2923 Forest Avenue, Beacon Hills, Kansas City, Jackson County, Missouri, United States, 64109



Room dimensions

Floor 1

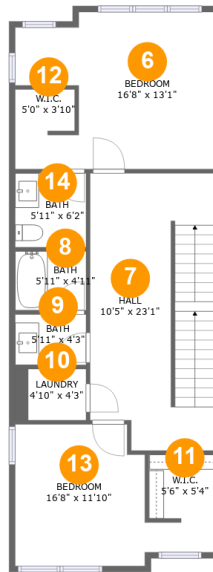
Total:447sqft

Excluded: 302sqft

#		Max Dimensions	sqft	Included
1	Living Room	16'8" x 12'9"	205 sq. ft	Yes
2	Garage	16'8" x 21'8"	301 sq. ft	No
3	Room	5'9" x 2'11"	17 sq. ft	Yes
4	WC	5'5" x 5'3"	30 sq. ft	Yes
5	Kitchen	16'4" x 11'5"	191 sq. ft	Yes

Home report

2923 Forest Avenue, Beacon Hills, Kansas City, Jackson County, Missouri, United States, 64109



Room dimensions

Floor 2

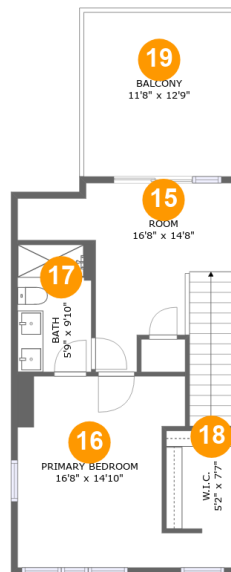
Total:757sqft

Excluded: 0sqft

#		Max Dimensions	sqft	Included
6	Bedroom	16'8" x 13'1"	190 sq. ft	Yes
7	Hall	10'5" x 23'1"	232 sq. ft	Yes
8	Bath	5'11" x 4'11"	29 sq. ft	Yes
9	Bath	5'11" x 4'3"	25 sq. ft	Yes
10	Laundry	4'10" x 4'3"	25 sq. ft	Yes
11	W.I.C.	5'6" x 5'4"	29 sq. ft	Yes
12	W.I.C.	5'0" x 3'10"	18 sq. ft	Yes
13	Bedroom	16'8" x 11'10"	140 sq. ft	Yes
14	Bath	5'11" x 6'2"	37 sq. ft	Yes

Home report

2923 Forest Avenue, Beacon Hills, Kansas City, Jackson County, Missouri, United States, 64109



Room dimensions

Floor 3

Total:483sqft

Excluded: 157sqft

#		Max Dimensions	sqft	Included
15	Room	16'8" x 14'8"	171 sq. ft	Yes
16	Primary Bedroom	16'8" x 14'10"	188 sq. ft	Yes
17	Bath	5'9" x 9'10"	56 sq. ft	Yes
18	W.I.C.	5'2" x 7'7"	39 sq. ft	Yes
19	Balcony	11'8" x 12'9"	149 sq. ft	No

2923 Forest Avenue, Beacon Hills, Kansas City, Jackson County, Missouri, United States, 64109

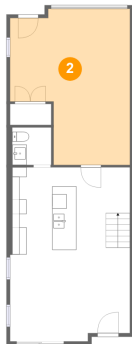
1 Floor 1 - Living Room



Max Dimensions: 16'8" x 12'9"
Calculated Area: 205 sq. ft
Included: Yes

Heated: Yes
Finished: Yes
Enclosed: Yes
Contiguous: Yes
Permitted: Yes
Wet space: No
Addition: No
Conversion: No

2 Floor 1 - Garage



Max Dimensions: 16'8" x 21'8"
Calculated Area: 301 sq. ft
Included: No

Heated: No
Finished: No
Enclosed: Yes
Contiguous: Yes
Permitted: Yes
Wet space: No
Addition: No
Conversion: No

2923 Forest Avenue, Beacon Hills, Kansas City, Jackson County, Missouri, United States, 64109

3 Floor 1 - Room



Max Dimensions: 5'9" x 2'11"
Calculated Area: 17 sq. ft
Included: Yes

Heated: Yes
Finished: Yes
Enclosed: Yes
Contiguous: Yes
Permitted: Yes
Wet space: No
Addition: No
Conversion: No

4 Floor 1 - WC



Max Dimensions: 5'5" x 5'3"
Calculated Area: 30 sq. ft
Included: Yes

Heated: Yes
Finished: Yes
Enclosed: Yes
Contiguous: Yes
Permitted: Yes
Wet space: Yes
Addition: No
Conversion: No

5 Floor 1 - Kitchen

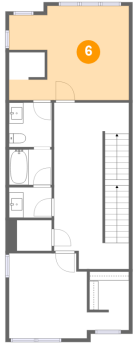


Max Dimensions: 16'4" x 11'5"
Calculated Area: 191 sq. ft
Included: Yes

Heated: Yes
Finished: Yes
Enclosed: Yes
Contiguous: Yes
Permitted: Yes
Wet space: No
Addition: No
Conversion: No

2923 Forest Avenue, Beacon Hills, Kansas City, Jackson County, Missouri, United States, 64109

6 Floor 2 - Bedroom



Max Dimensions: 16'8" x 13'1"
Calculated Area: 190 sq. ft
Included: Yes

Heated: Yes
Finished: Yes
Enclosed: Yes
Contiguous: Yes
Permitted: Yes
Wet space: No
Addition: No
Conversion: No

7 Floor 2 - Hall



Max Dimensions: 10'5" x 23'1"
Calculated Area: 232 sq. ft
Included: Yes

Heated: Yes
Finished: Yes
Enclosed: Yes
Contiguous: Yes
Permitted: Yes
Wet space: No
Addition: No
Conversion: No

8 Floor 2 - Bath

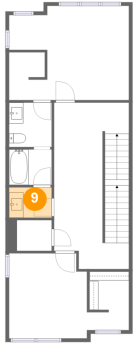


Max Dimensions: 5'11" x 4'11"
Calculated Area: 29 sq. ft
Included: Yes

Heated: Yes
Finished: Yes
Enclosed: Yes
Contiguous: Yes
Permitted: Yes
Wet space: Yes
Addition: No
Conversion: No

2923 Forest Avenue, Beacon Hills, Kansas City, Jackson County, Missouri, United States, 64109

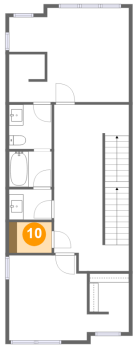
9 Floor 2 - Bath



Max Dimensions: 5'11" x 4'3"
Calculated Area: 25 sq. ft
Included: Yes

Heated: Yes
Finished: Yes
Enclosed: Yes
Contiguous: Yes
Permitted: Yes
Wet space: Yes
Addition: No
Conversion: No

10 Floor 2 - Laundry



Max Dimensions: 4'10" x 4'3"
Calculated Area: 25 sq. ft
Included: Yes

Heated: Yes
Finished: Yes
Enclosed: Yes
Contiguous: Yes
Permitted: Yes
Wet space: No
Addition: No
Conversion: No

11 Floor 2 - W.I.C.

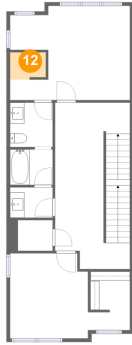


Max Dimensions: 5'6" x 5'4"
Calculated Area: 29 sq. ft
Included: Yes

Heated: Yes
Finished: Yes
Enclosed: Yes
Contiguous: Yes
Permitted: Yes
Wet space: No
Addition: No
Conversion: No

2923 Forest Avenue, Beacon Hills, Kansas City, Jackson County, Missouri, United States, 64109

12 Floor 2 - W.I.C.



Max Dimensions: 5'0" x 3'10"
Calculated Area: 18 sq. ft
Included: Yes

Heated: Yes
Finished: Yes
Enclosed: Yes
Contiguous: Yes
Permitted: Yes
Wet space: No
Addition: No
Conversion: No

13 Floor 2 - Bedroom



Max Dimensions: 16'8" x 11'10"
Calculated Area: 140 sq. ft
Included: Yes

Heated: Yes
Finished: Yes
Enclosed: Yes
Contiguous: Yes
Permitted: Yes
Wet space: No
Addition: No
Conversion: No

14 Floor 2 - Bath



Max Dimensions: 5'11" x 6'2"
Calculated Area: 37 sq. ft
Included: Yes

Heated: Yes
Finished: Yes
Enclosed: Yes
Contiguous: Yes
Permitted: Yes
Wet space: Yes
Addition: No
Conversion: No

2923 Forest Avenue, Beacon Hills, Kansas City, Jackson County, Missouri, United States, 64109

15 Floor 3 - Room



Max Dimensions: 16'8" x 14'8"
Calculated Area: 171 sq. ft
Included: Yes

Heated: Yes
Finished: Yes
Enclosed: Yes
Contiguous: Yes
Permitted: Yes
Wet space: No
Addition: No
Conversion: No

16 Floor 3 - Primary Bedroom



Max Dimensions: 16'8" x 14'10"
Calculated Area: 188 sq. ft
Included: Yes

Heated: Yes
Finished: Yes
Enclosed: Yes
Contiguous: Yes
Permitted: Yes
Wet space: No
Addition: No
Conversion: No

17 Floor 3 - Bath



Max Dimensions: 5'9" x 9'10"
Calculated Area: 56 sq. ft
Included: Yes

Heated: Yes
Finished: Yes
Enclosed: Yes
Contiguous: Yes
Permitted: Yes
Wet space: Yes
Addition: No
Conversion: No

2923 Forest Avenue, Beacon Hills, Kansas City, Jackson County, Missouri, United States, 64109

18 Floor 3 - W.I.C.



Max Dimensions: 5'2" x 7'7"
Calculated Area: 39 sq. ft
Included: Yes

Heated: Yes
Finished: Yes
Enclosed: Yes
Contiguous: Yes
Permitted: Yes
Wet space: No
Addition: No
Conversion: No

19 Floor 3 - Balcony



Max Dimensions: 11'8" x 12'9"
Calculated Area: 149 sq. ft
Included: No

Heated: No
Finished: Yes
Enclosed: No
Contiguous: Yes
Permitted: Yes
Wet space: No
Addition: No
Conversion: No