

Home report

359 Vernon Rd,2251 Vincennes Ct,Mansfield,OH,US, 2251 Vincennes Ct





Total Area: 1205 sq. ft


Below Ground: 0 sq. ft, Floor 2: 992 sq. ft, Floor 3: 213 sq. ft

Excluded: Basement 566 sq. ft, Storage 51 sq. ft, Garage 540 sq. ft, Deck 449 sq. ft, Low ceiling 104 sq. ft, Walls: 195 sq. ft

Property summary

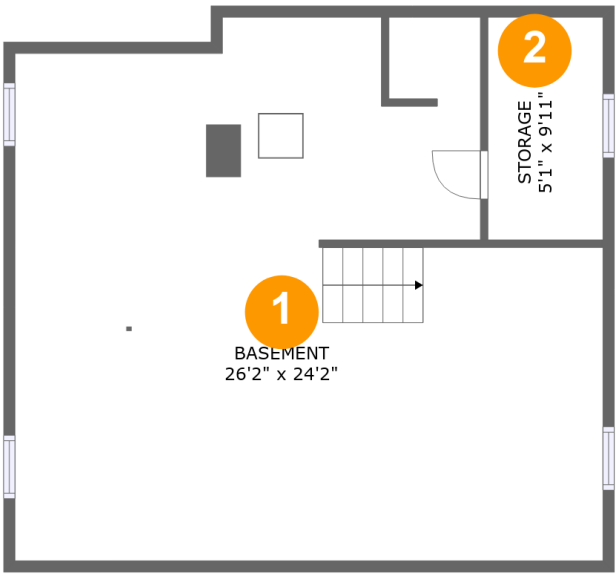
 **3** Floors

 **2** Bedrooms

 **2** Bathrooms

 **1** Garages

359 Vernon Rd,2251 Vincennes Ct,Mansfield,OH,US, 2251 Vincennes Ct

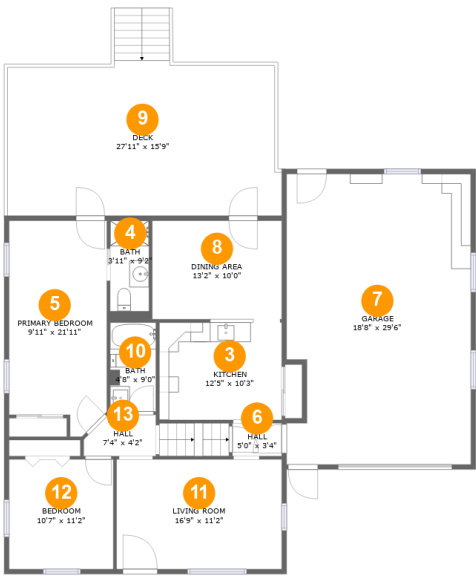


Room dimensions

Floor 1 Below ground Total:0sqft Excluded: 617sqft

#		Max Dimensions	sqft	Included
1	Basement	26'2" x 24'2"	557 sq. ft	No
2	Storage	5'1" x 9'11"	51 sq. ft	No

359 Vernon Rd,2251 Vincennes Ct,Mansfield,OH,US, 2251 Vincennes Ct

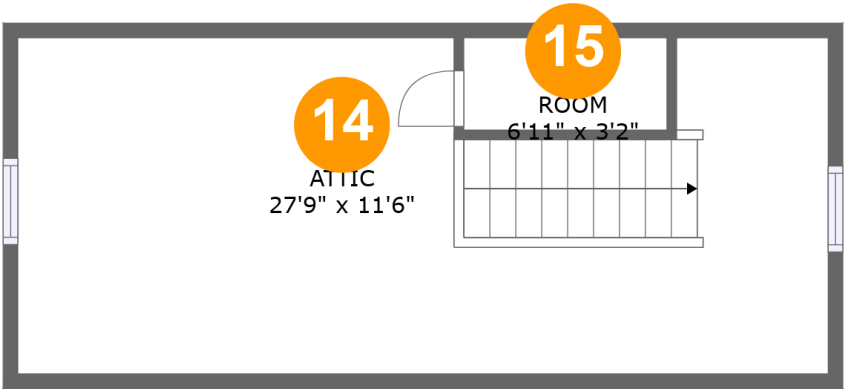


Room dimensions

Floor 2 Total:992sqft Excluded: 989sqft

#		Max Dimensions	sqft	Included
3	Kitchen	12'5" x 10'3"	126 sq. ft	Yes
4	Bath	3'11" x 9'2"	40 sq. ft	Yes
5	Primary Bedroom	9'11" x 21'11"	201 sq. ft	Yes
6	Hall	5'0" x 3'4"	17 sq. ft	Yes
7	Garage	18'8" x 29'6"	540 sq. ft	No
8	Dining Area	13'2" x 10'0"	132 sq. ft	Yes
9	Deck	27'11" x 15'9"	449 sq. ft	No
10	Bath	4'8" x 9'0"	42 sq. ft	Yes
11	Living Room	16'9" x 11'2"	187 sq. ft	Yes
12	Bedroom	10'7" x 11'2"	118 sq. ft	Yes
13	Hall	7'4" x 4'2"	28 sq. ft	Yes

359 Vernon Rd,2251 Vincennes Ct,Mansfield,OH,US, 2251 Vincennes Ct



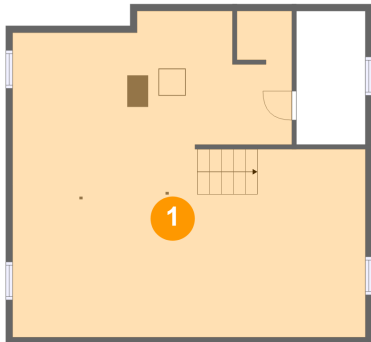
Room dimensions

Floor 3 Total:213sqft   Excluded: 104sqft

#		Max Dimensions	sqft	Included
14	Attic	27'9" x 11'6"	199 sq. ft	Yes
15	Room	6'11" x 3'2"	9 sq. ft	Yes

359 Vernon Rd,2251 Vincennes Ct,Mansfield,OH,US, 2251  
Vincennes Ct

1 Floor 1 - Basement



Max Dimensions: 26'2" x 24'2"  
Calculated Area: 557 sq. ft  
Included: No

Heated: Yes  
Finished: No  
Enclosed: Yes  
Contiguous: Yes  
Permitted: Yes  
Wet space: No  
Addition: No  
Conversion: No

2 Floor 1 - Storage



Max Dimensions: 5'1" x 9'11"  
Calculated Area: 51 sq. ft  
Included: No

Heated: No  
Finished: No  
Enclosed: No  
Contiguous: Yes  
Permitted: Yes  
Wet space: No  
Addition: No  
Conversion: No

359 Vernon Rd,2251 Vincennes Ct,Mansfield,OH,US, 2251  
Vincennes Ct

3 Floor 2 - Kitchen



Max Dimensions: 12'5" x 10'3"  
Calculated Area: 126 sq. ft  
Included: Yes

Heated: Yes  
Finished: Yes  
Enclosed: Yes  
Contiguous: Yes  
Permitted: Yes  
Wet space: No  
Addition: No  
Conversion: No

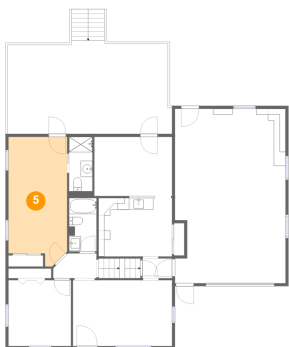
4 Floor 2 - Bath



Max Dimensions: 3'11" x 9'2"  
Calculated Area: 40 sq. ft  
Included: Yes

Heated: Yes  
Finished: Yes  
Enclosed: Yes  
Contiguous: Yes  
Permitted: Yes  
Wet space: Yes  
Addition: No  
Conversion: No

5 Floor 2 - Primary Bedroom



Max Dimensions: 9'11" x 21'11"  
Calculated Area: 201 sq. ft  
Included: Yes

Heated: Yes  
Finished: Yes  
Enclosed: Yes  
Contiguous: Yes  
Permitted: Yes  
Wet space: No  
Addition: No  
Conversion: No

359 Vernon Rd,2251 Vincennes Ct,Mansfield,OH,US, 2251  
Vincennes Ct

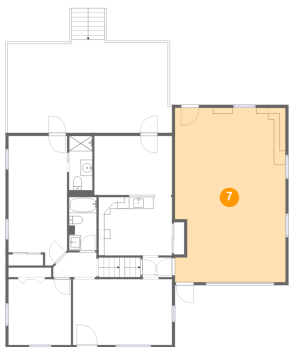
6 Floor 2 - Hall



Max Dimensions: 5'0" x 3'4"  
Calculated Area: 17 sq. ft  
Included: Yes

Heated: Yes  
Finished: Yes  
Enclosed: Yes  
Contiguous: Yes  
Permitted: Yes  
Wet space: No  
Addition: No  
Conversion: No

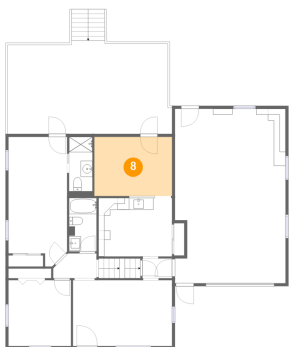
7 Floor 2 - Garage



Max Dimensions: 18'8" x 29'6"  
Calculated Area: 540 sq. ft  
Included: No

Heated: No  
Finished: No  
Enclosed: Yes  
Contiguous: Yes  
Permitted: Yes  
Wet space: No  
Addition: No  
Conversion: No

8 Floor 2 - Dining Area

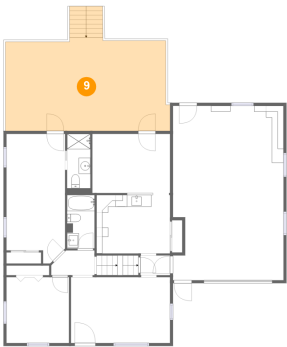


Max Dimensions: 13'2" x 10'0"  
Calculated Area: 132 sq. ft  
Included: Yes

Heated: Yes  
Finished: Yes  
Enclosed: Yes  
Contiguous: Yes  
Permitted: Yes  
Wet space: No  
Addition: No  
Conversion: No

359 Vernon Rd,2251 Vincennes Ct,Mansfield,OH,US, 2251 Vincennes Ct

9 Floor 2 - Deck



Max Dimensions: 27'11" x 15'9"  
Calculated Area: 449 sq. ft  
Included: No

Heated: No  
Finished: Yes  
Enclosed: No  
Contiguous: Yes  
Permitted: Yes  
Wet space: No  
Addition: No  
Conversion: No

10 Floor 2 - Bath



Max Dimensions: 4'8" x 9'0"  
Calculated Area: 42 sq. ft  
Included: Yes

Heated: Yes  
Finished: Yes  
Enclosed: Yes  
Contiguous: Yes  
Permitted: Yes  
Wet space: Yes  
Addition: No  
Conversion: No

11 Floor 2 - Living Room



Max Dimensions: 16'9" x 11'2"  
Calculated Area: 187 sq. ft  
Included: Yes

Heated: Yes  
Finished: Yes  
Enclosed: Yes  
Contiguous: Yes  
Permitted: Yes  
Wet space: No  
Addition: No  
Conversion: No

359 Vernon Rd,2251 Vincennes Ct,Mansfield,OH,US, 2251  
Vincennes Ct

12 Floor 2 - Bedroom



Max Dimensions: 10'7" x 11'2"  
Calculated Area: 118 sq. ft  
Included: Yes

Heated: Yes  
Finished: Yes  
Enclosed: Yes  
Contiguous: Yes  
Permitted: Yes  
Wet space: No  
Addition: No  
Conversion: No

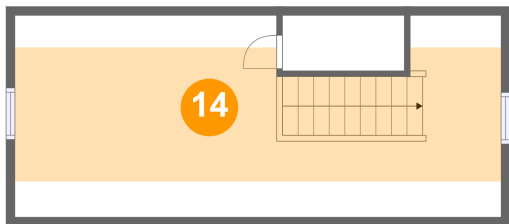
13 Floor 2 - Hall



Max Dimensions: 7'4" x 4'2"  
Calculated Area: 28 sq. ft  
Included: Yes

Heated: Yes  
Finished: Yes  
Enclosed: Yes  
Contiguous: Yes  
Permitted: Yes  
Wet space: No  
Addition: No  
Conversion: No

14 Floor 3 - Attic

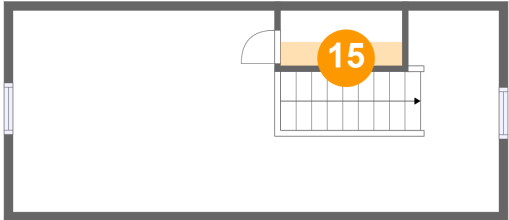


Max Dimensions: 27'9" x 11'6"  
Calculated Area: 199 sq. ft  
Included: No

Heated: No  
Finished: Yes  
Enclosed: Yes  
Contiguous: Yes  
Permitted: Yes  
Wet space: No  
Addition: No  
Conversion: No

359 Vernon Rd,2251 Vincennes Ct,Mansfield,OH,US, 2251 Vincennes Ct

15 Floor 3 - Room



Max Dimensions: 6'11" x 3'2"  
Calculated Area: 9 sq. ft  
Included: Yes

Heated: Yes  
Finished: Yes  
Enclosed: Yes  
Contiguous: Yes  
Permitted: Yes  
Wet space: No  
Addition: No  
Conversion: No