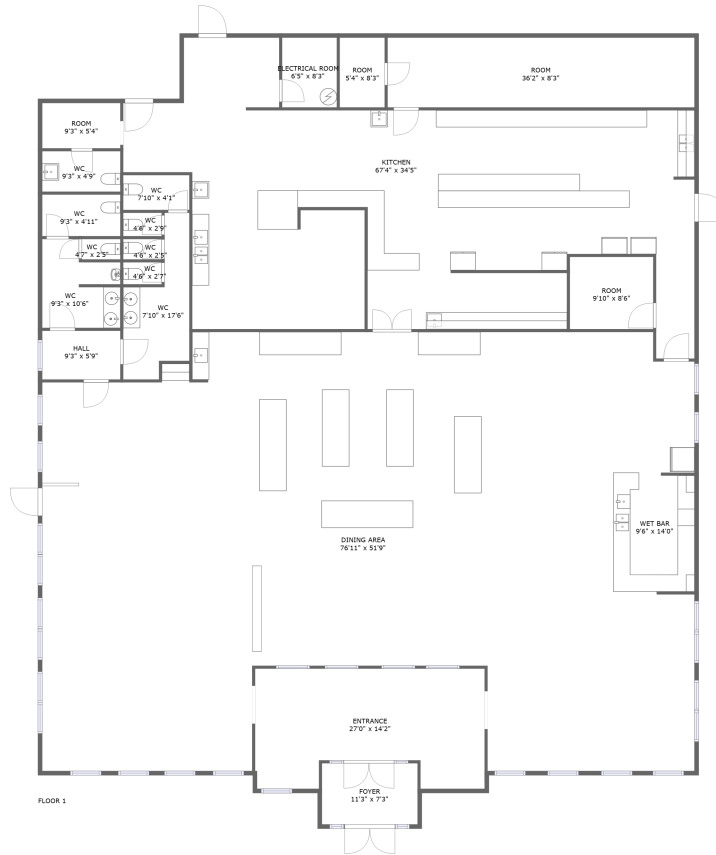


5030 Valley View Blvd Northwest, Roundhill, Roanoke, Roanoke city, Virginia, United States, 24012




Property summary

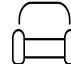
 **0** Garages

 **0** Bedrooms

 **0** Bathrooms

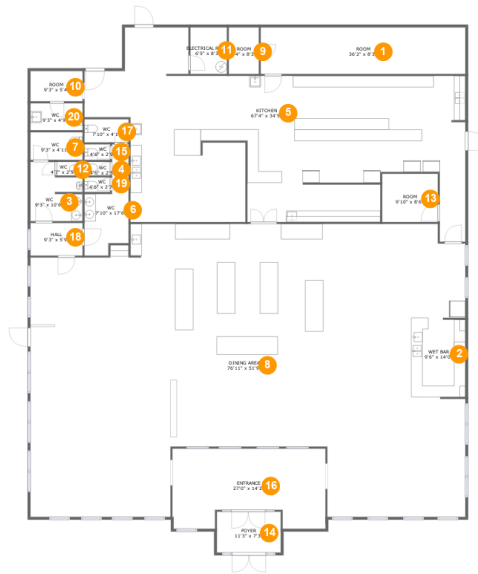
 **3** Half baths

 **1** Floors

 **6,740** Gross living area sqft

 **6,796** Total sqft

5030 Valley View Blvd Northwest, Roundhill, Roanoke, Roanoke city, Virginia, United States, 24012



Room dimensions

Floor 1

Total sqft: 6796 Living area: 6740

#		Dimensions	sqft	Counted as living area
1	Room	36'2" x 8'3"	298 sq. ft	Yes
2	Wet Bar	9'6" x 14'0"	131 sq. ft	Yes
3	WC	9'3" x 10'6"	82 sq. ft	Yes
4	WC	4'6" x 2'5"	11 sq. ft	Yes
5	Kitchen	67'4" x 34'5"	1598 sq. ft	Yes
6	WC	7'10" x 17'6"	103 sq. ft	Yes
7	WC	9'3" x 4'11"	45 sq. ft	Yes
8	Dining Area	76'11" x 51'9"	3387 sq. ft	Yes
9	Room	5'4" x 8'3"	44 sq. ft	Yes
10	Room	9'3" x 5'4"	49 sq. ft	Yes
11	Electrical Room	6'5" x 8'3"	53 sq. ft	No

Scan captured on Mon, 10 Feb 2025 15:58:14 GMT

Information is calculated by Cubicasa technology deemed highly reliable but not guaranteed.

**5030 Valley View Blvd Northwest, Roundhill, Roanoke,
Roanoke city, Virginia, United States, 24012**

#		Dimensions	sqft	Counted as living area
12	WC	4'7" x 2'5"	11 sq. ft	Yes
13	Room	9'10" x 8'6"	84 sq. ft	Yes
14	Foyer	11'3" x 7'3"	81 sq. ft	Yes
15	WC	4'6" x 2'9"	13 sq. ft	Yes
16	Entrance	27'0" x 14'2"	343 sq. ft	Yes
17	WC	7'10" x 4'1"	32 sq. ft	Yes
18	Hall	9'3" x 5'9"	53 sq. ft	Yes
19	WC	4'6" x 2'7"	12 sq. ft	Yes
20	WC	9'3" x 4'9"	44 sq. ft	Yes

5030 Valley View Blvd Northwest, Roundhill, Roanoke, Roanoke city, Virginia, United States, 24012

1 Floor 1 - Room



Dimensions: 36'2" x 8'3"
Area: 298 sq. ft
Counted as living area: Yes

Heated: Yes
Finished: Yes
Enclosed: Yes
Contiguous: Yes
Permitted: Yes
Wet space: No
Addition: No
Conversion: No

2 Floor 1 - Wet Bar



Dimensions: 9'6" x 14'0"
Area: 131 sq. ft
Counted as living area: Yes

Heated: Yes
Finished: Yes
Enclosed: Yes
Contiguous: Yes
Permitted: Yes
Wet space: No
Addition: No
Conversion: No

5030 Valley View Blvd Northwest, Roundhill, Roanoke, Roanoke city, Virginia, United States, 24012

3 Floor 1 - WC



Dimensions: 9'3" x 10'6"
Area: 82 sq. ft
Counted as living area: Yes

Heated: Yes
Finished: Yes
Enclosed: Yes
Contiguous: Yes
Permitted: Yes
Wet space: Yes
Addition: No
Conversion: No

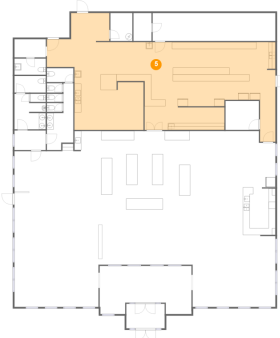
4 Floor 1 - WC



Dimensions: 4'6" x 2'5"
Area: 11 sq. ft
Counted as living area: Yes

Heated: Yes
Finished: Yes
Enclosed: Yes
Contiguous: Yes
Permitted: Yes
Wet space: No
Addition: No
Conversion: No

5 Floor 1 - Kitchen



Dimensions: 67'4" x 34'5"
Area: 1598 sq. ft
Counted as living area: Yes

Heated: Yes
Finished: Yes
Enclosed: Yes
Contiguous: Yes
Permitted: Yes
Wet space: No
Addition: No
Conversion: No

5030 Valley View Blvd Northwest, Roundhill, Roanoke, Roanoke city, Virginia, United States, 24012

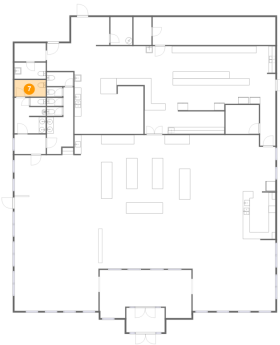
6 Floor 1 - WC



Dimensions: 7'10" x 17'6"
Area: 103 sq. ft
Counted as living area: Yes

Heated: Yes
Finished: Yes
Enclosed: Yes
Contiguous: Yes
Permitted: Yes
Wet space: Yes
Addition: No
Conversion: No

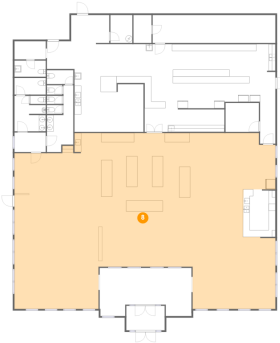
7 Floor 1 - WC



Dimensions: 9'3" x 4'11"
Area: 45 sq. ft
Counted as living area: Yes

Heated: Yes
Finished: Yes
Enclosed: Yes
Contiguous: Yes
Permitted: Yes
Wet space: Yes
Addition: No
Conversion: No

8 Floor 1 - Dining Area

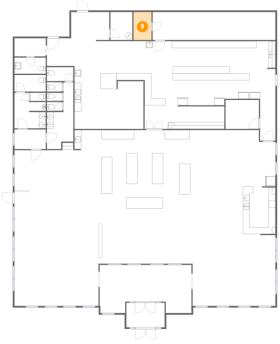


Dimensions: 76'11" x 51'9"
Area: 3387 sq. ft
Counted as living area: Yes

Heated: Yes
Finished: Yes
Enclosed: Yes
Contiguous: Yes
Permitted: Yes
Wet space: No
Addition: No
Conversion: No

5030 Valley View Blvd Northwest, Roundhill, Roanoke, Roanoke city, Virginia, United States, 24012

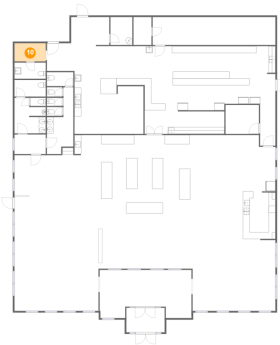
9 Floor 1 - Room



Dimensions: 5'4" x 8'3"
Area: 44 sq. ft
Counted as living area: Yes

Heated: Yes
Finished: Yes
Enclosed: Yes
Contiguous: Yes
Permitted: Yes
Wet space: No
Addition: No
Conversion: No

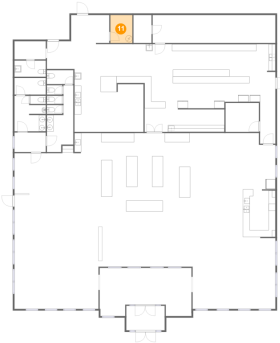
10 Floor 1 - Room



Dimensions: 9'3" x 5'4"
Area: 49 sq. ft
Counted as living area: Yes

Heated: Yes
Finished: Yes
Enclosed: Yes
Contiguous: Yes
Permitted: Yes
Wet space: No
Addition: No
Conversion: No

11 Floor 1 - Electrical Room



Dimensions: 6'5" x 8'3"
Area: 53 sq. ft
Counted as living area: No

Heated: No
Finished: No
Enclosed: Yes
Contiguous: Yes
Permitted: Yes
Wet space: No
Addition: No
Conversion: No

5030 Valley View Blvd Northwest, Roundhill, Roanoke, Roanoke city, Virginia, United States, 24012

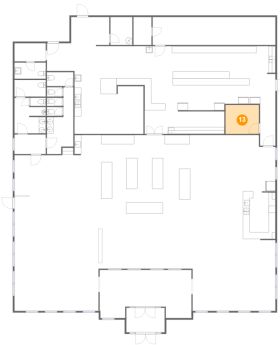
12 Floor 1 - WC



Dimensions: 4'7" x 2'5"
Area: 11 sq. ft
Counted as living area: Yes

Heated: Yes
Finished: Yes
Enclosed: Yes
Contiguous: Yes
Permitted: Yes
Wet space: No
Addition: No
Conversion: No

13 Floor 1 - Room



Dimensions: 9'10" x 8'6"
Area: 84 sq. ft
Counted as living area: Yes

Heated: Yes
Finished: Yes
Enclosed: Yes
Contiguous: Yes
Permitted: Yes
Wet space: No
Addition: No
Conversion: No

14 Floor 1 - Foyer



Dimensions: 11'3" x 7'3"
Area: 81 sq. ft
Counted as living area: Yes

Heated: Yes
Finished: Yes
Enclosed: Yes
Contiguous: Yes
Permitted: Yes
Wet space: No
Addition: No
Conversion: No

5030 Valley View Blvd Northwest, Roundhill, Roanoke, Roanoke city, Virginia, United States, 24012

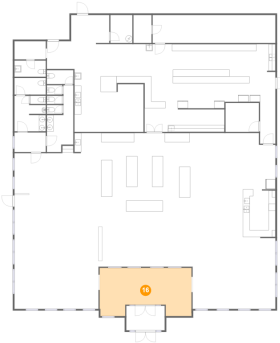
15 Floor 1 - WC



Dimensions: 4'6" x 2'9"
Area: 13 sq. ft
Counted as living area: Yes

Heated: Yes
Finished: Yes
Enclosed: Yes
Contiguous: Yes
Permitted: Yes
Wet space: No
Addition: No
Conversion: No

16 Floor 1 - Entrance



Dimensions: 27'0" x 14'2"
Area: 343 sq. ft
Counted as living area: Yes

Heated: Yes
Finished: Yes
Enclosed: Yes
Contiguous: Yes
Permitted: Yes
Wet space: No
Addition: No
Conversion: No

17 Floor 1 - WC

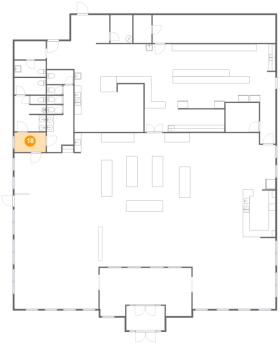


Dimensions: 7'10" x 4'1"
Area: 32 sq. ft
Counted as living area: Yes

Heated: Yes
Finished: Yes
Enclosed: Yes
Contiguous: Yes
Permitted: Yes
Wet space: Yes
Addition: No
Conversion: No

5030 Valley View Blvd Northwest, Roundhill, Roanoke, Roanoke city, Virginia, United States, 24012

18 Floor 1 - Hall



Dimensions: 9'3" x 5'9"
Area: 53 sq. ft
Counted as living area: Yes

Heated: Yes
Finished: Yes
Enclosed: Yes
Contiguous: Yes
Permitted: Yes
Wet space: No
Addition: No
Conversion: No

19 Floor 1 - WC



Dimensions: 4'6" x 2'7"
Area: 12 sq. ft
Counted as living area: Yes

Heated: Yes
Finished: Yes
Enclosed: Yes
Contiguous: Yes
Permitted: Yes
Wet space: No
Addition: No
Conversion: No

20 Floor 1 - WC



Dimensions: 9'3" x 4'9"
Area: 44 sq. ft
Counted as living area: Yes

Heated: Yes
Finished: Yes
Enclosed: Yes
Contiguous: Yes
Permitted: Yes
Wet space: Yes
Addition: No
Conversion: No