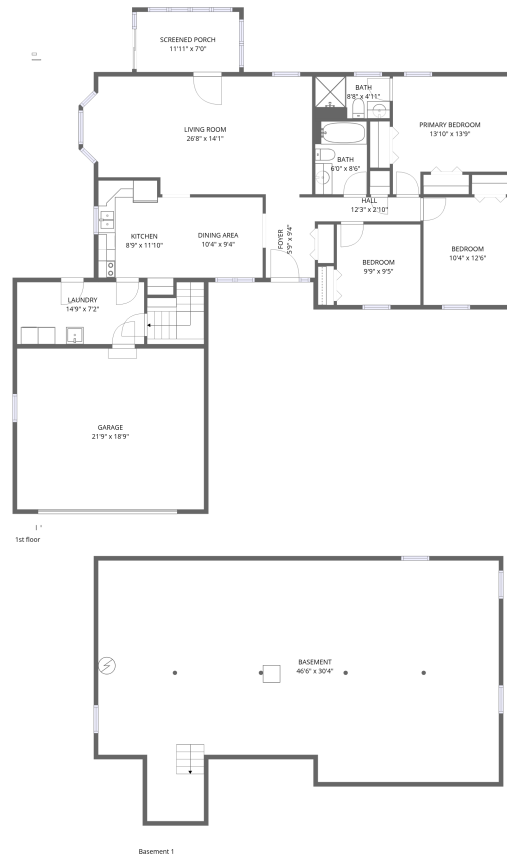


Home data report

10565 Monroe Mills Rd, Gambier, OH, US

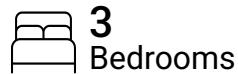


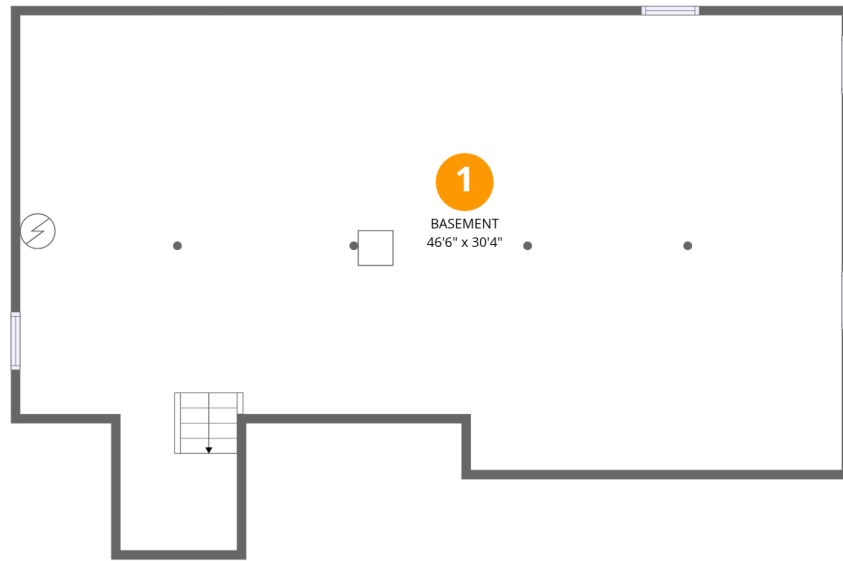
Total Area: 1370 sq. ft

Below Ground: 0 sq. ft, 1st Floor: 1370 sq. ft

Excluded: Basement 1169 sq. ft, Garage 407 sq. ft, Screened porch 84 sq. ft, Walls: 218 sq. ft

Property summary





Room dimensions

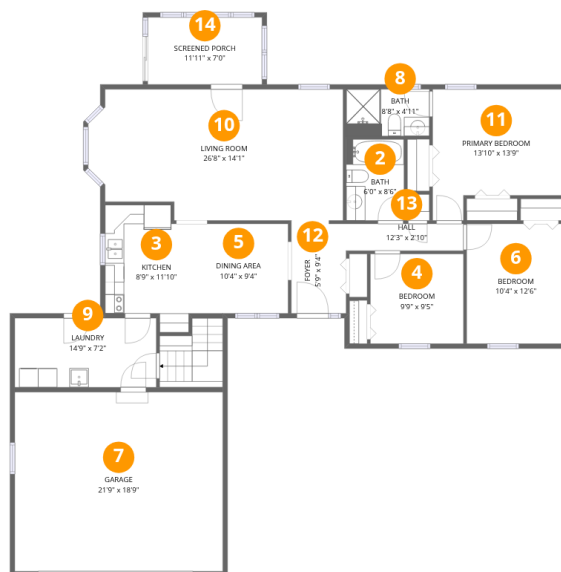
Floor 1 Below grade

Total: 0sqft

Excluded: 1169sqft

#		Dimensions	sqft	Counted as living area
1	Basement	46'6" x 30'4"	1169 sq. ft	No

10565 Monroe Mills Rd, Gambier, OH, US



Room dimensions

Floor 2

Total: 1370 sqft Excluded: 491 sqft

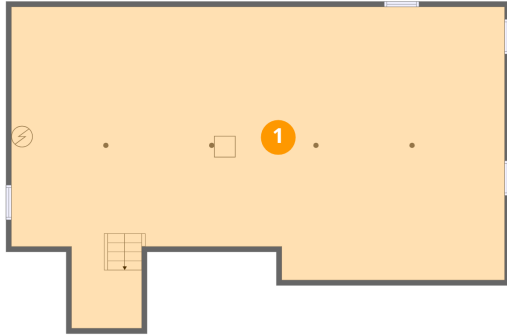
#		Dimensions	sqft	Counted as living area
2	Bath	6'0" x 8'6"	51 sq. ft	Yes
3	Kitchen	8'9" x 11'10"	102 sq. ft	Yes
4	Bedroom	9'9" x 9'5"	91 sq. ft	Yes
5	Dining Area	10'4" x 9'4"	97 sq. ft	Yes
6	Bedroom	10'4" x 12'6"	129 sq. ft	Yes
7	Garage	21'9" x 18'9"	407 sq. ft	No
8	Bath	8'8" x 4'11"	42 sq. ft	Yes
9	Laundry	14'9" x 7'2"	107 sq. ft	Yes
10	Living Room	26'8" x 14'1"	339 sq. ft	Yes
11	Primary Bedroom	13'10" x 13'9"	162 sq. ft	Yes
12	Foyer	5'9" x 9'4"	54 sq. ft	Yes

Home data report

10565 Monroe Mills Rd,Gambier,OH,US

#		Dimensions	sqft	Counted as living area
13	Hall	12'3" x 2'10"	35 sq. ft	Yes
14	Screened Porch	11'11" x 7'0"	84 sq. ft	No

1 Floor 1 - Basement



Dimensions: 46'6" x 30'4"
Area: 1169 sq. ft
Counted as living area: No

Heated: Yes
Finished: No
Enclosed: Yes
Contiguous: Yes
Permitted: Yes
Wet space: No
Addition: No
Conversion: No

2 Floor 2 - Bath



Dimensions: 6'0" x 8'6"
Area: 51 sq. ft
Counted as living area: Yes

Heated: Yes
Finished: Yes
Enclosed: Yes
Contiguous: Yes
Permitted: Yes
Wet space: Yes
Addition: No
Conversion: No

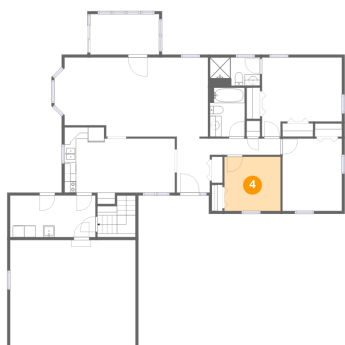
3 Floor 2 - Kitchen



Dimensions: 8'9" x 11'10"
Area: 102 sq. ft
Counted as living area: Yes

Heated: Yes
Finished: Yes
Enclosed: Yes
Contiguous: Yes
Permitted: Yes
Wet space: No
Addition: No
Conversion: No

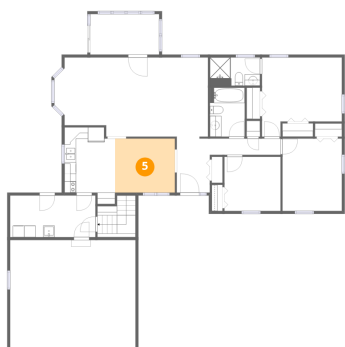
4 Floor 2 - Bedroom



Dimensions: 9'9" x 9'5"
Area: 91 sq. ft
Counted as living area: Yes

Heated: Yes
Finished: Yes
Enclosed: Yes
Contiguous: Yes
Permitted: Yes
Wet space: No
Addition: No
Conversion: No

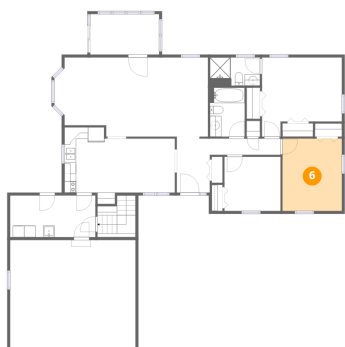
5 Floor 2 - Dining Area



Dimensions: 10'4" x 9'4"
Area: 97 sq. ft
Counted as living area: Yes

Heated: Yes
Finished: Yes
Enclosed: Yes
Contiguous: Yes
Permitted: Yes
Wet space: No
Addition: No
Conversion: No

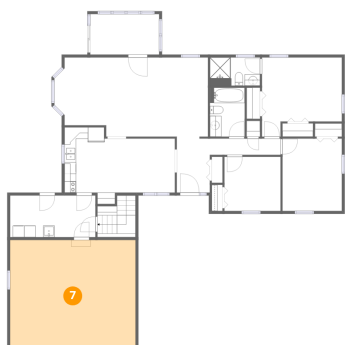
6 Floor 2 - Bedroom



Dimensions: 10'4" x 12'6"
Area: 129 sq. ft
Counted as living area: Yes

Heated: Yes
Finished: Yes
Enclosed: Yes
Contiguous: Yes
Permitted: Yes
Wet space: No
Addition: No
Conversion: No

7 Floor 2 - Garage



Dimensions: 21'9" x 18'9"
Area: 407 sq. ft
Counted as living area: No

Heated: No
Finished: No
Enclosed: Yes
Contiguous: Yes
Permitted: Yes
Wet space: No
Addition: No
Conversion: No

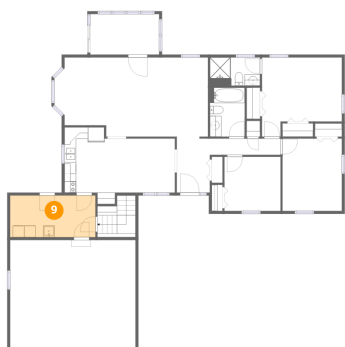
8 Floor 2 - Bath



Dimensions: 8'8" x 4'11"
Area: 42 sq. ft
Counted as living area: Yes

Heated: Yes
Finished: Yes
Enclosed: Yes
Contiguous: Yes
Permitted: Yes
Wet space: Yes
Addition: No
Conversion: No

9 Floor 2 - Laundry



Dimensions: 14'9" x 7'2"
Area: 107 sq. ft
Counted as living area: Yes

Heated: Yes
Finished: Yes
Enclosed: Yes
Contiguous: Yes
Permitted: Yes
Wet space: No
Addition: No
Conversion: No

10 Floor 2 - Living Room



Dimensions: 26'8" x 14'1"
Area: 339 sq. ft
Counted as living area: Yes

Heated: Yes
Finished: Yes
Enclosed: Yes
Contiguous: Yes
Permitted: Yes
Wet space: No
Addition: No
Conversion: No

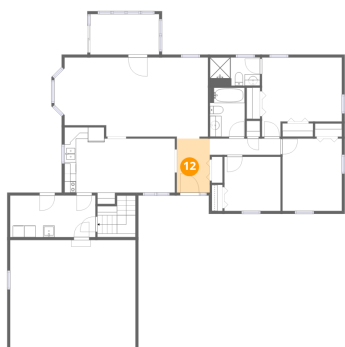
11 Floor 2 - Primary Bedroom



Dimensions: 13'10" x 13'9"
Area: 162 sq. ft
Counted as living area: Yes

Heated: Yes
Finished: Yes
Enclosed: Yes
Contiguous: Yes
Permitted: Yes
Wet space: No
Addition: No
Conversion: No

12 Floor 2 - Foyer



Dimensions: 5'9" x 9'4"
Area: 54 sq. ft
Counted as living area: Yes

Heated: Yes
Finished: Yes
Enclosed: Yes
Contiguous: Yes
Permitted: Yes
Wet space: No
Addition: No
Conversion: No

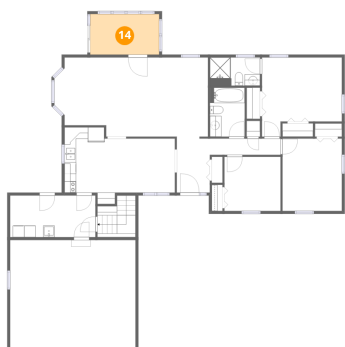
13 Floor 2 - Hall



Dimensions: 12'3" x 2'10"
Area: 35 sq. ft
Counted as living area: Yes

Heated: Yes
Finished: Yes
Enclosed: Yes
Contiguous: Yes
Permitted: Yes
Wet space: No
Addition: No
Conversion: No

14 Floor 2 - Screened Porch



Dimensions: 11'11" x 7'0"
Area: 84 sq. ft
Counted as living area: No

Heated: No
Finished: No
Enclosed: No
Contiguous: Yes
Permitted: Yes
Wet space: No
Addition: No
Conversion: No