

## Home report

1080 St. Lucia Place, Orléans North West, Orléans, Ontario,  
Canada, K1C 2G3



**Total Area: 1619 sq. ft**

Floor 1: 261 sq. ft, Floor 2: 681 sq. ft, Floor 3: 677 sq. ft

Excluded: Storage 252 sq. ft, Laundry 75 sq. ft, Undefined 48 sq. ft, Embedded window 11 sq. ft, Walls: 148 sq. ft

## Property summary

 **3** Floors

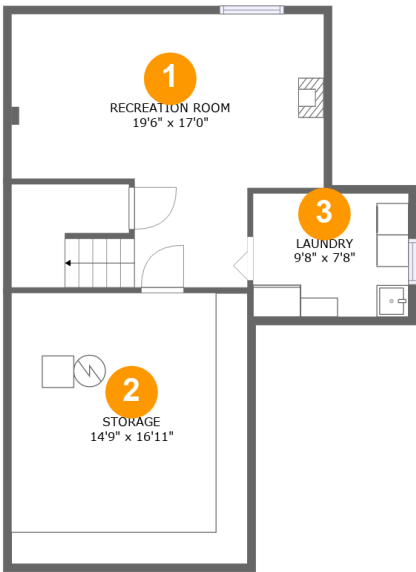
 **3** Bedrooms

 **1** Bathrooms

 **1** Half baths

Home report

1080 St. Lucia Place, Orléans North West, Orléans, Ontario,  
Canada, K1C 2G3



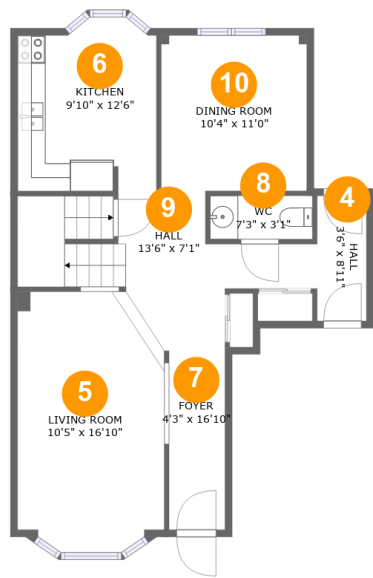
Room dimensions

Floor 1 Total:261sqft   Excluded: 375sqft

#		Max Dimensions	sqft	Included
1	Recreation Room	19'6" x 17'0"	251 sq. ft	Yes
2	Storage	14'9" x 16'11"	249 sq. ft	No
3	Laundry	9'8" x 7'8"	75 sq. ft	No

Home report

1080 St. Lucia Place, Orléans North West, Orléans, Ontario, Canada, K1C 2G3



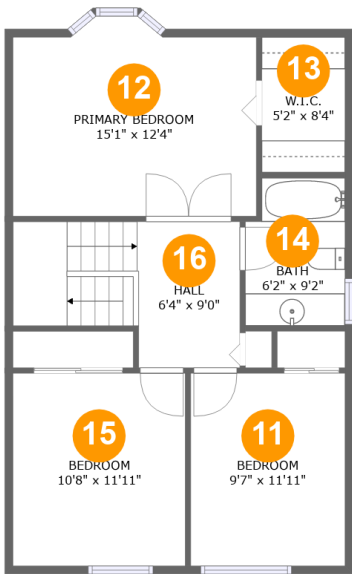
Room dimensions

Floor 2 Total:681sqft    Excluded: 11sqft

#		Max Dimensions	sqft	Included
4	Hall	3'6" x 8'11"	31 sq. ft	Yes
5	Living Room	10'5" x 16'10"	176 sq. ft	Yes
6	Kitchen	9'10" x 12'6"	114 sq. ft	Yes
7	Foyer	4'3" x 16'10"	71 sq. ft	Yes
8	WC	7'3" x 3'1"	22 sq. ft	Yes
9	Hall	13'6" x 7'1"	113 sq. ft	Yes
10	Dining Room	10'4" x 11'0"	114 sq. ft	Yes

Home report

1080 St. Lucia Place, Orléans North West, Orléans, Ontario,  
Canada, K1C 2G3



Room dimensions

Floor 3 Total:677sqft   Excluded: 0sqft

#		Max Dimensions	sqft	Included
11	Bedroom	9'7" x 11'11"	114 sq. ft	Yes
12	Primary Bedroom	15'1" x 12'4"	172 sq. ft	Yes
13	W.I.C.	5'2" x 8'4"	43 sq. ft	Yes
14	Bath	6'2" x 9'2"	54 sq. ft	Yes
15	Bedroom	10'8" x 11'11"	127 sq. ft	Yes
16	Hall	6'4" x 9'0"	107 sq. ft	Yes

1080 St. Lucia Place, Orléans North West, Orléans, Ontario,  
Canada, K1C 2G3

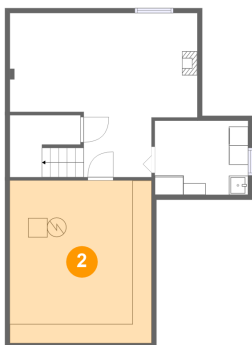
1 Floor 1 - Recreation Room



Max Dimensions: 19'6" x 17'0"  
Calculated Area: 251 sq. ft  
Included: No

Heated: Yes  
Finished: Yes  
Enclosed: Yes  
Contiguous: No  
Permitted: Yes  
Wet space: No  
Addition: No  
Conversion: No

2 Floor 1 - Storage

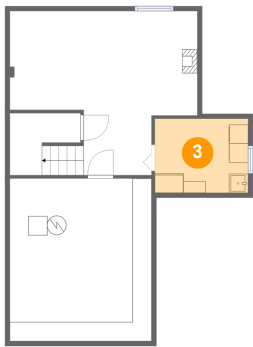


Max Dimensions: 14'9" x 16'11"  
Calculated Area: 249 sq. ft  
Included: No

Heated: No  
Finished: No  
Enclosed: No  
Contiguous: Yes  
Permitted: Yes  
Wet space: No  
Addition: No  
Conversion: No

1080 St. Lucia Place, Orléans North West, Orléans, Ontario,  
Canada, K1C 2G3

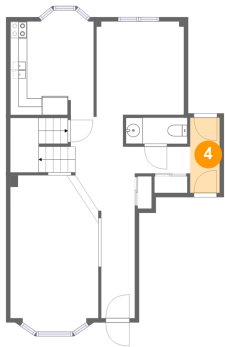
3 Floor 1 - Laundry



Max Dimensions: 9'8" x 7'8"  
Calculated Area: 75 sq. ft  
Included: No

Heated: Yes  
Finished: No  
Enclosed: Yes  
Contiguous: Yes  
Permitted: Yes  
Wet space: No  
Addition: No  
Conversion: No

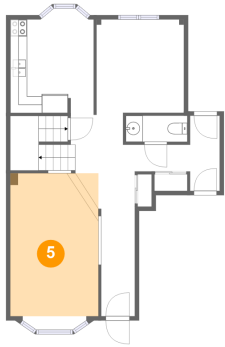
4 Floor 2 - Hall



Max Dimensions: 3'6" x 8'11"  
Calculated Area: 31 sq. ft  
Included: Yes

Heated: Yes  
Finished: Yes  
Enclosed: Yes  
Contiguous: Yes  
Permitted: Yes  
Wet space: No  
Addition: No  
Conversion: No

5 Floor 2 - Living Room

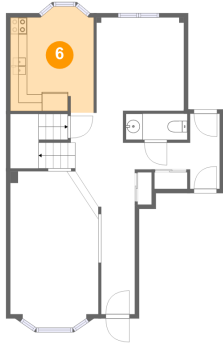


Max Dimensions: 10'5" x 16'10"  
Calculated Area: 176 sq. ft  
Included: Yes

Heated: Yes  
Finished: Yes  
Enclosed: Yes  
Contiguous: Yes  
Permitted: Yes  
Wet space: No  
Addition: No  
Conversion: No

1080 St. Lucia Place, Orléans North West, Orléans, Ontario,  
Canada, K1C 2G3

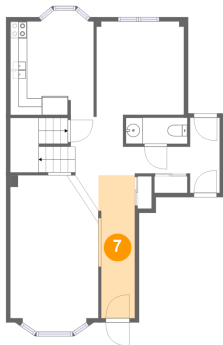
## 6 Floor 2 - Kitchen



Max Dimensions: 9'10" x 12'6"  
Calculated Area: 114 sq. ft  
Included: Yes

Heated: Yes  
Finished: Yes  
Enclosed: Yes  
Contiguous: Yes  
Permitted: Yes  
Wet space: No  
Addition: No  
Conversion: No

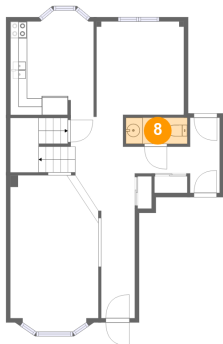
## 7 Floor 2 - Foyer



Max Dimensions: 4'3" x 16'10"  
Calculated Area: 71 sq. ft  
Included: Yes

Heated: Yes  
Finished: Yes  
Enclosed: Yes  
Contiguous: Yes  
Permitted: Yes  
Wet space: No  
Addition: No  
Conversion: No

## 8 Floor 2 - WC



Max Dimensions: 7'3" x 3'1"  
Calculated Area: 22 sq. ft  
Included: Yes

Heated: Yes  
Finished: Yes  
Enclosed: Yes  
Contiguous: Yes  
Permitted: Yes  
Wet space: Yes  
Addition: No  
Conversion: No

1080 St. Lucia Place, Orléans North West, Orléans, Ontario,  
Canada, K1C 2G3

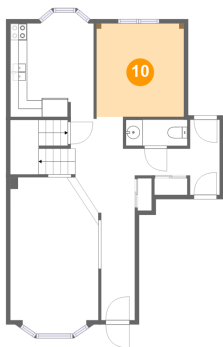
9 Floor 2 - Hall



Max Dimensions: 13'6" x 7'1"  
Calculated Area: 113 sq. ft  
Included: Yes

Heated: Yes  
Finished: Yes  
Enclosed: Yes  
Contiguous: Yes  
Permitted: Yes  
Wet space: No  
Addition: No  
Conversion: No

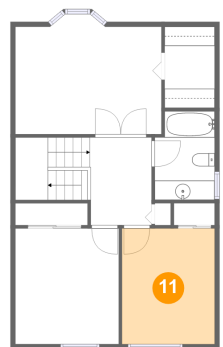
10 Floor 2 - Dining Room



Max Dimensions: 10'4" x 11'0"  
Calculated Area: 114 sq. ft  
Included: Yes

Heated: Yes  
Finished: Yes  
Enclosed: Yes  
Contiguous: Yes  
Permitted: Yes  
Wet space: No  
Addition: No  
Conversion: No

11 Floor 3 - Bedroom

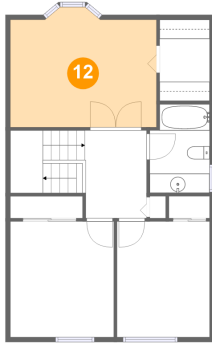


Max Dimensions: 9'7" x 11'11"  
Calculated Area: 114 sq. ft  
Included: Yes

Heated: Yes  
Finished: Yes  
Enclosed: Yes  
Contiguous: Yes  
Permitted: Yes  
Wet space: No  
Addition: No  
Conversion: No

1080 St. Lucia Place, Orléans North West, Orléans, Ontario,  
Canada, K1C 2G3

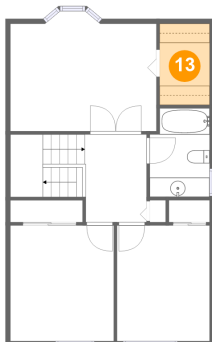
## 12 Floor 3 - Primary Bedroom



Max Dimensions: 15'1" x 12'4"  
Calculated Area: 172 sq. ft  
Included: Yes

Heated: Yes  
Finished: Yes  
Enclosed: Yes  
Contiguous: Yes  
Permitted: Yes  
Wet space: No  
Addition: No  
Conversion: No

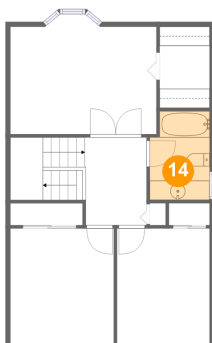
## 13 Floor 3 - W.I.C.



Max Dimensions: 5'2" x 8'4"  
Calculated Area: 43 sq. ft  
Included: Yes

Heated: Yes  
Finished: Yes  
Enclosed: Yes  
Contiguous: Yes  
Permitted: Yes  
Wet space: No  
Addition: No  
Conversion: No

## 14 Floor 3 - Bath

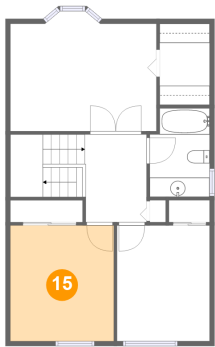


Max Dimensions: 6'2" x 9'2"  
Calculated Area: 54 sq. ft  
Included: Yes

Heated: Yes  
Finished: Yes  
Enclosed: Yes  
Contiguous: Yes  
Permitted: Yes  
Wet space: Yes  
Addition: No  
Conversion: No

1080 St. Lucia Place, Orléans North West, Orléans, Ontario,  
Canada, K1C 2G3

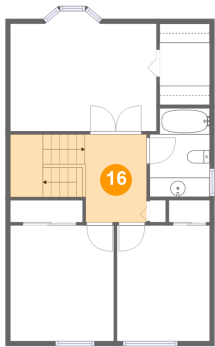
**15** Floor 3 - Bedroom



Max Dimensions: 10'8" x 11'11"  
Calculated Area: 127 sq. ft  
Included: Yes

Heated: Yes  
Finished: Yes  
Enclosed: Yes  
Contiguous: Yes  
Permitted: Yes  
Wet space: No  
Addition: No  
Conversion: No

**16** Floor 3 - Hall



Max Dimensions: 6'4" x 9'0"  
Calculated Area: 107 sq. ft  
Included: Yes

Heated: Yes  
Finished: Yes  
Enclosed: Yes  
Contiguous: Yes  
Permitted: Yes  
Wet space: No  
Addition: No  
Conversion: No