

Home report

2940 Watercrest Road, Forest Grove, Washington County,
Oregon, United States, 97116

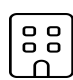


Total Area: 2158 sq. ft

Floor 1: 1047 sq. ft, Floor 2: 1111 sq. ft

Excluded: Room 70 sq. ft, Undefined 18 sq. ft, Fireplace 28 sq. ft, Garage 453 sq. ft, Deck 233 sq. ft, Walls: 173 sq. ft

Property summary

 **2** Floors

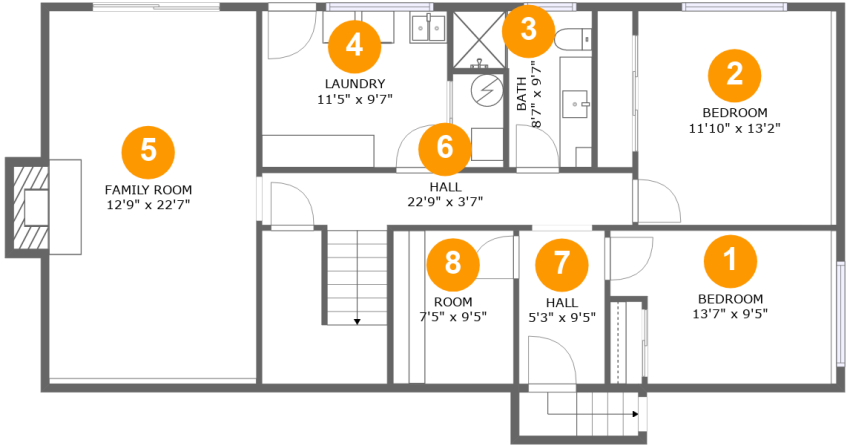
 **4** Bedrooms

 **3** Bathrooms

 **1** Garages

Home report

2940 Watercrest Road, Forest Grove, Washington County,
Oregon, United States, 97116



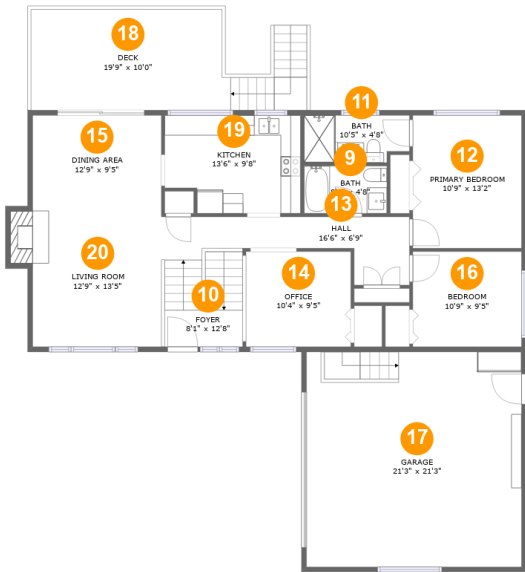
Room dimensions

Floor 1 Total:1047sqft Excluded: 102sqft

#		Max Dimensions	sqft	Included
1	Bedroom	13'7" x 9'5"	119 sq. ft	Yes
2	Bedroom	11'10" x 13'2"	160 sq. ft	Yes
3	Bath	8'7" x 9'7"	61 sq. ft	Yes
4	Laundry	11'5" x 9'7"	109 sq. ft	Yes
5	Family Room	12'9" x 22'7"	303 sq. ft	Yes
6	Hall	22'9" x 3'7"	145 sq. ft	Yes
7	Hall	5'3" x 9'5"	50 sq. ft	Yes
8	Room	7'5" x 9'5"	70 sq. ft	No

Home report

2940 Watercrest Road, Forest Grove, Washington County,
Oregon, United States, 97116



Room dimensions

Floor 2 Total:1111sqft Excluded: 700sqft

#		Max Dimensions	sqft	Included
9	Bath	8'2" x 4'8"	38 sq. ft	Yes
10	Foyer	8'1" x 12'8"	104 sq. ft	Yes
11	Bath	10'5" x 4'8"	46 sq. ft	Yes
12	Primary Bedroom	10'9" x 13'2"	142 sq. ft	Yes
13	Hall	16'6" x 6'9"	71 sq. ft	Yes
14	Office	10'4" x 9'5"	100 sq. ft	Yes
15	Dining Area	12'9" x 9'5"	120 sq. ft	Yes
16	Bedroom	10'9" x 9'5"	101 sq. ft	Yes
17	Garage	21'3" x 21'3"	453 sq. ft	No
18	Deck	19'9" x 10'0"	233 sq. ft	No
19	Kitchen	13'6" x 9'8"	123 sq. ft	Yes

Home report

2940 Watercrest Road, Forest Grove, Washington County,
Oregon, United States, 97116

#		Max Dimensions	sqft	Included
20	Living Room	12'9" x 13'5"	183 sq. ft	Yes

2940 Watercrest Road, Forest Grove, Washington County,
Oregon, United States, 97116

1 Floor 1 - Bedroom



Max Dimensions: 13'7" x 9'5"
Calculated Area: 119 sq. ft
Included: Yes

Heated: Yes
Finished: Yes
Enclosed: Yes
Contiguous: Yes
Permitted: Yes
Wet space: No
Addition: No
Conversion: No

2 Floor 1 - Bedroom



Max Dimensions: 11'10" x 13'2"
Calculated Area: 160 sq. ft
Included: Yes

Heated: Yes
Finished: Yes
Enclosed: Yes
Contiguous: Yes
Permitted: Yes
Wet space: No
Addition: No
Conversion: No

2940 Watercrest Road, Forest Grove, Washington County,
Oregon, United States, 97116

3 Floor 1 - Bath



Max Dimensions: 8'7" x 9'7"
Calculated Area: 61 sq. ft
Included: Yes

Heated: Yes
Finished: Yes
Enclosed: Yes
Contiguous: Yes
Permitted: Yes
Wet space: Yes
Addition: No
Conversion: No

4 Floor 1 - Laundry



Max Dimensions: 11'5" x 9'7"
Calculated Area: 109 sq. ft
Included: Yes

Heated: Yes
Finished: Yes
Enclosed: Yes
Contiguous: Yes
Permitted: Yes
Wet space: No
Addition: No
Conversion: No

5 Floor 1 - Family Room

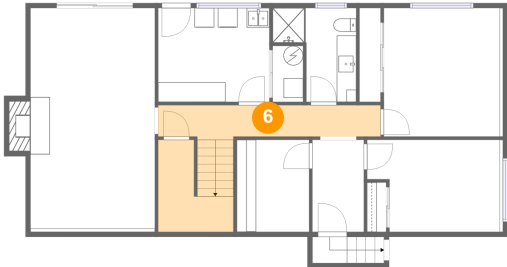


Max Dimensions: 12'9" x 22'7"
Calculated Area: 303 sq. ft
Included: Yes

Heated: Yes
Finished: Yes
Enclosed: Yes
Contiguous: Yes
Permitted: Yes
Wet space: No
Addition: No
Conversion: No

2940 Watercrest Road, Forest Grove, Washington County,
Oregon, United States, 97116

6 Floor 1 - Hall



Max Dimensions: 22'9" x 3'7"
Calculated Area: 145 sq. ft
Included: Yes

Heated: Yes
Finished: Yes
Enclosed: Yes
Contiguous: Yes
Permitted: Yes
Wet space: No
Addition: No
Conversion: No

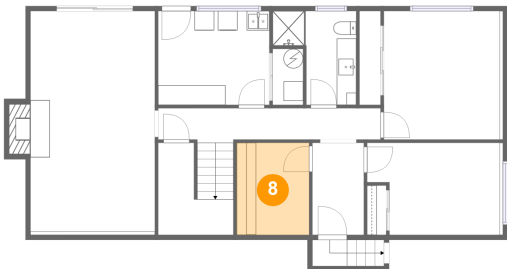
7 Floor 1 - Hall



Max Dimensions: 5'3" x 9'5"
Calculated Area: 50 sq. ft
Included: Yes

Heated: Yes
Finished: Yes
Enclosed: Yes
Contiguous: Yes
Permitted: Yes
Wet space: No
Addition: No
Conversion: No

8 Floor 1 - Room



Max Dimensions: 7'5" x 9'5"
Calculated Area: 70 sq. ft
Included: No

Heated: Yes
Finished: No
Enclosed: Yes
Contiguous: Yes
Permitted: Yes
Wet space: No
Addition: No
Conversion: No

2940 Watercrest Road, Forest Grove, Washington County,
Oregon, United States, 97116

9 Floor 2 - Bath



Max Dimensions: 8'2" x 4'8"
Calculated Area: 38 sq. ft
Included: Yes

Heated: Yes
Finished: Yes
Enclosed: Yes
Contiguous: Yes
Permitted: Yes
Wet space: Yes
Addition: No
Conversion: No

10 Floor 2 - Foyer



Max Dimensions: 8'1" x 12'8"
Calculated Area: 104 sq. ft
Included: Yes

Heated: Yes
Finished: Yes
Enclosed: Yes
Contiguous: Yes
Permitted: Yes
Wet space: No
Addition: No
Conversion: No

11 Floor 2 - Bath



Max Dimensions: 10'5" x 4'8"
Calculated Area: 46 sq. ft
Included: Yes

Heated: Yes
Finished: Yes
Enclosed: Yes
Contiguous: Yes
Permitted: Yes
Wet space: Yes
Addition: No
Conversion: No

2940 Watercrest Road, Forest Grove, Washington County,
Oregon, United States, 97116

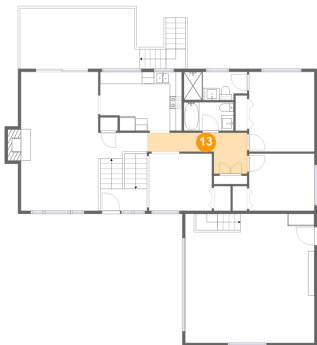
12 Floor 2 - Primary Bedroom



Max Dimensions: 10'9" x 13'2"
Calculated Area: 142 sq. ft
Included: Yes

Heated: Yes
Finished: Yes
Enclosed: Yes
Contiguous: Yes
Permitted: Yes
Wet space: No
Addition: No
Conversion: No

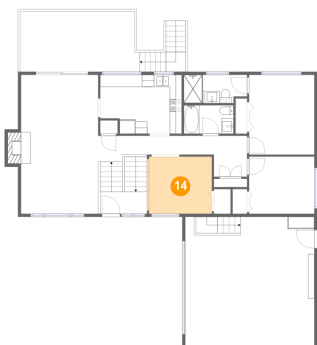
13 Floor 2 - Hall



Max Dimensions: 16'6" x 6'9"
Calculated Area: 71 sq. ft
Included: Yes

Heated: Yes
Finished: Yes
Enclosed: Yes
Contiguous: Yes
Permitted: Yes
Wet space: No
Addition: No
Conversion: No

14 Floor 2 - Office



Max Dimensions: 10'4" x 9'5"
Calculated Area: 100 sq. ft
Included: Yes

Heated: Yes
Finished: Yes
Enclosed: Yes
Contiguous: Yes
Permitted: Yes
Wet space: No
Addition: No
Conversion: No

2940 Watercrest Road, Forest Grove, Washington County,
Oregon, United States, 97116

15 Floor 2 - Dining Area



Max Dimensions: 12'9" x 9'5"
Calculated Area: 120 sq. ft
Included: Yes

Heated: Yes
Finished: Yes
Enclosed: Yes
Contiguous: Yes
Permitted: Yes
Wet space: No
Addition: No
Conversion: No

16 Floor 2 - Bedroom



Max Dimensions: 10'9" x 9'5"
Calculated Area: 101 sq. ft
Included: Yes

Heated: Yes
Finished: Yes
Enclosed: Yes
Contiguous: Yes
Permitted: Yes
Wet space: No
Addition: No
Conversion: No

17 Floor 2 - Garage



Max Dimensions: 21'3" x 21'3"
Calculated Area: 453 sq. ft
Included: No

Heated: No
Finished: No
Enclosed: Yes
Contiguous: Yes
Permitted: Yes
Wet space: No
Addition: No
Conversion: No

2940 Watercrest Road, Forest Grove, Washington County,
Oregon, United States, 97116

18 Floor 2 - Deck



Max Dimensions: 19'9" x 10'0"
Calculated Area: 233 sq. ft
Included: No

Heated: No
Finished: Yes
Enclosed: No
Contiguous: Yes
Permitted: Yes
Wet space: No
Addition: No
Conversion: No

19 Floor 2 - Kitchen



Max Dimensions: 13'6" x 9'8"
Calculated Area: 123 sq. ft
Included: Yes

Heated: Yes
Finished: Yes
Enclosed: Yes
Contiguous: Yes
Permitted: Yes
Wet space: No
Addition: No
Conversion: No

20 Floor 2 - Living Room



Max Dimensions: 12'9" x 13'5"
Calculated Area: 183 sq. ft
Included: Yes

Heated: Yes
Finished: Yes
Enclosed: Yes
Contiguous: Yes
Permitted: Yes
Wet space: No
Addition: No
Conversion: No