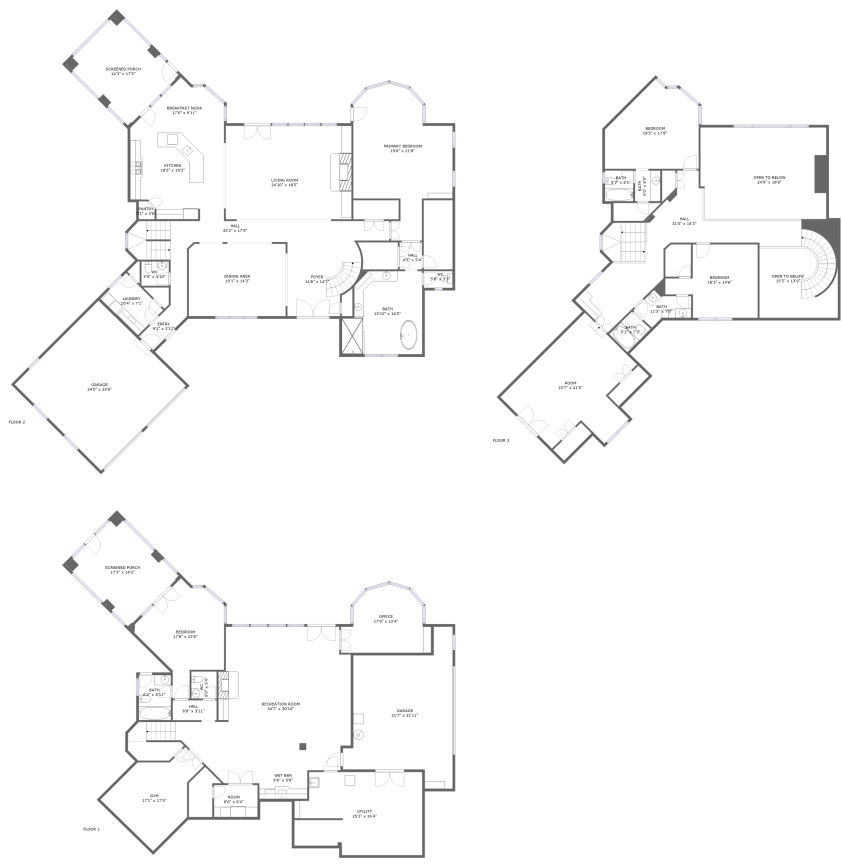


Home report

12955 Saint Andrew Drive, Athens, Limestone County, Alabama,
United States, 35611



Total Area: 6241 sq. ft

Floor 1: 1812 sq. ft, Floor 2: 2738 sq. ft, Floor 3: 1691 sq. ft

Excluded: Utility 379 sq. ft, Garage 1057 sq. ft, Screened porch 494 sq. ft, Open to below 609 sq. ft, Walls: 516 sq. ft

Property summary

**3**
Floors

**4**
Bedrooms

**4**
Bathrooms

Home report

12955 Saint Andrew Drive, Athens, Limestone County, Alabama,
United States, 35611

 **2**
Half baths

 **2**
Garages

Home report

12955 Saint Andrew Drive, Athens, Limestone County, Alabama,
United States, 35611



Room dimensions

Floor 1 Total:1812sqft Excluded: 1117sqft

#		Max Dimensions	sqft	Included
1	Recreation Room	34'7" x 30'10"	813 sq. ft	Yes
2	Garage	21'7" x 31'11"	491 sq. ft	No
3	Office	17'9" x 12'4"	186 sq. ft	Yes
4	Wet Bar	9'6" x 5'8"	54 sq. ft	Yes
5	Hall	8'8" x 3'11"	34 sq. ft	Yes
6	Room	8'6" x 6'4"	54 sq. ft	Yes
7	Bedroom	17'8" x 23'8"	249 sq. ft	Yes
8	Screened Porch	17'3" x 14'2"	247 sq. ft	No
9	Gym	17'1" x 17'5"	214 sq. ft	Yes
10	Utility	25'2" x 16'4"	379 sq. ft	No
11	WC	5'0" x 5'4"	27 sq. ft	Yes

Home report

12955 Saint Andrew Drive, Athens, Limestone County, Alabama,
United States, 35611

#		Max Dimensions	sqft	Included
12	Bath	6'4" x 8'11"	57 sq. ft	Yes

Home report

12955 Saint Andrew Drive, Athens, Limestone County, Alabama,
United States, 35611



Room dimensions

Floor 2 Total:2738sqft Excluded: 813sqft

#		Max Dimensions	sqft	Included
13	Pantry	3'1" x 3'6"	10 sq. ft	Yes
14	Bath	15'10" x 16'5"	235 sq. ft	Yes
15	Screened Porch	14'3" x 17'5"	247 sq. ft	No
16	Garage	24'0" x 23'6"	566 sq. ft	No
17	Primary Bedroom	19'6" x 21'8"	418 sq. ft	Yes
18	WC	5'8" x 3'3"	19 sq. ft	Yes
19	Dining Area	19'1" x 14'3"	272 sq. ft	Yes
20	Hall	4'5" x 5'4"	24 sq. ft	Yes
21	Laundry	10'4" x 7'1"	74 sq. ft	Yes
22	Foyer	14'6" x 14'7"	186 sq. ft	Yes
23	WC	5'5" x 4'10"	26 sq. ft	Yes

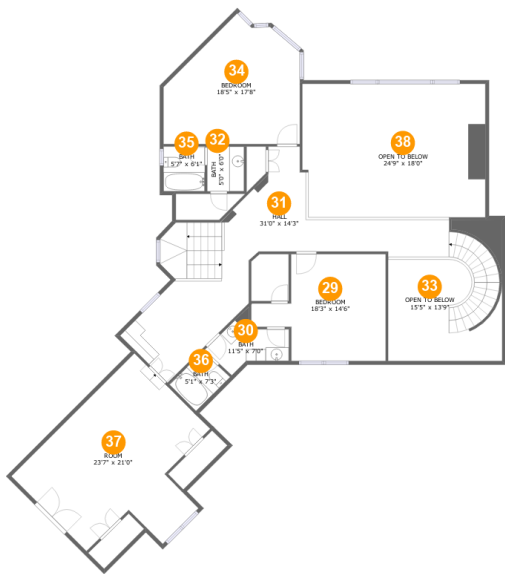
Home report

**12955 Saint Andrew Drive, Athens, Limestone County, Alabama,
United States, 35611**

#		Max Dimensions	sqft	Included
24	Kitchen	18'5" x 18'3"	315 sq. ft	Yes
25	Living Room	24'10" x 18'5"	457 sq. ft	Yes
26	Hall	43'2" x 17'9"	282 sq. ft	Yes
27	Entry	9'1" x 3'11"	35 sq. ft	Yes
28	Breakfast Nook	17'6" x 9'11"	114 sq. ft	Yes

Home report

12955 Saint Andrew Drive, Athens, Limestone County, Alabama,
United States, 35611

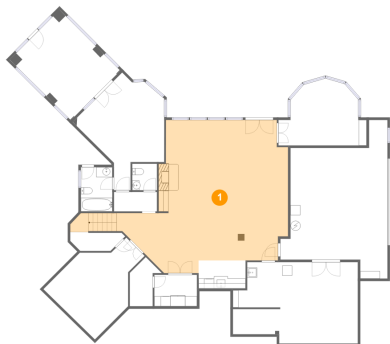


Room dimensions

Floor 3 Total:1691sqft Excluded: 609sqft

#		Max Dimensions	sqft	Included
29	Bedroom	18'3" x 14'6"	203 sq. ft	Yes
30	Bath	11'5" x 7'0"	52 sq. ft	Yes
31	Hall	31'0" x 14'3"	486 sq. ft	Yes
32	Bath	5'0" x 6'0"	30 sq. ft	Yes
33	Open To Below	15'5" x 13'9"	165 sq. ft	No
34	Bedroom	18'5" x 17'8"	257 sq. ft	Yes
35	Bath	5'7" x 6'1"	34 sq. ft	Yes
36	Bath	5'1" x 7'3"	33 sq. ft	Yes
37	Room	23'7" x 21'0"	385 sq. ft	Yes
38	Open To Below	24'9" x 18'0"	443 sq. ft	No

1 Floor 1 - Recreation Room



Max Dimensions: 34'7" x 30'10"
Calculated Area: 813 sq. ft
Included: Yes

Heated: Yes
Finished: Yes
Enclosed: Yes
Contiguous: Yes
Permitted: Yes
Wet space: No
Addition: No
Conversion: No

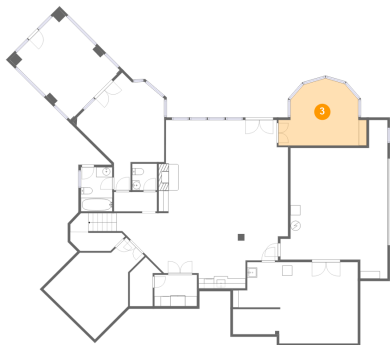
2 Floor 1 - Garage



Max Dimensions: 21'7" x 31'11"
Calculated Area: 491 sq. ft
Included: No

Heated: No
Finished: No
Enclosed: Yes
Contiguous: Yes
Permitted: Yes
Wet space: No
Addition: No
Conversion: No

3 Floor 1 - Office



Max Dimensions: 17'9" x 12'4"
Calculated Area: 186 sq. ft
Included: Yes

Heated: Yes
Finished: Yes
Enclosed: Yes
Contiguous: Yes
Permitted: Yes
Wet space: No
Addition: No
Conversion: No

4 Floor 1 - Wet Bar



Max Dimensions: 9'6" x 5'8"
Calculated Area: 54 sq. ft
Included: Yes

Heated: Yes
Finished: Yes
Enclosed: Yes
Contiguous: Yes
Permitted: Yes
Wet space: No
Addition: No
Conversion: No

5 Floor 1 - Hall



Max Dimensions: 8'8" x 3'11"
Calculated Area: 34 sq. ft
Included: Yes

Heated: Yes
Finished: Yes
Enclosed: Yes
Contiguous: Yes
Permitted: Yes
Wet space: No
Addition: No
Conversion: No

6 Floor 1 - Room



Max Dimensions: 8'6" x 6'4"
Calculated Area: 54 sq. ft
Included: Yes

Heated: Yes
Finished: Yes
Enclosed: Yes
Contiguous: Yes
Permitted: Yes
Wet space: No
Addition: No
Conversion: No

7 Floor 1 - Bedroom



Max Dimensions: 17'8" x 23'8"
Calculated Area: 249 sq. ft
Included: Yes

Heated: Yes
Finished: Yes
Enclosed: Yes
Contiguous: Yes
Permitted: Yes
Wet space: No
Addition: No
Conversion: No

8 Floor 1 - Screened Porch



Max Dimensions: 17'3" x 14'2"
Calculated Area: 247 sq. ft
Included: No

Heated: No
Finished: Yes
Enclosed: No
Contiguous: Yes
Permitted: Yes
Wet space: No
Addition: No
Conversion: No

9 Floor 1 - Gym



Max Dimensions: 17'1" x 17'5"
Calculated Area: 214 sq. ft
Included: Yes

Heated: Yes
Finished: Yes
Enclosed: Yes
Contiguous: Yes
Permitted: Yes
Wet space: No
Addition: No
Conversion: No

10 Floor 1 - Utility



Max Dimensions: 25'2" x 16'4"
Calculated Area: 379 sq. ft
Included: No

Heated: Yes
Finished: No
Enclosed: Yes
Contiguous: Yes
Permitted: Yes
Wet space: No
Addition: No
Conversion: No

11 Floor 1 - WC



Max Dimensions: 5'0" x 5'4"
Calculated Area: 27 sq. ft
Included: Yes

Heated: Yes
Finished: Yes
Enclosed: Yes
Contiguous: Yes
Permitted: Yes
Wet space: Yes
Addition: No
Conversion: No

12955 Saint Andrew Drive, Athens, Limestone County, Alabama,
United States, 35611

12 Floor 1 - Bath



Max Dimensions: 6'4" x 8'11"
Calculated Area: 57 sq. ft
Included: Yes

Heated: Yes
Finished: Yes
Enclosed: Yes
Contiguous: Yes
Permitted: Yes
Wet space: Yes
Addition: No
Conversion: No

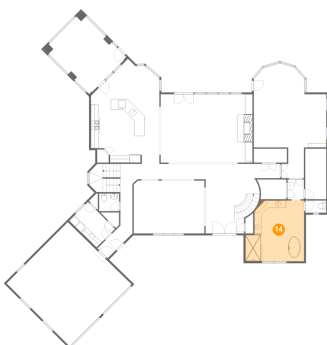
13 Floor 2 - Pantry



Max Dimensions: 3'1" x 3'6"
Calculated Area: 10 sq. ft
Included: Yes

Heated: Yes
Finished: Yes
Enclosed: Yes
Contiguous: Yes
Permitted: Yes
Wet space: No
Addition: No
Conversion: No

14 Floor 2 - Bath



Max Dimensions: 15'10" x 16'5"
Calculated Area: 235 sq. ft
Included: Yes

Heated: Yes
Finished: Yes
Enclosed: Yes
Contiguous: Yes
Permitted: Yes
Wet space: Yes
Addition: No
Conversion: No

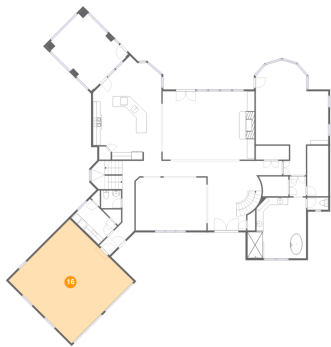
15 Floor 2 - Screened Porch



Max Dimensions: 14'3" x 17'5"
Calculated Area: 247 sq. ft
Included: No

Heated: No
Finished: Yes
Enclosed: No
Contiguous: Yes
Permitted: Yes
Wet space: No
Addition: No
Conversion: No

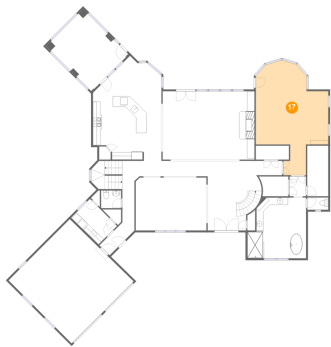
16 Floor 2 - Garage



Max Dimensions: 24'0" x 23'6"
Calculated Area: 566 sq. ft
Included: No

Heated: No
Finished: No
Enclosed: Yes
Contiguous: Yes
Permitted: Yes
Wet space: No
Addition: No
Conversion: No

17 Floor 2 - Primary Bedroom

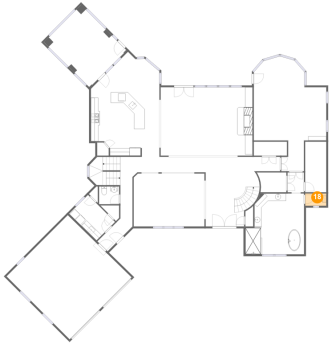


Max Dimensions: 19'6" x 21'8"
Calculated Area: 418 sq. ft
Included: Yes

Heated: Yes
Finished: Yes
Enclosed: Yes
Contiguous: Yes
Permitted: Yes
Wet space: No
Addition: No
Conversion: No

12955 Saint Andrew Drive, Athens, Limestone County, Alabama,
United States, 35611

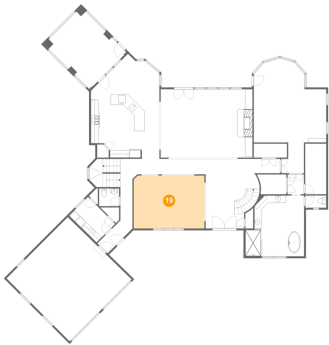
18 Floor 2 - WC



Max Dimensions: 5'8" x 3'3"
Calculated Area: 19 sq. ft
Included: Yes

Heated: Yes
Finished: Yes
Enclosed: Yes
Contiguous: Yes
Permitted: Yes
Wet space: Yes
Addition: No
Conversion: No

19 Floor 2 - Dining Area



Max Dimensions: 19'1" x 14'3"
Calculated Area: 272 sq. ft
Included: Yes

Heated: Yes
Finished: Yes
Enclosed: Yes
Contiguous: Yes
Permitted: Yes
Wet space: No
Addition: No
Conversion: No

20 Floor 2 - Hall



Max Dimensions: 4'5" x 5'4"
Calculated Area: 24 sq. ft
Included: Yes

Heated: Yes
Finished: Yes
Enclosed: Yes
Contiguous: Yes
Permitted: Yes
Wet space: No
Addition: No
Conversion: No

12955 Saint Andrew Drive, Athens, Limestone County, Alabama,
United States, 35611

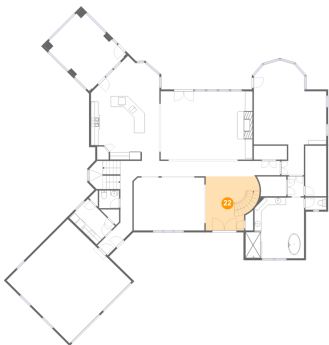
21 Floor 2 - Laundry



Max Dimensions: 10'4" x 7'1"
Calculated Area: 74 sq. ft
Included: Yes

Heated: Yes
Finished: Yes
Enclosed: Yes
Contiguous: Yes
Permitted: Yes
Wet space: No
Addition: No
Conversion: No

22 Floor 2 - Foyer



Max Dimensions: 14'6" x 14'7"
Calculated Area: 186 sq. ft
Included: Yes

Heated: Yes
Finished: Yes
Enclosed: Yes
Contiguous: Yes
Permitted: Yes
Wet space: No
Addition: No
Conversion: No

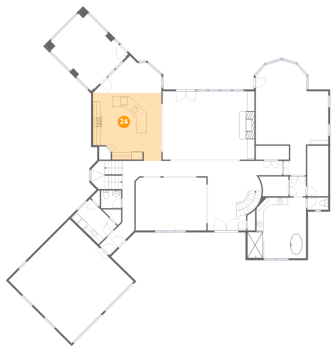
23 Floor 2 - WC



Max Dimensions: 5'5" x 4'10"
Calculated Area: 26 sq. ft
Included: Yes

Heated: Yes
Finished: Yes
Enclosed: Yes
Contiguous: Yes
Permitted: Yes
Wet space: Yes
Addition: No
Conversion: No

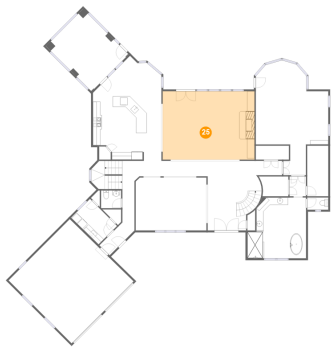
24 Floor 2 - Kitchen



Max Dimensions: 18'5" x 18'3"
Calculated Area: 315 sq. ft
Included: Yes

Heated: Yes
Finished: Yes
Enclosed: Yes
Contiguous: Yes
Permitted: Yes
Wet space: No
Addition: No
Conversion: No

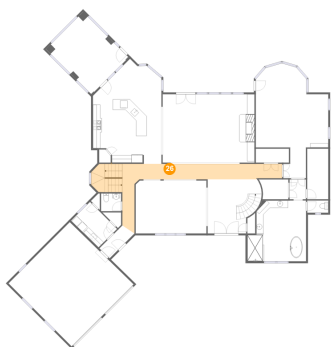
25 Floor 2 - Living Room



Max Dimensions: 24'10" x 18'5"
Calculated Area: 457 sq. ft
Included: Yes

Heated: Yes
Finished: Yes
Enclosed: Yes
Contiguous: Yes
Permitted: Yes
Wet space: No
Addition: No
Conversion: No

26 Floor 2 - Hall



Max Dimensions: 43'2" x 17'9"
Calculated Area: 282 sq. ft
Included: Yes

Heated: Yes
Finished: Yes
Enclosed: Yes
Contiguous: Yes
Permitted: Yes
Wet space: No
Addition: No
Conversion: No

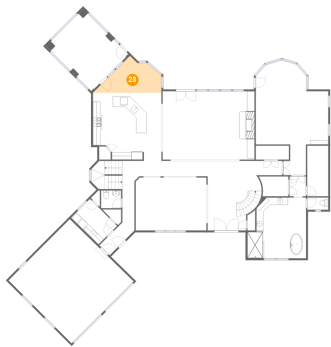
27 Floor 2 - Entry



Max Dimensions: 9'1" x 3'11"
Calculated Area: 35 sq. ft
Included: Yes

Heated: Yes
Finished: Yes
Enclosed: Yes
Contiguous: Yes
Permitted: Yes
Wet space: No
Addition: No
Conversion: No

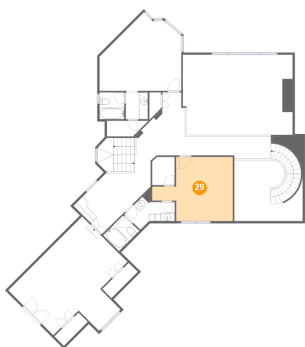
28 Floor 2 - Breakfast Nook



Max Dimensions: 17'6" x 9'11"
Calculated Area: 114 sq. ft
Included: Yes

Heated: Yes
Finished: Yes
Enclosed: Yes
Contiguous: Yes
Permitted: Yes
Wet space: No
Addition: No
Conversion: No

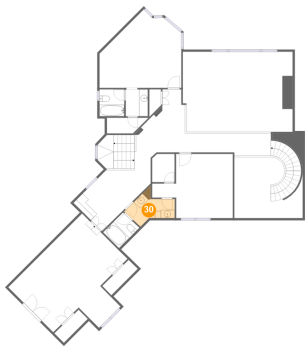
29 Floor 3 - Bedroom



Max Dimensions: 18'3" x 14'6"
Calculated Area: 203 sq. ft
Included: Yes

Heated: Yes
Finished: Yes
Enclosed: Yes
Contiguous: Yes
Permitted: Yes
Wet space: No
Addition: No
Conversion: No

30 Floor 3 - Bath



Max Dimensions: 11'5" x 7'0"
Calculated Area: 52 sq. ft
Included: Yes

Heated: Yes
Finished: Yes
Enclosed: Yes
Contiguous: Yes
Permitted: Yes
Wet space: Yes
Addition: No
Conversion: No

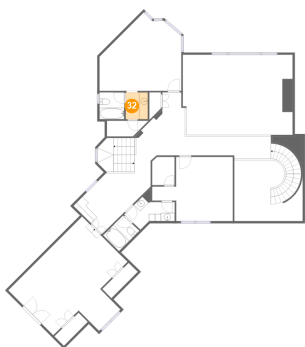
31 Floor 3 - Hall



Max Dimensions: 31'0" x 14'3"
Calculated Area: 486 sq. ft
Included: Yes

Heated: Yes
Finished: Yes
Enclosed: Yes
Contiguous: Yes
Permitted: Yes
Wet space: No
Addition: No
Conversion: No

32 Floor 3 - Bath

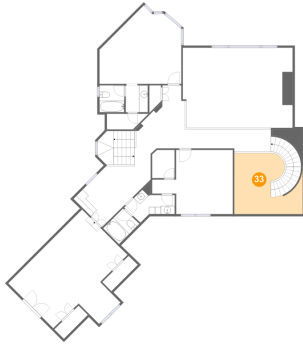


Max Dimensions: 5'0" x 6'0"
Calculated Area: 30 sq. ft
Included: Yes

Heated: Yes
Finished: Yes
Enclosed: Yes
Contiguous: Yes
Permitted: Yes
Wet space: Yes
Addition: No
Conversion: No

12955 Saint Andrew Drive, Athens, Limestone County, Alabama,
United States, 35611

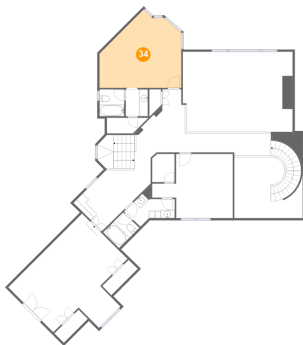
33 Floor 3 - Open To Below



Max Dimensions: 15'5" x 13'9"
Calculated Area: 165 sq. ft
Included: No

Heated: No
Finished: No
Enclosed: No
Contiguous: Yes
Permitted: No
Wet space: No
Addition: No
Conversion: No

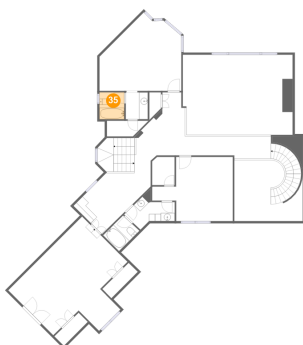
34 Floor 3 - Bedroom



Max Dimensions: 18'5" x 17'8"
Calculated Area: 257 sq. ft
Included: Yes

Heated: Yes
Finished: Yes
Enclosed: Yes
Contiguous: Yes
Permitted: Yes
Wet space: No
Addition: No
Conversion: No

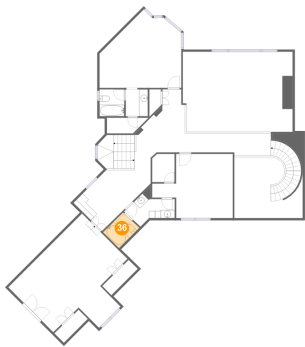
35 Floor 3 - Bath



Max Dimensions: 5'7" x 6'1"
Calculated Area: 34 sq. ft
Included: Yes

Heated: Yes
Finished: Yes
Enclosed: Yes
Contiguous: Yes
Permitted: Yes
Wet space: Yes
Addition: No
Conversion: No

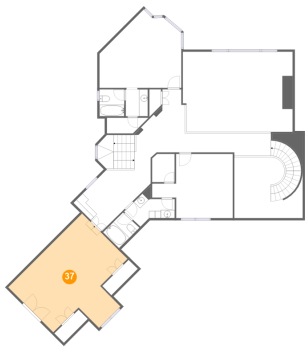
36 Floor 3 - Bath



Max Dimensions: 5'1" x 7'3"
Calculated Area: 33 sq. ft
Included: Yes

Heated: Yes
Finished: Yes
Enclosed: Yes
Contiguous: Yes
Permitted: Yes
Wet space: Yes
Addition: No
Conversion: No

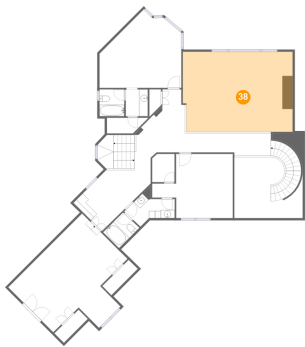
37 Floor 3 - Room



Max Dimensions: 23'7" x 21'0"
Calculated Area: 385 sq. ft
Included: Yes

Heated: Yes
Finished: Yes
Enclosed: Yes
Contiguous: Yes
Permitted: Yes
Wet space: No
Addition: No
Conversion: No

38 Floor 3 - Open To Below



Max Dimensions: 24'9" x 18'0"
Calculated Area: 443 sq. ft
Included: No

Heated: No
Finished: No
Enclosed: No
Contiguous: Yes
Permitted: No
Wet space: No
Addition: No
Conversion: No