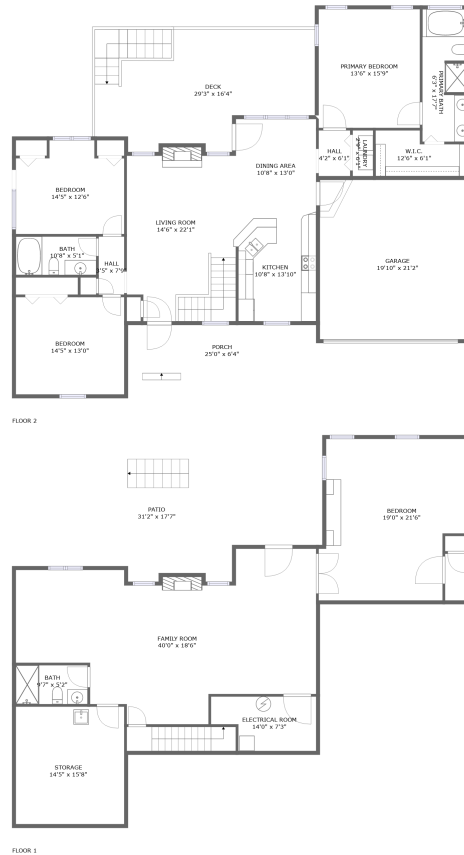






526 Stonebridge Drive, Blue Ridge, Botetourt County, Virginia, United States, 24064



Property Summary

 **1** garages  **4** bedrooms  **3** bathrooms  **0** half baths

 **2** floors  **2,962** Gross Living Area sqft  **4,800** total sqft

526 Stonebridge Drive, Blue Ridge, Botetourt County, Virginia, United States, 24064



Room Dimensions

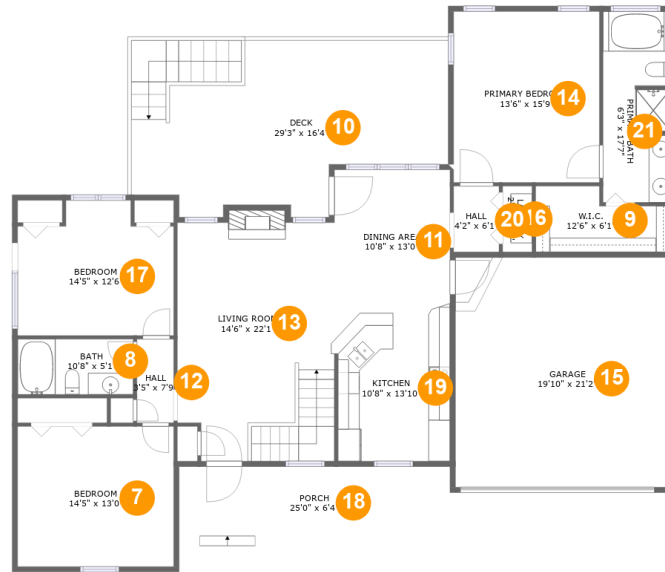
Floor 1

Total sqft: 2118

Living area: 1295

#	Room name	Dimensions	Area (sqft)	Counted as Living Area
1	Storage	14'5" x 15'8"	226 sq. ft	No
2	Bath	9'7" x 5'2"	49 sq. ft	Yes
3	Electrical Room	14'0" x 7'3"	89 sq. ft	No
4	Patio	31'2" x 17'7"	472 sq. ft	No
5	Family Room	40'0" x 18'6"	723 sq. ft	Yes
6	Bedroom	19'0" x 21'6"	385 sq. ft	Yes

526 Stonebridge Drive, Blue Ridge, Botetourt County, Virginia, United States, 24064



Room Dimensions

Floor 2

Total sqft: 2682

Living area: 1667

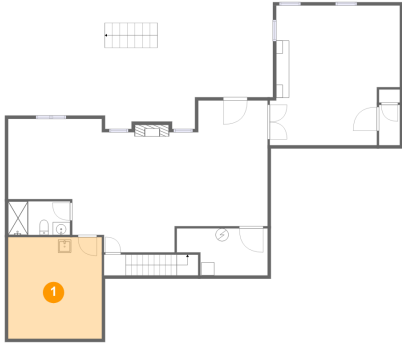
#	Room name	Dimensions	Area (sqft)	Counted as Living Area
7	Bedroom	14'5" x 13'0"	187 sq. ft	Yes
8	Bath	10'8" x 5'1"	55 sq. ft	Yes
9	W.i.c.	12'6" x 6'1"	64 sq. ft	Yes
10	Deck	29'3" x 16'4"	404 sq. ft	No
11	Dining Area	10'8" x 13'0"	140 sq. ft	Yes
12	Hall	3'5" x 7'9"	26 sq. ft	Yes
13	Living Room	14'6" x 22'1"	318 sq. ft	Yes
14	Primary Bedroom	13'6" x 15'9"	213 sq. ft	Yes
15	Garage	19'10" x 21'2"	422 sq. ft	No
16	Laundry	2'9" x 6'1"	17 sq. ft	Yes
17	Bedroom	14'5" x 12'6"	160 sq. ft	Yes

**526 Stonebridge Drive, Blue Ridge, Botetourt
County, Virginia, United States, 24064**

#	Room name	Dimensions	Area (sqft)	Counted as Living Area
18	Porch	25'0" x 6'4"	160 sq. ft	No
19	Kitchen	10'8" x 13'10"	145 sq. ft	Yes
20	Hall	4'2" x 6'1"	26 sq. ft	Yes
21	Primary Bath	6'3" x 17'7"	108 sq. ft	Yes

526 Stonebridge Drive, Blue Ridge, Botetourt County, Virginia, United States, 24064

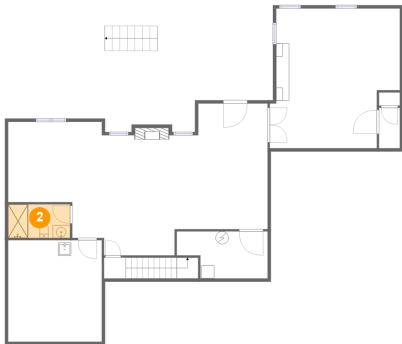
1 Floor 1 - Storage



Dimensions: 14'5" x 15'8"
Area: 226 sq. ft
Counted as Living Area: No

Heated: No
Finished: No
Enclosed: No
Contiguous: Yes
Permitted: Yes
Wet Space: No
Addition: No
Conversion: No

2 Floor 1 - Bath



Dimensions: 9'7" x 5'2"
Area: 49 sq. ft
Counted as Living Area:
Yes

Heated: Yes
Finished: Yes
Enclosed: Yes
Contiguous:
Yes
Permitted: Yes
Wet Space: Yes
Addition: No
Conversion: No

526 Stonebridge Drive, Blue Ridge, Botetourt County, Virginia, United States, 24064

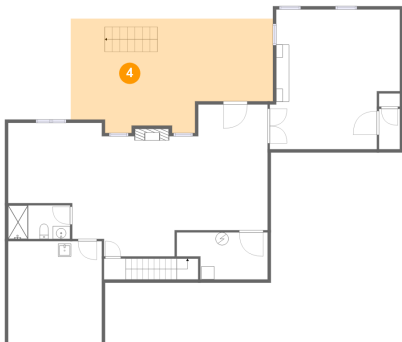
3 Floor 1 - Electrical Room



Dimensions: 14'0" x 7'3"
Area: 89 sq. ft
Counted as Living Area: No

Heated: No
Finished: No
Enclosed: Yes
Contiguous: Yes
Permitted: Yes
Wet Space: No
Addition: No
Conversion: No

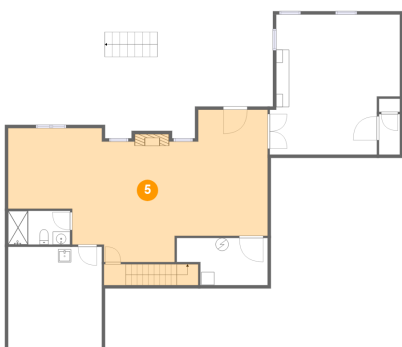
4 Floor 1 - Patio



Dimensions: 31'2" x 17'7"
Area: 472 sq. ft
Counted as Living Area: No

Heated: No
Finished: Yes
Enclosed: No
Contiguous: Yes
Permitted: Yes
Wet Space: No
Addition: No
Conversion: No

5 Floor 1 - Family Room

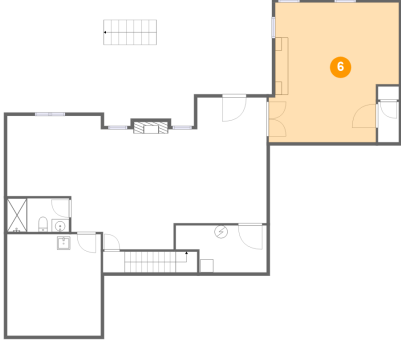


Dimensions: 40'0" x 18'6"
Area: 723 sq. ft
Counted as Living Area: Yes

Heated: Yes
Finished: Yes
Enclosed: Yes
Contiguous: Yes
Permitted: Yes
Wet Space: No
Addition: No
Conversion: No

526 Stonebridge Drive, Blue Ridge, Botetourt County, Virginia, United States, 24064

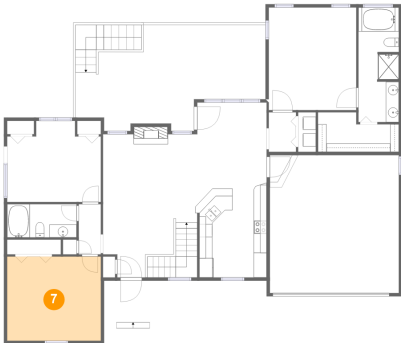
6 Floor 1 - Bedroom



Dimensions: 19'0" x 21'6"
Area: 385 sq. ft
Counted as Living Area:
Yes

Heated: Yes
Finished: Yes
Enclosed: Yes
Contiguous:
Yes
Permitted: Yes
Wet Space: No
Addition: No
Conversion: No

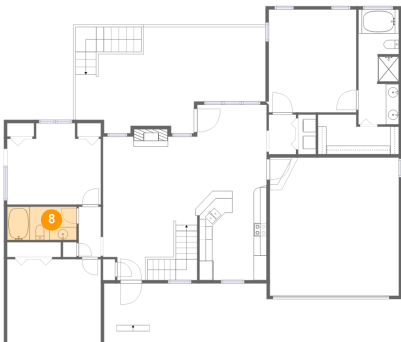
7 Floor 2 - Bedroom



Dimensions: 14'5" x 13'0"
Area: 187 sq. ft
Counted as Living Area:
Yes

Heated: Yes
Finished: Yes
Enclosed: Yes
Contiguous:
Yes
Permitted: Yes
Wet Space: No
Addition: No
Conversion: No

8 Floor 2 - Bath

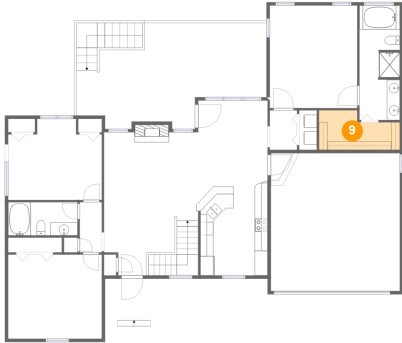


Dimensions: 10'8" x 5'1"
Area: 55 sq. ft
Counted as Living Area:
Yes

Heated: Yes
Finished: Yes
Enclosed: Yes
Contiguous:
Yes
Permitted: Yes
Wet Space: Yes
Addition: No
Conversion: No

526 Stonebridge Drive, Blue Ridge, Botetourt County, Virginia, United States, 24064

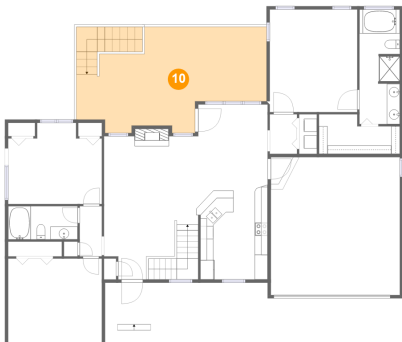
9 Floor 2 - W.i.c.



Dimensions: 12'6" x 6'1"
Area: 64 sq. ft
Counted as Living Area:
Yes

Heated: Yes
Finished: Yes
Enclosed: Yes
Contiguous:
Yes
Permitted: Yes
Wet Space: No
Addition: No
Conversion: No

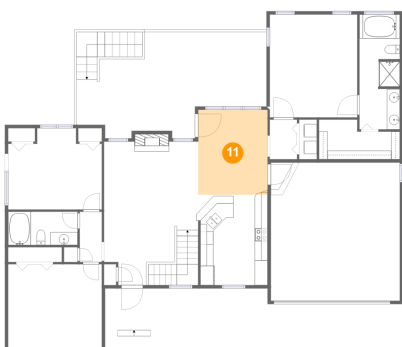
10 Floor 2 - Deck



Dimensions: 29'3" x 16'4"
Area: 404 sq. ft
Counted as Living Area: No

Heated: No
Finished: Yes
Enclosed: No
Contiguous: Yes
Permitted: Yes
Wet Space: No
Addition: No
Conversion: No

11 Floor 2 - Dining Area



Dimensions: 10'8" x 13'0"
Area: 140 sq. ft
Counted as Living Area:
Yes

Heated: Yes
Finished: Yes
Enclosed: Yes
Contiguous:
Yes
Permitted: Yes
Wet Space: No
Addition: No
Conversion: No

526 Stonebridge Drive, Blue Ridge, Botetourt County, Virginia, United States, 24064

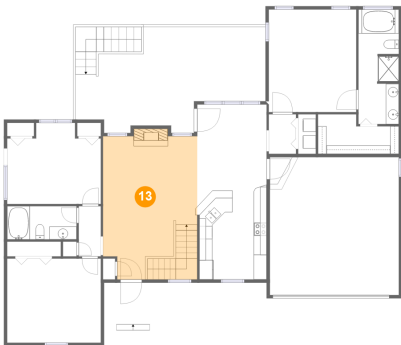
12 Floor 2 - Hall



Dimensions: 3'5" x 7'9"
Area: 26 sq. ft
Counted as Living Area:
Yes

Heated: Yes
Finished: Yes
Enclosed: Yes
Contiguous:
Yes
Permitted: Yes
Wet Space: No
Addition: No
Conversion: No

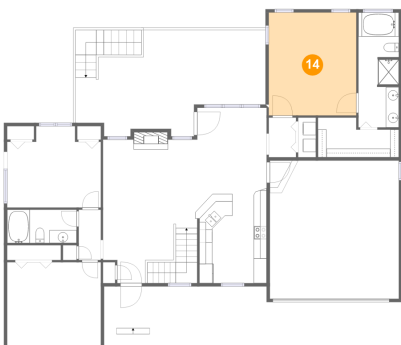
13 Floor 2 - Living Room



Dimensions: 14'6" x 22'1"
Area: 318 sq. ft
Counted as Living Area:
Yes

Heated: Yes
Finished: Yes
Enclosed: Yes
Contiguous:
Yes
Permitted: Yes
Wet Space: No
Addition: No
Conversion: No

14 Floor 2 - Primary Bedroom

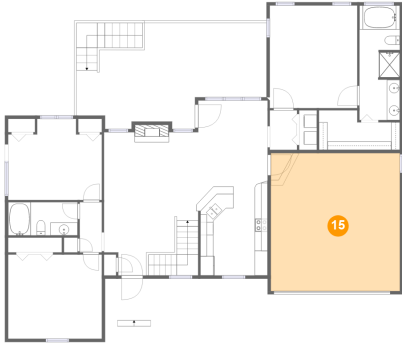


Dimensions: 13'6" x 15'9"
Area: 213 sq. ft
Counted as Living Area:
Yes

Heated: Yes
Finished: Yes
Enclosed: Yes
Contiguous:
Yes
Permitted: Yes
Wet Space: No
Addition: No
Conversion: No

526 Stonebridge Drive, Blue Ridge, Botetourt County, Virginia, United States, 24064

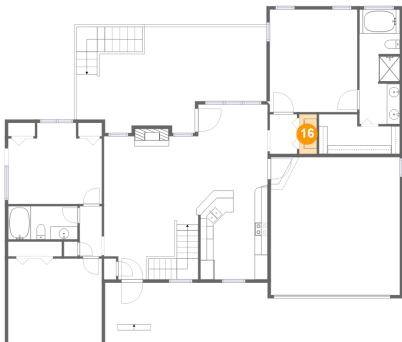
15 Floor 2 - Garage



Dimensions: 19'10" x 21'2"
Area: 422 sq. ft
Counted as Living Area: No

Heated: No
Finished: No
Enclosed: Yes
Contiguous: Yes
Permitted: Yes
Wet Space: No
Addition: No
Conversion: No

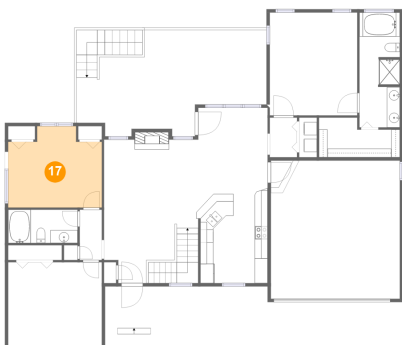
16 Floor 2 - Laundry



Dimensions: 2'9" x 6'1"
Area: 17 sq. ft
Counted as Living Area: Yes

Heated: Yes
Finished: Yes
Enclosed: Yes
Contiguous: Yes
Permitted: Yes
Wet Space: No
Addition: No
Conversion: No

17 Floor 2 - Bedroom

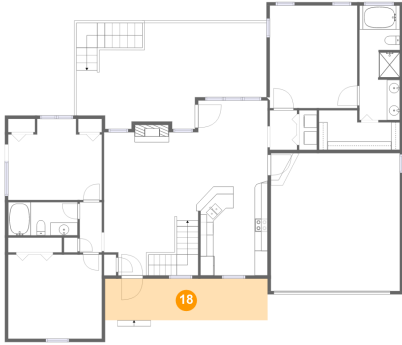


Dimensions: 14'5" x 12'6"
Area: 160 sq. ft
Counted as Living Area: Yes

Heated: Yes
Finished: Yes
Enclosed: Yes
Contiguous: Yes
Permitted: Yes
Wet Space: No
Addition: No
Conversion: No

526 Stonebridge Drive, Blue Ridge, Botetourt County, Virginia, United States, 24064

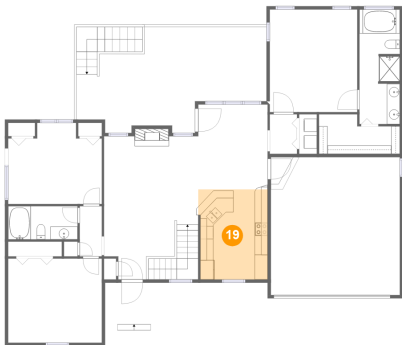
18 Floor 2 - Porch



Dimensions: 25'0" x 6'4"
Area: 160 sq. ft
Counted as Living Area: No

Heated: No
Finished: Yes
Enclosed: No
Contiguous: Yes
Permitted: Yes
Wet Space: No
Addition: No
Conversion: No

19 Floor 2 - Kitchen



Dimensions: 10'8" x 13'10"
Area: 145 sq. ft
Counted as Living Area: Yes

Heated: Yes
Finished: Yes
Enclosed: Yes
Contiguous: Yes
Permitted: Yes
Wet Space: No
Addition: No
Conversion: No

20 Floor 2 - Hall



Dimensions: 4'2" x 6'1"
Area: 26 sq. ft
Counted as Living Area: Yes

Heated: Yes
Finished: Yes
Enclosed: Yes
Contiguous: Yes
Permitted: Yes
Wet Space: No
Addition: No
Conversion: No

526 Stonebridge Drive, Blue Ridge, Botetourt County, Virginia, United States, 24064

21 Floor 2 - Primary Bath



Dimensions: 6'3" x 17'7"
Area: 108 sq. ft
Counted as Living Area:
Yes

Heated: Yes
Finished: Yes
Enclosed: Yes
Contiguous:
Yes
Permitted: Yes
Wet Space: Yes
Addition: No
Conversion: No