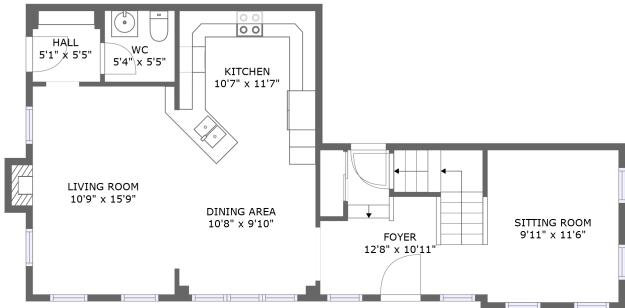
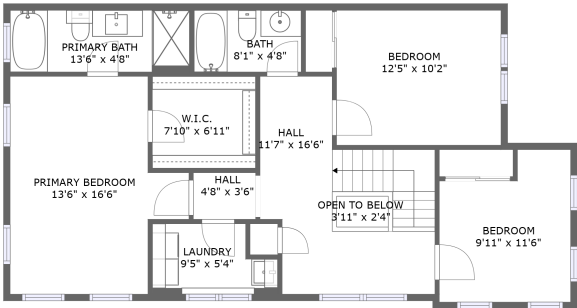


Home report

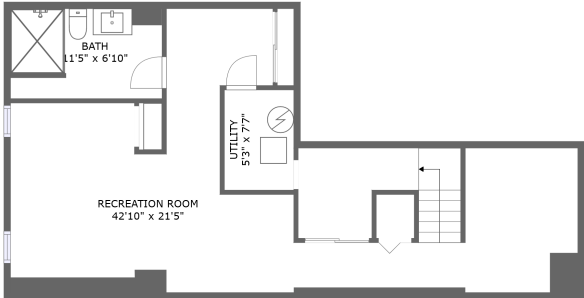
300 Sweetfern Crescent, Navan, Orléans, Ontario, Canada, K4A 1A6



FLOOR 2



FLOOR 3



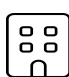
FLOOR 1


Total Area: 2221 sq. ft


Below Ground: 654 sq. ft, Floor 2: 717 sq. ft, Floor 3: 850 sq. ft


Excluded: Utility 40 sq. ft, Fireplace 7 sq. ft, Open to below 9 sq. ft, Walls: 196 sq. ft

Property summary

**3** Floors

**3** Bedrooms

**3** Bathrooms

**1** Half baths

Home report

300 Sweetfern Crescent, Navan, Orléans, Ontario, Canada, K4A 1A6



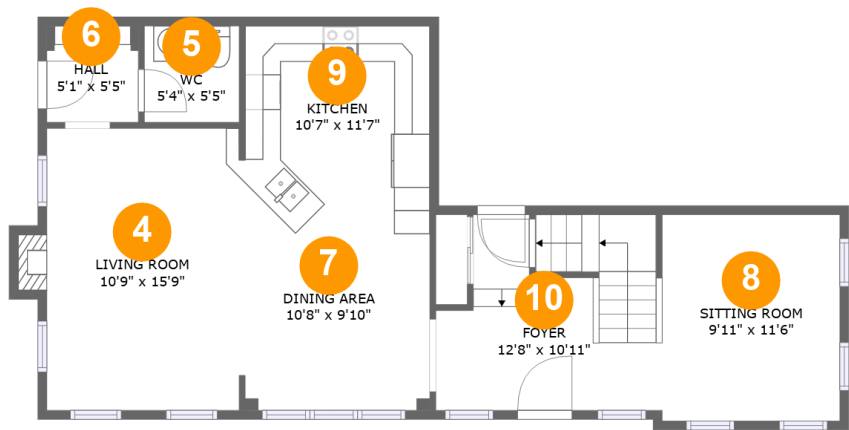
Room dimensions

Floor 1 Below ground Total:654sqft Excluded: 40sqft

#		Max Dimensions	sqft	Included
1	Utility	5'3" x 7'7"	40 sq. ft	No
2	Recreation Room	42'10" x 21'5"	476 sq. ft	Yes
3	Bath	11'5" x 6'10"	76 sq. ft	Yes

Home report

300 Sweetfern Crescent, Navan, Orléans, Ontario, Canada, K4A 1A6



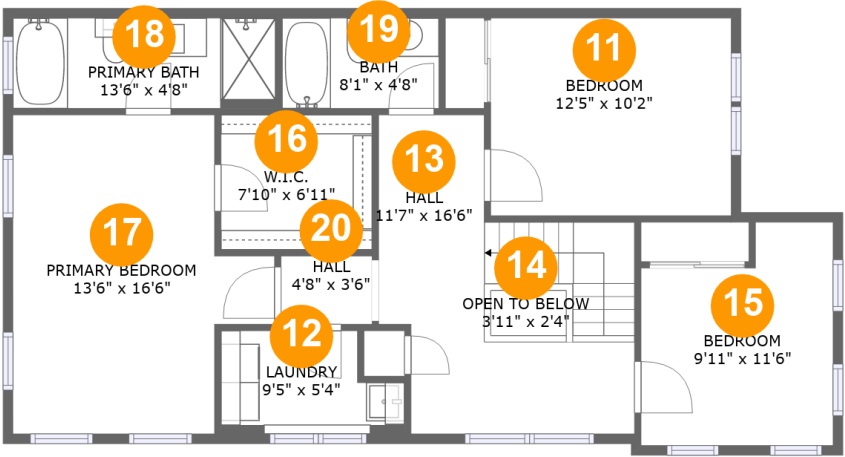
Room dimensions

Floor 2 Total:717sqft Excluded: 7sqft

#		Max Dimensions	sqft	Included
4	Living Room	10'9" x 15'9"	174 sq. ft	Yes
5	WC	5'4" x 5'5"	28 sq. ft	Yes
6	Hall	5'1" x 5'5"	28 sq. ft	Yes
7	Dining Area	10'8" x 9'10"	105 sq. ft	Yes
8	Sitting Room	9'11" x 11'6"	114 sq. ft	Yes
9	Kitchen	10'7" x 11'7"	121 sq. ft	Yes
10	Foyer	12'8" x 10'11"	123 sq. ft	Yes

Home report

300 Sweetfern Crescent, Navan, Orléans, Ontario, Canada, K4A 1A6



Room dimensions

Floor 3 Total:850sqft Excluded: 9sqft

#		Max Dimensions	sqft	Included
11	Bedroom	12'5" x 10'2"	127 sq. ft	Yes
12	Laundry	9'5" x 5'4"	44 sq. ft	Yes
13	Hall	11'7" x 16'6"	165 sq. ft	Yes
14	Open To Below	3'11" x 2'4"	9 sq. ft	No
15	Bedroom	9'11" x 11'6"	100 sq. ft	Yes
16	W.I.C.	7'10" x 6'11"	54 sq. ft	Yes
17	Primary Bedroom	13'6" x 16'6"	182 sq. ft	Yes
18	Primary Bath	13'6" x 4'8"	63 sq. ft	Yes
19	Bath	8'1" x 4'8"	38 sq. ft	Yes
20	Hall	4'8" x 3'6"	17 sq. ft	Yes

1 Floor 1 - Utility



Max Dimensions: 5'3" x 7'7"
Calculated Area: 40 sq. ft
Included: No

Heated: Yes
Finished: No
Enclosed: Yes
Contiguous: Yes
Permitted: Yes
Wet space: No
Addition: No
Conversion: No

2 Floor 1 - Recreation Room



Max Dimensions: 42'10" x 21'5"
Calculated Area: 476 sq. ft
Included: Yes

Heated: Yes
Finished: Yes
Enclosed: Yes
Contiguous: Yes
Permitted: Yes
Wet space: No
Addition: No
Conversion: No

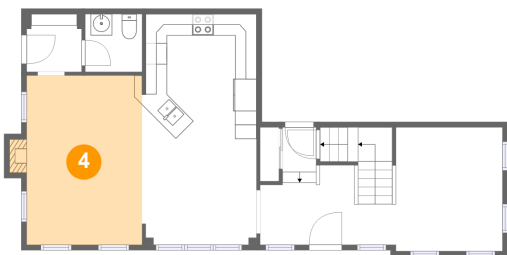
3 Floor 1 - Bath



Max Dimensions: 11'5" x 6'10"
Calculated Area: 76 sq. ft
Included: Yes

Heated: Yes
Finished: Yes
Enclosed: Yes
Contiguous: Yes
Permitted: Yes
Wet space: Yes
Addition: No
Conversion: No

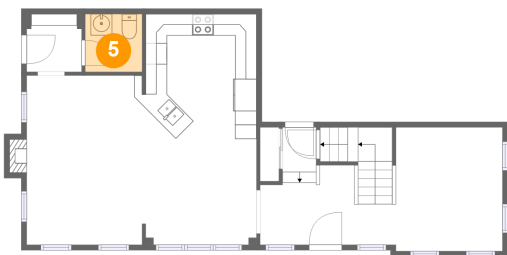
4 Floor 2 - Living Room



Max Dimensions: 10'9" x 15'9"
Calculated Area: 174 sq. ft
Included: Yes

Heated: Yes
Finished: Yes
Enclosed: Yes
Contiguous: Yes
Permitted: Yes
Wet space: No
Addition: No
Conversion: No

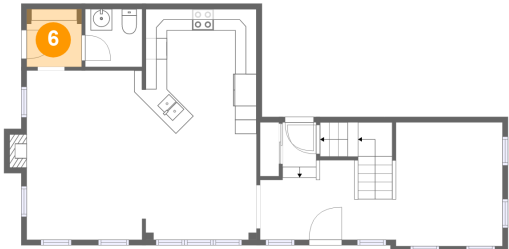
5 Floor 2 - WC



Max Dimensions: 5'4" x 5'5"
Calculated Area: 28 sq. ft
Included: Yes

Heated: Yes
Finished: Yes
Enclosed: Yes
Contiguous: Yes
Permitted: Yes
Wet space: Yes
Addition: No
Conversion: No

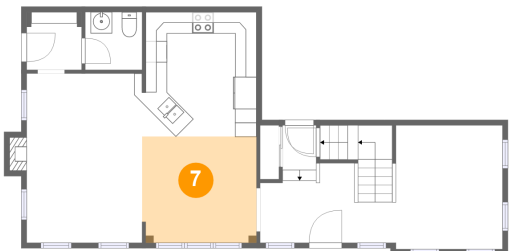
6 Floor 2 - Hall



Max Dimensions: 5'1" x 5'5"
Calculated Area: 28 sq. ft
Included: Yes

Heated: Yes
Finished: Yes
Enclosed: Yes
Contiguous: Yes
Permitted: Yes
Wet space: No
Addition: No
Conversion: No

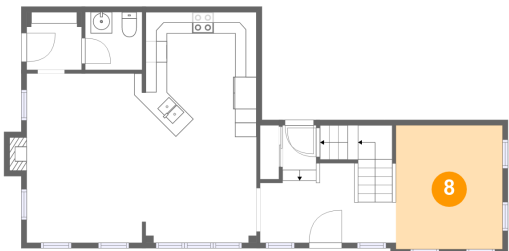
7 Floor 2 - Dining Area



Max Dimensions: 10'8" x 9'10"
Calculated Area: 105 sq. ft
Included: Yes

Heated: Yes
Finished: Yes
Enclosed: Yes
Contiguous: Yes
Permitted: Yes
Wet space: No
Addition: No
Conversion: No

8 Floor 2 - Sitting Room



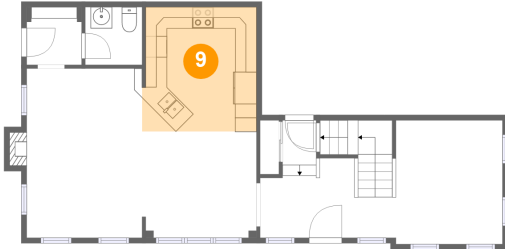
Max Dimensions: 9'11" x 11'6"
Calculated Area: 114 sq. ft
Included: Yes

Heated: Yes
Finished: Yes
Enclosed: Yes
Contiguous: Yes
Permitted: Yes
Wet space: No
Addition: No
Conversion: No

Home report

300 Sweetfern Crescent, Navan, Orléans, Ontario, Canada, K4A 1A6

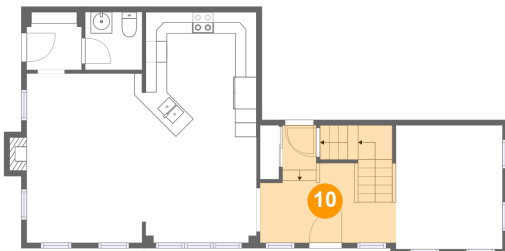
9 Floor 2 - Kitchen



Max Dimensions: 10'7" x 11'7"
Calculated Area: 121 sq. ft
Included: Yes

Heated: Yes
Finished: Yes
Enclosed: Yes
Contiguous: Yes
Permitted: Yes
Wet space: No
Addition: No
Conversion: No

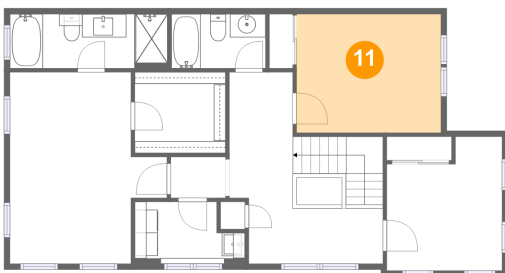
10 Floor 2 - Foyer



Max Dimensions: 12'8" x 10'11"
Calculated Area: 123 sq. ft
Included: Yes

Heated: Yes
Finished: Yes
Enclosed: Yes
Contiguous: Yes
Permitted: Yes
Wet space: No
Addition: No
Conversion: No

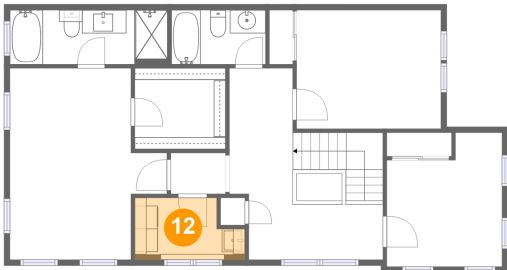
11 Floor 3 - Bedroom



Max Dimensions: 12'5" x 10'2"
Calculated Area: 127 sq. ft
Included: Yes

Heated: Yes
Finished: Yes
Enclosed: Yes
Contiguous: Yes
Permitted: Yes
Wet space: No
Addition: No
Conversion: No

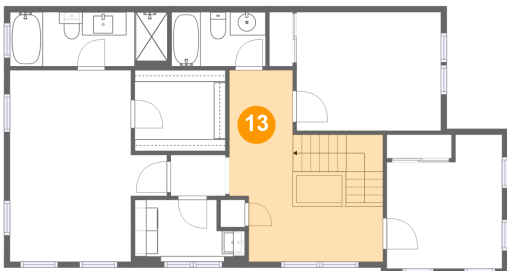
12 Floor 3 - Laundry



Max Dimensions: 9'5" x 5'4"
Calculated Area: 44 sq. ft
Included: Yes

Heated: Yes
Finished: Yes
Enclosed: Yes
Contiguous: Yes
Permitted: Yes
Wet space: No
Addition: No
Conversion: No

13 Floor 3 - Hall



Max Dimensions: 11'7" x 16'6"
Calculated Area: 165 sq. ft
Included: Yes

Heated: Yes
Finished: Yes
Enclosed: Yes
Contiguous: Yes
Permitted: Yes
Wet space: No
Addition: No
Conversion: No

14 Floor 3 - Open To Below



Max Dimensions: 3'11" x 2'4"
Calculated Area: 9 sq. ft
Included: No

Heated: No
Finished: No
Enclosed: No
Contiguous: Yes
Permitted: No
Wet space: No
Addition: No
Conversion: No

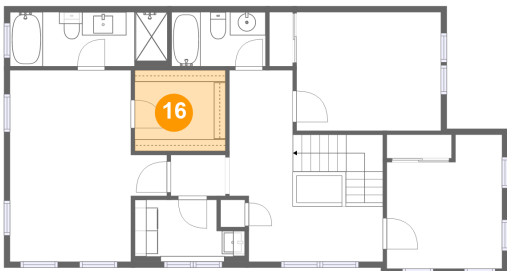
15 Floor 3 - Bedroom



Max Dimensions: 9'11" x 11'6"
Calculated Area: 100 sq. ft
Included: Yes

Heated: Yes
Finished: Yes
Enclosed: Yes
Contiguous: Yes
Permitted: Yes
Wet space: No
Addition: No
Conversion: No

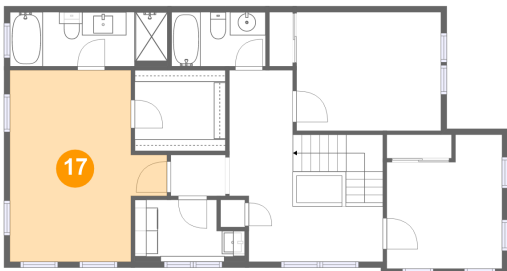
16 Floor 3 - W.I.C.



Max Dimensions: 7'10" x 6'11"
Calculated Area: 54 sq. ft
Included: Yes

Heated: Yes
Finished: Yes
Enclosed: Yes
Contiguous: Yes
Permitted: Yes
Wet space: No
Addition: No
Conversion: No

17 Floor 3 - Primary Bedroom

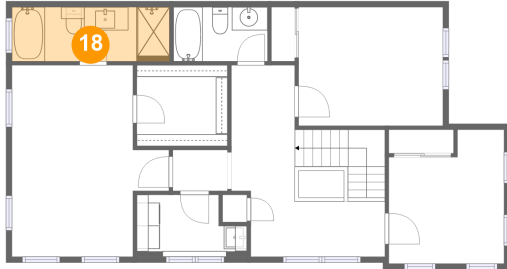


Max Dimensions: 13'6" x 16'6"
Calculated Area: 182 sq. ft
Included: Yes

Heated: Yes
Finished: Yes
Enclosed: Yes
Contiguous: Yes
Permitted: Yes
Wet space: No
Addition: No
Conversion: No

300 Sweetfern Crescent, Navan, Orléans, Ontario, Canada, K4A 1A6

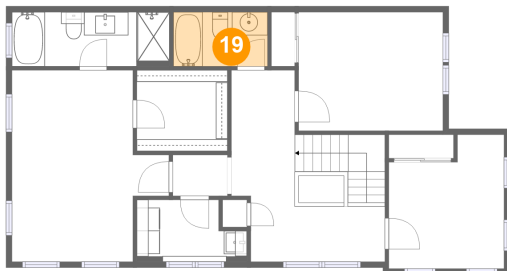
18 Floor 3 - Primary Bath



Max Dimensions: 13'6" x 4'8"
Calculated Area: 63 sq. ft
Included: Yes

Heated: Yes
Finished: Yes
Enclosed: Yes
Contiguous: Yes
Permitted: Yes
Wet space: Yes
Addition: No
Conversion: No

19 Floor 3 - Bath



Max Dimensions: 8'1" x 4'8"
Calculated Area: 38 sq. ft
Included: Yes

Heated: Yes
Finished: Yes
Enclosed: Yes
Contiguous: Yes
Permitted: Yes
Wet space: Yes
Addition: No
Conversion: No

20 Floor 3 - Hall



Max Dimensions: 4'8" x 3'6"
Calculated Area: 17 sq. ft
Included: Yes

Heated: Yes
Finished: Yes
Enclosed: Yes
Contiguous: Yes
Permitted: Yes
Wet space: No
Addition: No
Conversion: No