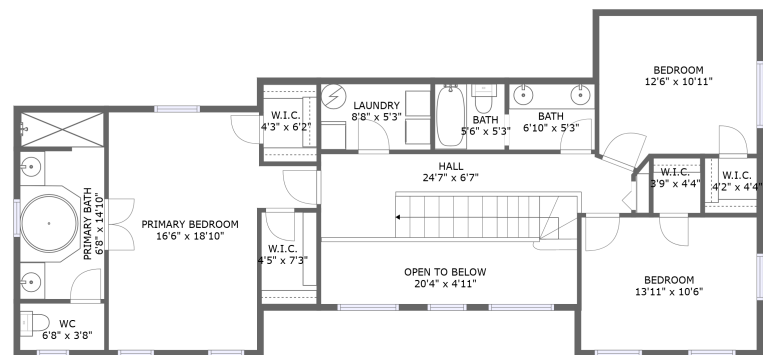


Home report

2900 West Estrella Street, Palma Ceia, Tampa, Hillsborough County, Florida, United States, 33629



FLOOR 2



FLOOR 1


Total Area: 2050 sq. ft

Floor 1: 986 sq. ft, Floor 2: 1064 sq. ft

Excluded: Garage 355 sq. ft, Opentobelow 101 sq. ft, Walls: 190 sq. ft

Property summary

 2 Floors

 3 Bedrooms

 2 Bathrooms

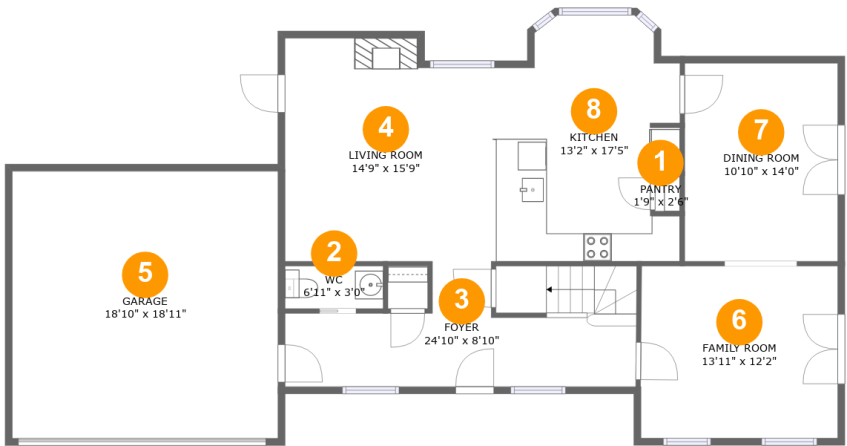
Home report

2900 West Estrella Street, Palma Ceia, Tampa, Hillsborough  
County, Florida, United States, 33629

 **1**  
Half baths

 **1**  
Garages

2900 West Estrella Street, Palma Ceia, Tampa, Hillsborough County, Florida, United States, 33629



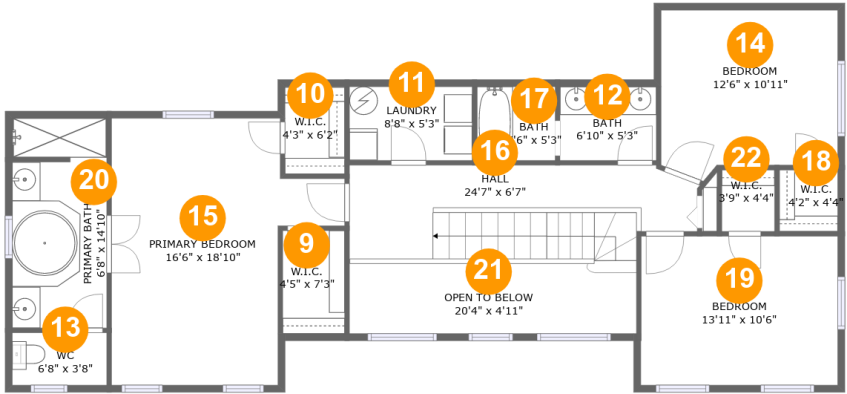
Room dimensions

Floor 1 Total:986sqft   Excluded: 355sqft

#		Max Dimensions	sqft	Included
1	Pantry	1'9" x 2'6"	4 sq. ft	Yes
2	WC	6'11" x 3'0"	21 sq. ft	Yes
3	Foyer	24'10" x 8'10"	164 sq. ft	Yes
4	Living Room	14'9" x 15'9"	221 sq. ft	Yes
5	Garage	18'10" x 18'11"	355 sq. ft	No
6	Family Room	13'11" x 12'2"	169 sq. ft	Yes
7	Dining Room	10'10" x 14'0"	152 sq. ft	Yes
8	Kitchen	13'2" x 17'5"	203 sq. ft	Yes

Home report

2900 West Estrella Street, Palma Ceia, Tampa, Hillsborough County, Florida, United States, 33629



Room dimensions

Floor 2 Total:1064sqft   Excluded: 101sqft

#		Max Dimensions	sqft	Included
9	W.I.C.	4'5" x 7'3"	32 sq. ft	Yes
10	W.I.C.	4'3" x 6'2"	26 sq. ft	Yes
11	Laundry	8'8" x 5'3"	45 sq. ft	Yes
12	Bath	6'10" x 5'3"	36 sq. ft	Yes
13	WC	6'8" x 3'8"	25 sq. ft	Yes
14	Bedroom	12'6" x 10'11"	139 sq. ft	Yes
15	Primary Bedroom	16'6" x 18'10"	239 sq. ft	Yes
16	Hall	24'7" x 6'7"	159 sq. ft	Yes
17	Bath	5'6" x 5'3"	29 sq. ft	Yes
18	W.I.C.	4'2" x 4'4"	18 sq. ft	Yes
19	Bedroom	13'11" x 10'6"	147 sq. ft	Yes

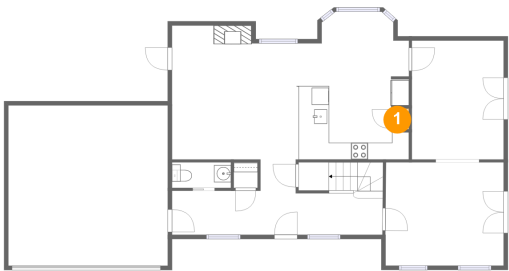
Home report

2900 West Estrella Street, Palma Ceia, Tampa, Hillsborough  
County, Florida, United States, 33629

#		Max Dimensions	sqft	Included
20	Primary Bath	6'8" x 14'10"	98 sq. ft	Yes
21	Open To Below	20'4" x 4'11"	101 sq. ft	No
22	W.I.C.	3'9" x 4'4"	16 sq. ft	Yes

2900 West Estrella Street, Palma Ceia, Tampa, Hillsborough County, Florida, United States, 33629

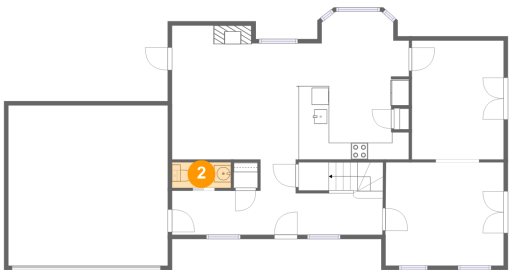
1 Floor 1 - Pantry



Max Dimensions: 1'9" x 2'6"  
Calculated Area: 4 sq. ft  
Included: Yes

Heated: Yes  
Finished: Yes  
Enclosed: Yes  
Contiguous: Yes  
Permitted: Yes  
Wet space: No  
Addition: No  
Conversion: No

2 Floor 1 - WC



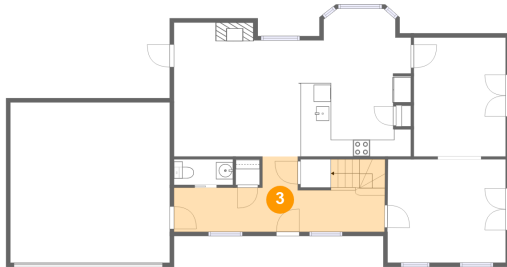
Max Dimensions: 6'11" x 3'0"  
Calculated Area: 21 sq. ft  
Included: Yes

Heated: Yes  
Finished: Yes  
Enclosed: Yes  
Contiguous: Yes  
Permitted: Yes  
Wet space: Yes  
Addition: No  
Conversion: No

## Home report

2900 West Estrella Street, Palma Ceia, Tampa, Hillsborough County, Florida, United States, 33629

### 3 Floor 1 - Foyer



Max Dimensions: 24'10" x 8'10"  
Calculated Area: 164 sq. ft  
Included: Yes

Heated: Yes  
Finished: Yes  
Enclosed: Yes  
Contiguous: Yes  
Permitted: Yes  
Wet space: No  
Addition: No  
Conversion: No

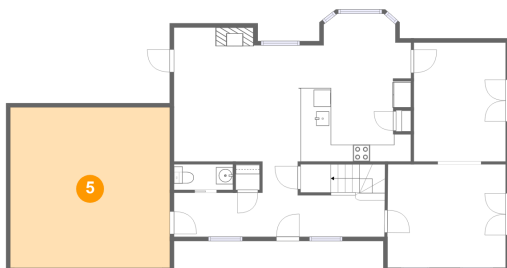
### 4 Floor 1 - Living Room



Max Dimensions: 14'9" x 15'9"  
Calculated Area: 221 sq. ft  
Included: Yes

Heated: Yes  
Finished: Yes  
Enclosed: Yes  
Contiguous: Yes  
Permitted: Yes  
Wet space: No  
Addition: No  
Conversion: No

### 5 Floor 1 - Garage



Max Dimensions: 18'10" x 18'11"  
Calculated Area: 355 sq. ft  
Included: No

Heated: No  
Finished: No  
Enclosed: Yes  
Contiguous: Yes  
Permitted: Yes  
Wet space: No  
Addition: No  
Conversion: No

2900 West Estrella Street, Palma Ceia, Tampa, Hillsborough County, Florida, United States, 33629

6 Floor 1 - Family Room



Max Dimensions: 13'11" x 12'2"  
Calculated Area: 169 sq. ft  
Included: Yes

Heated: Yes  
Finished: Yes  
Enclosed: Yes  
Contiguous: Yes  
Permitted: Yes  
Wet space: No  
Addition: No  
Conversion: No

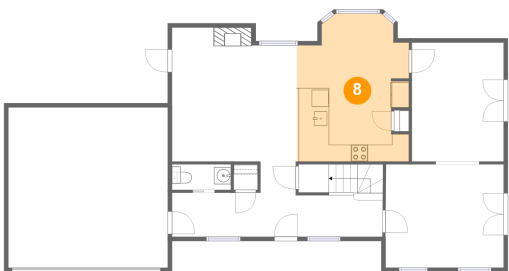
7 Floor 1 - Dining Room



Max Dimensions: 10'10" x 14'0"  
Calculated Area: 152 sq. ft  
Included: Yes

Heated: Yes  
Finished: Yes  
Enclosed: Yes  
Contiguous: Yes  
Permitted: Yes  
Wet space: No  
Addition: No  
Conversion: No

8 Floor 1 - Kitchen



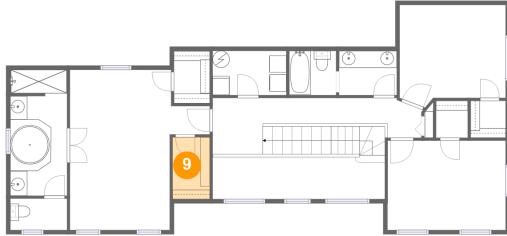
Max Dimensions: 13'2" x 17'5"  
Calculated Area: 203 sq. ft  
Included: Yes

Heated: Yes  
Finished: Yes  
Enclosed: Yes  
Contiguous: Yes  
Permitted: Yes  
Wet space: No  
Addition: No  
Conversion: No



2900 West Estrella Street, Palma Ceia, Tampa, Hillsborough County, Florida, United States, 33629

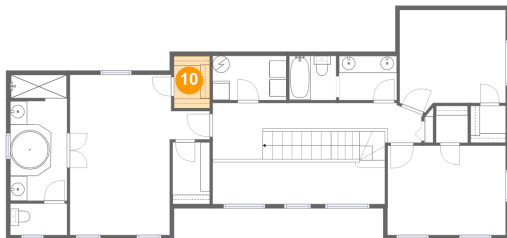
## 9 Floor 2 - W.I.C.



Max Dimensions: 4'5" x 7'3"  
Calculated Area: 32 sq. ft  
Included: Yes

Heated: Yes  
Finished: Yes  
Enclosed: Yes  
Contiguous: Yes  
Permitted: Yes  
Wet space: No  
Addition: No  
Conversion: No

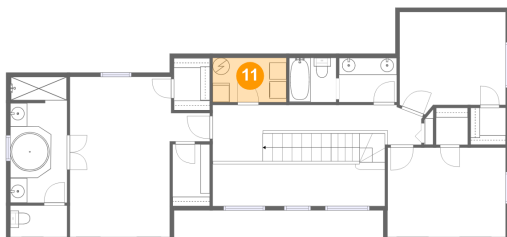
## 10 Floor 2 - W.I.C.



Max Dimensions: 4'3" x 6'2"  
Calculated Area: 26 sq. ft  
Included: Yes

Heated: Yes  
Finished: Yes  
Enclosed: Yes  
Contiguous: Yes  
Permitted: Yes  
Wet space: No  
Addition: No  
Conversion: No

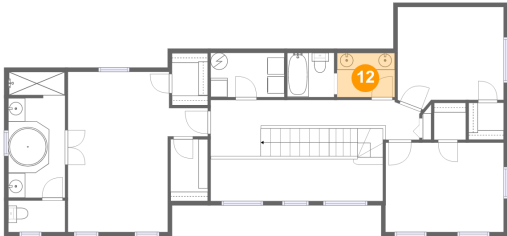
## 11 Floor 2 - Laundry



Max Dimensions: 8'8" x 5'3"  
Calculated Area: 45 sq. ft  
Included: Yes

Heated: Yes  
Finished: Yes  
Enclosed: Yes  
Contiguous: Yes  
Permitted: Yes  
Wet space: No  
Addition: No  
Conversion: No

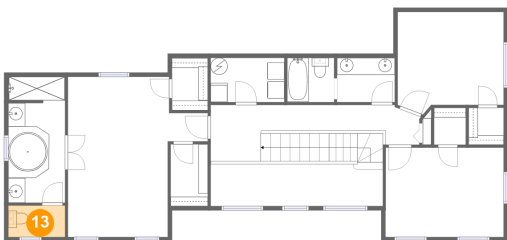
12 Floor 2 - Bath



Max Dimensions: 6'10" x 5'3"  
Calculated Area: 36 sq. ft  
Included: Yes

Heated: Yes  
Finished: Yes  
Enclosed: Yes  
Contiguous: Yes  
Permitted: Yes  
Wet space: Yes  
Addition: No  
Conversion: No

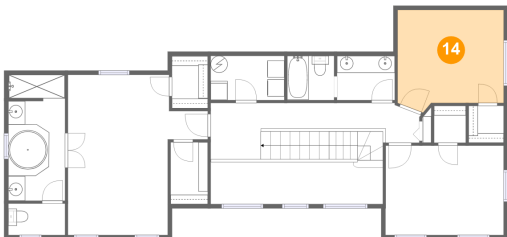
13 Floor 2 - WC



Max Dimensions: 6'8" x 3'8"  
Calculated Area: 25 sq. ft  
Included: Yes

Heated: Yes  
Finished: Yes  
Enclosed: Yes  
Contiguous: Yes  
Permitted: Yes  
Wet space: Yes  
Addition: No  
Conversion: No

14 Floor 2 - Bedroom

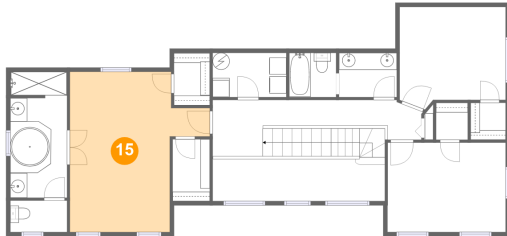


Max Dimensions: 12'6" x 10'11"  
Calculated Area: 139 sq. ft  
Included: Yes

Heated: Yes  
Finished: Yes  
Enclosed: Yes  
Contiguous: Yes  
Permitted: Yes  
Wet space: No  
Addition: No  
Conversion: No

2900 West Estrella Street, Palma Ceia, Tampa, Hillsborough  
County, Florida, United States, 33629

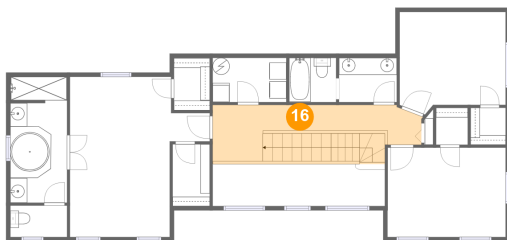
## 15 Floor 2 - Primary Bedroom



Max Dimensions: 16'6" x 18'10"  
Calculated Area: 239 sq. ft  
Included: Yes

Heated: Yes  
Finished: Yes  
Enclosed: Yes  
Contiguous: Yes  
Permitted: Yes  
Wet space: No  
Addition: No  
Conversion: No

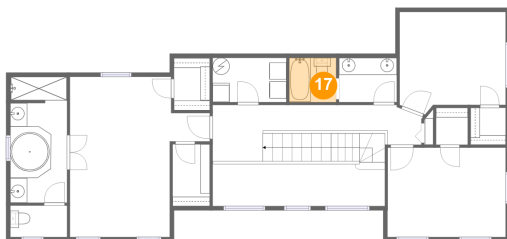
## 16 Floor 2 - Hall



Max Dimensions: 24'7" x 6'7"  
Calculated Area: 159 sq. ft  
Included: Yes

Heated: Yes  
Finished: Yes  
Enclosed: Yes  
Contiguous: Yes  
Permitted: Yes  
Wet space: No  
Addition: No  
Conversion: No

## 17 Floor 2 - Bath



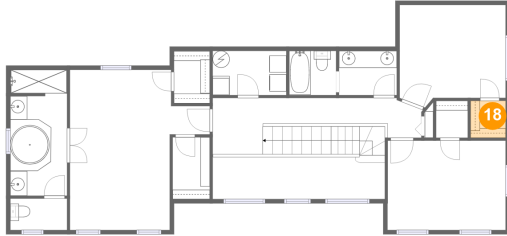
Max Dimensions: 5'6" x 5'3"  
Calculated Area: 29 sq. ft  
Included: Yes

Heated: Yes  
Finished: Yes  
Enclosed: Yes  
Contiguous: Yes  
Permitted: Yes  
Wet space: Yes  
Addition: No  
Conversion: No

## Home report

2900 West Estrella Street, Palma Ceia, Tampa, Hillsborough County, Florida, United States, 33629

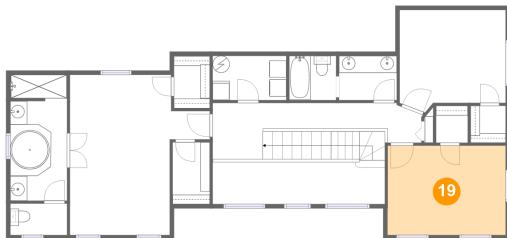
### 18 Floor 2 - W.I.C.



Max Dimensions: 4'2" x 4'4"  
Calculated Area: 18 sq. ft  
Included: Yes

Heated: Yes  
Finished: Yes  
Enclosed: Yes  
Contiguous: Yes  
Permitted: Yes  
Wet space: No  
Addition: No  
Conversion: No

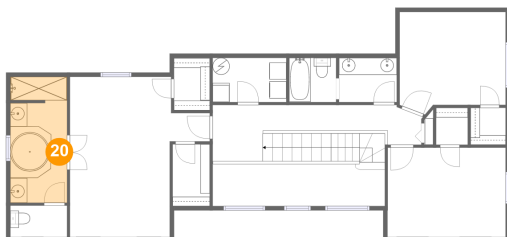
### 19 Floor 2 - Bedroom



Max Dimensions: 13'11" x 10'6"  
Calculated Area: 147 sq. ft  
Included: Yes

Heated: Yes  
Finished: Yes  
Enclosed: Yes  
Contiguous: Yes  
Permitted: Yes  
Wet space: No  
Addition: No  
Conversion: No

### 20 Floor 2 - Primary Bath

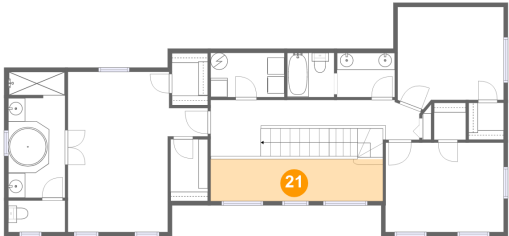


Max Dimensions: 6'8" x 14'10"  
Calculated Area: 98 sq. ft  
Included: Yes

Heated: Yes  
Finished: Yes  
Enclosed: Yes  
Contiguous: Yes  
Permitted: Yes  
Wet space: Yes  
Addition: No  
Conversion: No

2900 West Estrella Street, Palma Ceia, Tampa, Hillsborough County, Florida, United States, 33629

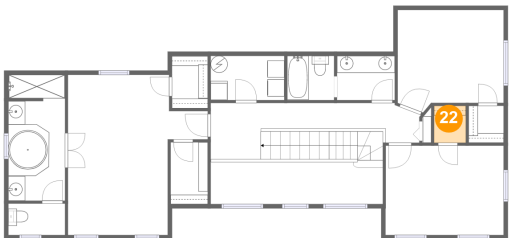
21 Floor 2 - Open To Below



Max Dimensions: 20'4" x 4'11"  
Calculated Area: 101 sq. ft  
Included: No

Heated: No  
Finished: No  
Enclosed: No  
Contiguous: Yes  
Permitted: No  
Wet space: No  
Addition: No  
Conversion: No

22 Floor 2 - W.I.C.



Max Dimensions: 3'9" x 4'4"  
Calculated Area: 16 sq. ft  
Included: Yes

Heated: Yes  
Finished: Yes  
Enclosed: Yes  
Contiguous: Yes  
Permitted: Yes  
Wet space: No  
Addition: No  
Conversion: No