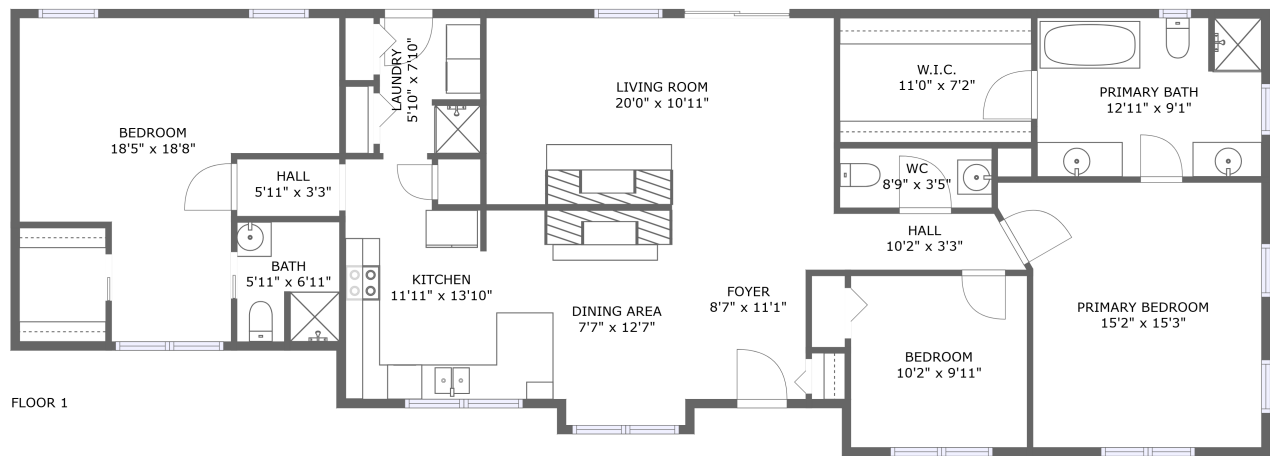
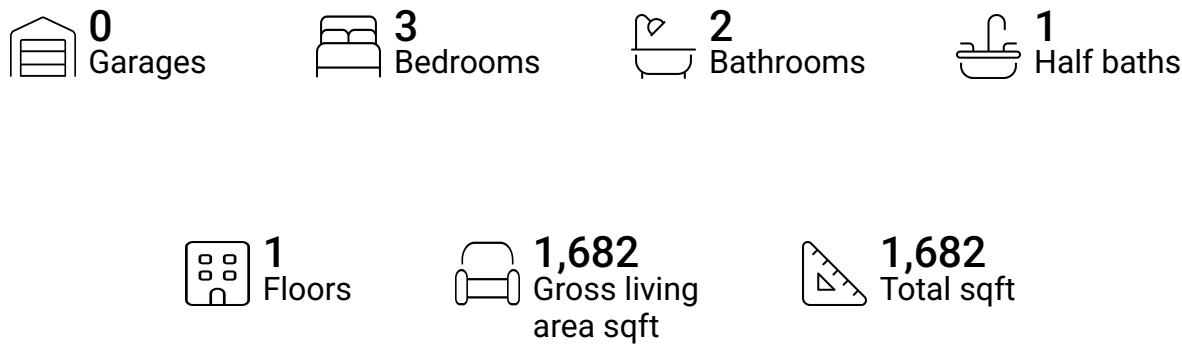


Home report

203 Terry Lane, Cornersville, Marshall County, Tennessee,
United States, 37047

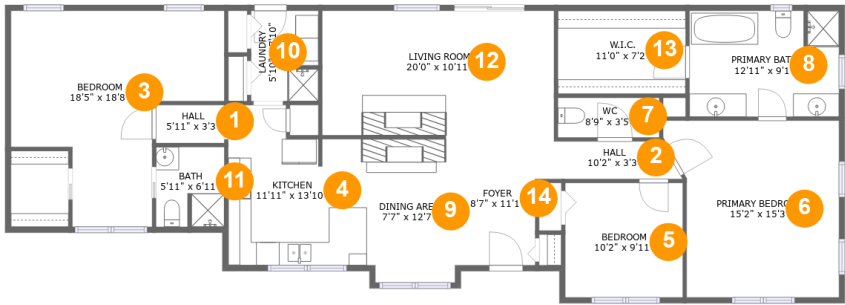


Property summary



Home report

203 Terry Lane, Cornersville, Marshall County, Tennessee,
United States, 37047



Room dimensions

Floor 1 Total sqft: 1682 Living area: 1682

#		Dimensions	sqft	Counted as living area
1	Hall	5'11" x 3'3"	19 sq. ft	Yes
2	Hall	10'2" x 3'3"	33 sq. ft	Yes
3	Bedroom	18'5" x 18'8"	239 sq. ft	Yes
4	Kitchen	11'11" x 13'10"	143 sq. ft	Yes
5	Bedroom	10'2" x 9'11"	100 sq. ft	Yes
6	Primary Bedroom	15'2" x 15'3"	207 sq. ft	Yes
7	WC	8'9" x 3'5"	30 sq. ft	Yes
8	Primary Bath	12'11" x 9'1"	117 sq. ft	Yes
9	Dining Area	7'7" x 12'7"	94 sq. ft	Yes
10	Laundry	5'10" x 7'10"	44 sq. ft	Yes
11	Bath	5'11" x 6'11"	40 sq. ft	Yes

Home report

203 Terry Lane, Cornersville, Marshall County, Tennessee,
United States, 37047

#		Dimensions	sqft	Counted as living area
12	Living Room	20'0" x 10'11"	216 sq. ft	Yes
13	W.I.C.	11'0" x 7'2"	79 sq. ft	Yes
14	Foyer	8'7" x 11'1"	83 sq. ft	Yes

1 Floor 1 - Hall



Dimensions: 5'11" x 3'3"
Area: 19 sq. ft
Counted as living area: Yes

Heated: Yes
Finished: Yes
Enclosed: Yes
Contiguous: Yes
Permitted: Yes
Wet space: No
Addition: No
Conversion: No

2 Floor 1 - Hall



Dimensions: 10'2" x 3'3"
Area: 33 sq. ft
Counted as living area: Yes

Heated: Yes
Finished: Yes
Enclosed: Yes
Contiguous: Yes
Permitted: Yes
Wet space: No
Addition: No
Conversion: No

Home report

203 Terry Lane, Cornersville, Marshall County, Tennessee,
United States, 37047

3 Floor 1 - Bedroom



Dimensions: 18'5" x 18'8"
Area: 239 sq. ft
Counted as living area: Yes

Heated: Yes
Finished: Yes
Enclosed: Yes
Contiguous: Yes
Permitted: Yes
Wet space: No
Addition: No
Conversion: No

4 Floor 1 - Kitchen



Dimensions: 11'11" x 13'10"
Area: 143 sq. ft
Counted as living area: Yes

Heated: Yes
Finished: Yes
Enclosed: Yes
Contiguous: Yes
Permitted: Yes
Wet space: No
Addition: No
Conversion: No

5 Floor 1 - Bedroom



Dimensions: 10'2" x 9'11"
Area: 100 sq. ft
Counted as living area: Yes

Heated: Yes
Finished: Yes
Enclosed: Yes
Contiguous: Yes
Permitted: Yes
Wet space: No
Addition: No
Conversion: No

Home report

203 Terry Lane, Cornersville, Marshall County, Tennessee,
United States, 37047

6 Floor 1 - Primary Bedroom



Dimensions: 15'2" x 15'3"
Area: 207 sq. ft
Counted as living area: Yes

Heated: Yes
Finished: Yes
Enclosed: Yes
Contiguous: Yes
Permitted: Yes
Wet space: No
Addition: No
Conversion: No

7 Floor 1 - WC



Dimensions: 8'9" x 3'5"
Area: 30 sq. ft
Counted as living area: Yes

Heated: Yes
Finished: Yes
Enclosed: Yes
Contiguous: Yes
Permitted: Yes
Wet space: Yes
Addition: No
Conversion: No

8 Floor 1 - Primary Bath



Dimensions: 12'11" x 9'1"
Area: 117 sq. ft
Counted as living area: Yes

Heated: Yes
Finished: Yes
Enclosed: Yes
Contiguous: Yes
Permitted: Yes
Wet space: Yes
Addition: No
Conversion: No

203 Terry Lane, Cornersville, Marshall County, Tennessee,
United States, 37047

9 Floor 1 - Dining Area



Dimensions: 7'7" x 12'7"
Area: 94 sq. ft
Counted as living area: Yes

Heated: Yes
Finished: Yes
Enclosed: Yes
Contiguous: Yes
Permitted: Yes
Wet space: No
Addition: No
Conversion: No

10 Floor 1 - Laundry



Dimensions: 5'10" x 7'10"
Area: 44 sq. ft
Counted as living area: Yes

Heated: Yes
Finished: Yes
Enclosed: Yes
Contiguous: Yes
Permitted: Yes
Wet space: No
Addition: No
Conversion: No

11 Floor 1 - Bath



Dimensions: 5'11" x 6'11"
Area: 40 sq. ft
Counted as living area: Yes

Heated: Yes
Finished: Yes
Enclosed: Yes
Contiguous: Yes
Permitted: Yes
Wet space: Yes
Addition: No
Conversion: No

Home report

203 Terry Lane, Cornersville, Marshall County, Tennessee,
United States, 37047

12 Floor 1 - Living Room



Dimensions: 20'0" x 10'11"
Area: 216 sq. ft
Counted as living area: Yes

Heated: Yes
Finished: Yes
Enclosed: Yes
Contiguous: Yes
Permitted: Yes
Wet space: No
Addition: No
Conversion: No

13 Floor 1 - W.I.C.



Dimensions: 11'0" x 7'2"
Area: 79 sq. ft
Counted as living area: Yes

Heated: Yes
Finished: Yes
Enclosed: Yes
Contiguous: Yes
Permitted: Yes
Wet space: No
Addition: No
Conversion: No

14 Floor 1 - Foyer



Dimensions: 8'7" x 11'1"
Area: 83 sq. ft
Counted as living area: Yes

Heated: Yes
Finished: Yes
Enclosed: Yes
Contiguous: Yes
Permitted: Yes
Wet space: No
Addition: No
Conversion: No