

# 25-789 Ota Ave

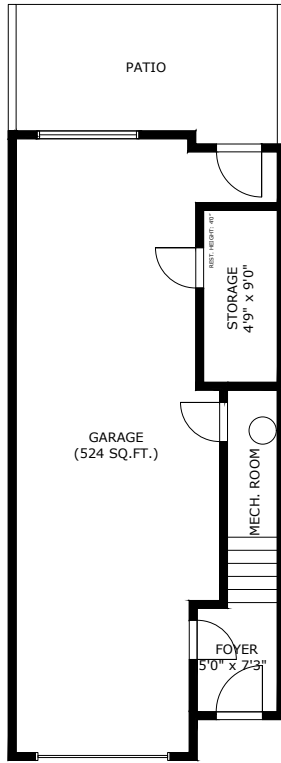
New Westminster BC V3M 0M7

Lower Level Area: 85 SQ.FT.  
Main Level Area: 625 SQ.FT.  
Upper Level Area: 636 SQ.FT.  
**Total Area 1,346 SQ.FT.**  
Balcony Area: 85 SQ.FT.  
Garage Area: 8'0"

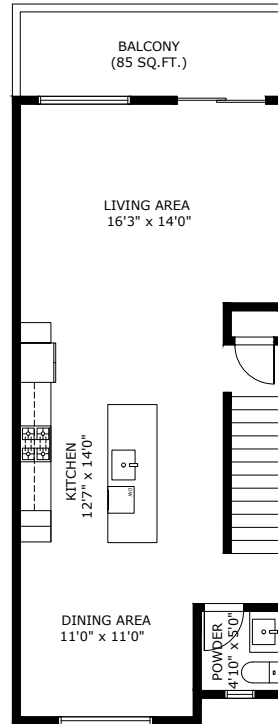
3  
BEDROOMS

3  
BATHROOMS

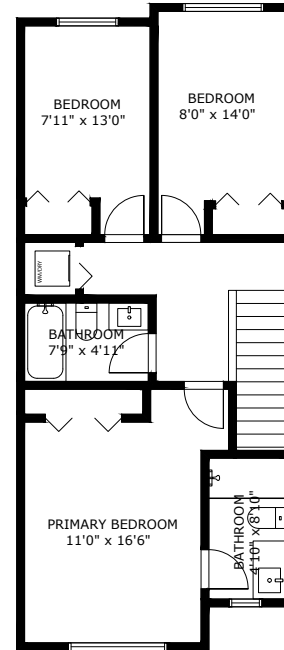
1,349  
TOTAL SQ.FT.



Lower Level Area:  
Ceiling Height: 8'0"



Main Level Area:  
Ceiling Height: 9'0"



Upper Level Area:  
Ceiling Height: 8'0"

## 25-789 OTA AVE NEW WESTMINSTER BC V3M 0M7

Measurements are approximate and may not be to scale. Gross measurements provided by agent.  
The floor plan illustration is not suitable for construction/architectural purposes.  
This communication is not intended to cause or induce breach of an existing agency agreement

**3D IMMERSIVE**  
Tours Photos Floor Plans

Professionally measured by 3D Immersive Marketing Ltd.  
Lead Floor Planner: *Sara Alexander*  
Quality Assurance: *Dianne Graham*