

6405 Northeast 284th Street, Battle Ground, Clark County, Washington, United States, 98604



Property summary

 **2** Garages

 **3** Bedrooms

 **2** Bathrooms

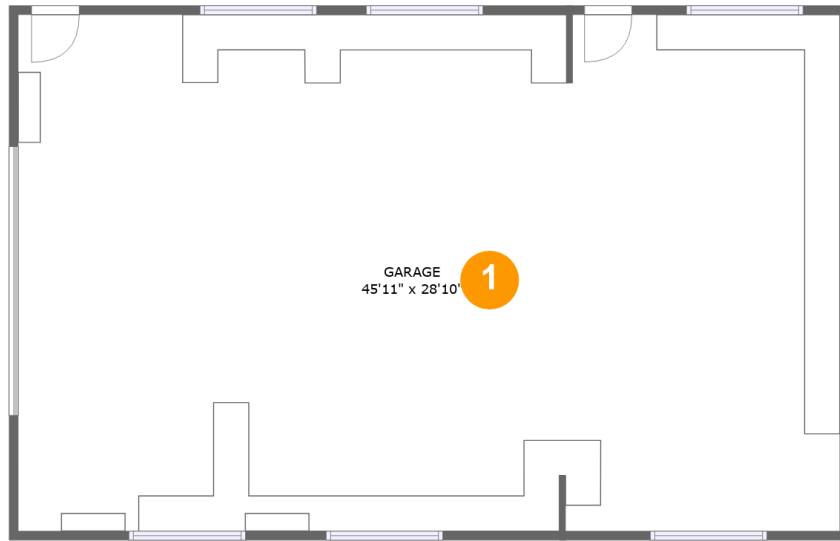
 **0** Half baths

 **2** Floors

 **1,666** Gross living area sqft

 **4,069** Total sqft

**6405 Northeast 284th Street, Battle Ground, Clark
County, Washington, United States, 98604**



Room dimensions

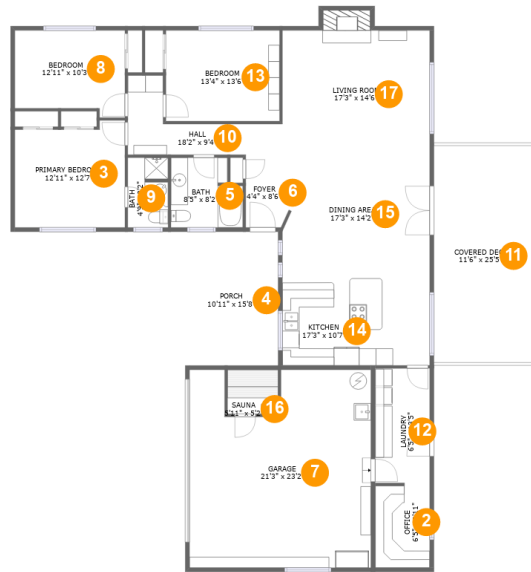
Floor 1

Total sqft: 1401

Living area: 0

#		Dimensions	sqft	Counted as living area
1	Garage	45'11" x 28'10"	1323 sq. ft	No

6405 Northeast 284th Street, Battle Ground, Clark County, Washington, United States, 98604



Room dimensions

Floor 2

Total sqft: 2668 Living area: 1666

#		Dimensions	sqft	Counted as living area
2	Office	6'5" x 9'11"	62 sq. ft	Yes
3	Primary Bedroom	12'11" x 12'7"	151 sq. ft	Yes
4	Porch	10'11" x 15'8"	171 sq. ft	No
5	Bath	8'5" x 8'2"	63 sq. ft	Yes
6	Foyer	4'4" x 8'6"	37 sq. ft	Yes
7	Garage	21'3" x 23'2"	457 sq. ft	No
8	Bedroom	12'11" x 10'3"	121 sq. ft	Yes
9	Bath	4'9" x 8'2"	38 sq. ft	Yes
10	Hall	18'2" x 9'4"	89 sq. ft	Yes
11	Covered Deck	11'6" x 25'5"	294 sq. ft	No
12	Laundry	6'5" x 13'5"	86 sq. ft	Yes

Scan captured on Thu, 06 Mar 2025 22:41:12 GMT

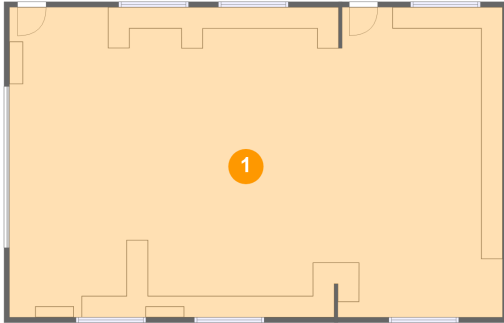
Information is calculated by Cubicasa technology deemed highly reliable but not guaranteed.

**6405 Northeast 284th Street, Battle Ground, Clark
County, Washington, United States, 98604**

#		Dimensions	sqft	Counted as living area
13	Bedroom	13'4" x 13'6"	142 sq. ft	Yes
14	Kitchen	17'3" x 10'7"	182 sq. ft	Yes
15	Dining Area	17'3" x 14'2"	243 sq. ft	Yes
16	Sauna	5'11" x 5'2"	31 sq. ft	No
17	Living Room	17'3" x 14'6"	265 sq. ft	Yes

6405 Northeast 284th Street, Battle Ground, Clark County, Washington, United States, 98604

1 Floor 1 - Garage



Dimensions: 45'11" x 28'10"
Area: 1323 sq. ft
Counted as living area: No

Heated: No
Finished: No
Enclosed: Yes
Contiguous: Yes
Permitted: Yes
Wet space: No
Addition: No
Conversion: No

2 Floor 2 - Office



Dimensions: 6'5" x 9'11"
Area: 62 sq. ft
Counted as living area: Yes

Heated: Yes
Finished: Yes
Enclosed: Yes
Contiguous: Yes
Permitted: Yes
Wet space: No
Addition: No
Conversion: No

6405 Northeast 284th Street, Battle Ground, Clark County, Washington, United States, 98604

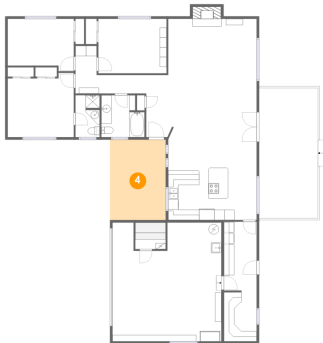
3 Floor 2 - Primary Bedroom



Dimensions: 12'11" x 12'7"
Area: 151 sq. ft
Counted as living area: Yes

Heated: Yes
Finished: Yes
Enclosed: Yes
Contiguous: Yes
Permitted: Yes
Wet space: No
Addition: No
Conversion: No

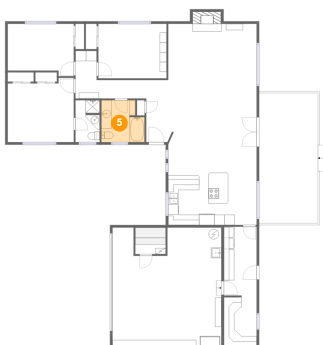
4 Floor 2 - Porch



Dimensions: 10'11" x 15'8"
Area: 171 sq. ft
Counted as living area: No

Heated: No
Finished: Yes
Enclosed: No
Contiguous: Yes
Permitted: Yes
Wet space: No
Addition: No
Conversion: No

5 Floor 2 - Bath



Dimensions: 8'5" x 8'2"
Area: 63 sq. ft
Counted as living area: Yes

Heated: Yes
Finished: Yes
Enclosed: Yes
Contiguous: Yes
Permitted: Yes
Wet space: Yes
Addition: No
Conversion: No

6405 Northeast 284th Street, Battle Ground, Clark County, Washington, United States, 98604

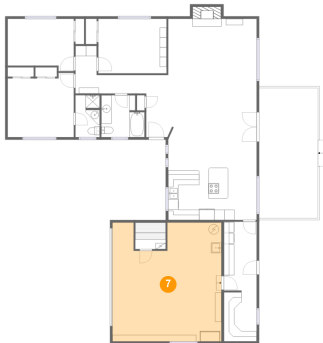
6 Floor 2 - Foyer



Dimensions: 4'4" x 8'6"
Area: 37 sq. ft
Counted as living area: Yes

Heated: Yes
Finished: Yes
Enclosed: Yes
Contiguous: Yes
Permitted: Yes
Wet space: No
Addition: No
Conversion: No

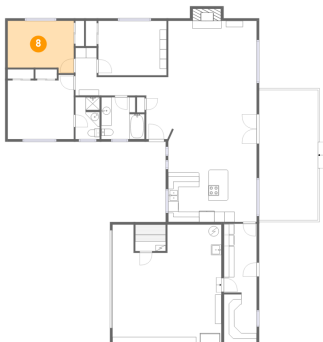
7 Floor 2 - Garage



Dimensions: 21'3" x 23'2"
Area: 457 sq. ft
Counted as living area: No

Heated: No
Finished: No
Enclosed: Yes
Contiguous: Yes
Permitted: Yes
Wet space: No
Addition: No
Conversion: No

8 Floor 2 - Bedroom



Dimensions: 12'11" x 10'3"
Area: 121 sq. ft
Counted as living area: Yes

Heated: Yes
Finished: Yes
Enclosed: Yes
Contiguous: Yes
Permitted: Yes
Wet space: No
Addition: No
Conversion: No

6405 Northeast 284th Street, Battle Ground, Clark County, Washington, United States, 98604

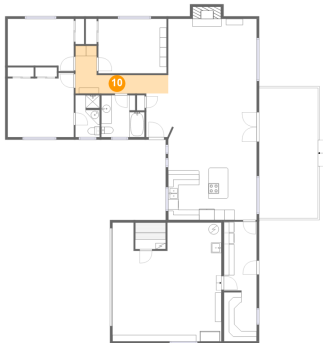
9 Floor 2 - Bath



Dimensions: 4'9" x 8'2"
Area: 38 sq. ft
Counted as living area: Yes

Heated: Yes
Finished: Yes
Enclosed: Yes
Contiguous: Yes
Permitted: Yes
Wet space: Yes
Addition: No
Conversion: No

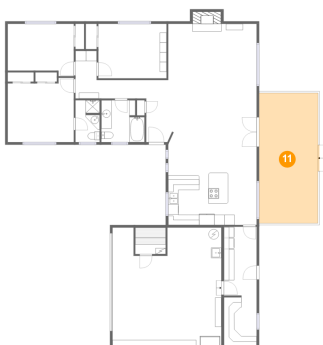
10 Floor 2 - Hall



Dimensions: 18'2" x 9'4"
Area: 89 sq. ft
Counted as living area: Yes

Heated: Yes
Finished: Yes
Enclosed: Yes
Contiguous: Yes
Permitted: Yes
Wet space: No
Addition: No
Conversion: No

11 Floor 2 - Covered Deck



Dimensions: 11'6" x 25'5"
Area: 294 sq. ft
Counted as living area: No

Heated: No
Finished: Yes
Enclosed: No
Contiguous: Yes
Permitted: Yes
Wet space: No
Addition: No
Conversion: No

**6405 Northeast 284th Street, Battle Ground, Clark
County, Washington, United States, 98604**

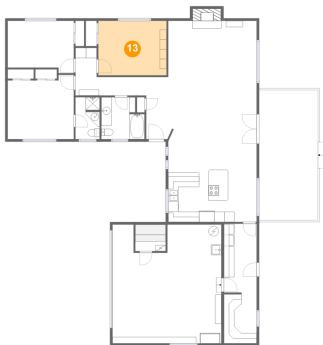
12 Floor 2 - Laundry



Dimensions: 6'5" x 13'5"
Area: 86 sq. ft
Counted as living area: Yes

Heated: Yes
Finished: Yes
Enclosed: Yes
Contiguous: Yes
Permitted: Yes
Wet space: No
Addition: No
Conversion: No

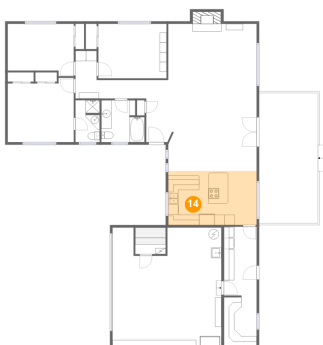
13 Floor 2 - Bedroom



Dimensions: 13'4" x 13'6"
Area: 142 sq. ft
Counted as living area: Yes

Heated: Yes
Finished: Yes
Enclosed: Yes
Contiguous: Yes
Permitted: Yes
Wet space: No
Addition: No
Conversion: No

14 Floor 2 - Kitchen

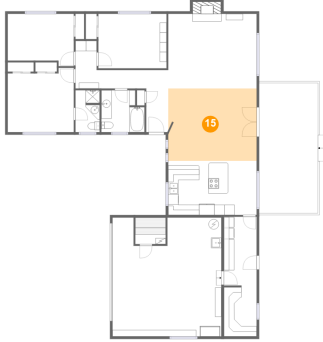


Dimensions: 17'3" x 10'7"
Area: 182 sq. ft
Counted as living area: Yes

Heated: Yes
Finished: Yes
Enclosed: Yes
Contiguous: Yes
Permitted: Yes
Wet space: No
Addition: No
Conversion: No

**6405 Northeast 284th Street, Battle Ground, Clark
County, Washington, United States, 98604**

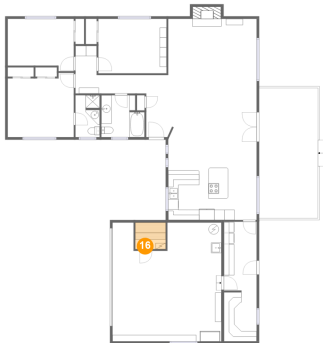
15 Floor 2 - Dining Area



Dimensions: 17'3" x 14'2"
Area: 243 sq. ft
Counted as living area: Yes

Heated: Yes
Finished: Yes
Enclosed: Yes
Contiguous: Yes
Permitted: Yes
Wet space: No
Addition: No
Conversion: No

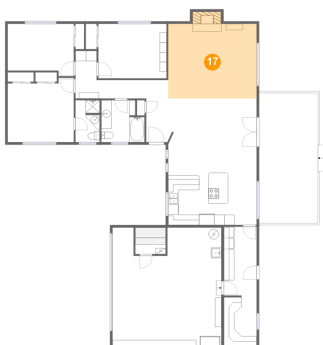
16 Floor 2 - Sauna



Dimensions: 5'11" x 5'2"
Area: 31 sq. ft
Counted as living area: No

Heated: Yes
Finished: Yes
Enclosed: Yes
Contiguous: No
Permitted: Yes
Wet space: No
Addition: No
Conversion: No

17 Floor 2 - Living Room



Dimensions: 17'3" x 14'6"
Area: 265 sq. ft
Counted as living area: Yes

Heated: Yes
Finished: Yes
Enclosed: Yes
Contiguous: Yes
Permitted: Yes
Wet space: No
Addition: No
Conversion: No