

Home report

6131 Carolina Trail, Bryant Heights, Hollins, Roanoke, Roanoke County, Virginia, United States, 24019



Total Area: 2686 sq. ft

Floor 1: 793 sq. ft, Floor 2: 862 sq. ft, Floor 3: 1031 sq. ft

Excluded: Storage 312 sq. ft, Outdoor Patio 419 sq. ft, Garage 362 sq. ft, Outdoor Porch 98 sq. ft, Outdoor Deck 193 sq. ft, Fireplace 10 sq. ft

Property summary

 **3** Floors

 **5** Bedrooms

 **2** Bathrooms

Home report

6131 Carolina Trail, Bryant Heights, Hollins, Roanoke, Roanoke County, Virginia, United States, 24019



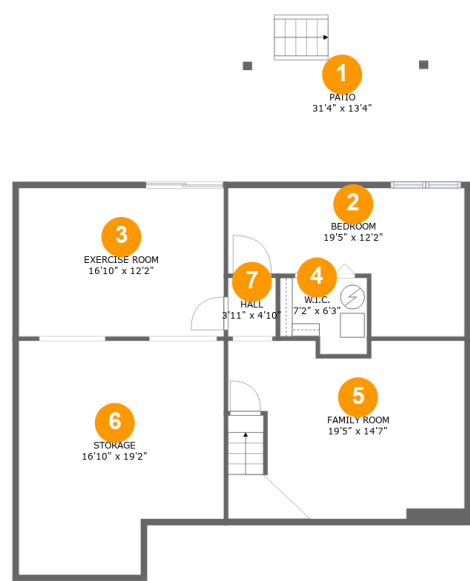
1
Half baths



1
Garages

Home report

6131 Carolina Trail, Bryant Heights, Hollins, Roanoke, Roanoke County, Virginia, United States, 24019



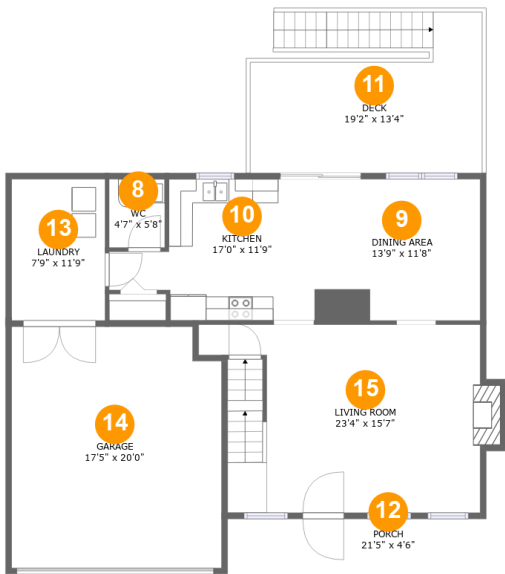
Room dimensions

Floor 1 Total:793sqft Excluded: 731sqft

#		Max Dimensions	sqft	Included
1	Patio	31'4" x 13'4"	419 sq. ft	No
2	Bedroom	19'5" x 12'2"	175 sq. ft	Yes
3	Exercise Room	16'10" x 12'2"	205 sq. ft	Yes
4	W.I.C.	7'2" x 6'3"	40 sq. ft	Yes
5	Family Room	19'5" x 14'7"	270 sq. ft	Yes
6	Storage	16'10" x 19'2"	291 sq. ft	No
7	Hall	3'11" x 4'10"	19 sq. ft	Yes

Home report

6131 Carolina Trail, Bryant Heights, Hollins, Roanoke, Roanoke County, Virginia, United States, 24019



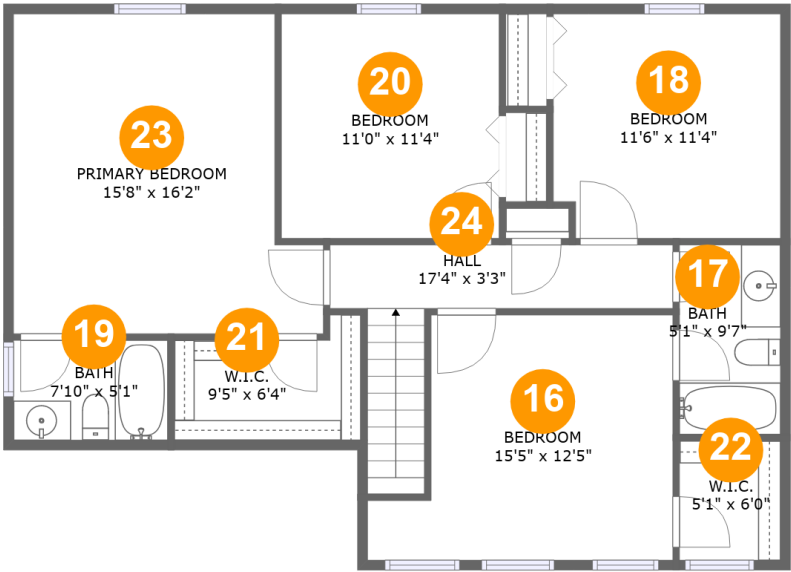
Room dimensions

Floor 2 Total:862sqft Excluded: 663sqft

#		Max Dimensions	sqft	Included
8	WC	4'7" x 5'8"	26 sq. ft	Yes
9	Dining Area	13'9" x 11'8"	161 sq. ft	Yes
10	Kitchen	17'0" x 11'9"	157 sq. ft	Yes
11	Deck	19'2" x 13'4"	193 sq. ft	No
12	Porch	21'5" x 4'6"	98 sq. ft	No
13	Laundry	7'9" x 11'9"	91 sq. ft	Yes
14	Garage	17'5" x 20'0"	341 sq. ft	No
15	Living Room	23'4" x 15'7"	337 sq. ft	Yes

Home report

6131 Carolina Trail, Bryant Heights, Hollins, Roanoke, Roanoke County, Virginia, United States, 24019



Room dimensions

Floor 3

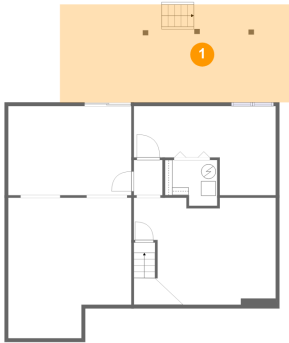
Total:1031sqft

Excluded: 0sqft

#		Max Dimensions	sqft	Included
16	Bedroom	15'5" x 12'5"	161 sq. ft	Yes
17	Bath	5'1" x 9'7"	49 sq. ft	Yes
18	Bedroom	11'6" x 11'4"	128 sq. ft	Yes
19	Bath	7'10" x 5'1"	39 sq. ft	Yes
20	Bedroom	11'0" x 11'4"	125 sq. ft	Yes
21	W.I.C.	9'5" x 6'4"	50 sq. ft	Yes
22	W.I.C.	5'1" x 6'0"	31 sq. ft	Yes
23	Primary Bedroom	15'8" x 16'2"	225 sq. ft	Yes
24	Hall	17'4" x 3'3"	83 sq. ft	Yes

6131 Carolina Trail, Bryant Heights, Hollins, Roanoke, Roanoke County, Virginia, United States, 24019

1 Floor 1 - Patio



Max Dimensions: 31'4" x 13'4"
Calculated Area: 419 sq. ft
Included: No

Heated: No
Finished: Yes
Enclosed: No
Contiguous: Yes
Permitted: Yes
Wet space: No
Addition: No
Conversion: No

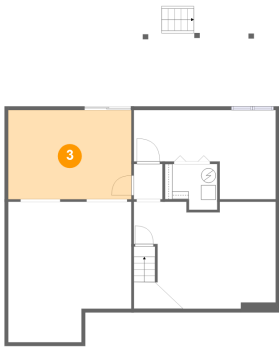
2 Floor 1 - Bedroom



Max Dimensions: 19'5" x 12'2"
Calculated Area: 175 sq. ft
Included: Yes

Heated: Yes
Finished: Yes
Enclosed: Yes
Contiguous: Yes
Permitted: Yes
Wet space: No
Addition: No
Conversion: No

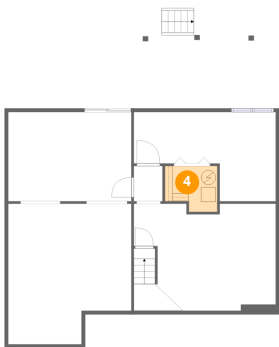
3 Floor 1 - Exercise Room



Max Dimensions: 16'10" x 12'2"
Calculated Area: 205 sq. ft
Included: Yes

Heated: Yes
Finished: Yes
Enclosed: Yes
Contiguous: Yes
Permitted: Yes
Wet space: No
Addition: No
Conversion: No

4 Floor 1 - W.I.C.



Max Dimensions: 7'2" x 6'3"
Calculated Area: 40 sq. ft
Included: Yes

Heated: Yes
Finished: Yes
Enclosed: Yes
Contiguous: Yes
Permitted: Yes
Wet space: No
Addition: No
Conversion: No

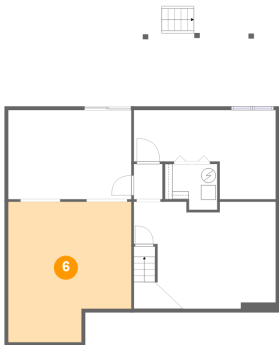
5 Floor 1 - Family Room



Max Dimensions: 19'5" x 14'7"
Calculated Area: 270 sq. ft
Included: Yes

Heated: Yes
Finished: Yes
Enclosed: Yes
Contiguous: Yes
Permitted: Yes
Wet space: No
Addition: No
Conversion: No

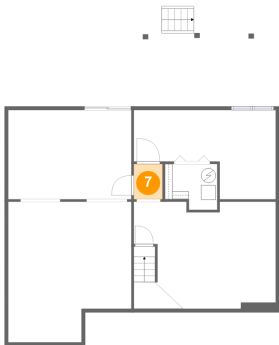
6 Floor 1 - Storage



Max Dimensions: 16'10" x 19'2"
Calculated Area: 291 sq. ft
Included: No

Heated: No
Finished: No
Enclosed: No
Contiguous: Yes
Permitted: Yes
Wet space: No
Addition: No
Conversion: No

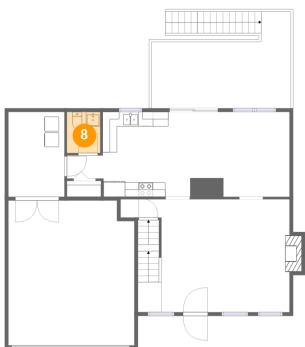
7 Floor 1 - Hall



Max Dimensions: 3'11" x 4'10"
Calculated Area: 19 sq. ft
Included: Yes

Heated: Yes
Finished: Yes
Enclosed: Yes
Contiguous: Yes
Permitted: Yes
Wet space: No
Addition: No
Conversion: No

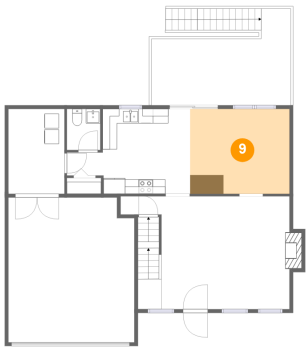
8 Floor 2 - WC



Max Dimensions: 4'7" x 5'8"
Calculated Area: 26 sq. ft
Included: Yes

Heated: Yes
Finished: Yes
Enclosed: Yes
Contiguous: Yes
Permitted: Yes
Wet space: Yes
Addition: No
Conversion: No

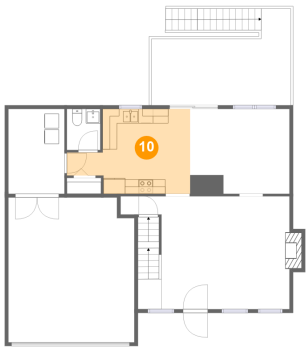
9 Floor 2 - Dining Area



Max Dimensions: 13'9" x 11'8"
Calculated Area: 161 sq. ft
Included: Yes

Heated: Yes
Finished: Yes
Enclosed: Yes
Contiguous: Yes
Permitted: Yes
Wet space: No
Addition: No
Conversion: No

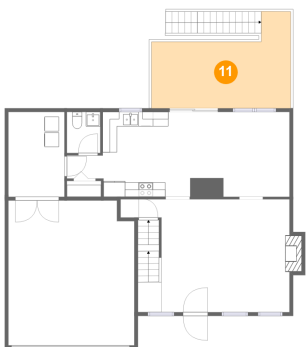
10 Floor 2 - Kitchen



Max Dimensions: 17'0" x 11'9"
Calculated Area: 157 sq. ft
Included: Yes

Heated: Yes
Finished: Yes
Enclosed: Yes
Contiguous: Yes
Permitted: Yes
Wet space: No
Addition: No
Conversion: No

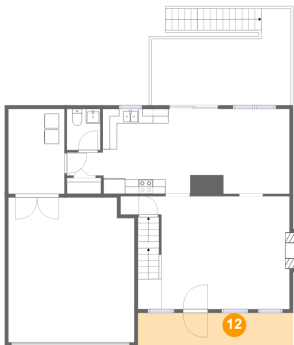
11 Floor 2 - Deck



Max Dimensions: 19'2" x 13'4"
Calculated Area: 193 sq. ft
Included: No

Heated: No
Finished: Yes
Enclosed: No
Contiguous: Yes
Permitted: Yes
Wet space: No
Addition: No
Conversion: No

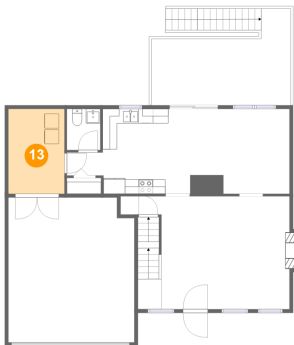
12 Floor 2 - Porch



Max Dimensions: 21'5" x 4'6"
Calculated Area: 98 sq. ft
Included: No

Heated: No
Finished: Yes
Enclosed: No
Contiguous: Yes
Permitted: Yes
Wet space: No
Addition: No
Conversion: No

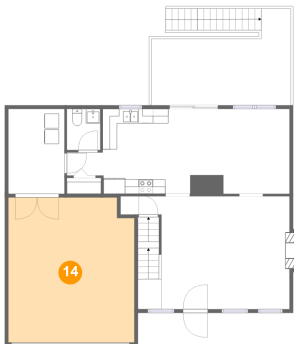
13 Floor 2 - Laundry



Max Dimensions: 7'9" x 11'9"
Calculated Area: 91 sq. ft
Included: Yes

Heated: Yes
Finished: Yes
Enclosed: Yes
Contiguous: Yes
Permitted: Yes
Wet space: No
Addition: No
Conversion: No

14 Floor 2 - Garage

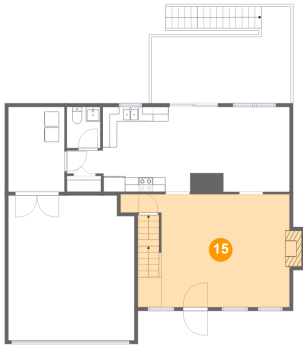


Max Dimensions: 17'5" x 20'0"
Calculated Area: 341 sq. ft
Included: No

Heated: No
Finished: No
Enclosed: Yes
Contiguous: Yes
Permitted: Yes
Wet space: No
Addition: No
Conversion: No

6131 Carolina Trail, Bryant Heights, Hollins, Roanoke, Roanoke County, Virginia, United States, 24019

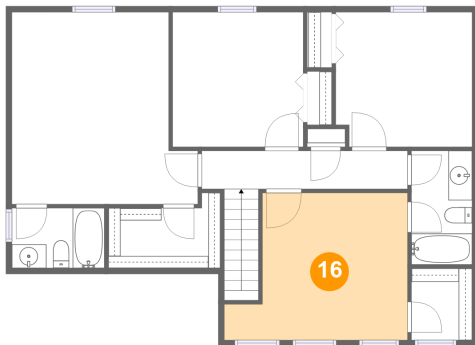
15 Floor 2 - Living Room



Max Dimensions: 23'4" x 15'7"
Calculated Area: 337 sq. ft
Included: Yes

Heated: Yes
Finished: Yes
Enclosed: Yes
Contiguous: Yes
Permitted: Yes
Wet space: No
Addition: No
Conversion: No

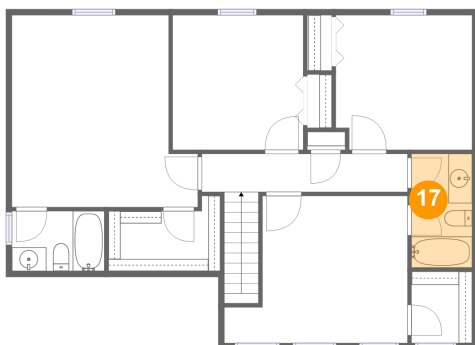
16 Floor 3 - Bedroom



Max Dimensions: 15'5" x 12'5"
Calculated Area: 161 sq. ft
Included: Yes

Heated: Yes
Finished: Yes
Enclosed: Yes
Contiguous: Yes
Permitted: Yes
Wet space: No
Addition: No
Conversion: No

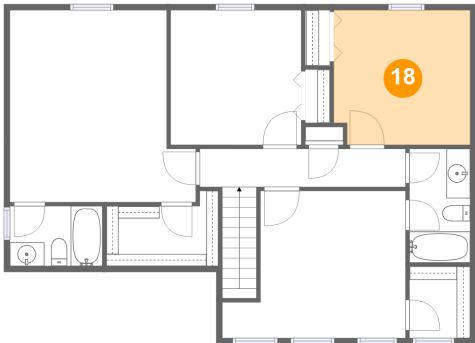
17 Floor 3 - Bath



Max Dimensions: 5'1" x 9'7"
Calculated Area: 49 sq. ft
Included: Yes

Heated: Yes
Finished: Yes
Enclosed: Yes
Contiguous: Yes
Permitted: Yes
Wet space: Yes
Addition: No
Conversion: No

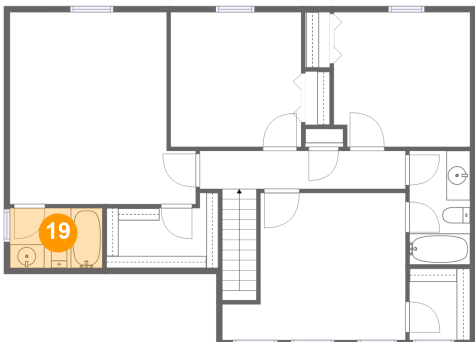
18 Floor 3 - Bedroom



Max Dimensions: 11'6" x 11'4"
Calculated Area: 128 sq. ft
Included: Yes

Heated: Yes
Finished: Yes
Enclosed: Yes
Contiguous: Yes
Permitted: Yes
Wet space: No
Addition: No
Conversion: No

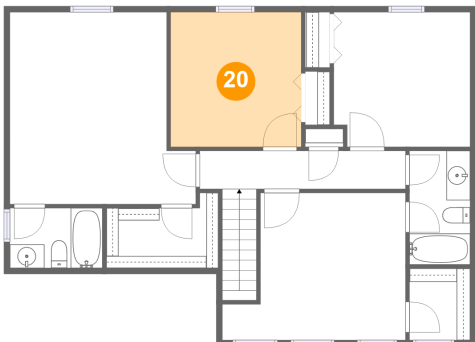
19 Floor 3 - Bath



Max Dimensions: 7'10" x 5'1"
Calculated Area: 39 sq. ft
Included: Yes

Heated: Yes
Finished: Yes
Enclosed: Yes
Contiguous: Yes
Permitted: Yes
Wet space: Yes
Addition: No
Conversion: No

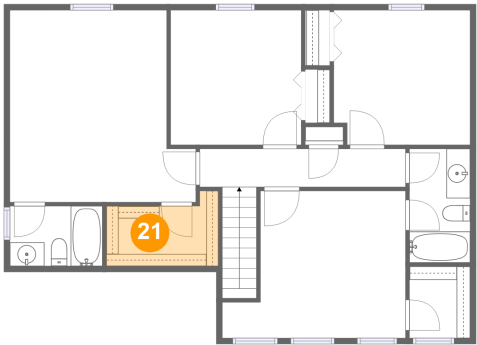
20 Floor 3 - Bedroom



Max Dimensions: 11'0" x 11'4"
Calculated Area: 125 sq. ft
Included: Yes

Heated: Yes
Finished: Yes
Enclosed: Yes
Contiguous: Yes
Permitted: Yes
Wet space: No
Addition: No
Conversion: No

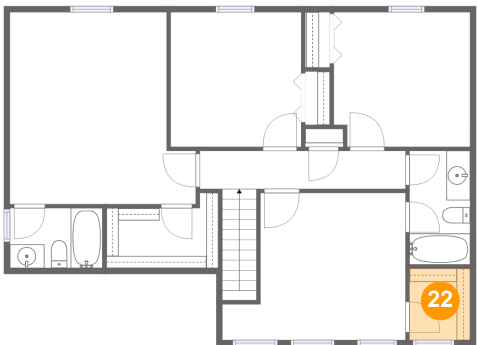
21 Floor 3 - W.I.C.



Max Dimensions: 9'5" x 6'4"
Calculated Area: 50 sq. ft
Included: Yes

Heated: Yes
Finished: Yes
Enclosed: Yes
Contiguous: Yes
Permitted: Yes
Wet space: No
Addition: No
Conversion: No

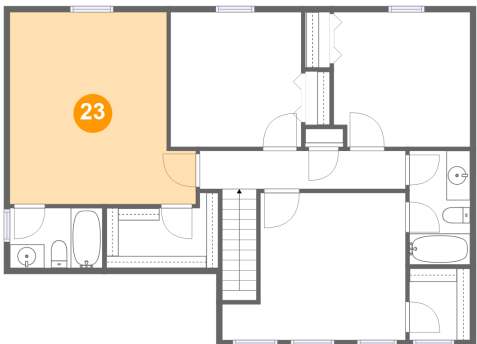
22 Floor 3 - W.I.C.



Max Dimensions: 5'1" x 6'0"
Calculated Area: 31 sq. ft
Included: Yes

Heated: Yes
Finished: Yes
Enclosed: Yes
Contiguous: Yes
Permitted: Yes
Wet space: No
Addition: No
Conversion: No

23 Floor 3 - Primary Bedroom

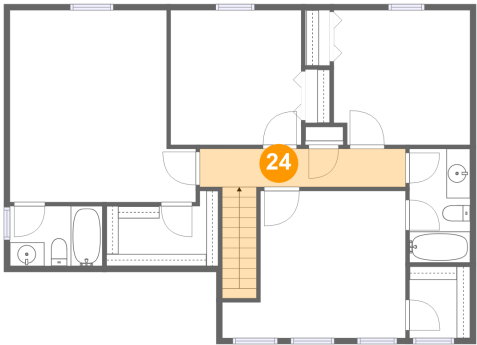


Max Dimensions: 15'8" x 16'2"
Calculated Area: 225 sq. ft
Included: Yes

Heated: Yes
Finished: Yes
Enclosed: Yes
Contiguous: Yes
Permitted: Yes
Wet space: No
Addition: No
Conversion: No

6131 Carolina Trail, Bryant Heights, Hollins, Roanoke, Roanoke County, Virginia, United States, 24019

24 Floor 3 - Hall



Max Dimensions: 17'4" x 3'3"
Calculated Area: 83 sq. ft
Included: Yes

Heated: Yes
Finished: Yes
Enclosed: Yes
Contiguous: Yes
Permitted: Yes
Wet space: No
Addition: No
Conversion: No