

# 1103 Clerihue Rd

Port Coquitlam, BC V3C 6H2

Lower Level Area: 913 SQ.FT.

Main Level Area: 841 SQ.FT.

Upper Level Area: 205 SQ.FT.

**Total Area 1,959 SQ.FT.**

Garage Area: 480 SQ.FT.

3



BEDROOMS

3

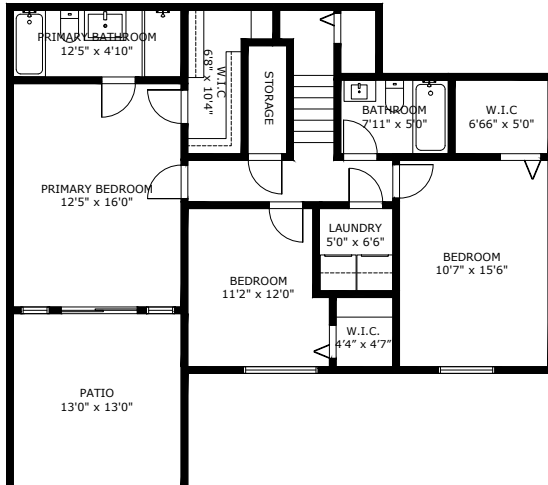


BATHROOMS

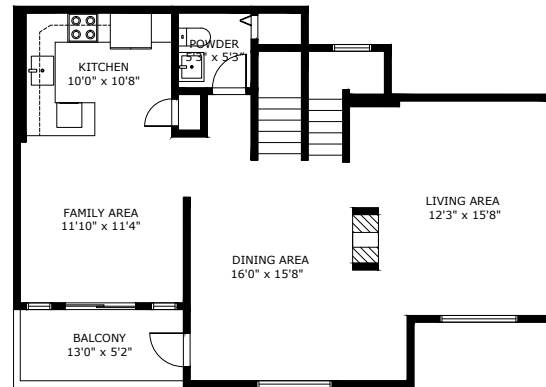
1,959



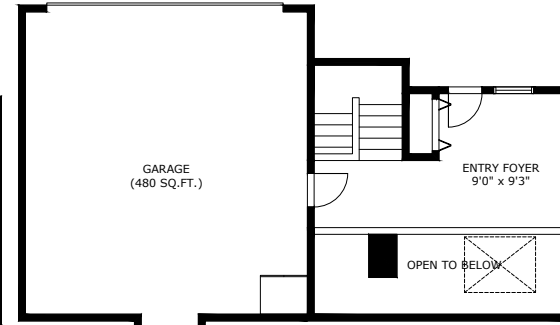
TOTAL SQ.FT.



Lower Level Area:  
Ceiling Height: 8'0"



Main Level Area:  
Ceiling Height: 8'0"-14'0"



Upper Level Area:  
Ceiling Height: 8'0"-10'5"

## 1103 CLERIHUE RD, PORT COQUITLAM BC V3C 6H2

Measurements are approximate and may not be to scale. Gross measurements provided by agent.  
The floor plan illustration is not suitable for construction/architectural purposes.  
This communication is not intended to cause or induce breach of an existing agency agreement

**3D IMMERSIVE**  
Tours Photos Floor Plans

Professionally measured by 3D Immersive Marketing Ltd.  
Lead Floor Planner: *Simon Alexander*  
Quality Assurance: *Francine Graham*