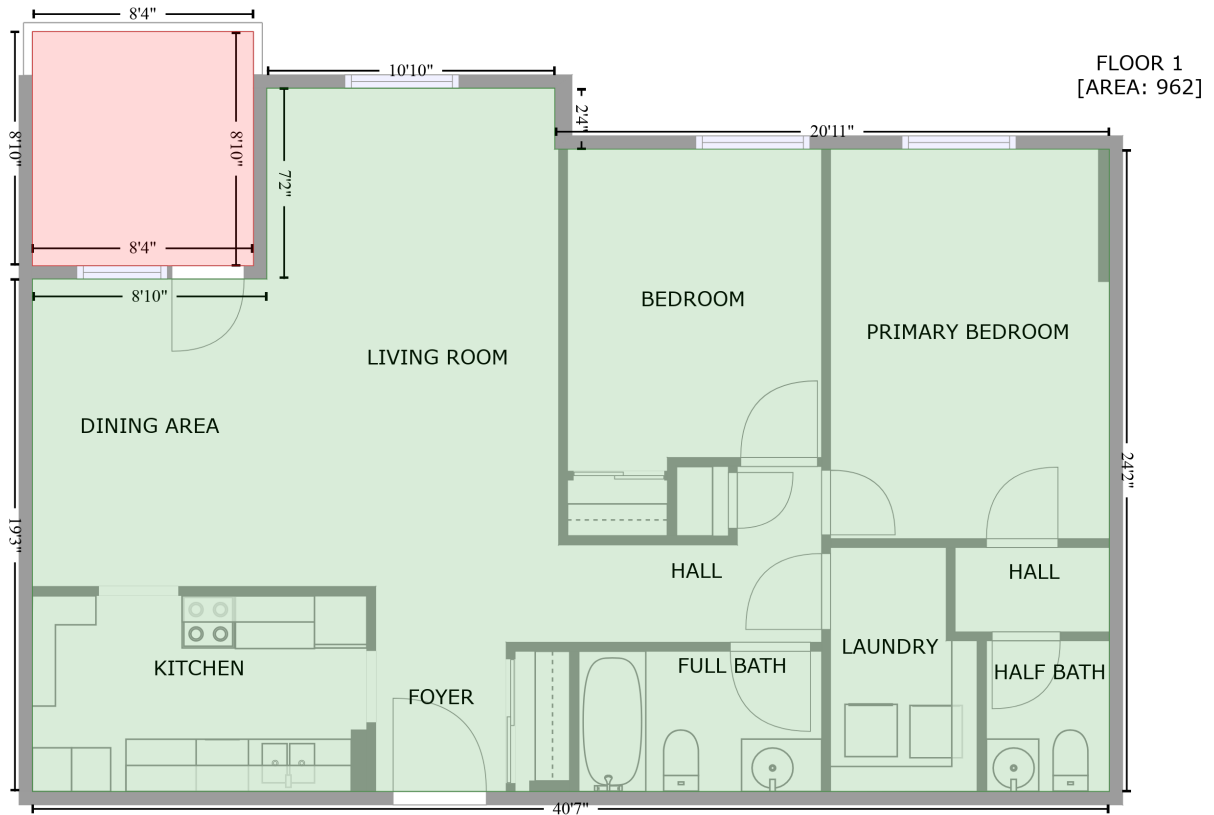


2835 Islington Ave, Unit 508, North York, ON, CA, Unit 508

Gross Living Area: 962 sq. ft

BALCONY (1)
[AREA: 73]



Space	Area (sq. ft)	Calculation <small>Coordinate Polygon Area Algorithm using inches</small>
FLOOR 1 (Living area)	962	$-((247.5 + 247.5) * (62.2 - 89.8) + (247.5 + 498) * (89.8 - 89.8) + (498 + 498) * (89.8 - 379.9) + (498 + 11.4) * (379.9 - 379.9) + (11.4 + 11.4) * (379.9 - 148.4) + (11.4 + 117.3) * (148.4 - 148.4) + (117.3 + 117.3) * (148.4 - 62.2) + (117.3 + 247.5) * (62.2 - 62.2)) * 0.5 * 0.00694$
BALCONY (Non-living area)	73	$-((111.3 + 111.3) * (36.6 - 142.4) + (111.3 + 11.4) * (142.4 - 142.4) + (11.4 + 11.4) * (142.4 - 36.6) + (11.4 + 111.3) * (36.6 - 36.6)) * 0.5 * 0.00694$