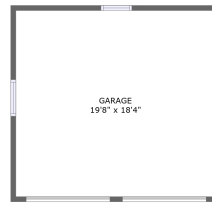



Home report


1257 Glenwood Drive, Sharon, Mercer County,
Pennsylvania, United States, 16146



Property summary

 **1** Garages

 **3** Bedrooms

 **1** Bathrooms

 **0** Half baths

 **3** Floors

 **1,520**
Gross living
area sqft

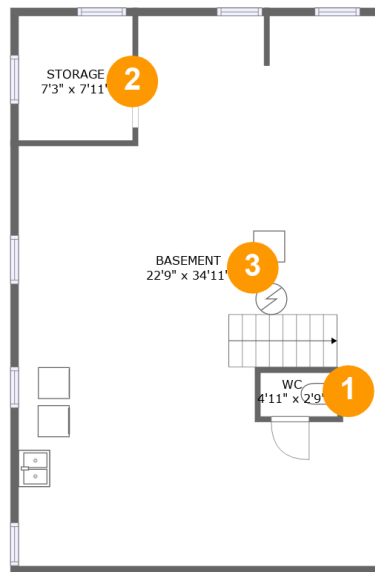
 **3,116**
Total sqft

Scan captured on Thu, 27 Mar 2025 13:41:25 GMT

Information is calculated by Cubicasa technology deemed highly reliable but not guaranteed.

Home report

1257 Glenwood Drive, Sharon, Mercer County,
Pennsylvania, United States, 16146



Room dimensions

Floor 1

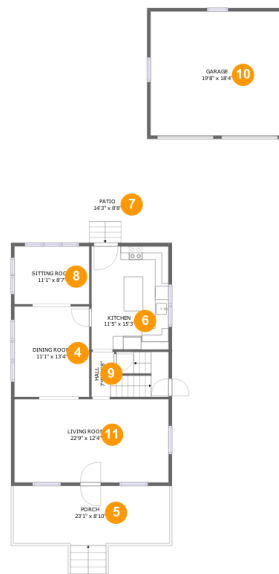
Total sqft: 853

Living area: 0

#		Dimensions	sqft	Counted as living area
1	WC	4'11" x 2'9"	14 sq. ft	No
2	Storage	7'3" x 7'11"	57 sq. ft	No
3	Basement	22'9" x 34'11"	731 sq. ft	No

Home report

1257 Glenwood Drive, Sharon, Mercer County,
Pennsylvania, United States, 16146



Room dimensions

Floor 2

Total sqft: 1596 Living area: 853

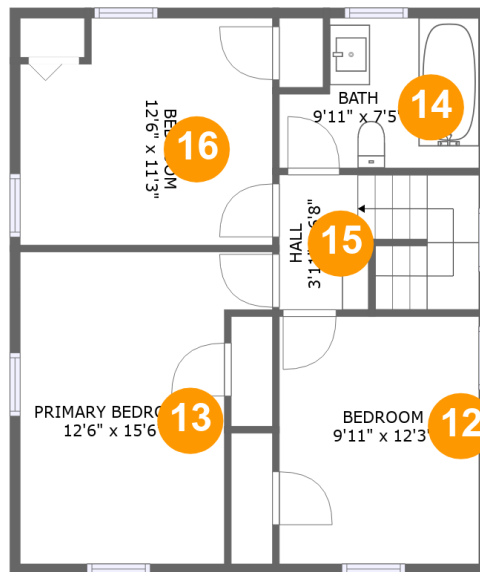
#		Dimensions	sqft	Counted as living area
4	Dining Room	11'1" x 13'4"	147 sq. ft	Yes
5	Porch	23'1" x 8'10"	220 sq. ft	No
6	Kitchen	11'5" x 15'3"	174 sq. ft	Yes
7	Patio	14'3" x 8'8"	124 sq. ft	No
8	Sitting Room	11'1" x 8'7"	95 sq. ft	Yes
9	Hall	7'9" x 6'8"	73 sq. ft	Yes
10	Garage	19'8" x 18'4"	360 sq. ft	No
11	Living Room	22'9" x 12'4"	280 sq. ft	Yes

Scan captured on Thu, 27 Mar 2025 13:41:25 GMT

Information is calculated by Cubicasa technology deemed highly reliable but not guaranteed.

Home report

1257 Glenwood Drive, Sharon, Mercer County,
Pennsylvania, United States, 16146



Room dimensions

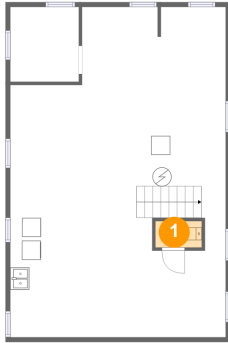
Floor 3

Total sqft: 667

Living area: 667

#		Dimensions	sqft	Counted as living area
12	Bedroom	9'11" x 12'3"	122 sq. ft	Yes
13	Primary Bedroom	12'6" x 15'6"	164 sq. ft	Yes
14	Bath	9'11" x 7'5"	64 sq. ft	Yes
15	Hall	3'11" x 6'8"	64 sq. ft	Yes
16	Bedroom	12'6" x 11'3"	133 sq. ft	Yes

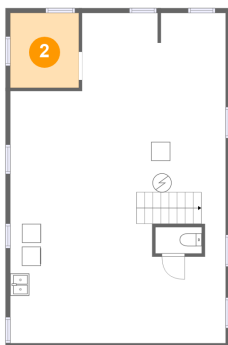
1 Floor 1 - WC



Dimensions: 4'11" x 2'9"
Area: 14 sq. ft
Counted as living area: No

Heated: No
Finished: No
Enclosed: Yes
Contiguous: Yes
Permitted: Yes
Wet space: No
Addition: No
Conversion: No

2 Floor 1 - Storage



Dimensions: 7'3" x 7'11"
Area: 57 sq. ft
Counted as living area: No

Heated: No
Finished: No
Enclosed: No
Contiguous: Yes
Permitted: Yes
Wet space: No
Addition: No
Conversion: No

3 Floor 1 - Basement



Dimensions: 22'9" x 34'11"
Area: 731 sq. ft
Counted as living area: No

Heated: No
Finished: No
Enclosed: Yes
Contiguous: Yes
Permitted: Yes
Wet space: No
Addition: No
Conversion: No

4 Floor 2 - Dining Room



Dimensions: 11'1" x 13'4"
Area: 147 sq. ft
Counted as living area: Yes

Heated: Yes
Finished: Yes
Enclosed: Yes
Contiguous: Yes
Permitted: Yes
Wet space: No
Addition: No
Conversion: No

5 Floor 2 - Porch



Dimensions: 23'1" x 8'10"
Area: 220 sq. ft
Counted as living area: No

Heated: No
Finished: Yes
Enclosed: No
Contiguous: Yes
Permitted: Yes
Wet space: No
Addition: No
Conversion: No

6 Floor 2 - Kitchen



Dimensions: 11'5" x 15'3"
Area: 174 sq. ft
Counted as living area: Yes

Heated: Yes
Finished: Yes
Enclosed: Yes
Contiguous: Yes
Permitted: Yes
Wet space: No
Addition: No
Conversion: No

7 Floor 2 - Patio



Dimensions: 14'3" x 8'8"
Area: 124 sq. ft
Counted as living area: No

Heated: No
Finished: Yes
Enclosed: No
Contiguous: Yes
Permitted: Yes
Wet space: No
Addition: No
Conversion: No

8 Floor 2 - Sitting Room



Dimensions: 11'1" x 8'7"
Area: 95 sq. ft
Counted as living area: Yes

Heated: Yes
Finished: Yes
Enclosed: Yes
Contiguous: Yes
Permitted: Yes
Wet space: No
Addition: No
Conversion: No

9 Floor 2 - Hall



Dimensions: 7'9" x 6'8"
Area: 73 sq. ft
Counted as living area: Yes

Heated: Yes
Finished: Yes
Enclosed: Yes
Contiguous: Yes
Permitted: Yes
Wet space: No
Addition: No
Conversion: No

10 Floor 2 - Garage



Dimensions: 19'8" x 18'4"
Area: 360 sq. ft
Counted as living area: No

Heated: No
Finished: No
Enclosed: Yes
Contiguous: Yes
Permitted: Yes
Wet space: No
Addition: No
Conversion: No

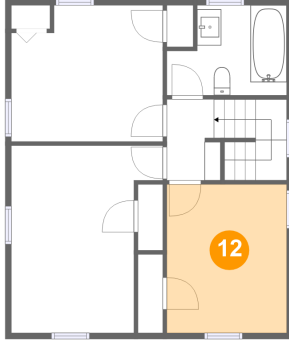
11 Floor 2 - Living Room



Dimensions: 22'9" x 12'4"
Area: 280 sq. ft
Counted as living area: Yes

Heated: Yes
Finished: Yes
Enclosed: Yes
Contiguous: Yes
Permitted: Yes
Wet space: No
Addition: No
Conversion: No

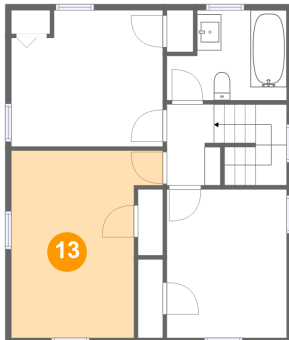
12 Floor 3 - Bedroom



Dimensions: 9'11" x 12'3"
Area: 122 sq. ft
Counted as living area: Yes

Heated: Yes
Finished: Yes
Enclosed: Yes
Contiguous: Yes
Permitted: Yes
Wet space: No
Addition: No
Conversion: No

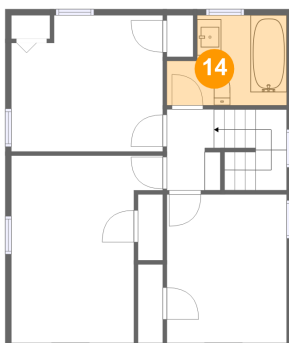
13 Floor 3 - Primary Bedroom



Dimensions: 12'6" x 15'6"
Area: 164 sq. ft
Counted as living area: Yes

Heated: Yes
Finished: Yes
Enclosed: Yes
Contiguous: Yes
Permitted: Yes
Wet space: No
Addition: No
Conversion: No

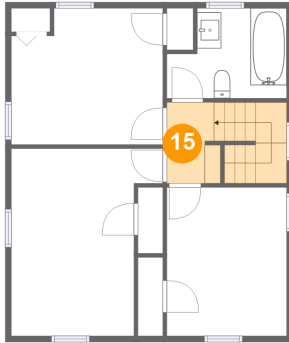
14 Floor 3 - Bath



Dimensions: 9'11" x 7'5"
Area: 64 sq. ft
Counted as living area: Yes

Heated: Yes
Finished: Yes
Enclosed: Yes
Contiguous: Yes
Permitted: Yes
Wet space: Yes
Addition: No
Conversion: No

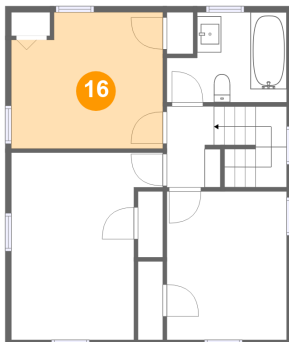
15 Floor 3 - Hall



Dimensions: 3'11" x 6'8"
Area: 64 sq. ft
Counted as living area: Yes

Heated: Yes
Finished: Yes
Enclosed: Yes
Contiguous: Yes
Permitted: Yes
Wet space: No
Addition: No
Conversion: No

16 Floor 3 - Bedroom



Dimensions: 12'6" x 11'3"
Area: 133 sq. ft
Counted as living area: Yes

Heated: Yes
Finished: Yes
Enclosed: Yes
Contiguous: Yes
Permitted: Yes
Wet space: No
Addition: No
Conversion: No