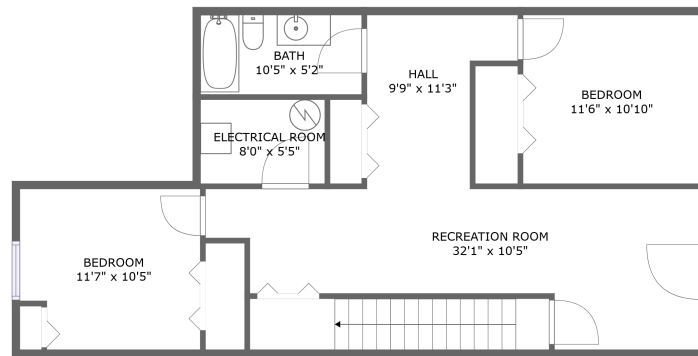
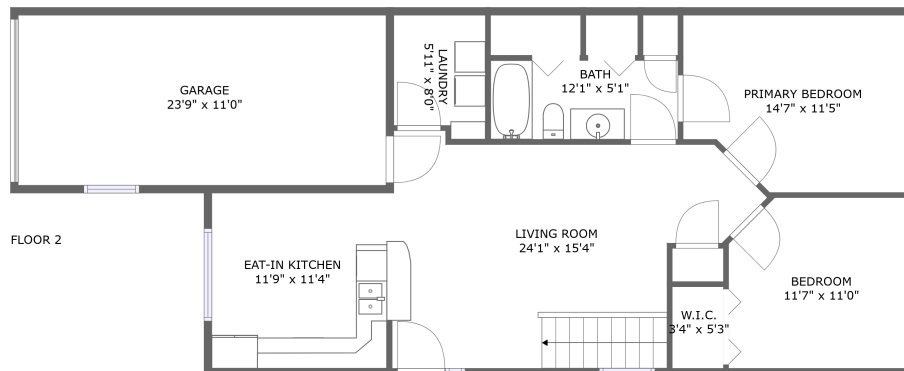




3018 10th Ave, Spearfish, SD, US



Property summary

 **1** Garages

 **4** Bedrooms

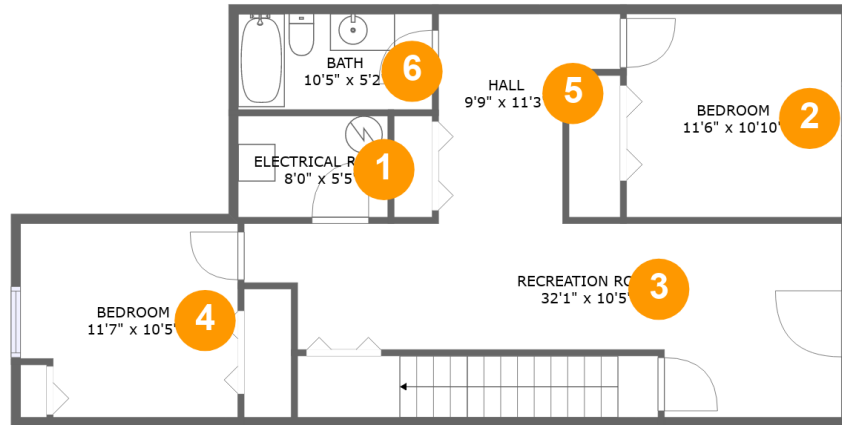
 **2** Bathrooms

 **0** Half baths

 **2** Floors

 **1,805** Gross living area sqft

 **2,137** Total sqft

3018 10th Ave, Spearfish, SD, US

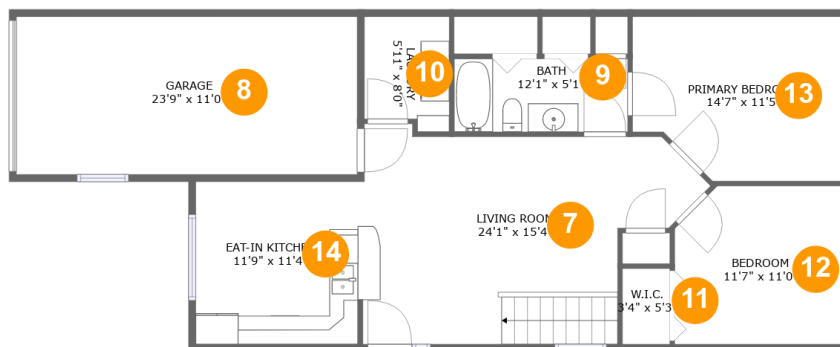
Room dimensions

Floor 1

Total sqft: 889 Living area: 843

#		Dimensions	sqft	Counted as living area
1	Room	8'0" x 5'5"	44 sq. ft	No
2	Bedroom	11'6" x 10'10"	126 sq. ft	Yes
3	Recreation Room	32'1" x 10'5"	241 sq. ft	Yes
4	Bedroom	11'7" x 10'5"	116 sq. ft	Yes
5	Hall	9'9" x 11'3"	84 sq. ft	Yes
6	Bath	10'5" x 5'2"	54 sq. ft	Yes

3018 10th Ave, Spearfish, SD, US



Room dimensions

Floor 2

Total sqft: 1248 Living area: 962

#		Dimensions	sqft	Counted as living area
7	Living Room	24'1" x 15'4"	290 sq. ft	Yes
8	Garage	23'9" x 11'0"	261 sq. ft	No
9	Bath	12'1" x 5'1"	62 sq. ft	Yes
10	Utility	5'11" x 8'0"	44 sq. ft	Yes
11	Cl	3'4" x 5'3"	17 sq. ft	Yes
12	Bedroom	11'7" x 11'0"	124 sq. ft	Yes
13	Bedroom	14'7" x 11'5"	154 sq. ft	Yes
14	Kitchen	11'9" x 11'4"	132 sq. ft	Yes

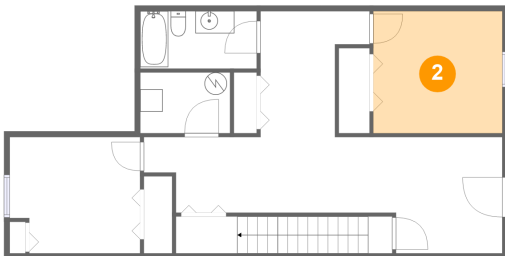
1 Floor 1 - Room



Dimensions: 8'0" x 5'5"
Area: 44 sq. ft
Counted as living area: No

Heated: No
Finished: No
Enclosed: Yes
Contiguous: Yes
Permitted: Yes
Wet space: No
Addition: No
Conversion: No

2 Floor 1 - Bedroom



Dimensions: 11'6" x 10'10"
Area: 126 sq. ft
Counted as living area: Yes

Heated: Yes
Finished: Yes
Enclosed: Yes
Contiguous: Yes
Permitted: Yes
Wet space: No
Addition: No
Conversion: No

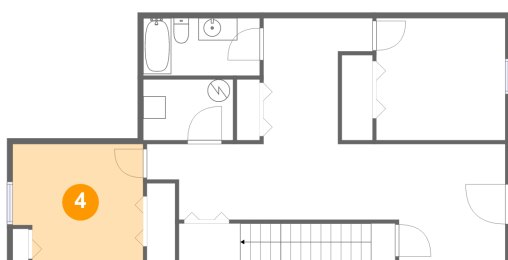
3 Floor 1 - Recreation Room



Dimensions: 32'1" x 10'5"
Area: 241 sq. ft
Counted as living area: Yes

Heated: Yes
Finished: Yes
Enclosed: Yes
Contiguous: Yes
Permitted: Yes
Wet space: No
Addition: No
Conversion: No

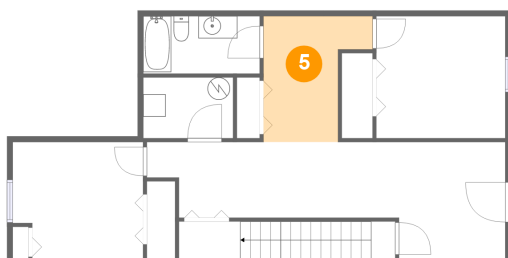
4 Floor 1 - Bedroom



Dimensions: 11'7" x 10'5"
Area: 116 sq. ft
Counted as living area: Yes

Heated: Yes
Finished: Yes
Enclosed: Yes
Contiguous: Yes
Permitted: Yes
Wet space: No
Addition: No
Conversion: No

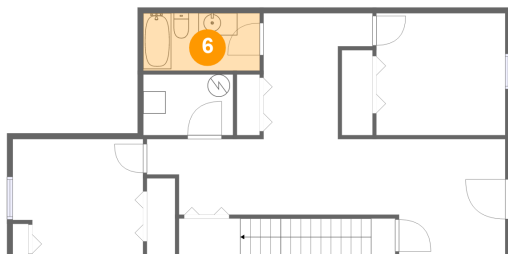
5 Floor 1 - Hall



Dimensions: 9'9" x 11'3"
Area: 84 sq. ft
Counted as living area: Yes

Heated: Yes
Finished: Yes
Enclosed: Yes
Contiguous: Yes
Permitted: Yes
Wet space: No
Addition: No
Conversion: No

6 Floor 1 - Bath



Dimensions: 10'5" x 5'2"
Area: 54 sq. ft
Counted as living area: Yes

Heated: Yes
Finished: Yes
Enclosed: Yes
Contiguous: Yes
Permitted: Yes
Wet space: Yes
Addition: No
Conversion: No

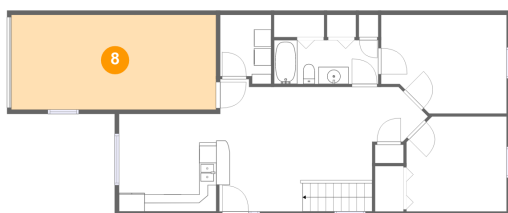
7 Floor 2 - Living Room



Dimensions: 24'1" x 15'4"
Area: 290 sq. ft
Counted as living area: Yes

Heated: Yes
Finished: Yes
Enclosed: Yes
Contiguous: Yes
Permitted: Yes
Wet space: No
Addition: No
Conversion: No

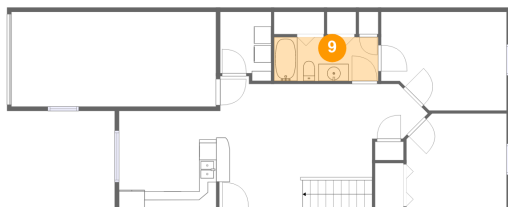
8 Floor 2 - Garage



Dimensions: 23'9" x 11'0"
Area: 261 sq. ft
Counted as living area: No

Heated: No
Finished: No
Enclosed: Yes
Contiguous: Yes
Permitted: Yes
Wet space: No
Addition: No
Conversion: No

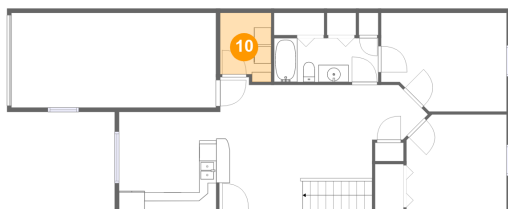
9 Floor 2 - Bath



Dimensions: 12'1" x 5'1"
Area: 62 sq. ft
Counted as living area: Yes

Heated: Yes
Finished: Yes
Enclosed: Yes
Contiguous: Yes
Permitted: Yes
Wet space: Yes
Addition: No
Conversion: No

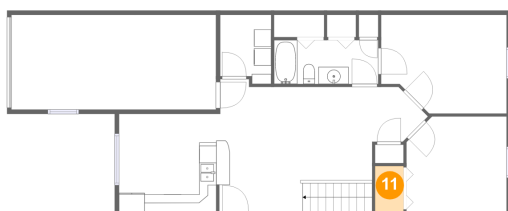
10 Floor 2 - Utility



Dimensions: 5'11" x 8'0"
Area: 44 sq. ft
Counted as living area: Yes

Heated: Yes
Finished: Yes
Enclosed: Yes
Contiguous: Yes
Permitted: Yes
Wet space: No
Addition: No
Conversion: No

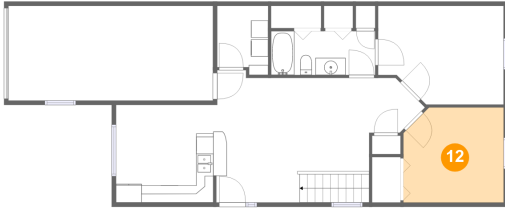
11 Floor 2 - Cl



Dimensions: 3'4" x 5'3"
Area: 17 sq. ft
Counted as living area: Yes

Heated: Yes
Finished: Yes
Enclosed: Yes
Contiguous: Yes
Permitted: Yes
Wet space: No
Addition: No
Conversion: No

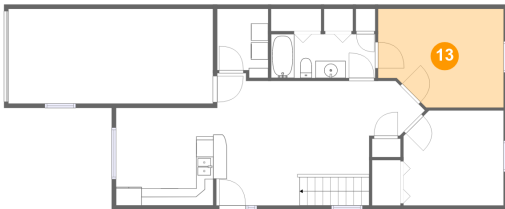
12 Floor 2 - Bedroom



Dimensions: 11'7" x 11'0"
Area: 124 sq. ft
Counted as living area: Yes

Heated: Yes
Finished: Yes
Enclosed: Yes
Contiguous: Yes
Permitted: Yes
Wet space: No
Addition: No
Conversion: No

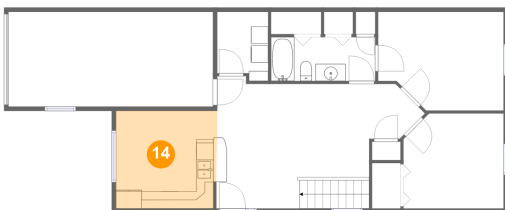
13 Floor 2 - Bedroom



Dimensions: 14'7" x 11'5"
Area: 154 sq. ft
Counted as living area: Yes

Heated: Yes
Finished: Yes
Enclosed: Yes
Contiguous: Yes
Permitted: Yes
Wet space: No
Addition: No
Conversion: No

14 Floor 2 - Kitchen



Dimensions: 11'9" x 11'4"
Area: 132 sq. ft
Counted as living area: Yes

Heated: Yes
Finished: Yes
Enclosed: Yes
Contiguous: Yes
Permitted: Yes
Wet space: No
Addition: No
Conversion: No