


# 2001 Palm Key Ave, Oldsmar, Pinellas County, Florida, United States, 34677



## Property Summary

 **1** garages     **3** bedrooms     **2** bathrooms     **1** half baths

 **2** floors

 **1,916** Gross Living Area sqft

 **2,602** total sqft

**2001 Palm Key Ave, Oldsmar, Pinellas County, Florida, United States, 34677**



**Room Dimensions**

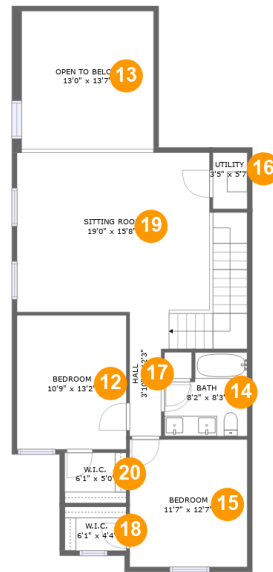
Floor 1

Total sqft: 1486

Living area: 1004

#	Room name	Dimensions	Area (sqft)	Counted as Living Area
1	Foyer	5'7" x 7'2"	36 sq. ft	Yes
2	Bath	9'3" x 7'11"	73 sq. ft	Yes
3	Dining Area	13'2" x 7'5"	97 sq. ft	Yes
4	Kitchen	19'0" x 13'7"	243 sq. ft	Yes
5	Screened Porch	9'0" x 11'9"	106 sq. ft	No
6	W.i.c.	5'6" x 7'1"	39 sq. ft	Yes
7	Pantry	7'11" x 7'7"	43 sq. ft	Yes
8	Primary Bedroom	13'2" x 12'10"	166 sq. ft	Yes
9	Wc	9'3" x 2'11"	32 sq. ft	Yes
10	Garage	18'0" x 19'3"	344 sq. ft	No
11	Living Room	13'2" x 12'5"	163 sq. ft	Yes

**2001 Palm Key Ave, Oldsmar, Pinellas County, Florida, United States, 34677**



**Room Dimensions**

**Floor 2**

**Total sqft: 1116**

**Living area: 912**

#	Room name	Dimensions	Area (sqft)	Counted as Living Area
12	Bedroom	10'9" x 13'2"	142 sq. ft	Yes
13	Open To Below	13'0" x 13'7"	177 sq. ft	No
14	Bath	8'2" x 8'3"	58 sq. ft	Yes
15	Bedroom	11'7" x 12'7"	145 sq. ft	Yes
16	Utility	3'5" x 5'7"	19 sq. ft	Yes
17	Hall	3'10" x 12'3"	69 sq. ft	Yes
18	W.i.c.	6'1" x 4'4"	26 sq. ft	Yes
19	Sitting Room	19'0" x 15'8"	338 sq. ft	Yes
20	W.i.c.	6'1" x 5'0"	30 sq. ft	Yes

# 2001 Palm Key Ave, Oldsmar, Pinellas County, Florida, United States, 34677

## 1 Floor 1 - Foyer



Dimensions: 5'7" x 7'2"  
Area: 36 sq. ft  
Counted as Living Area:  
Yes

Heated: Yes  
Finished: Yes  
Enclosed: Yes  
Contiguous:  
Yes  
Permitted: Yes  
Wet Space: No  
Addition: No  
Conversion: No

## 2 Floor 1 - Bath



Dimensions: 9'3" x 7'11"  
Area: 73 sq. ft  
Counted as Living Area:  
Yes

Heated: Yes  
Finished: Yes  
Enclosed: Yes  
Contiguous:  
Yes  
Permitted: Yes  
Wet Space: Yes  
Addition: No  
Conversion: No

# 2001 Palm Key Ave, Oldsmar, Pinellas County, Florida, United States, 34677

## 3 Floor 1 - Dining Area



Dimensions: 13'2" x 7'5"  
Area: 97 sq. ft  
Counted as Living Area:  
Yes

Heated: Yes  
Finished: Yes  
Enclosed: Yes  
Contiguous:  
Yes  
Permitted: Yes  
Wet Space: No  
Addition: No  
Conversion: No

## 4 Floor 1 - Kitchen



Dimensions: 19'0" x 13'7"  
Area: 243 sq. ft  
Counted as Living Area:  
Yes

Heated: Yes  
Finished: Yes  
Enclosed: Yes  
Contiguous:  
Yes  
Permitted: Yes  
Wet Space: No  
Addition: No  
Conversion: No

## 5 Floor 1 - Screened Porch



Dimensions: 9'0" x 11'9"  
Area: 106 sq. ft  
Counted as Living Area: No

Heated: No  
Finished: Yes  
Enclosed: No  
Contiguous: Yes  
Permitted: Yes  
Wet Space: No  
Addition: No  
Conversion: No

# 2001 Palm Key Ave, Oldsmar, Pinellas County, Florida, United States, 34677

## 6 Floor 1 - W.i.c.



Dimensions: 5'6" x 7'1"  
Area: 39 sq. ft  
Counted as Living Area:  
Yes

Heated: Yes  
Finished: Yes  
Enclosed: Yes  
Contiguous:  
Yes  
Permitted: Yes  
Wet Space: No  
Addition: No  
Conversion: No

## 7 Floor 1 - Pantry



Dimensions: 7'11" x 7'7"  
Area: 43 sq. ft  
Counted as Living Area:  
Yes

Heated: Yes  
Finished: Yes  
Enclosed: Yes  
Contiguous:  
Yes  
Permitted: Yes  
Wet Space: No  
Addition: No  
Conversion: No

## 8 Floor 1 - Primary Bedroom



Dimensions: 13'2" x 12'10"  
Area: 166 sq. ft  
Counted as Living Area:  
Yes

Heated: Yes  
Finished: Yes  
Enclosed: Yes  
Contiguous:  
Yes  
Permitted: Yes  
Wet Space: No  
Addition: No  
Conversion: No

**2001 Palm Key Ave, Oldsmar, Pinellas County,  
Florida, United States, 34677**

**9 Floor 1 - Wc**



**Dimensions:** 9'3" x 2'11"  
**Area:** 32 sq. ft  
**Counted as Living Area:**  
Yes

**Heated:** Yes  
**Finished:** Yes  
**Enclosed:** Yes  
**Contiguous:**  
Yes  
**Permitted:** Yes  
**Wet Space:** Yes  
**Addition:** No  
**Conversion:** No

**10 Floor 1 - Garage**



**Dimensions:** 18'0" x 19'3"  
**Area:** 344 sq. ft  
**Counted as Living Area:** No

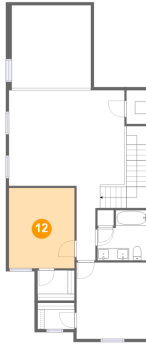
**Heated:** No  
**Finished:** No  
**Enclosed:** Yes  
**Contiguous:** Yes  
**Permitted:** Yes  
**Wet Space:** No  
**Addition:** No  
**Conversion:** No

**11 Floor 1 - Living Room**



**Dimensions:** 13'2" x 12'5"  
**Area:** 163 sq. ft  
**Counted as Living Area:**  
Yes

**Heated:** Yes  
**Finished:** Yes  
**Enclosed:** Yes  
**Contiguous:**  
Yes  
**Permitted:** Yes  
**Wet Space:** No  
**Addition:** No  
**Conversion:** No

**2001 Palm Key Ave, Oldsmar, Pinellas County,  
Florida, United States, 34677****12 Floor 2 - Bedroom**

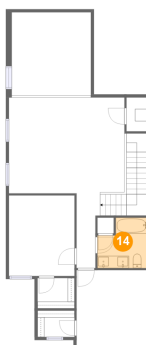
**Dimensions:** 10'9" x 13'2"  
**Area:** 142 sq. ft  
**Counted as Living Area:**  
Yes

**Heated:** Yes  
**Finished:** Yes  
**Enclosed:** Yes  
**Contiguous:**  
Yes  
**Permitted:** Yes  
**Wet Space:** No  
**Addition:** No  
**Conversion:** No

**13 Floor 2 - Open To Below**

**Dimensions:** 13'0" x 13'7"  
**Area:** 177 sq. ft  
**Counted as Living Area:** No

**Heated:** No  
**Finished:** No  
**Enclosed:** No  
**Contiguous:** Yes  
**Permitted:** No  
**Wet Space:** No  
**Addition:** No  
**Conversion:** No

**14 Floor 2 - Bath**

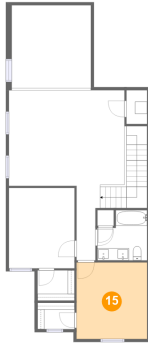
**Dimensions:** 8'2" x 8'3"  
**Area:** 58 sq. ft  
**Counted as Living Area:**  
Yes

**Heated:** Yes  
**Finished:** Yes  
**Enclosed:** Yes  
**Contiguous:**  
Yes  
**Permitted:** Yes  
**Wet Space:** Yes  
**Addition:** No  
**Conversion:** No



# 2001 Palm Key Ave, Oldsmar, Pinellas County, Florida, United States, 34677

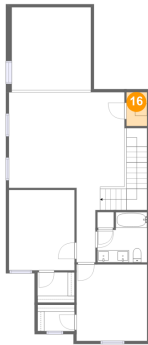
## 15 Floor 2 - Bedroom



Dimensions: 11'7" x 12'7"  
Area: 145 sq. ft  
Counted as Living Area:  
Yes

Heated: Yes  
Finished: Yes  
Enclosed: Yes  
Contiguous:  
Yes  
Permitted: Yes  
Wet Space: No  
Addition: No  
Conversion: No

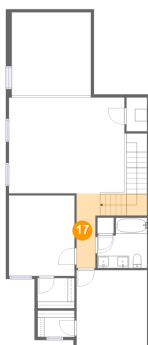
## 16 Floor 2 - Utility



Dimensions: 3'5" x 5'7"  
Area: 19 sq. ft  
Counted as Living Area:  
Yes

Heated: Yes  
Finished: Yes  
Enclosed: Yes  
Contiguous:  
Yes  
Permitted: Yes  
Wet Space: No  
Addition: No  
Conversion: No

## 17 Floor 2 - Hall



Dimensions: 3'10" x 12'3"  
Area: 69 sq. ft  
Counted as Living Area:  
Yes

Heated: Yes  
Finished: Yes  
Enclosed: Yes  
Contiguous:  
Yes  
Permitted: Yes  
Wet Space: No  
Addition: No  
Conversion: No

# 2001 Palm Key Ave, Oldsmar, Pinellas County, Florida, United States, 34677

## 18 Floor 2 - W.i.c.



Dimensions: 6'1" x 4'4"  
Area: 26 sq. ft  
Counted as Living Area:  
Yes

Heated: Yes  
Finished: Yes  
Enclosed: Yes  
Contiguous:  
Yes  
Permitted: Yes  
Wet Space: No  
Addition: No  
Conversion: No

## 19 Floor 2 - Sitting Room



Dimensions: 19'0" x 15'8"  
Area: 338 sq. ft  
Counted as Living Area:  
Yes

Heated: Yes  
Finished: Yes  
Enclosed: Yes  
Contiguous:  
Yes  
Permitted: Yes  
Wet Space: No  
Addition: No  
Conversion: No

## 20 Floor 2 - W.i.c.



Dimensions: 6'1" x 5'0"  
Area: 30 sq. ft  
Counted as Living Area:  
Yes

Heated: Yes  
Finished: Yes  
Enclosed: Yes  
Contiguous:  
Yes  
Permitted: Yes  
Wet Space: No  
Addition: No  
Conversion: No