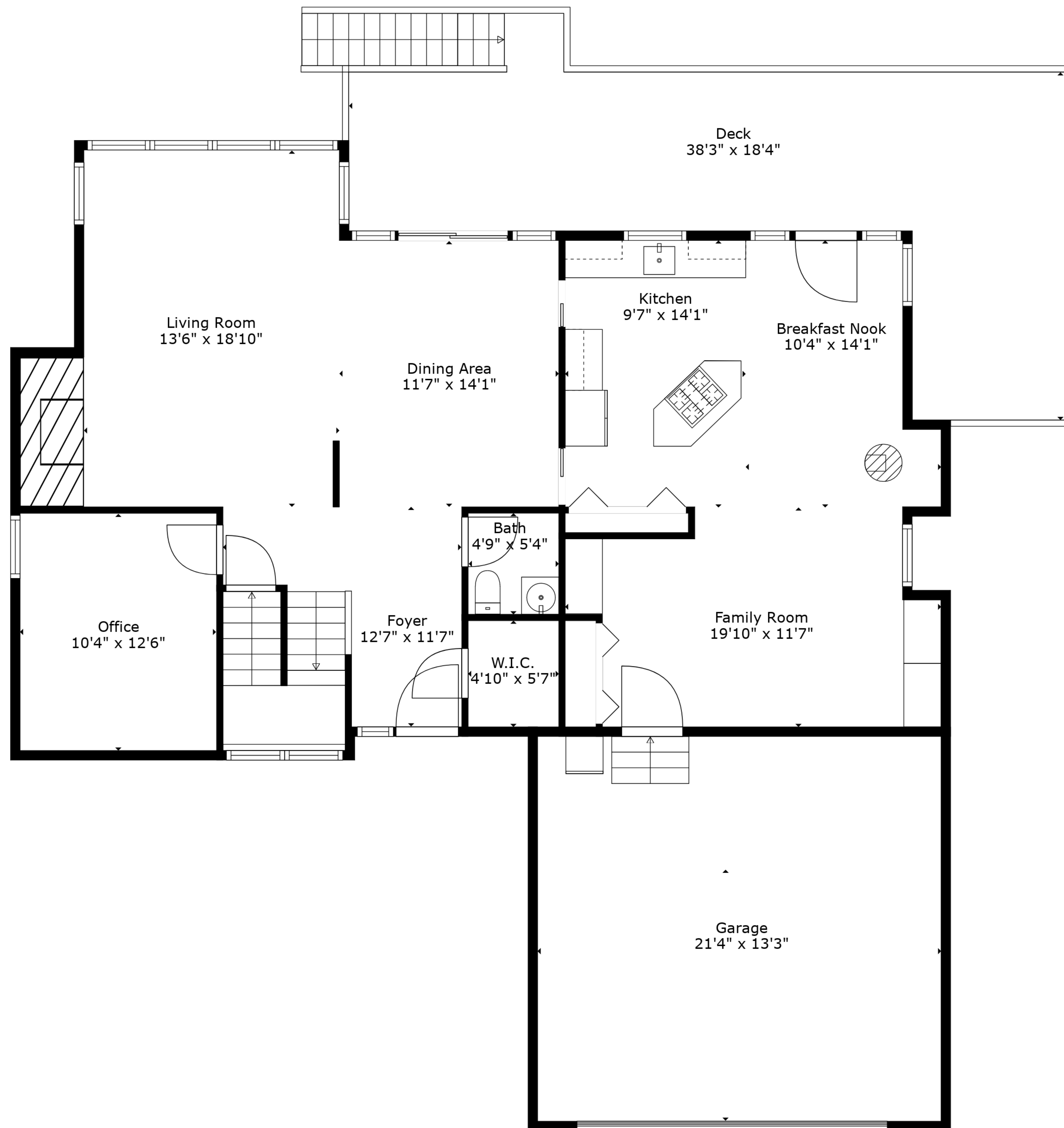


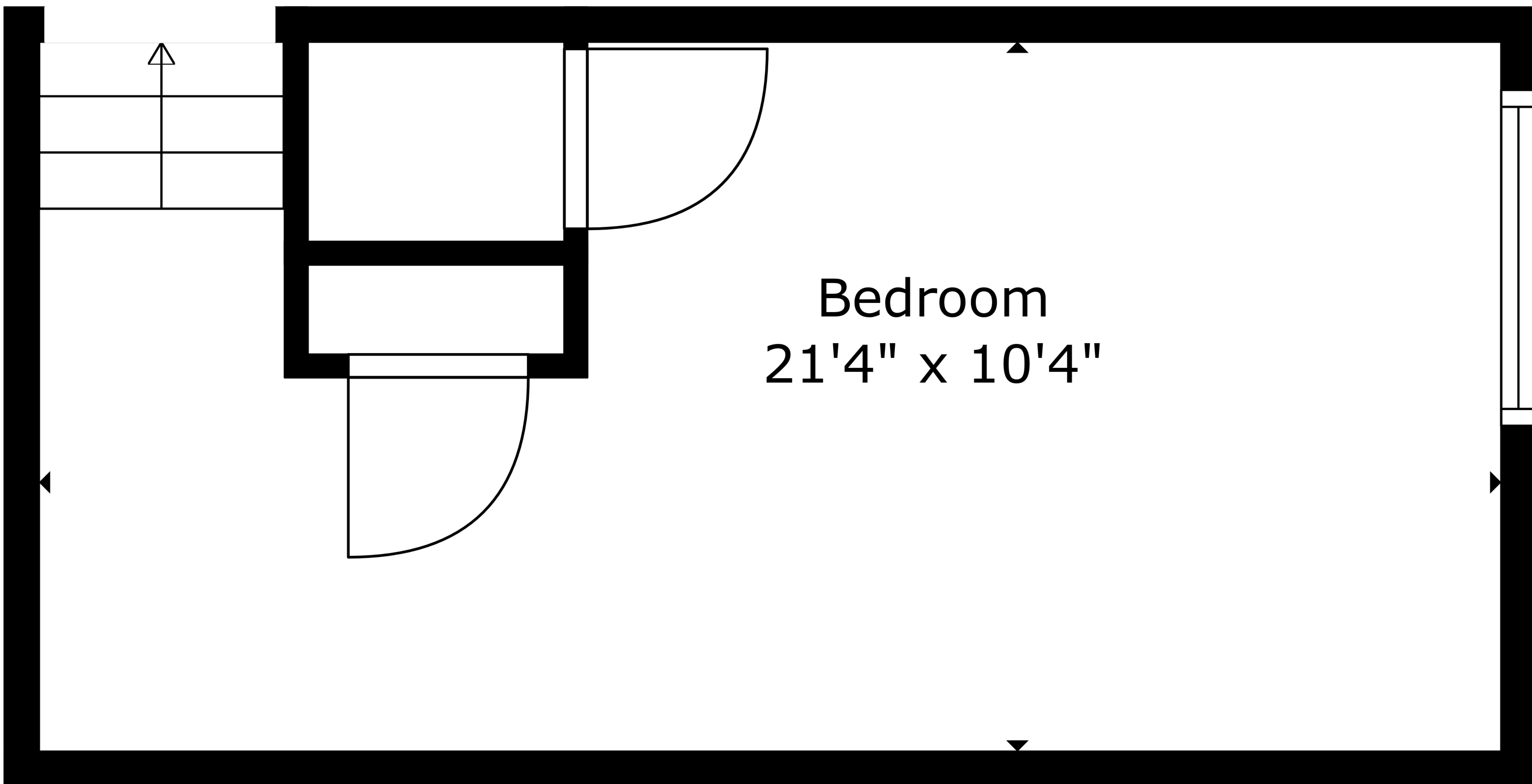
**TOTAL: 3456 sq. ft**  
BELOW GROUND: 898 sq. ft, FLOOR 2: 1288 sq. ft, FLOOR 3: 172 sq. ft, FLOOR 4: 1098 sq. ft  
EXCLUDED AREAS: STORAGE: 87 sq. ft, WINE CELLAR: 48 sq. ft, ELECTRICAL ROOM: 188 sq. ft,  
PATIO: 142 sq. ft, GARAGE: 434 sq. ft, DECK: 562 sq. ft,  
LOW CEILING: 61 sq. ft, OPEN TO BELOW: 162 sq. ft  
WALLS: 320 sq. ft



**TOTAL: 3456 sq. ft**

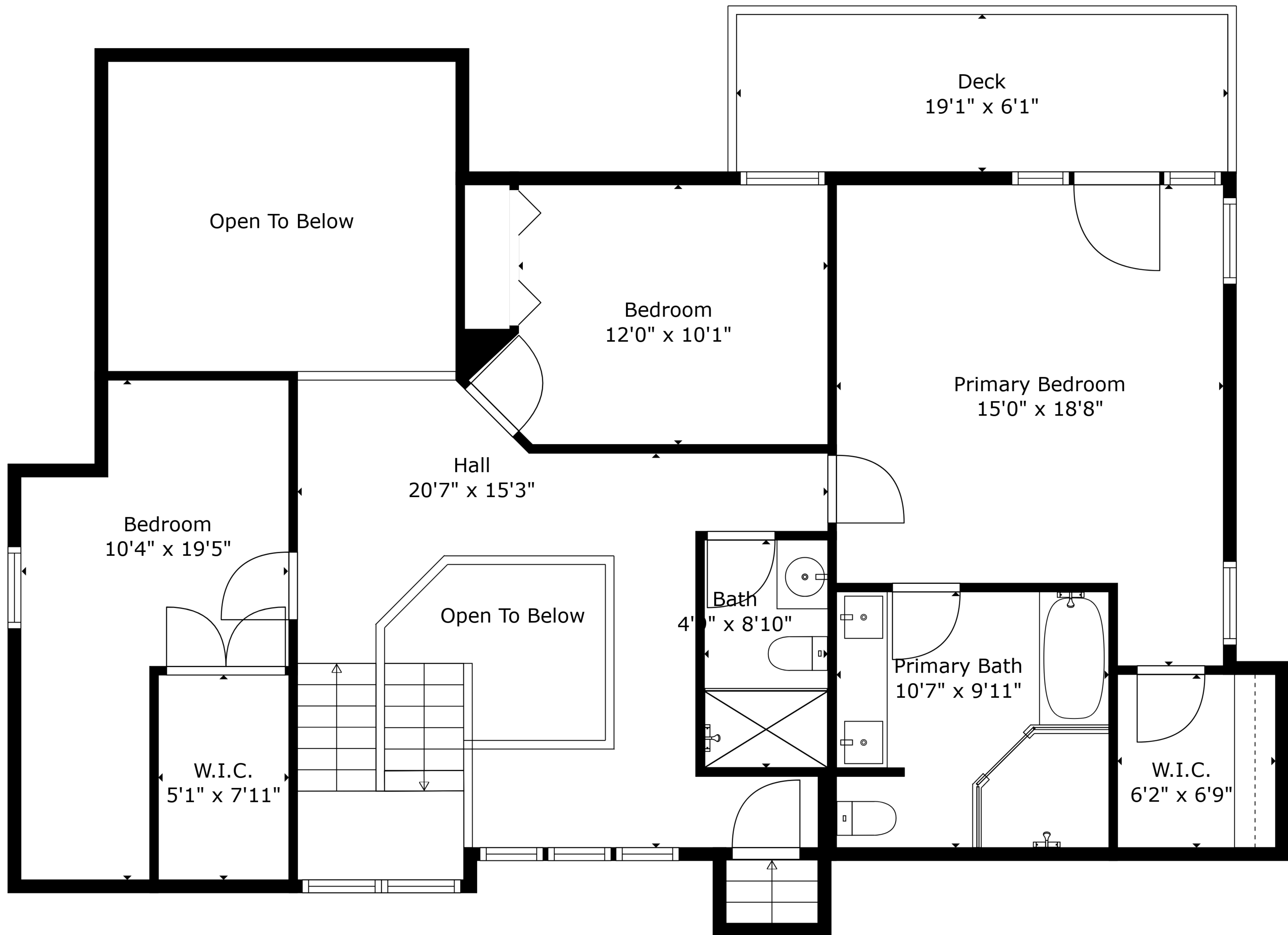
BELOW GROUND: 898 sq. ft, FLOOR 2: 1288 sq. ft, FLOOR 3: 172 sq. ft, FLOOR 4: 1098 sq. ft  
 EXCLUDED AREAS: STORAGE: 87 sq. ft, WINE CELLAR: 48 sq. ft, ELECTRICAL ROOM: 188 sq. ft,  
 PATIO: 142 sq. ft, GARAGE: 434 sq. ft, DECK: 562 sq. ft,  
 LOW CEILING: 61 sq. ft, OPEN TO BELOW: 162 sq. ft  
 WALLS: 320 sq. ft

Measurements Deemed Highly Reliable But Not Guaranteed. Measured By Cubicasa Tech.



**TOTAL: 3456 sq. ft**

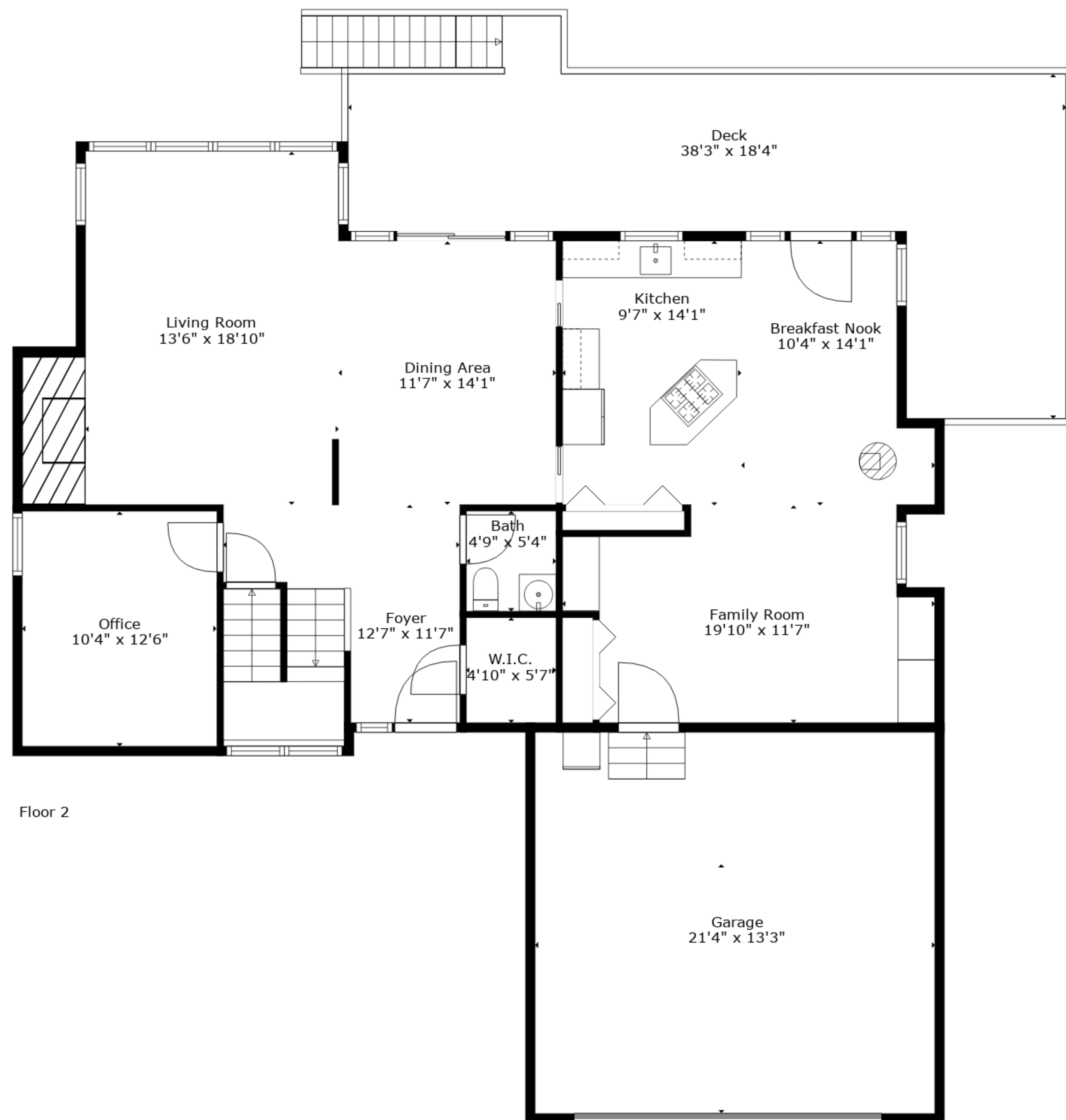
BELOW GROUND: 898 sq. ft, FLOOR 2: 1288 sq. ft, FLOOR 3: 172 sq. ft, FLOOR 4: 1098 sq. ft  
EXCLUDED AREAS: STORAGE: 87 sq. ft, WINE CELLAR: 48 sq. ft, ELECTRICAL ROOM: 188 sq. ft,  
PATIO: 142 sq. ft, GARAGE: 434 sq. ft, DECK: 562 sq. ft,  
LOW CEILING: 61 sq. ft, OPEN TO BELOW: 162 sq. ft  
WALLS: 320 sq. ft



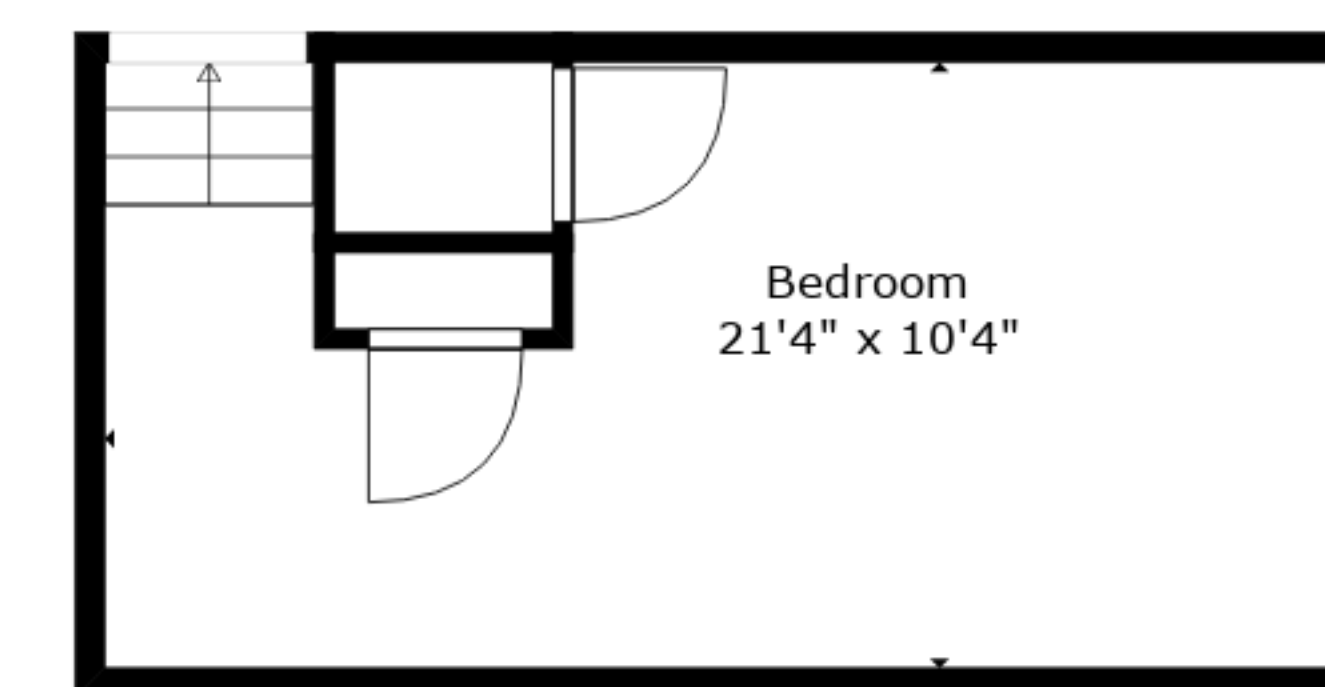
**TOTAL: 3456 sq. ft**  
 BELOW GROUND: 898 sq. ft, FLOOR 2: 1288 sq. ft, FLOOR 3: 172 sq. ft, FLOOR 4: 1098 sq. ft  
 EXCLUDED AREAS: STORAGE: 87 sq. ft, WINE CELLAR: 48 sq. ft, ELECTRICAL ROOM: 188 sq. ft,  
 PATIO: 142 sq. ft, GARAGE: 434 sq. ft, DECK: 562 sq. ft,  
 LOW CEILING: 61 sq. ft, OPEN TO BELOW: 162 sq. ft  
 WALLS: 320 sq. ft

Measurements Deemed Highly Reliable But Not Guaranteed. Measured By Cubicasa Tech.

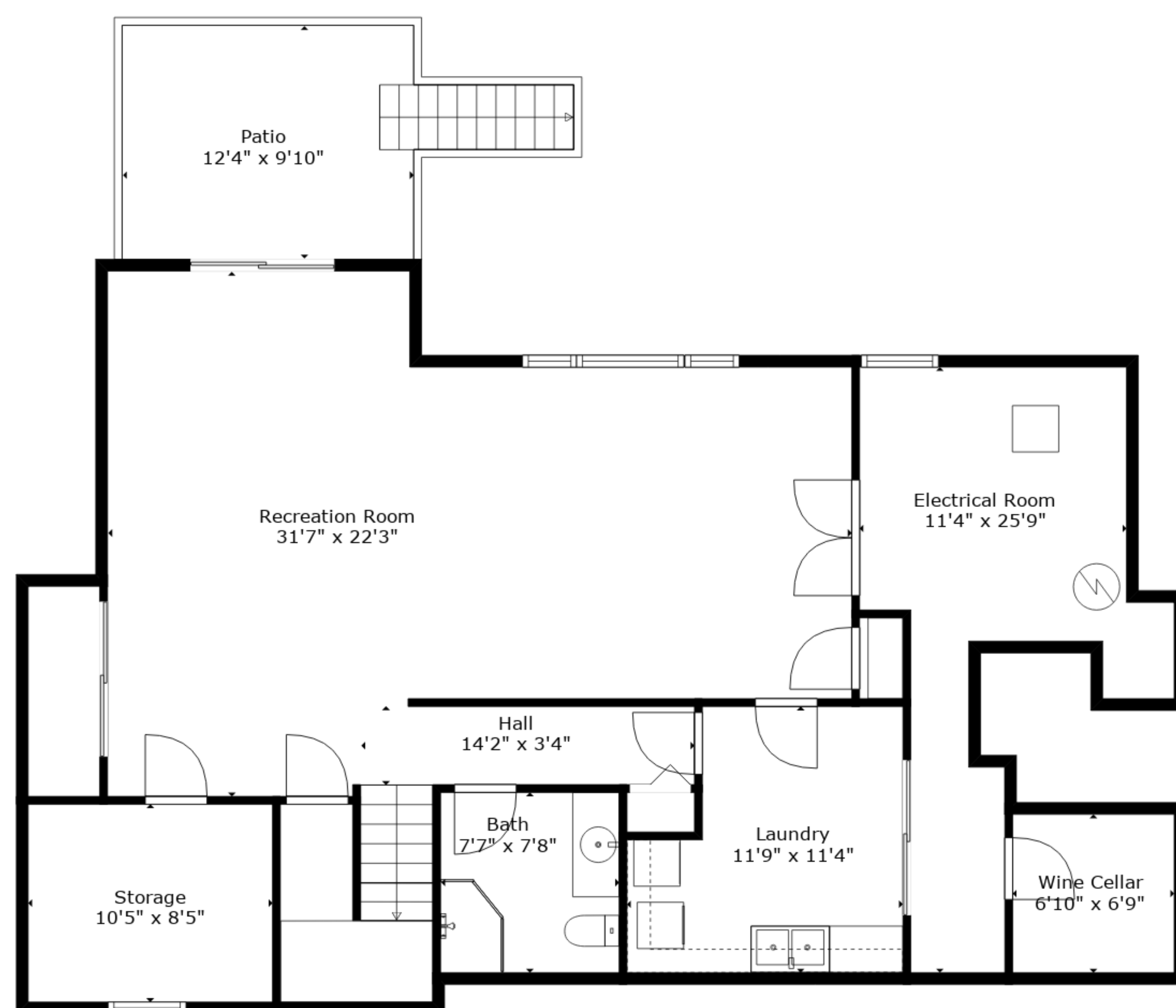




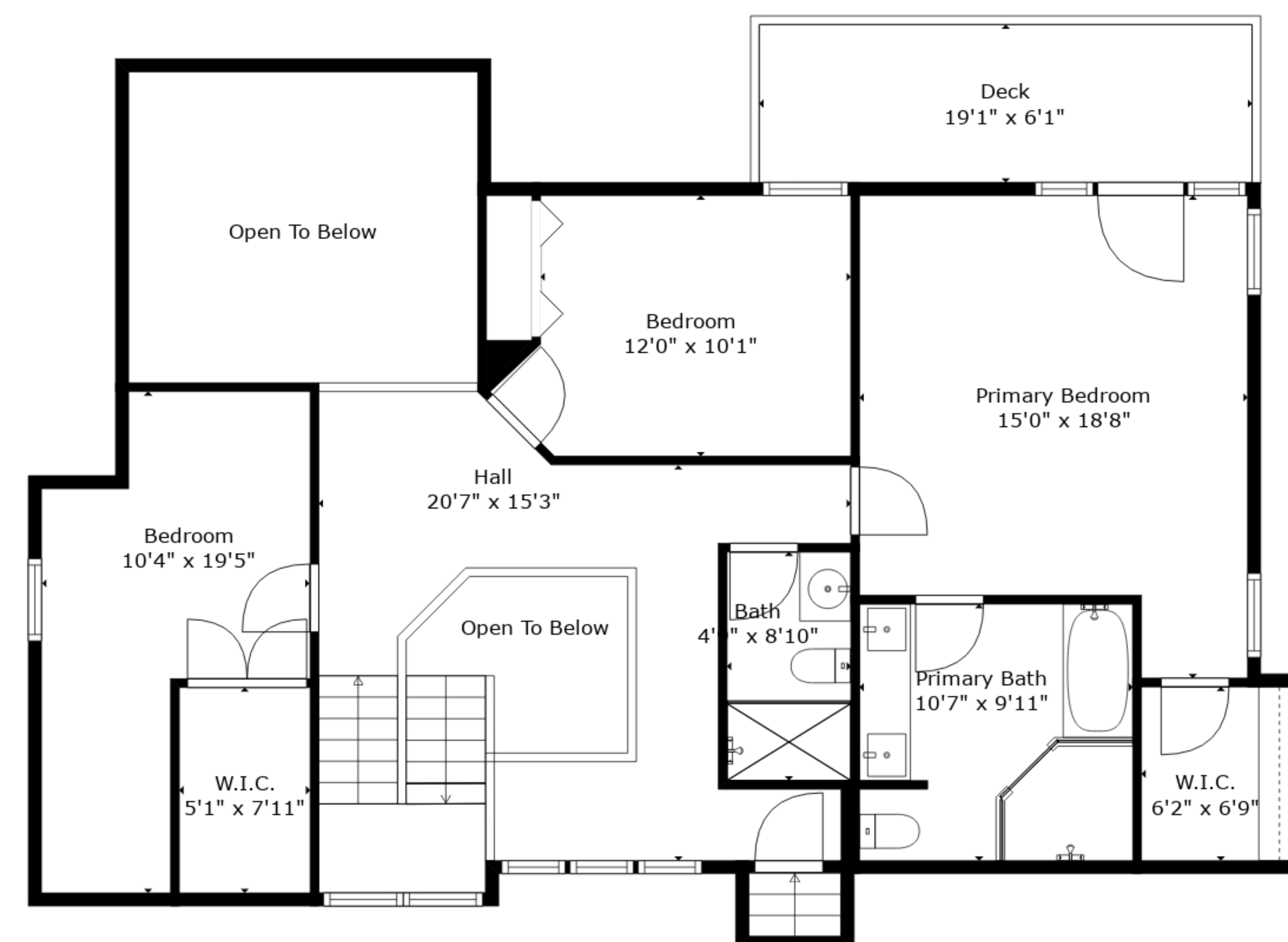
Floor 2



Floor 3



Floor 1



Floor 4

**TOTAL: 3456 sq. ft**  
 BELOW GROUND: 898 sq. ft, FLOOR 2: 1288 sq. ft, FLOOR 3: 172 sq. ft, FLOOR 4: 1098 sq. ft  
 EXCLUDED AREAS: STORAGE: 87 sq. ft, WINE CELLAR: 48 sq. ft, ELECTRICAL ROOM: 188 sq. ft,  
 PATIO: 142 sq. ft, GARAGE: 434 sq. ft, DECK: 562 sq. ft,  
 LOW CEILING: 61 sq. ft, OPEN TO BELOW: 162 sq. ft  
 WALLS: 320 sq. ft