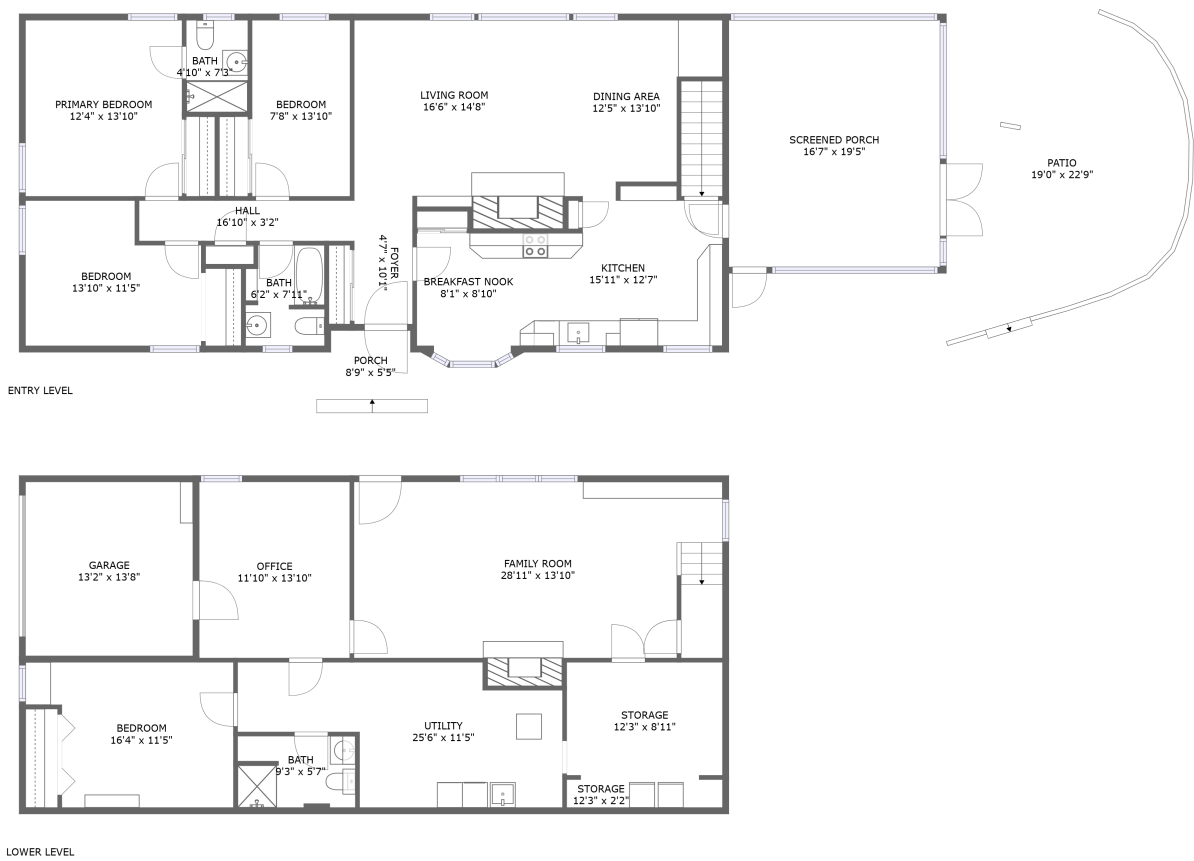
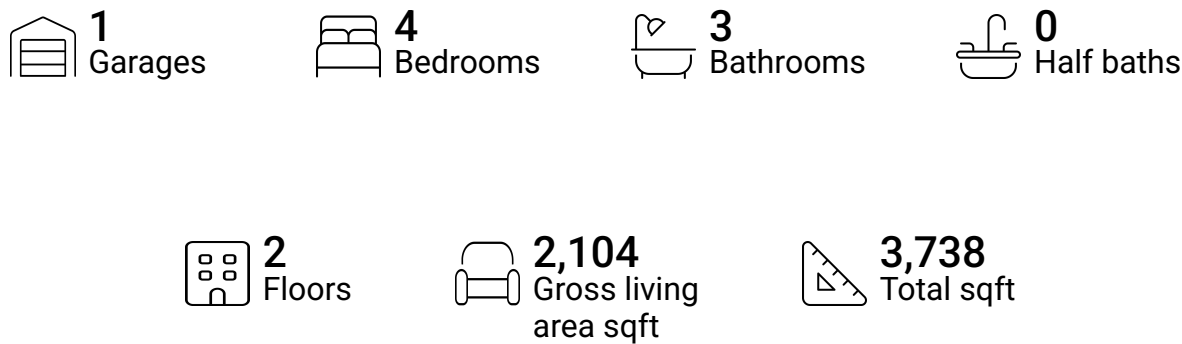


Home report

3801 Highwood Road Northwest, Roundhill, Roanoke, Roanoke city, Virginia, United States, 24012

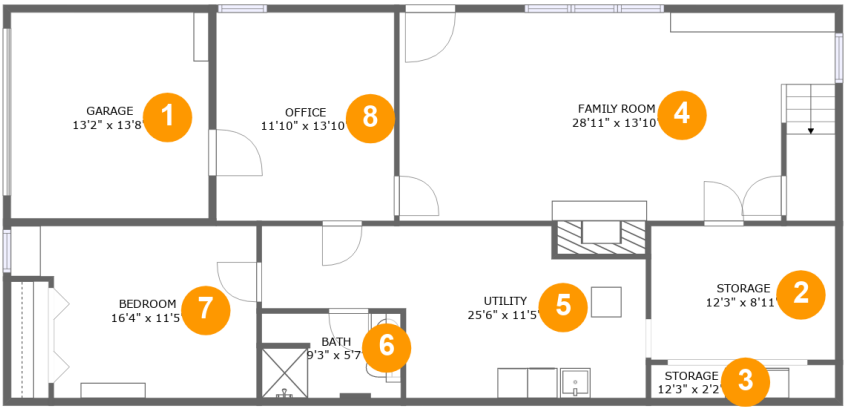


Property summary



Home report

3801 Highwood Road Northwest, Roundhill, Roanoke, Roanoke city, Virginia, United States, 24012



Room dimensions

Floor 1

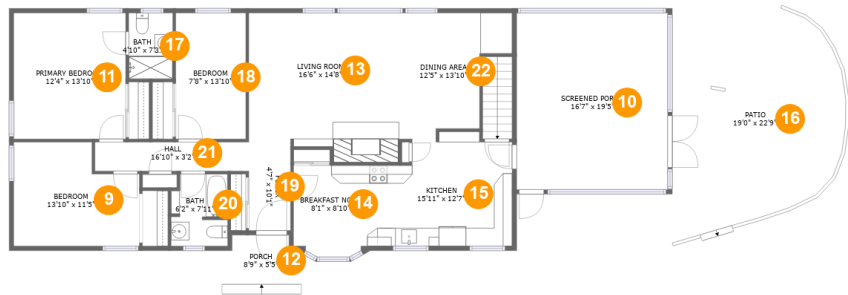
Total sqft: 1485

Living area: 632

#		Max Dimensions	sqft	Included
1	Garage	13'2" x 13'8"	180 sq. ft	No
2	Storage	12'3" x 8'11"	109 sq. ft	No
3	Storage	12'3" x 2'2"	27 sq. ft	No
4	Family Room	28'11" x 13'10"	412 sq. ft	Yes
5	Utility	25'6" x 11'5"	221 sq. ft	No
6	Bath	9'3" x 5'7"	51 sq. ft	No
7	Bedroom	16'4" x 11'5"	163 sq. ft	No
8	Office	11'10" x 13'10"	164 sq. ft	Yes

Home report

3801 Highwood Road Northwest, Roundhill, Roanoke, Roanoke city, Virginia, United States, 24012



Room dimensions

Floor 2 Total sqft: 2253 Living area: 1472

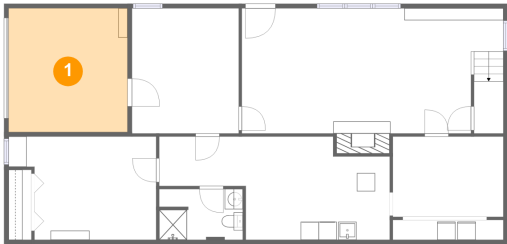
#		Max Dimensions	sqft	Included
9	Bedroom	13'10" x 11'5"	139 sq. ft	Yes
10	Screened Porch	16'7" x 19'5"	322 sq. ft	No
11	Primary Bedroom	12'4" x 13'10"	170 sq. ft	Yes
12	Porch	8'9" x 5'5"	43 sq. ft	No
13	Living Room	16'6" x 14'8"	250 sq. ft	Yes
14	Breakfast Nook	8'1" x 8'10"	72 sq. ft	Yes
15	Kitchen	15'11" x 12'7"	175 sq. ft	Yes
16	Patio	19'0" x 22'9"	383 sq. ft	No
17	Bath	4'10" x 7'3"	35 sq. ft	Yes
18	Bedroom	7'8" x 13'10"	106 sq. ft	Yes
19	Foyer	4'7" x 10'1"	46 sq. ft	Yes

Home report

3801 Highwood Road Northwest, Roundhill, Roanoke, Roanoke city, Virginia, United States, 24012

#		Max Dimensions	sqft	Included
20	Bath	6'2" x 7'11"	46 sq. ft	Yes
21	Hall	16'10" x 3'2"	54 sq. ft	Yes
22	Dining Area	12'5" x 13'10"	133 sq. ft	Yes

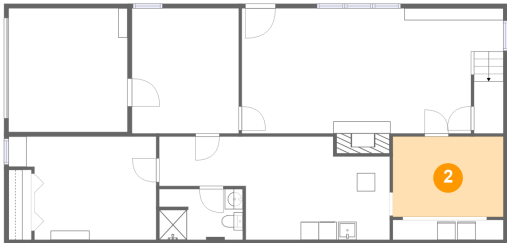
1 Floor 1 - Garage



Max Dimensions: 13'2" x 13'8"
Calculated Area: 180 sq. ft
Included: No

Heated: No
Finished: No
Enclosed: Yes
Contiguous: Yes
Permitted: Yes
Wet space: No
Addition: No
Conversion: No

2 Floor 1 - Storage

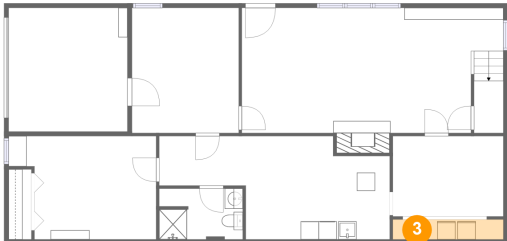


Max Dimensions: 12'3" x 8'11"
Calculated Area: 109 sq. ft
Included: No

Heated: No
Finished: No
Enclosed: No
Contiguous: No
Permitted: Yes
Wet space: No
Addition: No
Conversion: No

3801 Highwood Road Northwest, Roundhill, Roanoke, Roanoke city, Virginia, United States, 24012

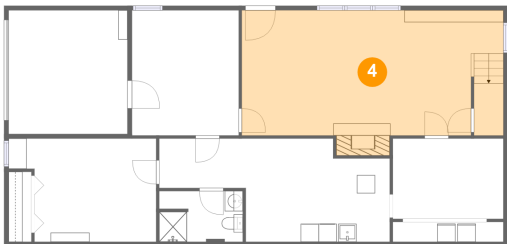
3 Floor 1 - Storage



Max Dimensions: 12'3" x 2'2"
Calculated Area: 27 sq. ft
Included: No

Heated: No
Finished: No
Enclosed: No
Contiguous: Yes
Permitted: Yes
Wet space: No
Addition: No
Conversion: No

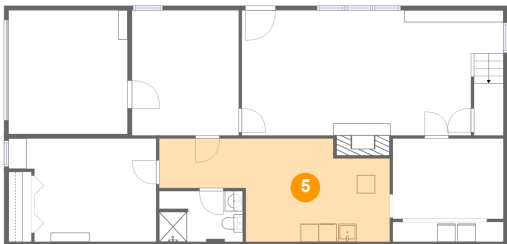
4 Floor 1 - Family Room



Max Dimensions: 28'11" x 13'10"
Calculated Area: 412 sq. ft
Included: Yes

Heated: Yes
Finished: Yes
Enclosed: Yes
Contiguous: Yes
Permitted: Yes
Wet space: No
Addition: No
Conversion: No

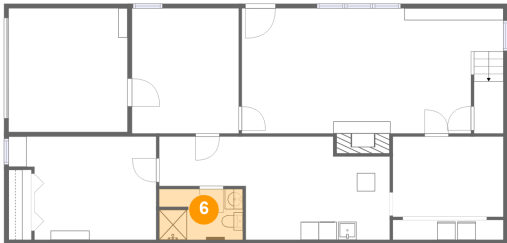
5 Floor 1 - Utility



Max Dimensions: 25'6" x 11'5"
Calculated Area: 221 sq. ft
Included: No

Heated: Yes
Finished: No
Enclosed: Yes
Contiguous: Yes
Permitted: Yes
Wet space: No
Addition: No
Conversion: No

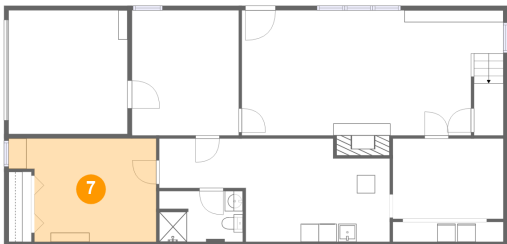
6 Floor 1 - Bath



Max Dimensions: 9'3" x 5'7"
Calculated Area: 51 sq. ft
Included: No

Heated: Yes
Finished: Yes
Enclosed: Yes
Contiguous: No
Permitted: Yes
Wet space: Yes
Addition: No
Conversion: No

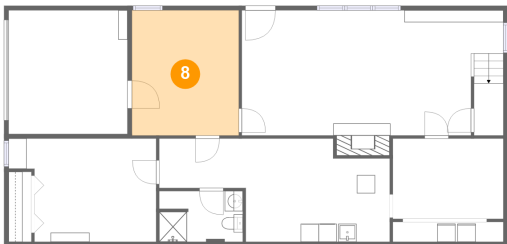
7 Floor 1 - Bedroom



Max Dimensions: 16'4" x 11'5"
Calculated Area: 163 sq. ft
Included: No

Heated: Yes
Finished: Yes
Enclosed: Yes
Contiguous: No
Permitted: Yes
Wet space: No
Addition: No
Conversion: No

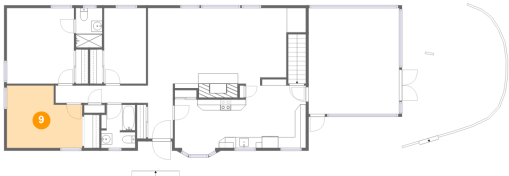
8 Floor 1 - Office



Max Dimensions: 11'10" x 13'10"
Calculated Area: 164 sq. ft
Included: Yes

Heated: Yes
Finished: Yes
Enclosed: Yes
Contiguous: Yes
Permitted: Yes
Wet space: No
Addition: No
Conversion: No

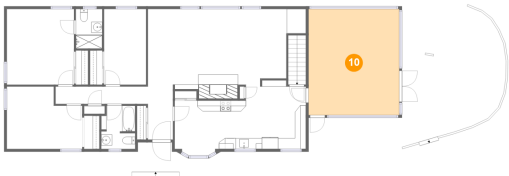
9 Floor 2 - Bedroom



Max Dimensions: 13'10" x 11'5"
Calculated Area: 139 sq. ft
Included: Yes

Heated: Yes
Finished: Yes
Enclosed: Yes
Contiguous: Yes
Permitted: Yes
Wet space: No
Addition: No
Conversion: No

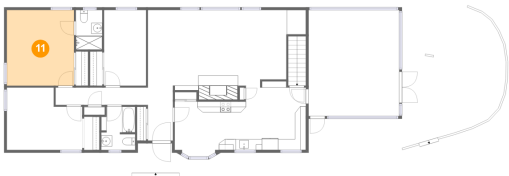
10 Floor 2 - Screened Porch



Max Dimensions: 16'7" x 19'5"
Calculated Area: 322 sq. ft
Included: No

Heated: No
Finished: Yes
Enclosed: No
Contiguous: Yes
Permitted: Yes
Wet space: No
Addition: No
Conversion: No

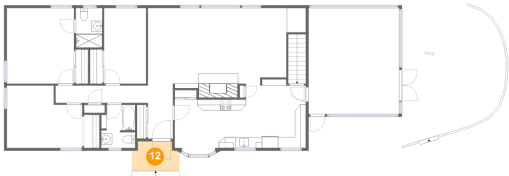
11 Floor 2 - Primary Bedroom



Max Dimensions: 12'4" x 13'10"
Calculated Area: 170 sq. ft
Included: Yes

Heated: Yes
Finished: Yes
Enclosed: Yes
Contiguous: Yes
Permitted: Yes
Wet space: No
Addition: No
Conversion: No

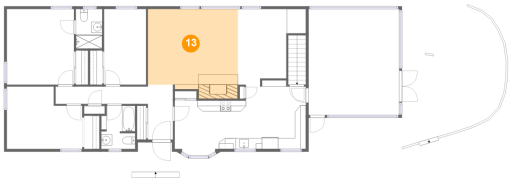
12 Floor 2 - Porch



Max Dimensions: 8'9" x 5'5"
Calculated Area: 43 sq. ft
Included: No

Heated: No
Finished: Yes
Enclosed: No
Contiguous: Yes
Permitted: Yes
Wet space: No
Addition: No
Conversion: No

13 Floor 2 - Living Room



Max Dimensions: 16'6" x 14'8"
Calculated Area: 250 sq. ft
Included: Yes

Heated: Yes
Finished: Yes
Enclosed: Yes
Contiguous: Yes
Permitted: Yes
Wet space: No
Addition: No
Conversion: No

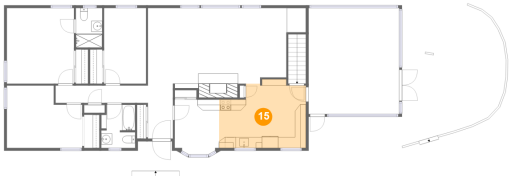
14 Floor 2 - Breakfast Nook



Max Dimensions: 8'1" x 8'10"
Calculated Area: 72 sq. ft
Included: Yes

Heated: Yes
Finished: Yes
Enclosed: Yes
Contiguous: Yes
Permitted: Yes
Wet space: No
Addition: No
Conversion: No

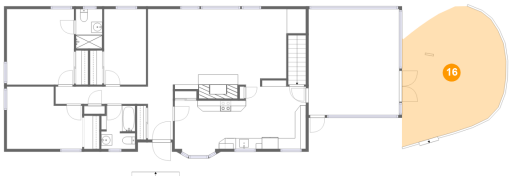
15 Floor 2 - Kitchen



Max Dimensions: 15'11" x 12'7"
Calculated Area: 175 sq. ft
Included: Yes

Heated: Yes
Finished: Yes
Enclosed: Yes
Contiguous: Yes
Permitted: Yes
Wet space: No
Addition: No
Conversion: No

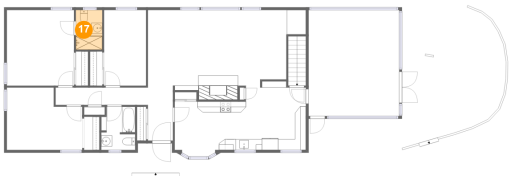
16 Floor 2 - Patio



Max Dimensions: 19'0" x 22'9"
Calculated Area: 383 sq. ft
Included: No

Heated: No
Finished: Yes
Enclosed: No
Contiguous: Yes
Permitted: Yes
Wet space: No
Addition: No
Conversion: No

17 Floor 2 - Bath

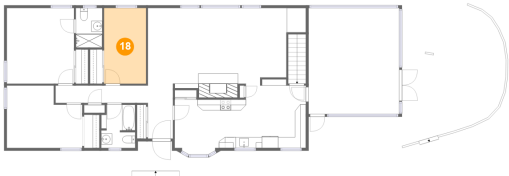


Max Dimensions: 4'10" x 7'3"
Calculated Area: 35 sq. ft
Included: Yes

Heated: Yes
Finished: Yes
Enclosed: Yes
Contiguous: Yes
Permitted: Yes
Wet space: Yes
Addition: No
Conversion: No

3801 Highwood Road Northwest, Roundhill, Roanoke, Roanoke city, Virginia, United States, 24012

18 Floor 2 - Bedroom



Max Dimensions: 7'8" x 13'10"
Calculated Area: 106 sq. ft
Included: Yes

Heated: Yes
Finished: Yes
Enclosed: Yes
Contiguous: Yes
Permitted: Yes
Wet space: No
Addition: No
Conversion: No

19 Floor 2 - Foyer



Max Dimensions: 4'7" x 10'1"
Calculated Area: 46 sq. ft
Included: Yes

Heated: Yes
Finished: Yes
Enclosed: Yes
Contiguous: Yes
Permitted: Yes
Wet space: No
Addition: No
Conversion: No

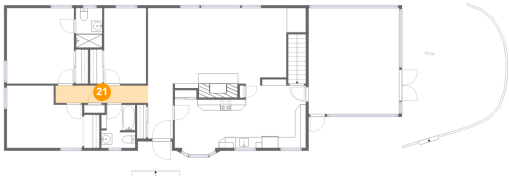
20 Floor 2 - Bath



Max Dimensions: 6'2" x 7'11"
Calculated Area: 46 sq. ft
Included: Yes

Heated: Yes
Finished: Yes
Enclosed: Yes
Contiguous: Yes
Permitted: Yes
Wet space: Yes
Addition: No
Conversion: No

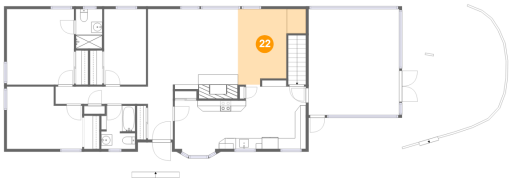
21 Floor 2 - Hall



Max Dimensions: 16'10" x 3'2"
Calculated Area: 54 sq. ft
Included: Yes

Heated: Yes
Finished: Yes
Enclosed: Yes
Contiguous: Yes
Permitted: Yes
Wet space: No
Addition: No
Conversion: No

22 Floor 2 - Dining Area



Max Dimensions: 12'5" x 13'10"
Calculated Area: 133 sq. ft
Included: Yes

Heated: Yes
Finished: Yes
Enclosed: Yes
Contiguous: Yes
Permitted: Yes
Wet space: No
Addition: No
Conversion: No