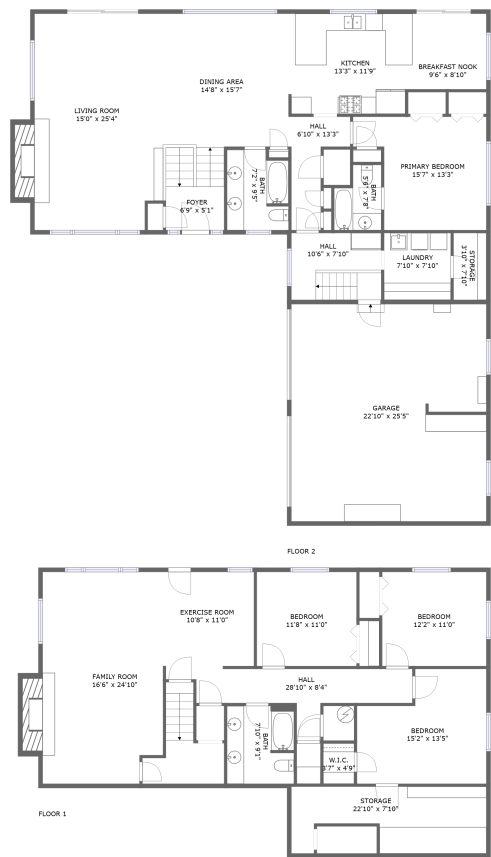


Home report


809 Rocky Point Drive, Camano, Camano Island, Island County,  
Washington, United States, 98282




**Total Area: 2852 sq. ft**  
Floor 1: 1347 sq. ft, Floor 2: 1505 sq. ft  
Excluded: Storage 182 sq. ft, Garage 578 sq. ft, Fireplace 23 sq. ft, Walls: 209 sq. ft

Property summary

 **2** Floors

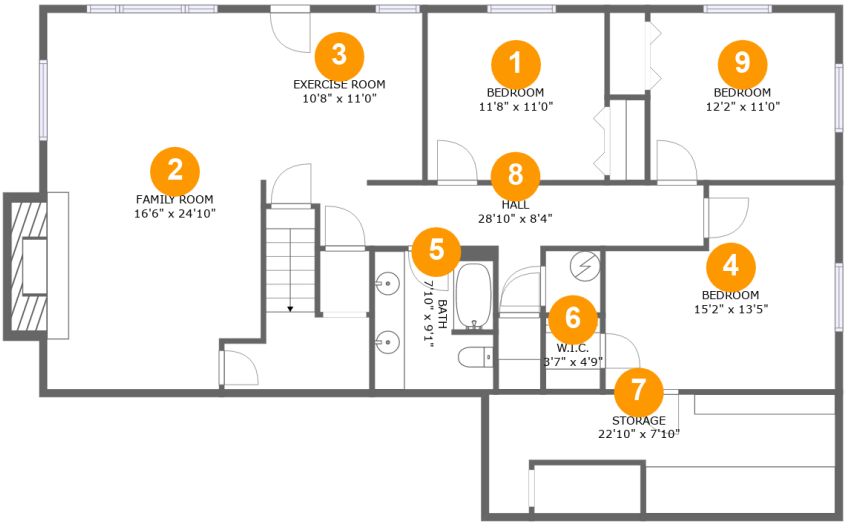
 **4** Bedrooms

 **3** Bathrooms

 **1** Garages

Home report

809 Rocky Point Drive, Camano, Camano Island, Island County,  
Washington, United States, 98282



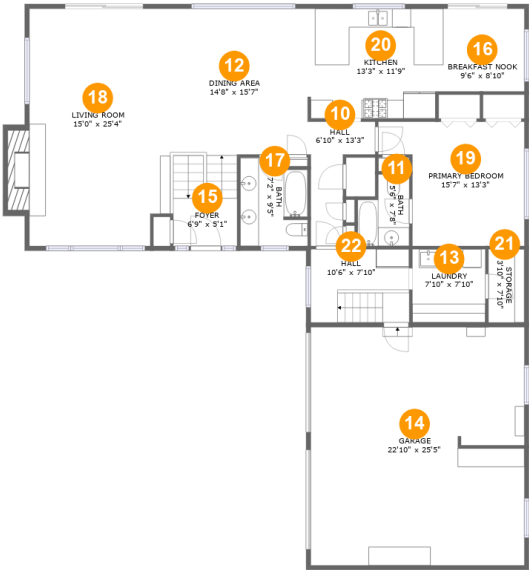
Room dimensions

Floor 1 Total:1347sqft Excluded: 152sqft

#		Max Dimensions	sqft	Included
1	Bedroom	11'8" x 11'0"	129 sq. ft	Yes
2	Family Room	16'6" x 24'10"	362 sq. ft	Yes
3	Exercise Room	10'8" x 11'0"	117 sq. ft	Yes
4	Bedroom	15'2" x 13'5"	174 sq. ft	Yes
5	Bath	7'10" x 9'1"	71 sq. ft	Yes
6	W.I.C.	3'7" x 4'9"	17 sq. ft	Yes
7	Storage	22'10" x 7'10"	152 sq. ft	No
8	Hall	28'10" x 8'4"	120 sq. ft	Yes
9	Bedroom	12'2" x 11'0"	135 sq. ft	Yes

Home report

809 Rocky Point Drive, Camano, Camano Island, Island County,  
Washington, United States, 98282



Room dimensions

Floor 2

Total:1505sqft

Excluded: 631sqft

#		Max Dimensions	sqft	Included
10	Hall	6'10" x 13'3"	58 sq. ft	Yes
11	Bath	5'6" x 7'8"	36 sq. ft	Yes
12	Dining Area	14'8" x 15'7"	260 sq. ft	Yes
13	Laundry	7'10" x 7'10"	61 sq. ft	Yes
14	Garage	22'10" x 25'5"	578 sq. ft	No
15	Foyer	6'9" x 5'1"	35 sq. ft	Yes
16	Breakfast Nook	9'6" x 8'10"	84 sq. ft	Yes
17	Bath	7'2" x 9'5"	64 sq. ft	Yes
18	Living Room	15'0" x 25'4"	402 sq. ft	Yes
19	Primary Bedroom	15'7" x 13'3"	172 sq. ft	Yes
20	Kitchen	13'3" x 11'9"	157 sq. ft	Yes

Home report

809 Rocky Point Drive, Camano, Camano Island, Island County,  
Washington, United States, 98282

#		Max Dimensions	sqft	Included
21	Storage	3'10" x 7'10"	30 sq. ft	No
22	Hall	10'6" x 7'10"	82 sq. ft	Yes

1 Floor 1 - Bedroom



Max Dimensions: 11'8" x 11'0"  
Calculated Area: 129 sq. ft  
Included: Yes

Heated: Yes  
Finished: Yes  
Enclosed: Yes  
Contiguous: Yes  
Permitted: Yes  
Wet space: No  
Addition: No  
Conversion: No

2 Floor 1 - Family Room



Max Dimensions: 16'6" x 24'10"  
Calculated Area: 362 sq. ft  
Included: Yes

Heated: Yes  
Finished: Yes  
Enclosed: Yes  
Contiguous: Yes  
Permitted: Yes  
Wet space: No  
Addition: No  
Conversion: No

3 Floor 1 - Exercise Room



Max Dimensions: 10'8" x 11'0"  
Calculated Area: 117 sq. ft  
Included: Yes

Heated: Yes  
Finished: Yes  
Enclosed: Yes  
Contiguous: Yes  
Permitted: Yes  
Wet space: No  
Addition: No  
Conversion: No

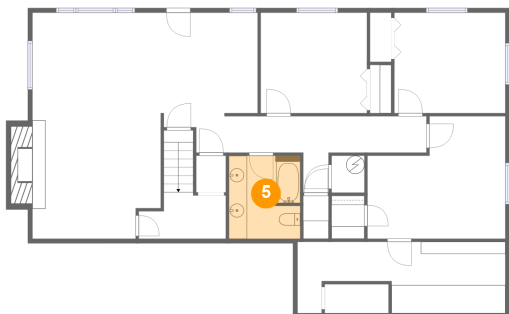
4 Floor 1 - Bedroom



Max Dimensions: 15'2" x 13'5"  
Calculated Area: 174 sq. ft  
Included: Yes

Heated: Yes  
Finished: Yes  
Enclosed: Yes  
Contiguous: Yes  
Permitted: Yes  
Wet space: No  
Addition: No  
Conversion: No

5 Floor 1 - Bath



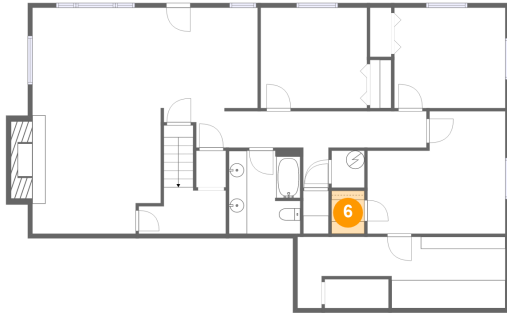
Max Dimensions: 7'10" x 9'1"  
Calculated Area: 71 sq. ft  
Included: Yes

Heated: Yes  
Finished: Yes  
Enclosed: Yes  
Contiguous: Yes  
Permitted: Yes  
Wet space: Yes  
Addition: No  
Conversion: No

## Home report

809 Rocky Point Drive, Camano, Camano Island, Island County,  
Washington, United States, 98282

### 6 Floor 1 - W.I.C.



Max Dimensions: 3'7" x 4'9"  
Calculated Area: 17 sq. ft  
Included: Yes

Heated: Yes  
Finished: Yes  
Enclosed: Yes  
Contiguous: Yes  
Permitted: Yes  
Wet space: No  
Addition: No  
Conversion: No

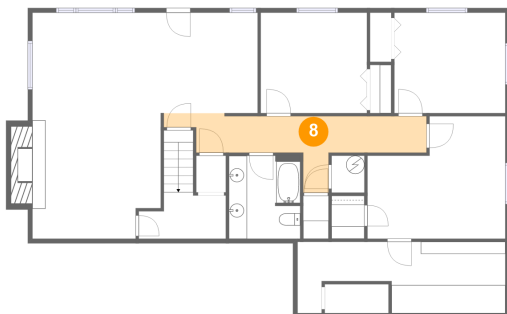
### 7 Floor 1 - Storage



Max Dimensions: 22'10" x 7'10"  
Calculated Area: 152 sq. ft  
Included: No

Heated: No  
Finished: No  
Enclosed: No  
Contiguous: Yes  
Permitted: Yes  
Wet space: No  
Addition: No  
Conversion: No

### 8 Floor 1 - Hall



Max Dimensions: 28'10" x 8'4"  
Calculated Area: 120 sq. ft  
Included: Yes

Heated: Yes  
Finished: Yes  
Enclosed: Yes  
Contiguous: Yes  
Permitted: Yes  
Wet space: No  
Addition: No  
Conversion: No

## Home report

809 Rocky Point Drive, Camano, Camano Island, Island County,  
Washington, United States, 98282

### 9 Floor 1 - Bedroom



Max Dimensions: 12'2" x 11'0"  
Calculated Area: 135 sq. ft  
Included: Yes

Heated: Yes  
Finished: Yes  
Enclosed: Yes  
Contiguous: Yes  
Permitted: Yes  
Wet space: No  
Addition: No  
Conversion: No

### 10 Floor 2 - Hall



Max Dimensions: 6'10" x 13'3"  
Calculated Area: 58 sq. ft  
Included: Yes

Heated: Yes  
Finished: Yes  
Enclosed: Yes  
Contiguous: Yes  
Permitted: Yes  
Wet space: No  
Addition: No  
Conversion: No

### 11 Floor 2 - Bath



Max Dimensions: 5'6" x 7'8"  
Calculated Area: 36 sq. ft  
Included: Yes

Heated: Yes  
Finished: Yes  
Enclosed: Yes  
Contiguous: Yes  
Permitted: Yes  
Wet space: Yes  
Addition: No  
Conversion: No



12 Floor 2 - Dining Area



Max Dimensions: 14'8" x 15'7"  
Calculated Area: 260 sq. ft  
Included: Yes

Heated: Yes  
Finished: Yes  
Enclosed: Yes  
Contiguous: Yes  
Permitted: Yes  
Wet space: No  
Addition: No  
Conversion: No

13 Floor 2 - Laundry



Max Dimensions: 7'10" x 7'10"  
Calculated Area: 61 sq. ft  
Included: Yes

Heated: Yes  
Finished: Yes  
Enclosed: Yes  
Contiguous: Yes  
Permitted: Yes  
Wet space: No  
Addition: No  
Conversion: No

14 Floor 2 - Garage



Max Dimensions: 22'10" x 25'5"  
Calculated Area: 578 sq. ft  
Included: No

Heated: No  
Finished: No  
Enclosed: Yes  
Contiguous: Yes  
Permitted: Yes  
Wet space: No  
Addition: No  
Conversion: No

809 Rocky Point Drive, Camano, Camano Island, Island County,  
Washington, United States, 98282

## 15 Floor 2 - Foyer



Max Dimensions: 6'9" x 5'1"  
Calculated Area: 35 sq. ft  
Included: Yes

Heated: Yes  
Finished: Yes  
Enclosed: Yes  
Contiguous: Yes  
Permitted: Yes  
Wet space: No  
Addition: No  
Conversion: No

## 16 Floor 2 - Breakfast Nook



Max Dimensions: 9'6" x  
8'10"  
Calculated Area: 84 sq. ft  
Included: Yes

Heated: Yes  
Finished: Yes  
Enclosed: Yes  
Contiguous:  
Yes  
Permitted: Yes  
Wet space: No  
Addition: No  
Conversion: No

## 17 Floor 2 - Bath



Max Dimensions: 7'2" x 9'5"  
Calculated Area: 64 sq. ft  
Included: Yes

Heated: Yes  
Finished: Yes  
Enclosed: Yes  
Contiguous: Yes  
Permitted: Yes  
Wet space: Yes  
Addition: No  
Conversion: No

18 Floor 2 - Living Room



Max Dimensions: 15'0" x 25'4"  
Calculated Area: 402 sq. ft  
Included: Yes

Heated: Yes  
Finished: Yes  
Enclosed: Yes  
Contiguous: Yes  
Permitted: Yes  
Wet space: No  
Addition: No  
Conversion: No

19 Floor 2 - Primary Bedroom



Max Dimensions: 15'7" x 13'3"  
Calculated Area: 172 sq. ft  
Included: Yes

Heated: Yes  
Finished: Yes  
Enclosed: Yes  
Contiguous: Yes  
Permitted: Yes  
Wet space: No  
Addition: No  
Conversion: No

20 Floor 2 - Kitchen



Max Dimensions: 13'3" x 11'9"  
Calculated Area: 157 sq. ft  
Included: Yes

Heated: Yes  
Finished: Yes  
Enclosed: Yes  
Contiguous: Yes  
Permitted: Yes  
Wet space: No  
Addition: No  
Conversion: No

21 Floor 2 - Storage



Max Dimensions: 3'10" x 7'10"  
Calculated Area: 30 sq. ft  
Included: No

Heated: No  
Finished: No  
Enclosed: No  
Contiguous: Yes  
Permitted: Yes  
Wet space: No  
Addition: No  
Conversion: No

22 Floor 2 - Hall



Max Dimensions: 10'6" x 7'10"  
Calculated Area: 82 sq. ft  
Included: Yes

Heated: Yes  
Finished: Yes  
Enclosed: Yes  
Contiguous: Yes  
Permitted: Yes  
Wet space: No  
Addition: No  
Conversion: No