

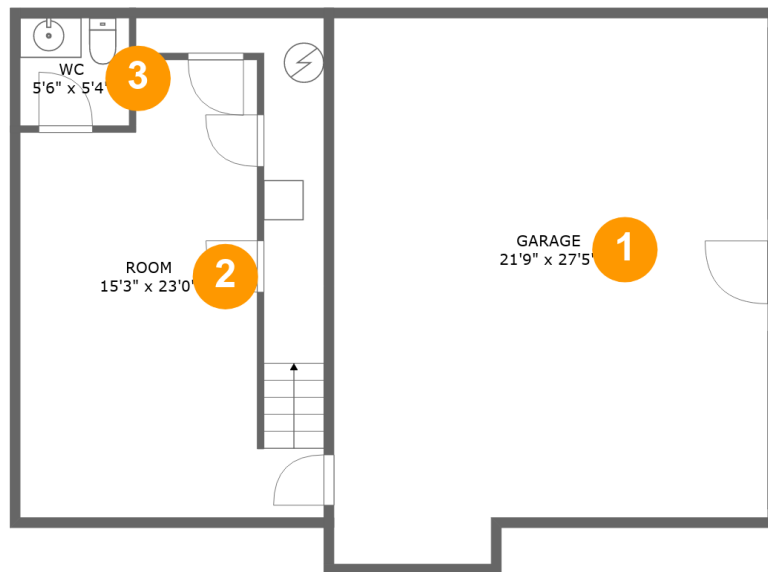
7909 Sequoia Dr, Brax-Han Court, Roanoke, Roanoke County, Virginia, United States, 24019



Property Summary

 **1** garages  **4** bedrooms  **2** bathrooms  **2** half baths

 **3** floors  **2,348** Gross Living Area sqft  **3,891** total sqft

**7909 Sequoia Dr, Brax-Han Court, Roanoke,
Roanoke County, Virginia, United States, 24019****Room Dimensions**

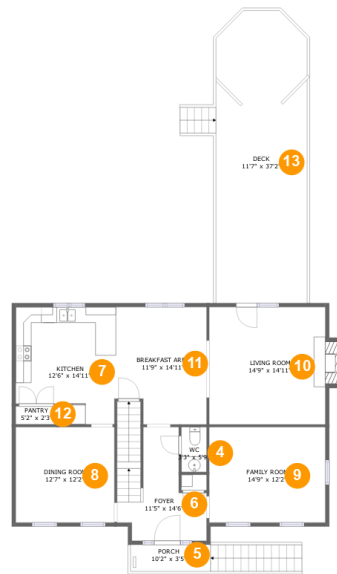
Floor 1

Total sqft: 1025

Living area: 0

#	Room name	Dimensions	Area (sqft)	Counted as Living Area
1	Garage	21'9" x 27'5"	564 sq. ft	No
2	Room	15'3" x 23'0"	289 sq. ft	No
3	Wc	5'6" x 5'4"	30 sq. ft	No

7909 Sequoia Dr, Brax-Han Court, Roanoke, Roanoke County, Virginia, United States, 24019



Room Dimensions

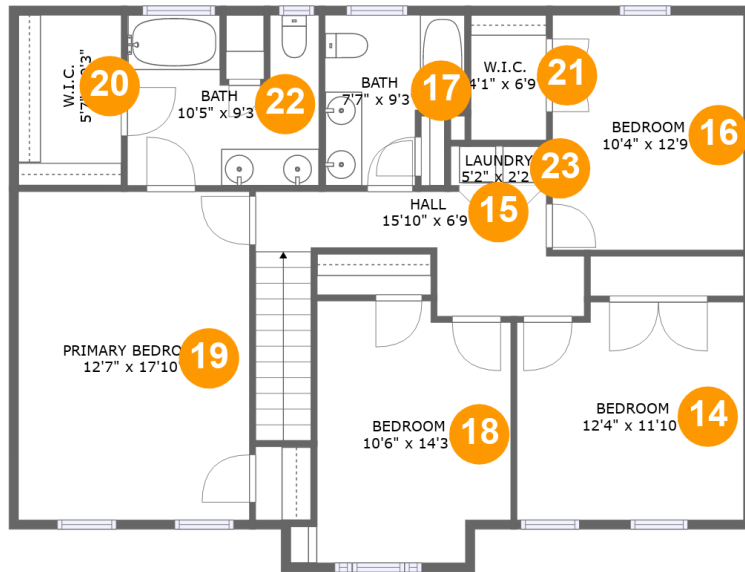
Floor 2

Total sqft: 1692

Living area: 1174

#	Room name	Dimensions	Area (sqft)	Counted as Living Area
4	Wc	3'3" x 5'9"	18 sq. ft	Yes
5	Porch	10'2" x 3'5"	74 sq. ft	No
6	Foyer	11'5" x 14'6"	138 sq. ft	Yes
7	Kitchen	12'6" x 14'11"	173 sq. ft	Yes
8	Dining Room	12'7" x 12'2"	153 sq. ft	Yes
9	Family Room	14'9" x 12'2"	180 sq. ft	Yes
10	Living Room	14'9" x 14'11"	231 sq. ft	Yes
11	Breakfast Area	11'9" x 14'11"	163 sq. ft	Yes
12	Pantry	5'2" x 2'3"	12 sq. ft	Yes
13	Deck	11'7" x 37'2"	432 sq. ft	No

7909 Sequoia Dr, Brax-Han Court, Roanoke, Roanoke County, Virginia, United States, 24019



Room Dimensions

Floor 3

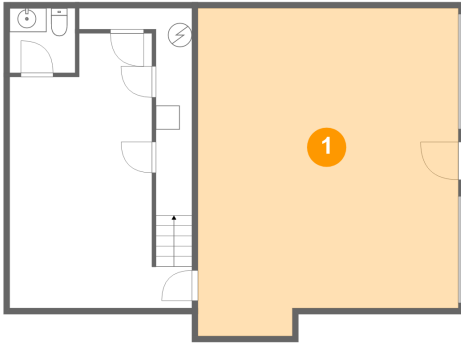
Total sqft: 1174

Living area: 1174

#	Room name	Dimensions	Area (sqft)	Counted as Living Area
14	Bedroom	12'4" x 11'10"	141 sq. ft	Yes
15	Hall	15'10" x 6'9"	109 sq. ft	Yes
16	Bedroom	10'4" x 12'9"	133 sq. ft	Yes
17	Bath	7'7" x 9'3"	59 sq. ft	Yes
18	Bedroom	10'6" x 14'3"	142 sq. ft	Yes
19	Primary Bedroom	12'7" x 17'10"	224 sq. ft	Yes
20	W.i.c.	5'7" x 9'3"	52 sq. ft	Yes
21	W.i.c.	4'1" x 6'9"	28 sq. ft	Yes
22	Bath	10'5" x 9'3"	86 sq. ft	Yes
23	Laundry	5'2" x 2'2"	11 sq. ft	Yes

7909 Sequoia Dr, Brax-Han Court, Roanoke, Roanoke County, Virginia, United States, 24019

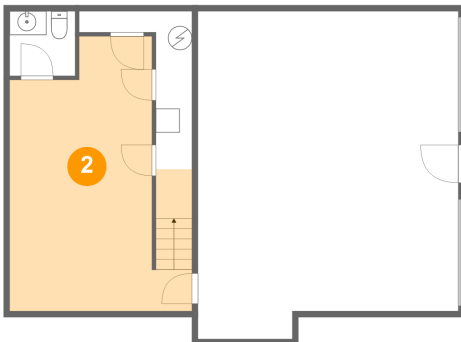
1 Floor 1 - Garage



Dimensions: 21'9" x 27'5"
Area: 564 sq. ft
Counted as Living Area: No

Heated: No
Finished: No
Enclosed: Yes
Contiguous: Yes
Permitted: Yes
Wet Space: No
Addition: No
Conversion: No

2 Floor 1 - Room

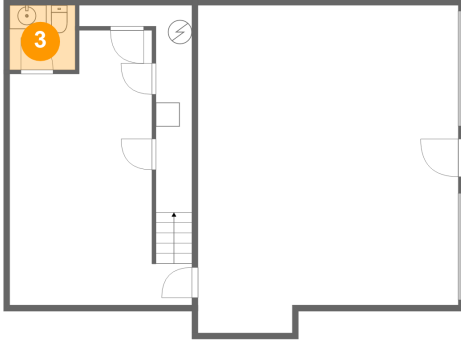


Dimensions: 15'3" x 23'0"
Area: 289 sq. ft
Counted as Living Area: No

Heated: Yes
Finished: Yes
Enclosed: Yes
Contiguous: No
Permitted: Yes
Wet Space: No
Addition: No
Conversion: No

7909 Sequoia Dr, Brax-Han Court, Roanoke, Roanoke County, Virginia, United States, 24019

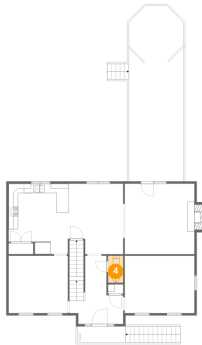
3 Floor 1 - Wc



Dimensions: 5'6" x 5'4"
Area: 30 sq. ft
Counted as Living Area: No

Heated: Yes
Finished: Yes
Enclosed: Yes
Contiguous: No
Permitted: Yes
Wet Space: Yes
Addition: No
Conversion: No

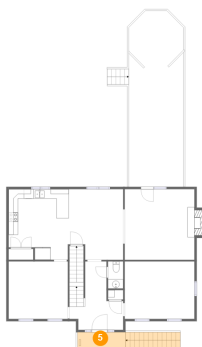
4 Floor 2 - Wc



Dimensions: 3'3" x 5'9"
Area: 18 sq. ft
Counted as Living Area:
Yes

Heated: Yes
Finished: Yes
Enclosed: Yes
Contiguous:
Yes
Permitted: Yes
Wet Space: Yes
Addition: No
Conversion: No

5 Floor 2 - Porch

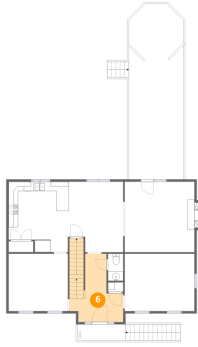


Dimensions: 10'2" x 3'5"
Area: 74 sq. ft
Counted as Living Area: No

Heated: No
Finished: Yes
Enclosed: No
Contiguous: Yes
Permitted: Yes
Wet Space: No
Addition: No
Conversion: No

7909 Sequoia Dr, Brax-Han Court, Roanoke, Roanoke County, Virginia, United States, 24019

6 Floor 2 - Foyer



Dimensions: 11'5" x 14'6"
Area: 138 sq. ft
Counted as Living Area:
Yes

Heated: Yes
Finished: Yes
Enclosed: Yes
Contiguous:
Yes
Permitted: Yes
Wet Space: No
Addition: No
Conversion: No

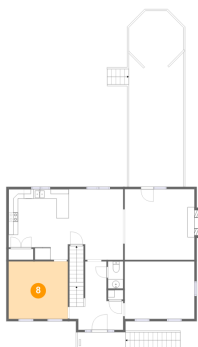
7 Floor 2 - Kitchen



Dimensions: 12'6" x 14'11"
Area: 173 sq. ft
Counted as Living Area:
Yes

Heated: Yes
Finished: Yes
Enclosed: Yes
Contiguous:
Yes
Permitted: Yes
Wet Space: No
Addition: No
Conversion: No

8 Floor 2 - Dining Room

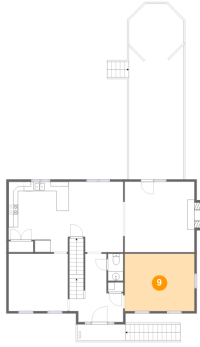


Dimensions: 12'7" x 12'2"
Area: 153 sq. ft
Counted as Living Area:
Yes

Heated: Yes
Finished: Yes
Enclosed: Yes
Contiguous:
Yes
Permitted: Yes
Wet Space: No
Addition: No
Conversion: No

7909 Sequoia Dr, Brax-Han Court, Roanoke, Roanoke County, Virginia, United States, 24019

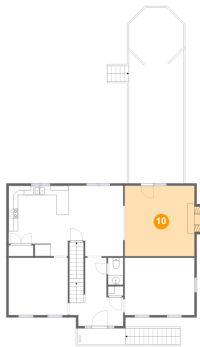
9 Floor 2 - Family Room



Dimensions: 14'9" x 12'2"
Area: 180 sq. ft
Counted as Living Area:
Yes

Heated: Yes
Finished: Yes
Enclosed: Yes
Contiguous:
Yes
Permitted: Yes
Wet Space: No
Addition: No
Conversion: No

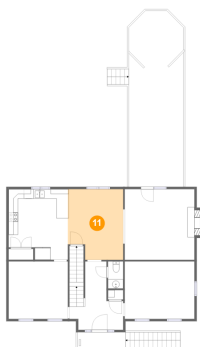
10 Floor 2 - Living Room



Dimensions: 14'9" x 14'11"
Area: 231 sq. ft
Counted as Living Area:
Yes

Heated: Yes
Finished: Yes
Enclosed: Yes
Contiguous:
Yes
Permitted: Yes
Wet Space: No
Addition: No
Conversion: No

11 Floor 2 - Breakfast Area



Dimensions: 11'9" x 14'11"
Area: 163 sq. ft
Counted as Living Area:
Yes

Heated: Yes
Finished: Yes
Enclosed: Yes
Contiguous:
Yes
Permitted: Yes
Wet Space: No
Addition: No
Conversion: No

7909 Sequoia Dr, Brax-Han Court, Roanoke, Roanoke County, Virginia, United States, 24019

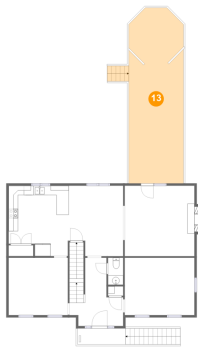
12 Floor 2 - Pantry



Dimensions: 5'2" x 2'3"
Area: 12 sq. ft
Counted as Living Area:
Yes

Heated: Yes
Finished: Yes
Enclosed: Yes
Contiguous:
Yes
Permitted: Yes
Wet Space: No
Addition: No
Conversion: No

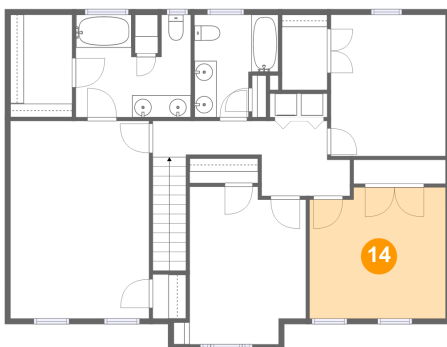
13 Floor 2 - Deck



Dimensions: 11'7" x 37'2"
Area: 432 sq. ft
Counted as Living Area: No

Heated: No
Finished: Yes
Enclosed: No
Contiguous: Yes
Permitted: Yes
Wet Space: No
Addition: No
Conversion: No

14 Floor 3 - Bedroom

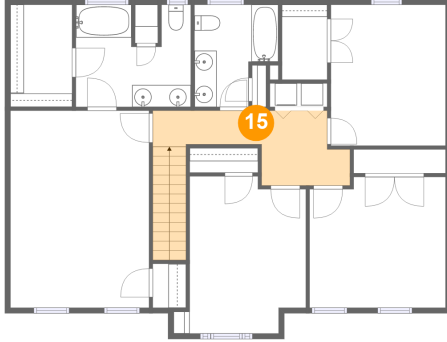


Dimensions: 12'4" x 11'10"
Area: 141 sq. ft
Counted as Living Area:
Yes

Heated: Yes
Finished: Yes
Enclosed: Yes
Contiguous:
Yes
Permitted: Yes
Wet Space: No
Addition: No
Conversion: No

7909 Sequoia Dr, Brax-Han Court, Roanoke, Roanoke County, Virginia, United States, 24019

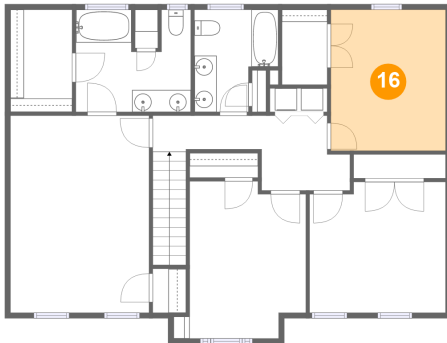
15 Floor 3 - Hall



Dimensions: 15'10" x 6'9"
Area: 109 sq. ft
Counted as Living Area:
Yes

Heated: Yes
Finished: Yes
Enclosed: Yes
Contiguous:
Yes
Permitted: Yes
Wet Space: No
Addition: No
Conversion: No

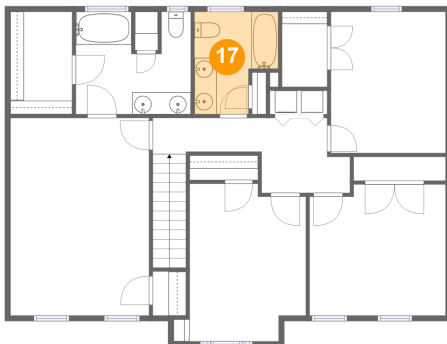
16 Floor 3 - Bedroom



Dimensions: 10'4" x 12'9"
Area: 133 sq. ft
Counted as Living Area:
Yes

Heated: Yes
Finished: Yes
Enclosed: Yes
Contiguous:
Yes
Permitted: Yes
Wet Space: No
Addition: No
Conversion: No

17 Floor 3 - Bath

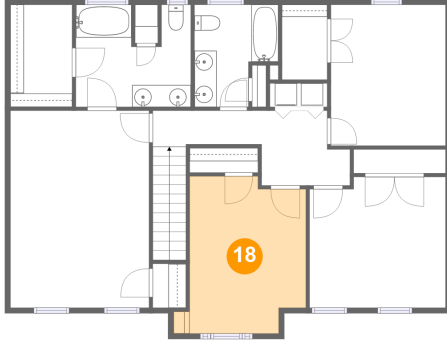


Dimensions: 7'7" x 9'3"
Area: 59 sq. ft
Counted as Living Area:
Yes

Heated: Yes
Finished: Yes
Enclosed: Yes
Contiguous:
Yes
Permitted: Yes
Wet Space: Yes
Addition: No
Conversion: No

7909 Sequoia Dr, Brax-Han Court, Roanoke, Roanoke County, Virginia, United States, 24019

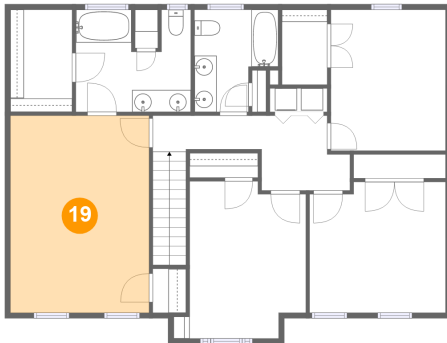
18 Floor 3 - Bedroom



Dimensions: 10'6" x 14'3"
Area: 142 sq. ft
Counted as Living Area:
Yes

Heated: Yes
Finished: Yes
Enclosed: Yes
Contiguous:
Yes
Permitted: Yes
Wet Space: No
Addition: No
Conversion: No

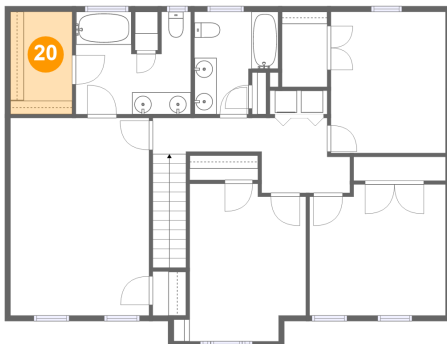
19 Floor 3 - Primary Bedroom



Dimensions: 12'7" x 17'10"
Area: 224 sq. ft
Counted as Living Area:
Yes

Heated: Yes
Finished: Yes
Enclosed: Yes
Contiguous:
Yes
Permitted: Yes
Wet Space: No
Addition: No
Conversion: No

20 Floor 3 - W.i.c.

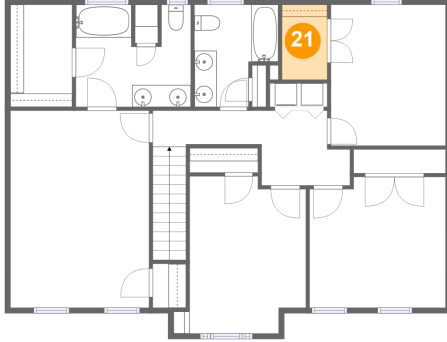


Dimensions: 5'7" x 9'3"
Area: 52 sq. ft
Counted as Living Area:
Yes

Heated: Yes
Finished: Yes
Enclosed: Yes
Contiguous:
Yes
Permitted: Yes
Wet Space: No
Addition: No
Conversion: No

7909 Sequoia Dr, Brax-Han Court, Roanoke, Roanoke County, Virginia, United States, 24019

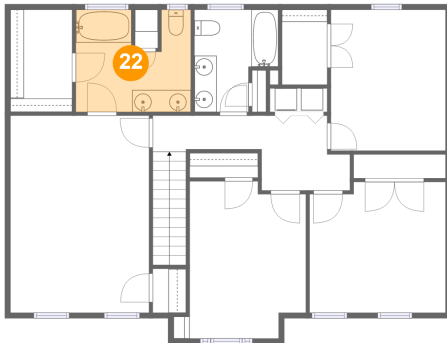
21 Floor 3 - W.i.c.



Dimensions: 4'1" x 6'9"
Area: 28 sq. ft
Counted as Living Area:
Yes

Heated: Yes
Finished: Yes
Enclosed: Yes
Contiguous:
Yes
Permitted: Yes
Wet Space: No
Addition: No
Conversion: No

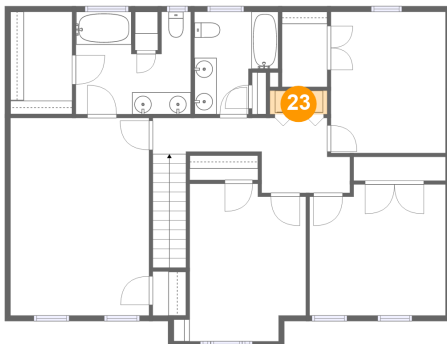
22 Floor 3 - Bath



Dimensions: 10'5" x 9'3"
Area: 86 sq. ft
Counted as Living Area:
Yes

Heated: Yes
Finished: Yes
Enclosed: Yes
Contiguous:
Yes
Permitted: Yes
Wet Space: Yes
Addition: No
Conversion: No

23 Floor 3 - Laundry



Dimensions: 5'2" x 2'2"
Area: 11 sq. ft
Counted as Living Area:
Yes

Heated: Yes
Finished: Yes
Enclosed: Yes
Contiguous:
Yes
Permitted: Yes
Wet Space: No
Addition: No
Conversion: No