

Home report

31 Lexington Court, Holmdel, Monmouth County, New Jersey,
United States, 07733




Total Area: 1293 sq. ft


Below Ground: 0 sq. ft, Floor 2: 638 sq. ft, Floor 3: 655 sq. ft

Excluded: Basement 626 sq. ft, Balcony 84 sq. ft, Porch 13 sq. ft, Walls: 119 sq. ft

Property summary

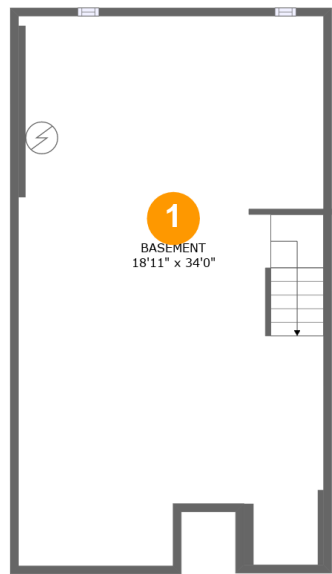
 **3** Floors

 **3** Bedrooms

 **2** Bathrooms

 **1** Half baths

31 Lexington Court, Holmdel, Monmouth County, New Jersey,
United States, 07733



Room dimensions

Floor 1 Below ground Total:0sqft Excluded: 626sqft

#		Max Dimensions	sqft	Included
1	Basement	18'11" x 34'0"	624 sq. ft	No

Home report

31 Lexington Court, Holmdel, Monmouth County, New Jersey,
United States, 07733



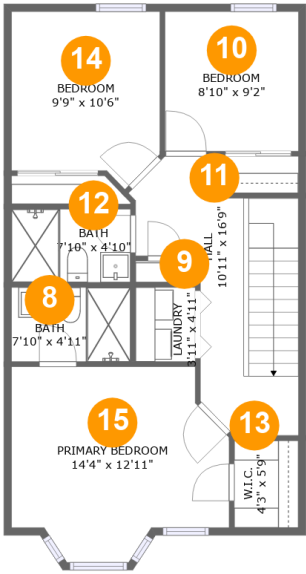
Room dimensions

Floor 2 Total:638sqft Excluded: 97sqft

#		Max Dimensions	sqft	Included
2	Eat-in Kitchen	9'7" x 14'5"	131 sq. ft	Yes
3	Foyer	9'0" x 8'9"	61 sq. ft	Yes
4	Living Room	18'11" x 21'5"	404 sq. ft	Yes
5	Balcony	15'11" x 5'3"	84 sq. ft	No
6	WC	4'11" x 5'1"	23 sq. ft	Yes
7	Porch	3'4" x 3'9"	13 sq. ft	No

Home report

31 Lexington Court, Holmdel, Monmouth County, New Jersey,
United States, 07733



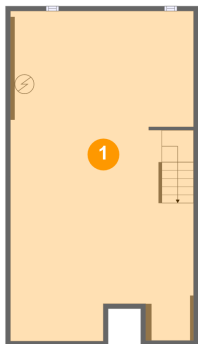
Room dimensions

Floor 3 Total:655sqft Excluded: 0sqft

#		Max Dimensions	sqft	Included
8	Bath	7'10" x 4'11"	38 sq. ft	Yes
9	Laundry	3'11" x 4'11"	19 sq. ft	Yes
10	Bedroom	8'10" x 9'2"	81 sq. ft	Yes
11	Hall	10'11" x 16'9"	127 sq. ft	Yes
12	Bath	7'10" x 4'10"	38 sq. ft	Yes
13	W.I.C.	4'3" x 5'9"	24 sq. ft	Yes
14	Bedroom	9'9" x 10'6"	103 sq. ft	Yes
15	Primary Bedroom	14'4" x 12'11"	157 sq. ft	Yes

31 Lexington Court, Holmdel, Monmouth County, New Jersey,
United States, 07733

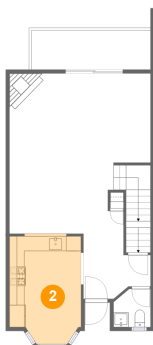
1 Floor 1 - Basement



Max Dimensions: 18'11" x 34'0"
Calculated Area: 624 sq. ft
Included: No

Heated: Yes
Finished: No
Enclosed: Yes
Contiguous: Yes
Permitted: Yes
Wet space: No
Addition: No
Conversion: No

2 Floor 2 - Eat-in Kitchen

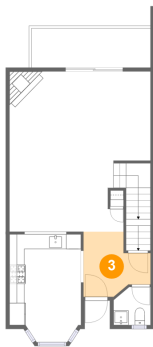


Max Dimensions: 9'7" x 14'5"
Calculated Area: 131 sq. ft
Included: Yes

Heated: Yes
Finished: Yes
Enclosed: Yes
Contiguous: Yes
Permitted: Yes
Wet space: No
Addition: No
Conversion: No

31 Lexington Court, Holmdel, Monmouth County, New Jersey,
United States, 07733

3 Floor 2 - Foyer



Max Dimensions: 9'0" x 8'9"
Calculated Area: 61 sq. ft
Included: Yes

Heated: Yes
Finished: Yes
Enclosed: Yes
Contiguous: Yes
Permitted: Yes
Wet space: No
Addition: No
Conversion: No

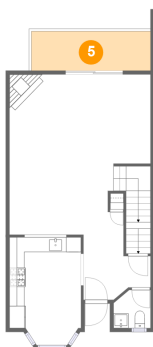
4 Floor 2 - Living Room



Max Dimensions: 18'11" x 21'5"
Calculated Area: 404 sq. ft
Included: Yes

Heated: Yes
Finished: Yes
Enclosed: Yes
Contiguous: Yes
Permitted: Yes
Wet space: No
Addition: No
Conversion: No

5 Floor 2 - Balcony

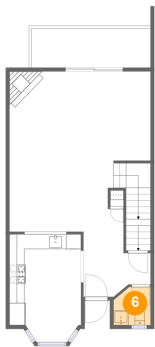


Max Dimensions: 15'11" x 5'3"
Calculated Area: 84 sq. ft
Included: No

Heated: No
Finished: Yes
Enclosed: No
Contiguous: Yes
Permitted: Yes
Wet space: No
Addition: No
Conversion: No

31 Lexington Court, Holmdel, Monmouth County, New Jersey,
United States, 07733

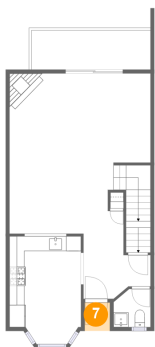
6 Floor 2 - WC



Max Dimensions: 4'11" x 5'1"
Calculated Area: 23 sq. ft
Included: Yes

Heated: Yes
Finished: Yes
Enclosed: Yes
Contiguous: Yes
Permitted: Yes
Wet space: Yes
Addition: No
Conversion: No

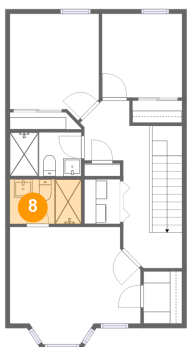
7 Floor 2 - Porch



Max Dimensions: 3'4" x 3'9"
Calculated Area: 13 sq. ft
Included: No

Heated: No
Finished: Yes
Enclosed: No
Contiguous: Yes
Permitted: Yes
Wet space: No
Addition: No
Conversion: No

8 Floor 3 - Bath



Max Dimensions: 7'10" x 4'11"
Calculated Area: 38 sq. ft
Included: Yes

Heated: Yes
Finished: Yes
Enclosed: Yes
Contiguous: Yes
Permitted: Yes
Wet space: Yes
Addition: No
Conversion: No

31 Lexington Court, Holmdel, Monmouth County, New Jersey,
United States, 07733

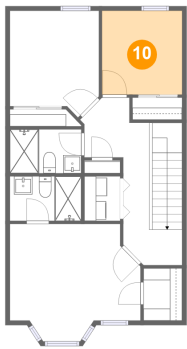
9 Floor 3 - Laundry



Max Dimensions: 3'11" x 4'11"
Calculated Area: 19 sq. ft
Included: Yes

Heated: Yes
Finished: Yes
Enclosed: Yes
Contiguous: Yes
Permitted: Yes
Wet space: No
Addition: No
Conversion: No

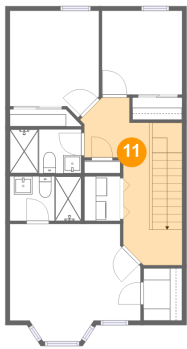
10 Floor 3 - Bedroom



Max Dimensions: 8'10" x 9'2"
Calculated Area: 81 sq. ft
Included: Yes

Heated: Yes
Finished: Yes
Enclosed: Yes
Contiguous: Yes
Permitted: Yes
Wet space: No
Addition: No
Conversion: No

11 Floor 3 - Hall



Max Dimensions: 10'11" x 16'9"
Calculated Area: 127 sq. ft
Included: Yes

Heated: Yes
Finished: Yes
Enclosed: Yes
Contiguous: Yes
Permitted: Yes
Wet space: No
Addition: No
Conversion: No

31 Lexington Court, Holmdel, Monmouth County, New Jersey,
United States, 07733

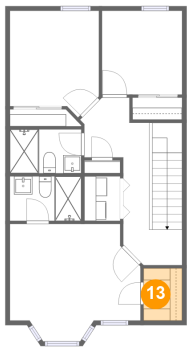
12 Floor 3 - Bath



Max Dimensions: 7'10" x 4'10"
Calculated Area: 38 sq. ft
Included: Yes

Heated: Yes
Finished: Yes
Enclosed: Yes
Contiguous: Yes
Permitted: Yes
Wet space: Yes
Addition: No
Conversion: No

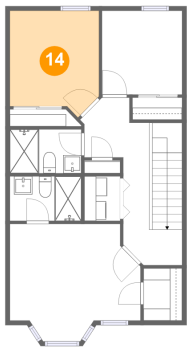
13 Floor 3 - W.I.C.



Max Dimensions: 4'3" x 5'9"
Calculated Area: 24 sq. ft
Included: Yes

Heated: Yes
Finished: Yes
Enclosed: Yes
Contiguous: Yes
Permitted: Yes
Wet space: No
Addition: No
Conversion: No

14 Floor 3 - Bedroom

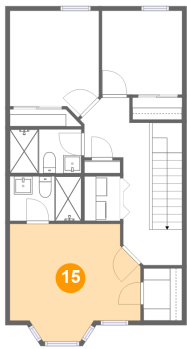


Max Dimensions: 9'9" x 10'6"
Calculated Area: 103 sq. ft
Included: Yes

Heated: Yes
Finished: Yes
Enclosed: Yes
Contiguous: Yes
Permitted: Yes
Wet space: No
Addition: No
Conversion: No

31 Lexington Court, Holmdel, Monmouth County, New Jersey,
United States, 07733

15 Floor 3 - Primary Bedroom



Max Dimensions: 14'4" x 12'11"
Calculated Area: 157 sq. ft
Included: Yes

Heated: Yes
Finished: Yes
Enclosed: Yes
Contiguous: Yes
Permitted: Yes
Wet space: No
Addition: No
Conversion: No