




2927 Tully Drive, Glen Cove, Roanoke, Roanoke  
County, Virginia, United States, 24019




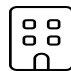
Property summary


 **0** Garages

 **4** Bedrooms

 **2** Bathrooms

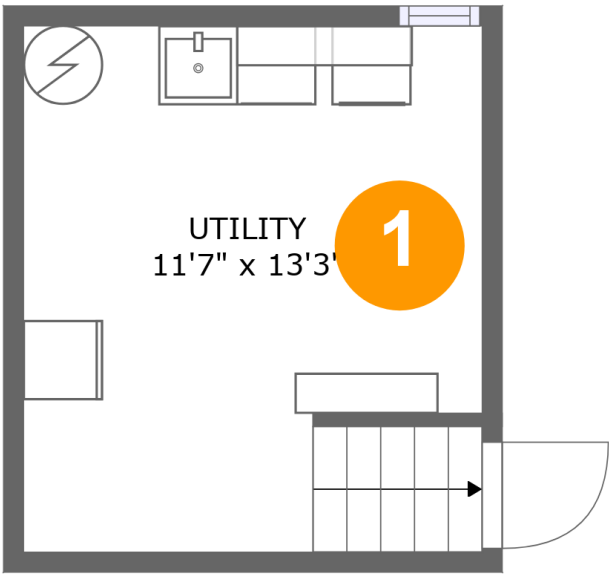
 **0** Half baths

 **4** Floors

 **1,784** Gross living area sqft

 **2,870** Total sqft

2927 Tully Drive, Glen Cove, Roanoke, Roanoke  
County, Virginia, United States, 24019

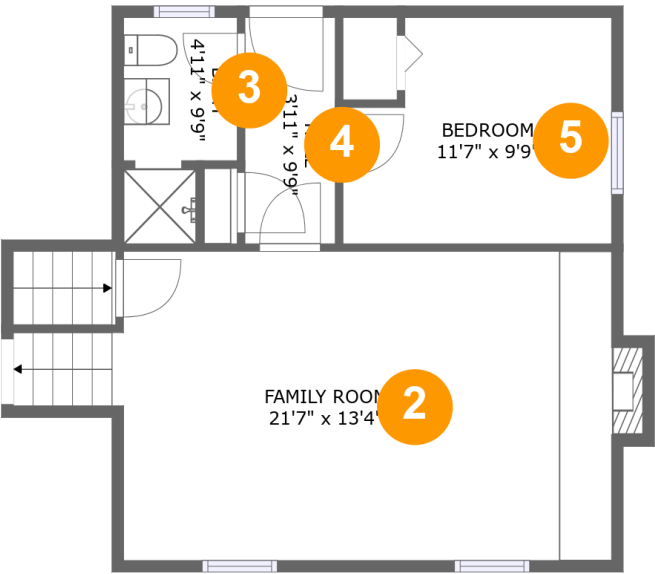


Room dimensions

Floor 1 Total sqft: 180    Living area: 0

#		Dimensions	sqft	Counted as living area
1	Utility	11'7" x 13'3"	152 sq. ft	No

2927 Tully Drive, Glen Cove, Roanoke, Roanoke  
County, Virginia, United States, 24019

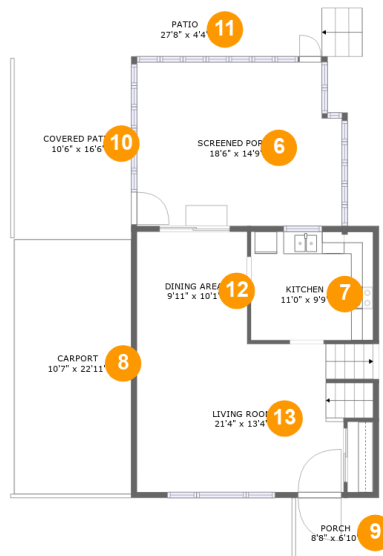


Room dimensions

Floor 2 Total sqft: 583    Living area: 577

#		Dimensions	sqft	Counted as living area
2	Family Room	21'7" x 13'4"	302 sq. ft	Yes
3	Bath	4'11" x 9'9"	41 sq. ft	Yes
4	Hall	3'11" x 9'9"	38 sq. ft	Yes
5	Bedroom	11'7" x 9'9"	103 sq. ft	Yes

# 2927 Tully Drive, Glen Cove, Roanoke, Roanoke County, Virginia, United States, 24019



## Room dimensions

### Floor 3

Total sqft: 1445    Living area: 545

#		Dimensions	sqft	Counted as living area
6	Screened Porch	18'6" x 14'9"	263 sq. ft	No
7	Kitchen	11'0" x 9'9"	108 sq. ft	Yes
8	Carport	10'7" x 22'11"	242 sq. ft	No
9	Porch	8'8" x 6'10"	59 sq. ft	No
10	Covered Patio	10'6" x 16'6"	174 sq. ft	No
11	Patio	27'8" x 4'4"	137 sq. ft	No
12	Dining Area	9'11" x 10'1"	100 sq. ft	Yes
13	Living Room	21'4" x 13'4"	265 sq. ft	Yes

2927 Tully Drive, Glen Cove, Roanoke, Roanoke  
County, Virginia, United States, 24019



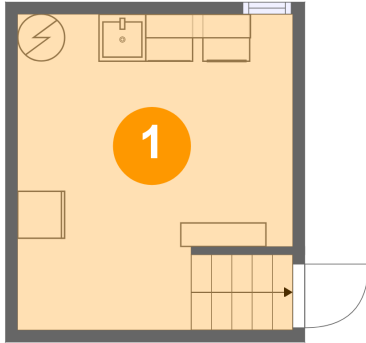
Room dimensions

Floor 4 Total sqft: 662    Living area: 662

#		Dimensions	sqft	Counted as living area
14	Hall	15'11" x 5'11"	59 sq. ft	Yes
15	Bedroom	10'3" x 12'8"	130 sq. ft	Yes
16	Bath	7'8" x 11'7"	61 sq. ft	Yes
17	Bedroom	11'1" x 9'1"	101 sq. ft	Yes
18	Primary Bedroom	13'8" x 11'7"	159 sq. ft	Yes

2927 Tully Drive, Glen Cove, Roanoke, Roanoke  
County, Virginia, United States, 24019

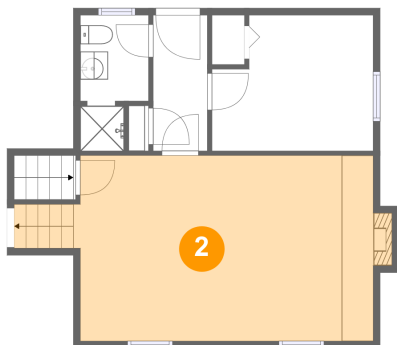
## 1 Floor 1 - Utility



Dimensions: 11'7" x 13'3"  
Area: 152 sq. ft  
Counted as living area: No

Heated: Yes  
Finished: No  
Enclosed: Yes  
Contiguous: Yes  
Permitted: Yes  
Wet space: No  
Addition: No  
Conversion: No

## 2 Floor 2 - Family Room

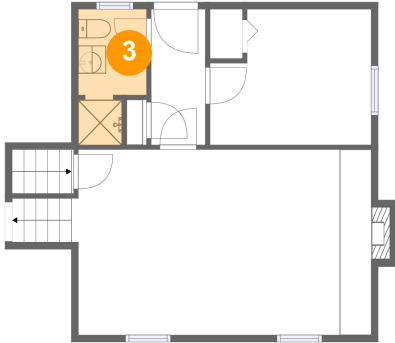


Dimensions: 21'7" x 13'4"  
Area: 302 sq. ft  
Counted as living area: Yes

Heated: Yes  
Finished: Yes  
Enclosed: Yes  
Contiguous: Yes  
Permitted: Yes  
Wet space: No  
Addition: No  
Conversion: No

2927 Tully Drive, Glen Cove, Roanoke, Roanoke  
County, Virginia, United States, 24019

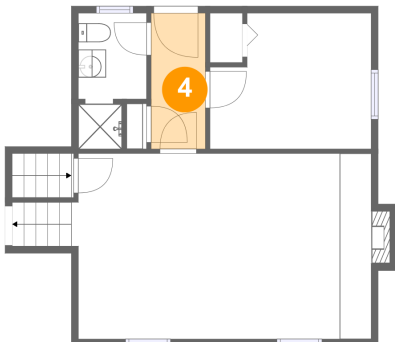
### 3 Floor 2 - Bath



Dimensions: 4'11" x 9'9"  
Area: 41 sq. ft  
Counted as living area: Yes

Heated: Yes  
Finished: Yes  
Enclosed: Yes  
Contiguous: Yes  
Permitted: Yes  
Wet space: Yes  
Addition: No  
Conversion: No

### 4 Floor 2 - Hall



Dimensions: 3'11" x 9'9"  
Area: 38 sq. ft  
Counted as living area: Yes

Heated: Yes  
Finished: Yes  
Enclosed: Yes  
Contiguous: Yes  
Permitted: Yes  
Wet space: No  
Addition: No  
Conversion: No

### 5 Floor 2 - Bedroom

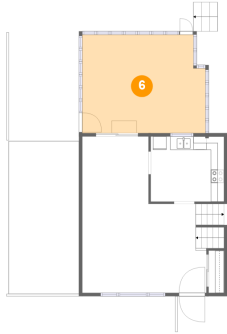


Dimensions: 11'7" x 9'9"  
Area: 103 sq. ft  
Counted as living area: Yes

Heated: Yes  
Finished: Yes  
Enclosed: Yes  
Contiguous: Yes  
Permitted: Yes  
Wet space: No  
Addition: No  
Conversion: No

2927 Tully Drive, Glen Cove, Roanoke, Roanoke  
County, Virginia, United States, 24019

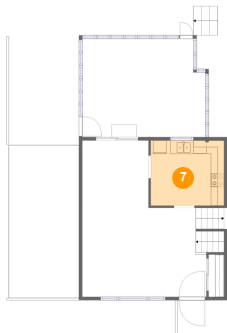
### 6 Floor 3 - Screened Porch



Dimensions: 18'6" x 14'9"  
Area: 263 sq. ft  
Counted as living area: No

Heated: No  
Finished: Yes  
Enclosed: No  
Contiguous: Yes  
Permitted: Yes  
Wet space: No  
Addition: No  
Conversion: No

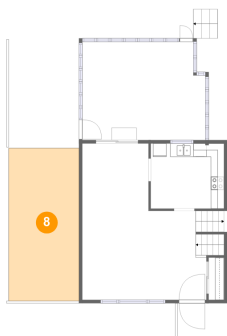
### 7 Floor 3 - Kitchen



Dimensions: 11'0" x 9'9"  
Area: 108 sq. ft  
Counted as living area: Yes

Heated: Yes  
Finished: Yes  
Enclosed: Yes  
Contiguous: Yes  
Permitted: Yes  
Wet space: No  
Addition: No  
Conversion: No

### 8 Floor 3 - Carport



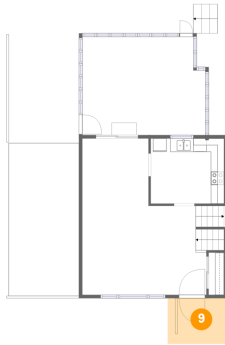
Dimensions: 10'7" x 22'11"  
Area: 242 sq. ft  
Counted as living area: No

Heated: No  
Finished: Yes  
Enclosed: No  
Contiguous: Yes  
Permitted: Yes  
Wet space: No  
Addition: No  
Conversion: No



2927 Tully Drive, Glen Cove, Roanoke, Roanoke  
County, Virginia, United States, 24019

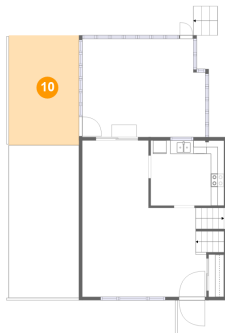
### 9 Floor 3 - Porch



Dimensions: 8'8" x 6'10"  
Area: 59 sq. ft  
Counted as living area: No

Heated: No  
Finished: Yes  
Enclosed: No  
Contiguous: Yes  
Permitted: Yes  
Wet space: No  
Addition: No  
Conversion: No

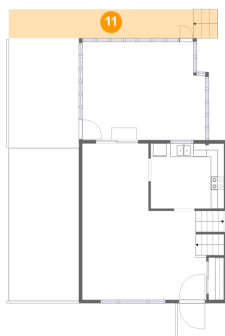
### 10 Floor 3 - Covered Patio



Dimensions: 10'6" x 16'6"  
Area: 174 sq. ft  
Counted as living area: No

Heated: No  
Finished: Yes  
Enclosed: No  
Contiguous: Yes  
Permitted: Yes  
Wet space: No  
Addition: No  
Conversion: No

### 11 Floor 3 - Patio

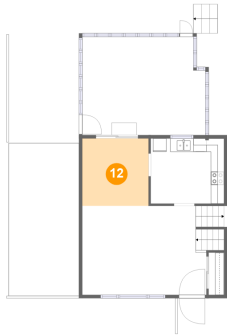


Dimensions: 27'8" x 4'4"  
Area: 137 sq. ft  
Counted as living area: No

Heated: No  
Finished: Yes  
Enclosed: No  
Contiguous: Yes  
Permitted: Yes  
Wet space: No  
Addition: No  
Conversion: No

2927 Tully Drive, Glen Cove, Roanoke, Roanoke  
County, Virginia, United States, 24019

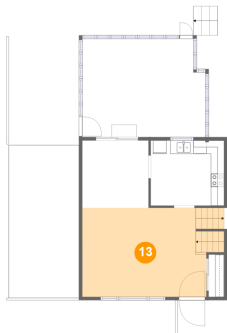
### 12 Floor 3 - Dining Area



Dimensions: 9'11" x 10'1"  
Area: 100 sq. ft  
Counted as living area: Yes

Heated: Yes  
Finished: Yes  
Enclosed: Yes  
Contiguous: Yes  
Permitted: Yes  
Wet space: No  
Addition: No  
Conversion: No

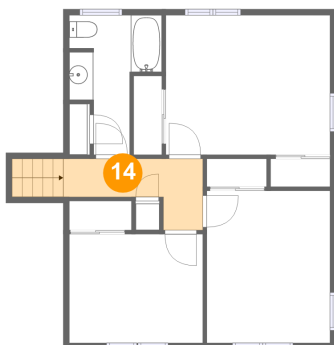
### 13 Floor 3 - Living Room



Dimensions: 21'4" x 13'4"  
Area: 265 sq. ft  
Counted as living area: Yes

Heated: Yes  
Finished: Yes  
Enclosed: Yes  
Contiguous: Yes  
Permitted: Yes  
Wet space: No  
Addition: No  
Conversion: No

### 14 Floor 4 - Hall

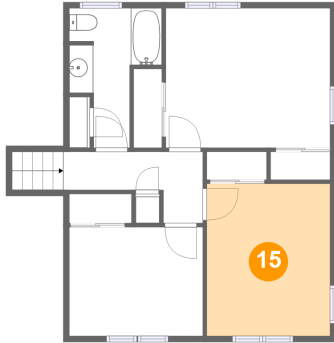


Dimensions: 15'11" x 5'11"  
Area: 59 sq. ft  
Counted as living area: Yes

Heated: Yes  
Finished: Yes  
Enclosed: Yes  
Contiguous: Yes  
Permitted: Yes  
Wet space: No  
Addition: No  
Conversion: No

2927 Tully Drive, Glen Cove, Roanoke, Roanoke  
County, Virginia, United States, 24019

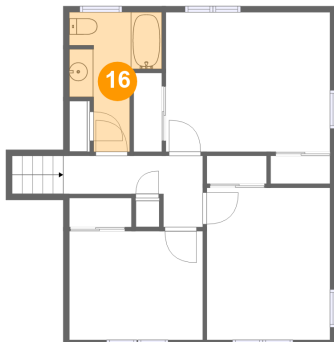
### 15 Floor 4 - Bedroom



Dimensions: 10'3" x 12'8"  
Area: 130 sq. ft  
Counted as living area: Yes

Heated: Yes  
Finished: Yes  
Enclosed: Yes  
Contiguous: Yes  
Permitted: Yes  
Wet space: No  
Addition: No  
Conversion: No

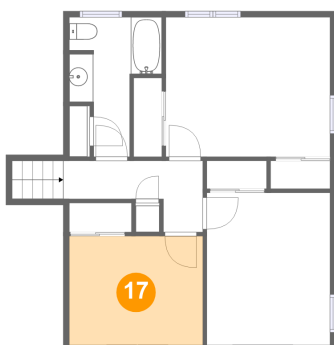
### 16 Floor 4 - Bath



Dimensions: 7'8" x 11'7"  
Area: 61 sq. ft  
Counted as living area: Yes

Heated: Yes  
Finished: Yes  
Enclosed: Yes  
Contiguous: Yes  
Permitted: Yes  
Wet space: Yes  
Addition: No  
Conversion: No

### 17 Floor 4 - Bedroom

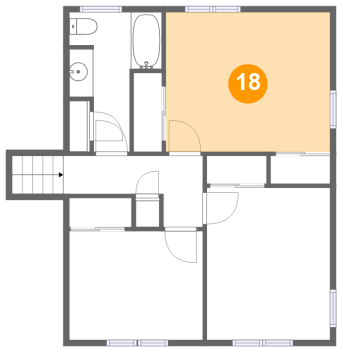


Dimensions: 11'1" x 9'1"  
Area: 101 sq. ft  
Counted as living area: Yes

Heated: Yes  
Finished: Yes  
Enclosed: Yes  
Contiguous: Yes  
Permitted: Yes  
Wet space: No  
Addition: No  
Conversion: No

2927 Tully Drive, Glen Cove, Roanoke, Roanoke  
County, Virginia, United States, 24019

**18** Floor 4 - Primary Bedroom



Dimensions: 13'8" x 11'7"  
Area: 159 sq. ft  
Counted as living area: Yes

Heated: Yes  
Finished: Yes  
Enclosed: Yes  
Contiguous: Yes  
Permitted: Yes  
Wet space: No  
Addition: No  
Conversion: No