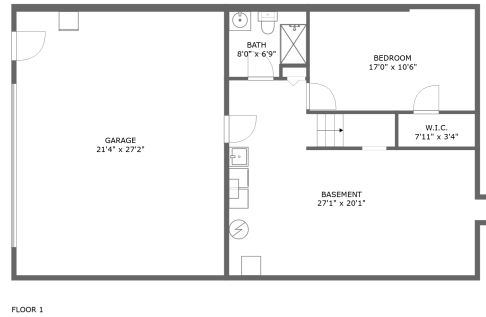



7350 Grassy Hill Road, Helm, Rocky Mount, Franklin County, Virginia, United States, 24065



Property summary


 **1** Garages

 **4** Bedrooms

 **3** Bathrooms

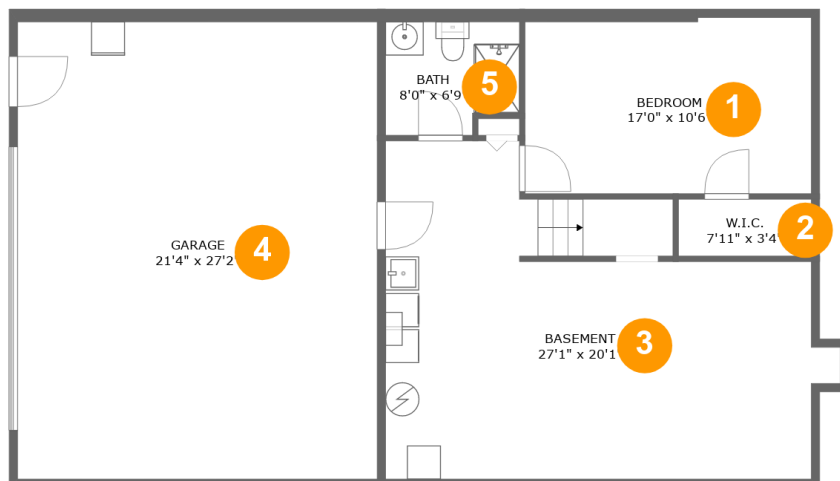
 **0** Half baths

 **2** Floors

 **1,386** Gross living area sqft

 **3,128** Total sqft

7350 Grassy Hill Road, Helm, Rocky Mount, Franklin County, Virginia, United States, 24065



Room dimensions

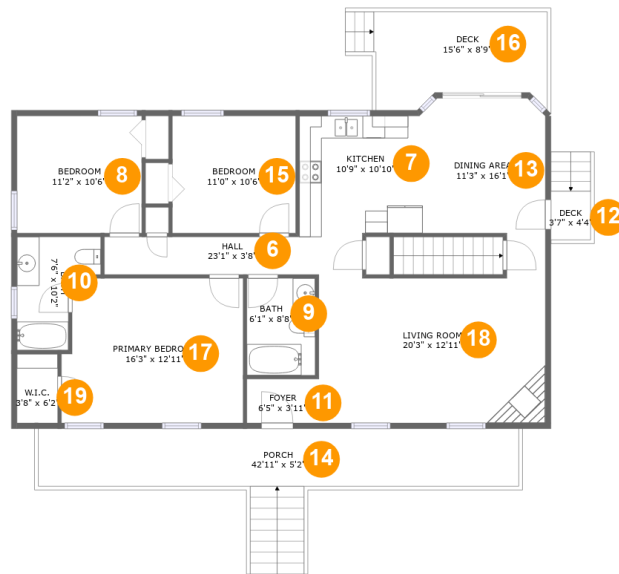
Floor 1

Total sqft: 1377

Living area: 0

#		Dimensions	sqft	Counted as living area
1	Bedroom	17'0" x 10'6"	175 sq. ft	No
2	Cl	7'11" x 3'4"	27 sq. ft	No
3	Basement	27'1" x 20'1"	419 sq. ft	No
4	Garage	21'4" x 27'2"	581 sq. ft	No
5	Bath	8'0" x 6'9"	50 sq. ft	No

7350 Grassy Hill Road, Helm, Rocky Mount, Franklin County, Virginia, United States, 24065



Room dimensions

Floor 2

Total sqft: 1751 Living area: 1386

#		Dimensions	sqft	Counted as living area
6	Hall	23'1" x 3'8"	79 sq. ft	Yes
7	Kitchen	10'9" x 10'10"	116 sq. ft	Yes
8	Bedroom	11'2" x 10'6"	117 sq. ft	Yes
9	Bath	6'1" x 8'8"	53 sq. ft	Yes
10	Bath	7'6" x 10'2"	56 sq. ft	Yes
11	Entry	6'5" x 3'11"	25 sq. ft	Yes
12	Outdoor	3'7" x 4'4"	15 sq. ft	No
13	Dining Room	11'3" x 16'1"	149 sq. ft	Yes
14	Outdoor	42'11" x 5'2"	221 sq. ft	No
15	Bedroom	11'0" x 10'6"	115 sq. ft	Yes
16	Outdoor	15'6" x 8'9"	129 sq. ft	No

Scan captured on Tue, 12 Nov 2024 16:58:22 GMT

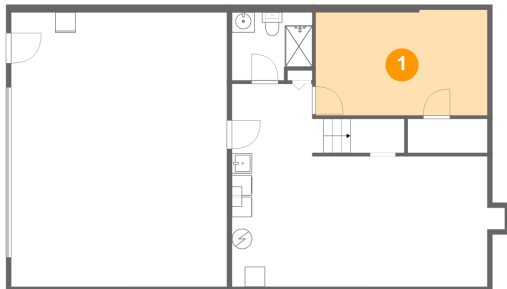
Information is calculated by Cubicasa technology deemed highly reliable but not guaranteed.

7350 Grassy Hill Road, Helm, Rocky Mount, Franklin County, Virginia, United States, 24065

#		Dimensions	sqft	Counted as living area
17	Bedroom	16'3" x 12'11"	203 sq. ft	Yes
18	Living Room	20'3" x 12'11"	261 sq. ft	Yes
19	Cl	3'8" x 6'2"	22 sq. ft	Yes

7350 Grassy Hill Road, Helm, Rocky Mount, Franklin County, Virginia, United States, 24065

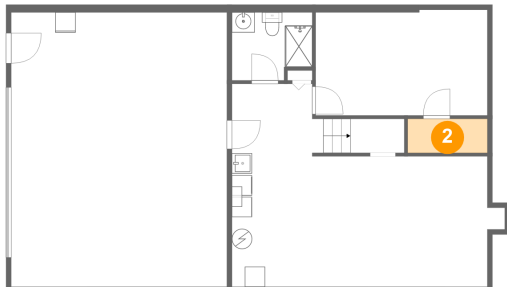
1 Floor 1 - Bedroom



Dimensions: 17'0" x 10'6"
Area: 175 sq. ft
Counted as living area: No

Heated: Yes
Finished: Yes
Enclosed: Yes
Contiguous: No
Permitted: Yes
Wet space: No
Addition: No
Conversion: No

2 Floor 1 - Cl

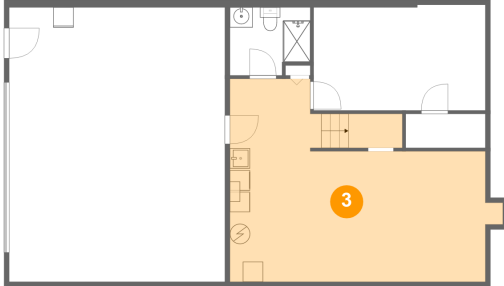


Dimensions: 7'11" x 3'4"
Area: 27 sq. ft
Counted as living area: No

Heated: Yes
Finished: Yes
Enclosed: Yes
Contiguous: No
Permitted: Yes
Wet space: No
Addition: No
Conversion: No

7350 Grassy Hill Road, Helm, Rocky Mount, Franklin County, Virginia, United States, 24065

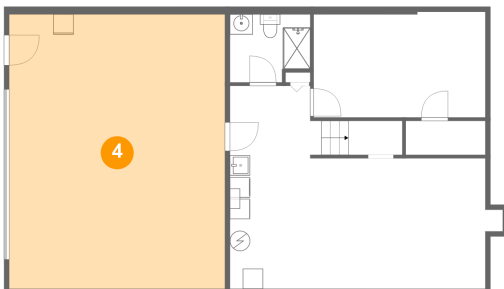
3 Floor 1 - Basement



Dimensions: 27'1" x 20'1"
Area: 419 sq. ft
Counted as living area: No

Heated: Yes
Finished: No
Enclosed: Yes
Contiguous: Yes
Permitted: Yes
Wet space: No
Addition: No
Conversion: No

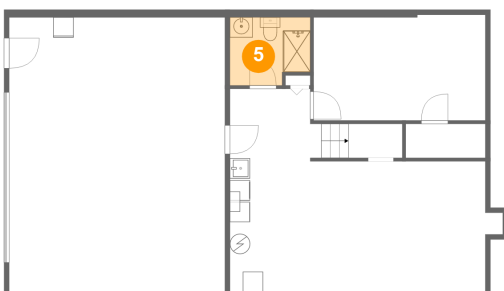
4 Floor 1 - Garage



Dimensions: 21'4" x 27'2"
Area: 581 sq. ft
Counted as living area: No

Heated: No
Finished: No
Enclosed: Yes
Contiguous: Yes
Permitted: Yes
Wet space: No
Addition: No
Conversion: No

5 Floor 1 - Bath

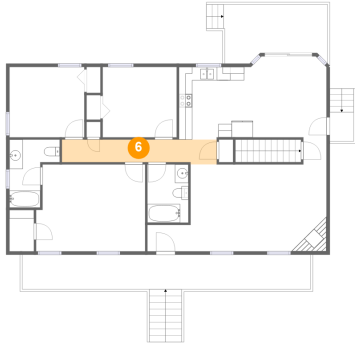


Dimensions: 8'0" x 6'9"
Area: 50 sq. ft
Counted as living area: No

Heated: Yes
Finished: Yes
Enclosed: Yes
Contiguous: No
Permitted: Yes
Wet space: Yes
Addition: No
Conversion: No

7350 Grassy Hill Road, Helm, Rocky Mount, Franklin County, Virginia, United States, 24065

6 Floor 2 - Hall



Dimensions: 23'1" x 3'8"
Area: 79 sq. ft
Counted as living area: Yes

Heated: Yes
Finished: Yes
Enclosed: Yes
Contiguous: Yes
Permitted: Yes
Wet space: No
Addition: No
Conversion: No

7 Floor 2 - Kitchen



Dimensions: 10'9" x 10'10"
Area: 116 sq. ft
Counted as living area: Yes

Heated: Yes
Finished: Yes
Enclosed: Yes
Contiguous: Yes
Permitted: Yes
Wet space: No
Addition: No
Conversion: No

8 Floor 2 - Bedroom



Dimensions: 11'2" x 10'6"
Area: 117 sq. ft
Counted as living area: Yes

Heated: Yes
Finished: Yes
Enclosed: Yes
Contiguous: Yes
Permitted: Yes
Wet space: No
Addition: No
Conversion: No

7350 Grassy Hill Road, Helm, Rocky Mount, Franklin County, Virginia, United States, 24065

9 Floor 2 - Bath



Dimensions: 6'1" x 8'8"
Area: 53 sq. ft
Counted as living area: Yes

Heated: Yes
Finished: Yes
Enclosed: Yes
Contiguous: Yes
Permitted: Yes
Wet space: Yes
Addition: No
Conversion: No

10 Floor 2 - Bath



Dimensions: 7'6" x 10'2"
Area: 56 sq. ft
Counted as living area: Yes

Heated: Yes
Finished: Yes
Enclosed: Yes
Contiguous: Yes
Permitted: Yes
Wet space: Yes
Addition: No
Conversion: No

11 Floor 2 - Entry



Dimensions: 6'5" x 3'11"
Area: 25 sq. ft
Counted as living area: Yes

Heated: Yes
Finished: Yes
Enclosed: Yes
Contiguous: Yes
Permitted: Yes
Wet space: No
Addition: No
Conversion: No

7350 Grassy Hill Road, Helm, Rocky Mount, Franklin County, Virginia, United States, 24065

12 Floor 2 - Outdoor



Dimensions: 3'7" x 4'4"
Area: 15 sq. ft
Counted as living area: No

Heated: No
Finished: Yes
Enclosed: No
Contiguous: Yes
Permitted: Yes
Wet space: No
Addition: No
Conversion: No

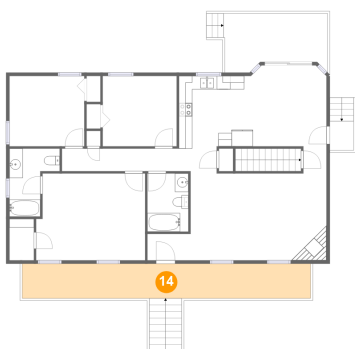
13 Floor 2 - Dining Room



Dimensions: 11'3" x 16'1"
Area: 149 sq. ft
Counted as living area: Yes

Heated: Yes
Finished: Yes
Enclosed: Yes
Contiguous: Yes
Permitted: Yes
Wet space: No
Addition: No
Conversion: No

14 Floor 2 - Outdoor

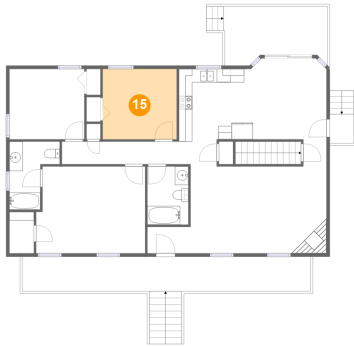


Dimensions: 42'11" x 5'2"
Area: 221 sq. ft
Counted as living area: No

Heated: No
Finished: Yes
Enclosed: No
Contiguous: Yes
Permitted: Yes
Wet space: No
Addition: No
Conversion: No

7350 Grassy Hill Road, Helm, Rocky Mount, Franklin County, Virginia, United States, 24065

15 Floor 2 - Bedroom



Dimensions: 11'0" x 10'6"
Area: 115 sq. ft
Counted as living area: Yes

Heated: Yes
Finished: Yes
Enclosed: Yes
Contiguous: Yes
Permitted: Yes
Wet space: No
Addition: No
Conversion: No

16 Floor 2 - Outdoor



Dimensions: 15'6" x 8'9"
Area: 129 sq. ft
Counted as living area: No

Heated: No
Finished: Yes
Enclosed: No
Contiguous: Yes
Permitted: Yes
Wet space: No
Addition: No
Conversion: No

17 Floor 2 - Bedroom



Dimensions: 16'3" x 12'11"
Area: 203 sq. ft
Counted as living area: Yes

Heated: Yes
Finished: Yes
Enclosed: Yes
Contiguous: Yes
Permitted: Yes
Wet space: No
Addition: No
Conversion: No

7350 Grassy Hill Road, Helm, Rocky Mount, Franklin County, Virginia, United States, 24065

18 Floor 2 - Living Room



Dimensions: 20'3" x 12'11"
Area: 261 sq. ft
Counted as living area: Yes

Heated: Yes
Finished: Yes
Enclosed: Yes
Contiguous: Yes
Permitted: Yes
Wet space: No
Addition: No
Conversion: No

19 Floor 2 - Cl



Dimensions: 3'8" x 6'2"
Area: 22 sq. ft
Counted as living area: Yes

Heated: Yes
Finished: Yes
Enclosed: Yes
Contiguous: Yes
Permitted: Yes
Wet space: No
Addition: No
Conversion: No