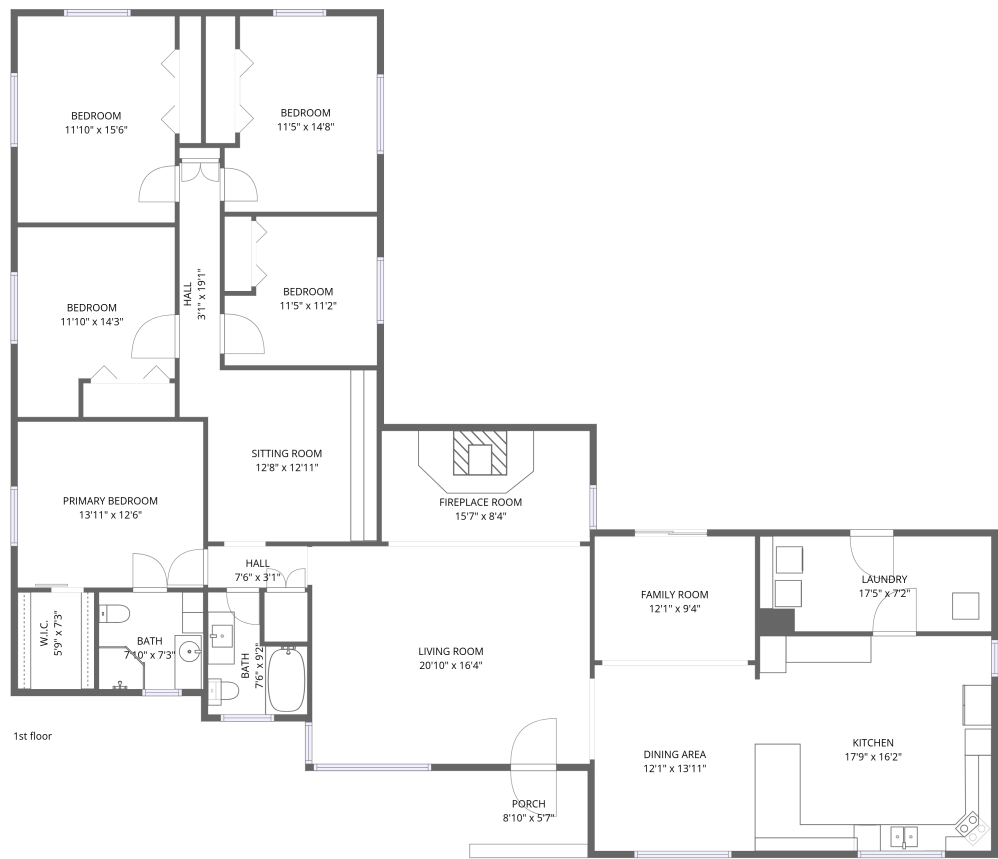


Home data report

1360 Oxyoke Rd,Grants Pass,OR,US



Total Area: 2511 sq. ft

1st Floor: 2511 sq. ft

Excluded: Porch 49 sq. ft, Walls: 136 sq. ft

Property summary

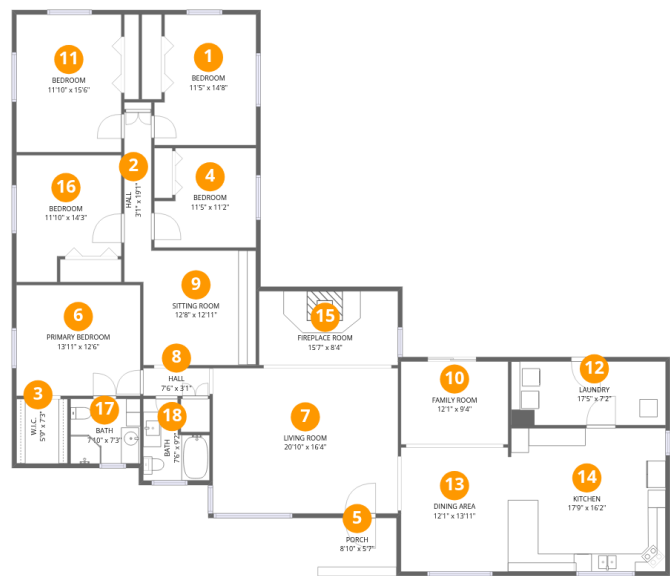
 **1** Floors

 **5** Bedrooms

 **2** Bathrooms

Home data report

1360 Oxyoke Rd,Grants Pass,OR,US



Room dimensions

Floor 1 Total:2511sqft Excluded: 49sqft

#		Dimensions	sqft	Counted as living area
1	Bedroom	11'5" x 14'8"	157 sq. ft	Yes
2	Hall	3'1" x 19'1"	56 sq. ft	Yes
3	W.I.C.	5'9" x 7'3"	42 sq. ft	Yes
4	Bedroom	11'5" x 11'2"	114 sq. ft	Yes
5	Porch	8'10" x 5'7"	49 sq. ft	No
6	Primary Bedroom	13'11" x 12'6"	174 sq. ft	Yes
7	Living Room	20'10" x 16'4"	341 sq. ft	Yes
8	Hall	7'6" x 3'1"	23 sq. ft	Yes
9	Sitting Room	12'8" x 12'11"	162 sq. ft	Yes
10	Family Room	12'1" x 9'4"	112 sq. ft	Yes
11	Bedroom	11'10" x 15'6"	183 sq. ft	Yes

Home data report

1360 Oxyoke Rd,Grants Pass,OR,US

#		Dimensions	sqft	Counted as living area
12	Laundry	17'5" x 7'2"	124 sq. ft	Yes
13	Dining Area	12'1" x 13'11"	168 sq. ft	Yes
14	Kitchen	17'9" x 16'2"	285 sq. ft	Yes
15	Fireplace Room	15'7" x 8'4"	130 sq. ft	Yes
16	Bedroom	11'10" x 14'3"	147 sq. ft	Yes
17	Bath	7'10" x 7'3"	57 sq. ft	Yes
18	Bath	7'6" x 9'2"	54 sq. ft	Yes

1 Floor 1 - Bedroom



Dimensions: 11'5" x 14'8"
Area: 157 sq. ft
Counted as living area: Yes

Heated: Yes
Finished: Yes
Enclosed: Yes
Contiguous: Yes
Permitted: Yes
Wet space: No
Addition: No
Conversion: No

2 Floor 1 - Hall



Dimensions: 3'1" x 19'1"
Area: 56 sq. ft
Counted as living area: Yes

Heated: Yes
Finished: Yes
Enclosed: Yes
Contiguous: Yes
Permitted: Yes
Wet space: No
Addition: No
Conversion: No

3 Floor 1 - W.I.C.



Dimensions: 5'9" x 7'3"
Area: 42 sq. ft
Counted as living area: Yes

Heated: Yes
Finished: Yes
Enclosed: Yes
Contiguous: Yes
Permitted: Yes
Wet space: No
Addition: No
Conversion: No

4 Floor 1 - Bedroom



Dimensions: 11'5" x 11'2"
Area: 114 sq. ft
Counted as living area: Yes

Heated: Yes
Finished: Yes
Enclosed: Yes
Contiguous: Yes
Permitted: Yes
Wet space: No
Addition: No
Conversion: No

5 Floor 1 - Porch



Dimensions: 8'10" x 5'7"
Area: 49 sq. ft
Counted as living area: No

Heated: No
Finished: No
Enclosed: No
Contiguous: Yes
Permitted: Yes
Wet space: No
Addition: No
Conversion: No

6 Floor 1 - Primary Bedroom



Dimensions: 13'11" x 12'6"
Area: 174 sq. ft
Counted as living area: Yes

Heated: Yes
Finished: Yes
Enclosed: Yes
Contiguous: Yes
Permitted: Yes
Wet space: No
Addition: No
Conversion: No

7 Floor 1 - Living Room



Dimensions: 20'10" x 16'4"
Area: 341 sq. ft
Counted as living area: Yes

Heated: Yes
Finished: Yes
Enclosed: Yes
Contiguous: Yes
Permitted: Yes
Wet space: No
Addition: No
Conversion: No

8 Floor 1 - Hall



Dimensions: 7'6" x 3'1"
Area: 23 sq. ft
Counted as living area: Yes

Heated: Yes
Finished: Yes
Enclosed: Yes
Contiguous: Yes
Permitted: Yes
Wet space: No
Addition: No
Conversion: No

9 Floor 1 - Sitting Room



Dimensions: 12'8" x 12'11"
Area: 162 sq. ft
Counted as living area: Yes

Heated: Yes
Finished: Yes
Enclosed: Yes
Contiguous: Yes
Permitted: Yes
Wet space: No
Addition: No
Conversion: No

10 Floor 1 - Family Room



Dimensions: 12'1" x 9'4"
Area: 112 sq. ft
Counted as living area: Yes

Heated: Yes
Finished: Yes
Enclosed: Yes
Contiguous: Yes
Permitted: Yes
Wet space: No
Addition: No
Conversion: No

11 Floor 1 - Bedroom



Dimensions: 11'10" x 15'6"
Area: 183 sq. ft
Counted as living area: Yes

Heated: Yes
Finished: Yes
Enclosed: Yes
Contiguous: Yes
Permitted: Yes
Wet space: No
Addition: No
Conversion: No

12 Floor 1 - Laundry



Dimensions: 17'5" x 7'2"
Area: 124 sq. ft
Counted as living area: Yes

Heated: Yes
Finished: Yes
Enclosed: Yes
Contiguous: Yes
Permitted: Yes
Wet space: No
Addition: No
Conversion: No

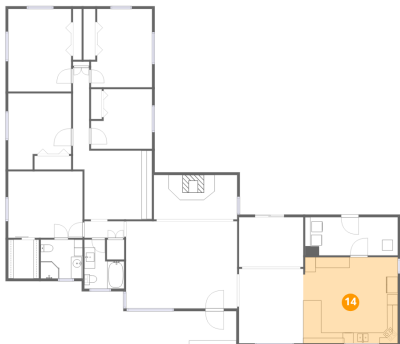
13 Floor 1 - Dining Area



Dimensions: 12'1" x 13'11"
Area: 168 sq. ft
Counted as living area: Yes

Heated: Yes
Finished: Yes
Enclosed: Yes
Contiguous: Yes
Permitted: Yes
Wet space: No
Addition: No
Conversion: No

14 Floor 1 - Kitchen



Dimensions: 17'9" x 16'2"
Area: 285 sq. ft
Counted as living area: Yes

Heated: Yes
Finished: Yes
Enclosed: Yes
Contiguous: Yes
Permitted: Yes
Wet space: No
Addition: No
Conversion: No

15 Floor 1 - Fireplace Room



Dimensions: 15'7" x 8'4"
Area: 130 sq. ft
Counted as living area: Yes

Heated: Yes
Finished: Yes
Enclosed: Yes
Contiguous: Yes
Permitted: Yes
Wet space: No
Addition: No
Conversion: No

16 Floor 1 - Bedroom



Dimensions: 11'10" x 14'3"
Area: 147 sq. ft
Counted as living area: Yes

Heated: Yes
Finished: Yes
Enclosed: Yes
Contiguous: Yes
Permitted: Yes
Wet space: No
Addition: No
Conversion: No

17 Floor 1 - Bath



Dimensions: 7'10" x 7'3"
Area: 57 sq. ft
Counted as living area: Yes

Heated: Yes
Finished: Yes
Enclosed: Yes
Contiguous: Yes
Permitted: Yes
Wet space: Yes
Addition: No
Conversion: No

18 Floor 1 - Bath



Dimensions: 7'6" x 9'2"
Area: 54 sq. ft
Counted as living area: Yes

Heated: Yes
Finished: Yes
Enclosed: Yes
Contiguous: Yes
Permitted: Yes
Wet space: Yes
Addition: No
Conversion: No