

Home report

52 Hollymeade Lane, Daleville, Botetourt County, Virginia,
United States, 24083



Total Area: 4188 sq. ft

Floor 1: 981 sq. ft, Floor 2: 1472 sq. ft, Floor 3: 1735 sq. ft

Excluded: Basement 363 sq. ft, Garage 725 sq. ft, Patio 1910 sq. ft, Porch 93 sq. ft, Fireplace 18 sq. ft, Open to below 149 sq. ft, Low ceiling 214 sq. ft, Walls: 392 sq. ft

Property summary

 **3** Floors

 **6** Bedrooms

 **4** Bathrooms

Home report

**52 Hollymeade Lane, Daleville, Botetourt County, Virginia,
United States, 24083**



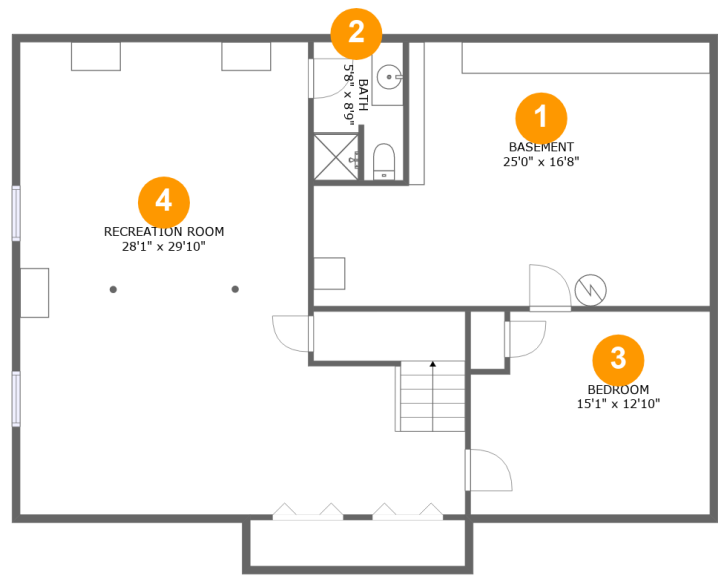
1
Half baths



1
Garages

Home report

52 Hollymeade Lane, Daleville, Botetourt County, Virginia,
United States, 24083



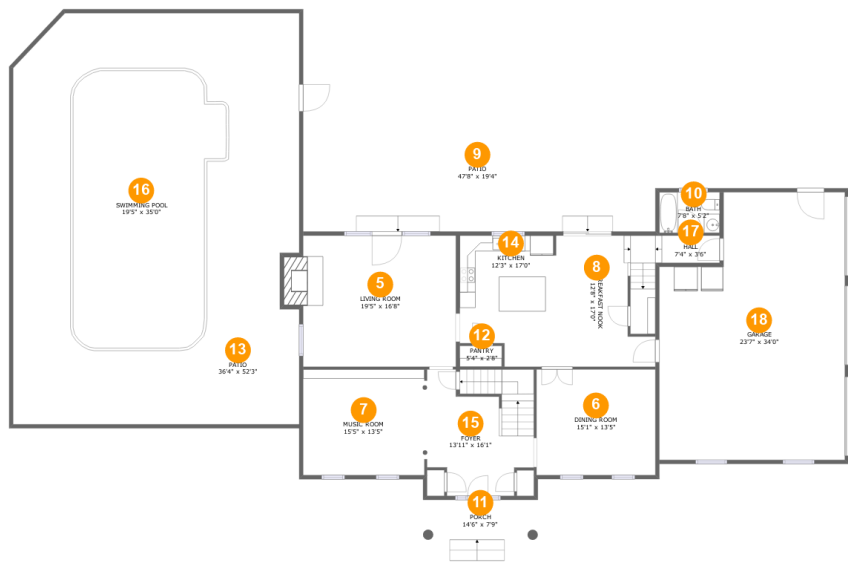
Room dimensions

Floor 1 Total:981sqft Excluded: 363sqft

#		Max Dimensions	sqft	Included
1	Basement	25'0" x 16'8"	363 sq. ft	No
2	Bath	5'8" x 8'9"	48 sq. ft	Yes
3	Bedroom	15'1" x 12'10"	184 sq. ft	Yes
4	Recreation Room	28'1" x 29'10"	667 sq. ft	Yes

Home report

52 Hollymeade Lane, Daleville, Botetourt County, Virginia,
United States, 24083



Room dimensions

Floor 2 Total:1472sqft Excluded: 2746sqft

#		Max Dimensions	sqft	Included
5	Living Room	19'5" x 16'8"	339 sq. ft	Yes
6	Dining Room	15'1" x 13'5"	203 sq. ft	Yes
7	Music Room	15'5" x 13'5"	207 sq. ft	Yes
8	Breakfast Nook	12'8" x 17'0"	208 sq. ft	Yes
9	Patio	47'8" x 19'4"	649 sq. ft	No
10	Bath	7'8" x 5'2"	40 sq. ft	Yes
11	Porch	14'6" x 7'9"	93 sq. ft	No
12	Pantry	5'4" x 2'8"	14 sq. ft	Yes
13	Patio	36'4" x 52'3"	1859 sq. ft	No
14	Kitchen	12'3" x 17'0"	187 sq. ft	Yes
15	Foyer	13'11" x 16'1"	200 sq. ft	Yes

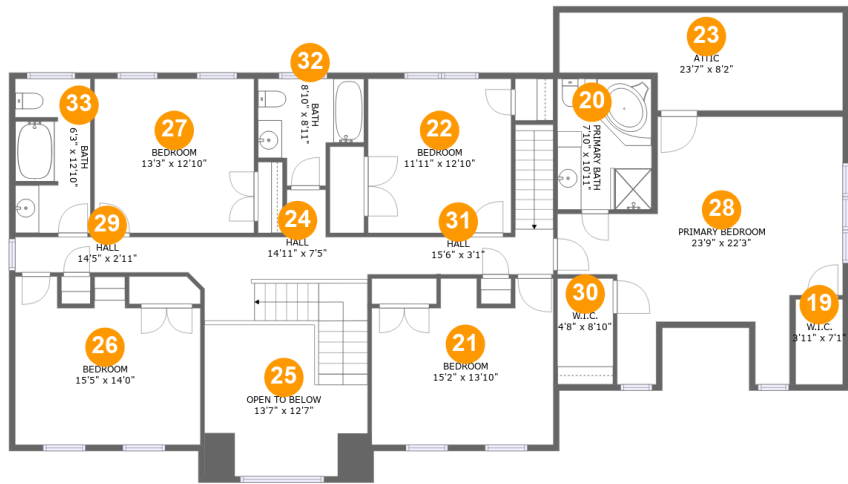
Home report

52 Hollymeade Lane, Daleville, Botetourt County, Virginia,
United States, 24083

#		Max Dimensions	sqft	Included
16	Swimming Pool	19'5" x 35'0"	598 sq. ft	No
17	Hall	7'4" x 3'6"	28 sq. ft	Yes
18	Garage	23'7" x 34'0"	725 sq. ft	No

Home report

52 Hollymeade Lane, Daleville, Botetourt County, Virginia,
United States, 24083



Room dimensions

Floor 3 Total:1735sqft Excluded: 363sqft

#		Max Dimensions	sqft	Included
19	W.I.C.	3'11" x 7'1"	20 sq. ft	Yes
20	Primary Bath	7'10" x 10'11"	60 sq. ft	Yes
21	Bedroom	15'2" x 13'10"	187 sq. ft	Yes
22	Bedroom	11'11" x 12'10"	153 sq. ft	Yes
23	Attic	23'7" x 8'2"	167 sq. ft	No
24	Hall	14'11" x 7'5"	139 sq. ft	Yes
25	Open To Below	13'7" x 12'7"	149 sq. ft	No
26	Bedroom	15'5" x 14'0"	191 sq. ft	Yes
27	Bedroom	13'3" x 12'10"	170 sq. ft	Yes
28	Primary Bedroom	23'9" x 22'3"	340 sq. ft	Yes
29	Hall	14'5" x 2'11"	42 sq. ft	Yes

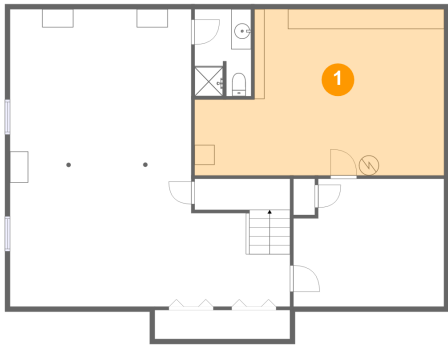
Home report

52 Hollymeade Lane, Daleville, Botetourt County, Virginia,
United States, 24083

#		Max Dimensions	sqft	Included
30	W.I.C.	4'8" x 8'10"	32 sq. ft	Yes
31	Hall	15'6" x 3'1"	78 sq. ft	Yes
32	Bath	8'10" x 8'11"	62 sq. ft	Yes
33	Bath	6'3" x 12'10"	78 sq. ft	Yes

52 Hollymeade Lane, Daleville, Botetourt County, Virginia,
United States, 24083

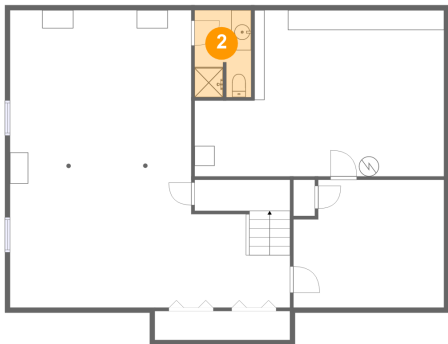
1 Floor 1 - Basement



Max Dimensions: 25'0" x 16'8"
Calculated Area: 363 sq. ft
Included: No

Heated: Yes
Finished: No
Enclosed: Yes
Contiguous: Yes
Permitted: Yes
Wet space: No
Addition: No
Conversion: No

2 Floor 1 - Bath

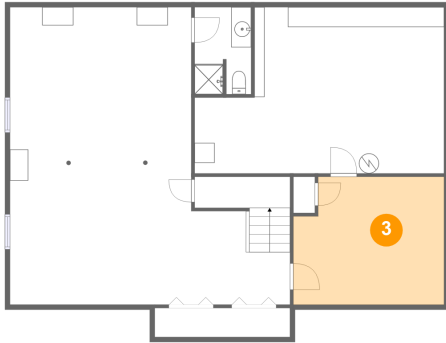


Max Dimensions: 5'8" x 8'9"
Calculated Area: 48 sq. ft
Included: Yes

Heated: Yes
Finished: Yes
Enclosed: Yes
Contiguous: Yes
Permitted: Yes
Wet space: Yes
Addition: No
Conversion: No

52 Hollymeade Lane, Daleville, Botetourt County, Virginia,
United States, 24083

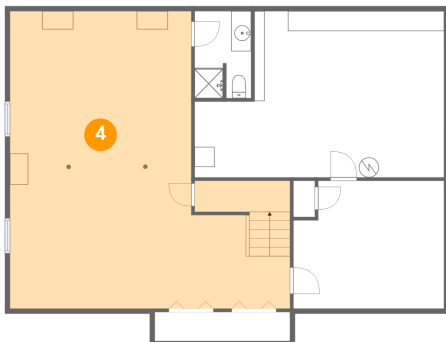
3 Floor 1 - Bedroom



Max Dimensions: 15'1" x 12'10"
Calculated Area: 184 sq. ft
Included: Yes

Heated: Yes
Finished: Yes
Enclosed: Yes
Contiguous: Yes
Permitted: Yes
Wet space: No
Addition: No
Conversion: No

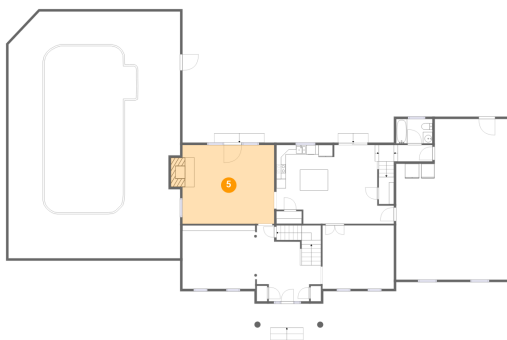
4 Floor 1 - Recreation Room



Max Dimensions: 28'1" x 29'10"
Calculated Area: 667 sq. ft
Included: Yes

Heated: Yes
Finished: Yes
Enclosed: Yes
Contiguous: Yes
Permitted: Yes
Wet space: No
Addition: No
Conversion: No

5 Floor 2 - Living Room

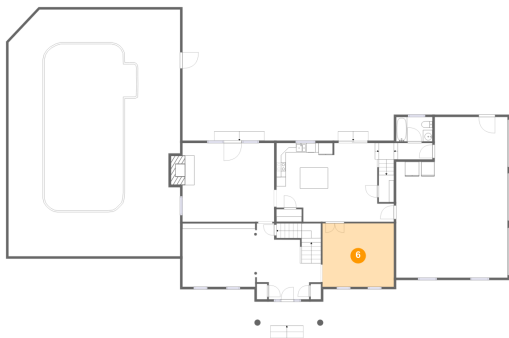


Max Dimensions: 19'5" x 16'8"
Calculated Area: 339 sq. ft
Included: Yes

Heated: Yes
Finished: Yes
Enclosed: Yes
Contiguous: Yes
Permitted: Yes
Wet space: No
Addition: No
Conversion: No

52 Hollymeade Lane, Daleville, Botetourt County, Virginia,
United States, 24083

6 Floor 2 - Dining Room



Max Dimensions: 15'1" x 13'5"
Calculated Area: 203 sq. ft
Included: Yes

Heated: Yes
Finished: Yes
Enclosed: Yes
Contiguous: Yes
Permitted: Yes
Wet space: No
Addition: No
Conversion: No

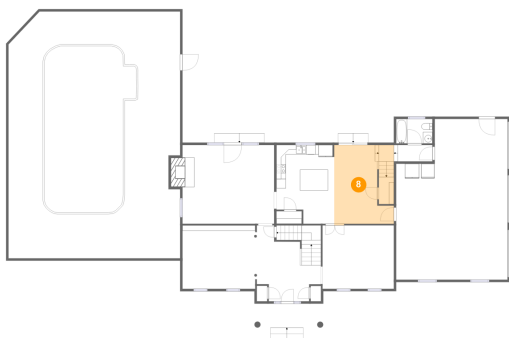
7 Floor 2 - Music Room



Max Dimensions: 15'5" x 13'5"
Calculated Area: 207 sq. ft
Included: Yes

Heated: Yes
Finished: Yes
Enclosed: Yes
Contiguous: Yes
Permitted: Yes
Wet space: No
Addition: No
Conversion: No

8 Floor 2 - Breakfast Nook

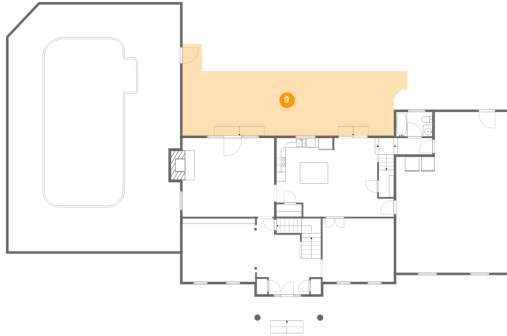


Max Dimensions: 12'8" x 17'0"
Calculated Area: 208 sq. ft
Included: Yes

Heated: Yes
Finished: Yes
Enclosed: Yes
Contiguous: Yes
Permitted: Yes
Wet space: No
Addition: No
Conversion: No

52 Hollymeade Lane, Daleville, Botetourt County, Virginia,
United States, 24083

9 Floor 2 - Patio



Max Dimensions: 47'8" x 19'4"
Calculated Area: 649 sq. ft
Included: No

Heated: No
Finished: Yes
Enclosed: No
Contiguous: Yes
Permitted: Yes
Wet space: No
Addition: No
Conversion: No

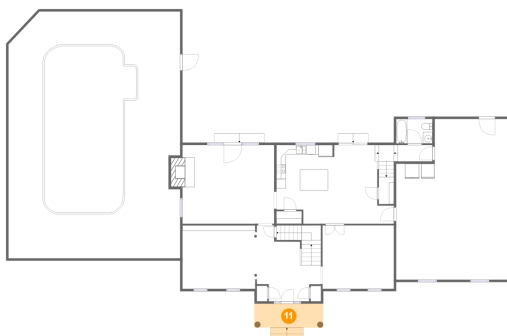
10 Floor 2 - Bath



Max Dimensions: 7'8" x 5'2"
Calculated Area: 40 sq. ft
Included: Yes

Heated: Yes
Finished: Yes
Enclosed: Yes
Contiguous: Yes
Permitted: Yes
Wet space: Yes
Addition: No
Conversion: No

11 Floor 2 - Porch



Max Dimensions: 14'6" x 7'9"
Calculated Area: 93 sq. ft
Included: No

Heated: No
Finished: Yes
Enclosed: No
Contiguous: Yes
Permitted: Yes
Wet space: No
Addition: No
Conversion: No

52 Hollymeade Lane, Daleville, Botetourt County, Virginia,
United States, 24083

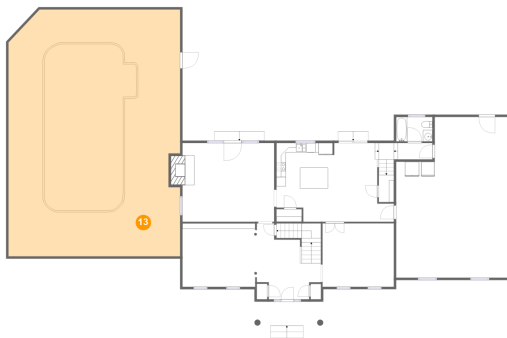
12 Floor 2 - Pantry



Max Dimensions: 5'4" x 2'8"
Calculated Area: 14 sq. ft
Included: Yes

Heated: Yes
Finished: Yes
Enclosed: Yes
Contiguous: Yes
Permitted: Yes
Wet space: No
Addition: No
Conversion: No

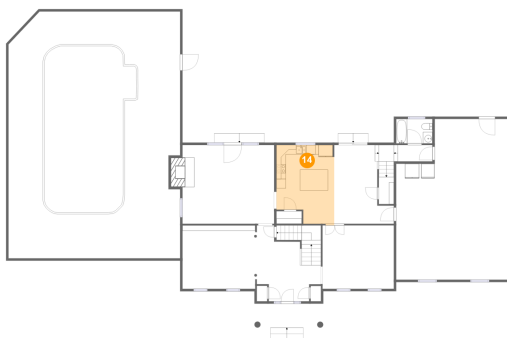
13 Floor 2 - Patio



Max Dimensions: 36'4" x
52'3"
Calculated Area: 1859 sq. ft
Included: No

Heated: No
Finished: Yes
Enclosed: No
Contiguous:
Yes
Permitted: Yes
Wet space: No
Addition: No
Conversion: No

14 Floor 2 - Kitchen

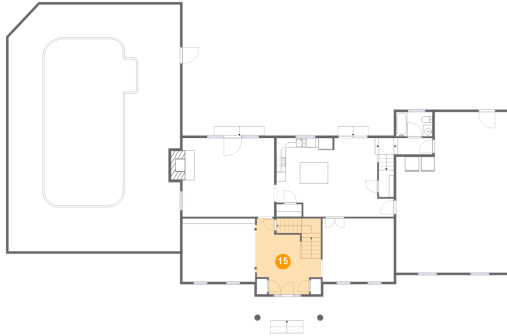


Max Dimensions: 12'3" x
17'0"
Calculated Area: 187 sq. ft
Included: Yes

Heated: Yes
Finished: Yes
Enclosed: Yes
Contiguous:
Yes
Permitted: Yes
Wet space: No
Addition: No
Conversion: No

52 Hollymeade Lane, Daleville, Botetourt County, Virginia,
United States, 24083

15 Floor 2 - Foyer



Max Dimensions: 13'11" x 16'1"
Calculated Area: 200 sq. ft
Included: Yes

Heated: Yes
Finished: Yes
Enclosed: Yes
Contiguous: Yes
Permitted: Yes
Wet space: No
Addition: No
Conversion: No

16 Floor 2 - Swimming Pool



Max Dimensions: 19'5" x 35'0"
Calculated Area: 598 sq. ft
Included: No

Heated: No
Finished: No
Enclosed: No
Contiguous: Yes
Permitted: No
Wet space: No
Addition: No
Conversion: No

17 Floor 2 - Hall

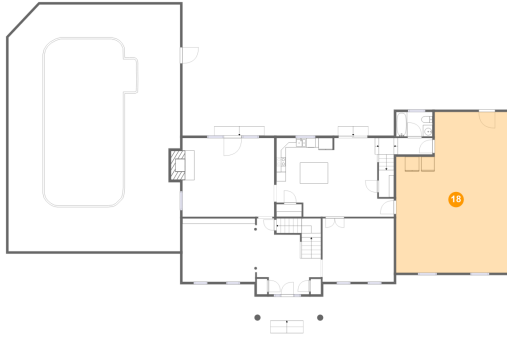


Max Dimensions: 7'4" x 3'6"
Calculated Area: 28 sq. ft
Included: Yes

Heated: Yes
Finished: Yes
Enclosed: Yes
Contiguous: Yes
Permitted: Yes
Wet space: No
Addition: No
Conversion: No

52 Hollymeade Lane, Daleville, Botetourt County, Virginia,
United States, 24083

18 Floor 2 - Garage



Max Dimensions: 23'7" x 34'0"
Calculated Area: 725 sq. ft
Included: No

Heated: No
Finished: No
Enclosed: Yes
Contiguous: Yes
Permitted: Yes
Wet space: No
Addition: No
Conversion: No

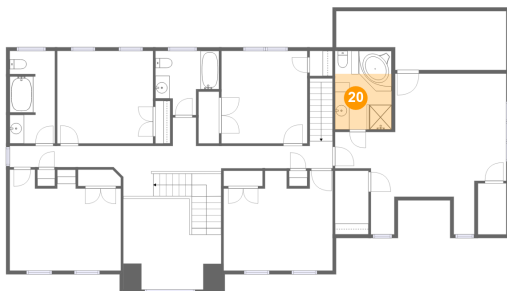
19 Floor 3 - W.I.C.



Max Dimensions: 3'11" x 7'1"
Calculated Area: 20 sq. ft
Included: Yes

Heated: Yes
Finished: Yes
Enclosed: Yes
Contiguous: Yes
Permitted: Yes
Wet space: No
Addition: No
Conversion: No

20 Floor 3 - Primary Bath



Max Dimensions: 7'10" x 10'11"
Calculated Area: 60 sq. ft
Included: Yes

Heated: Yes
Finished: Yes
Enclosed: Yes
Contiguous: Yes
Permitted: Yes
Wet space: Yes
Addition: No
Conversion: No

Home report

52 Hollymeade Lane, Daleville, Botetourt County, Virginia,
United States, 24083

21 Floor 3 - Bedroom



Max Dimensions: 15'2" x 13'10"
Calculated Area: 187 sq. ft
Included: Yes

Heated: Yes
Finished: Yes
Enclosed: Yes
Contiguous: Yes
Permitted: Yes
Wet space: No
Addition: No
Conversion: No

22 Floor 3 - Bedroom



Max Dimensions: 11'11" x 12'10"
Calculated Area: 153 sq. ft
Included: Yes

Heated: Yes
Finished: Yes
Enclosed: Yes
Contiguous: Yes
Permitted: Yes
Wet space: No
Addition: No
Conversion: No

23 Floor 3 - Attic

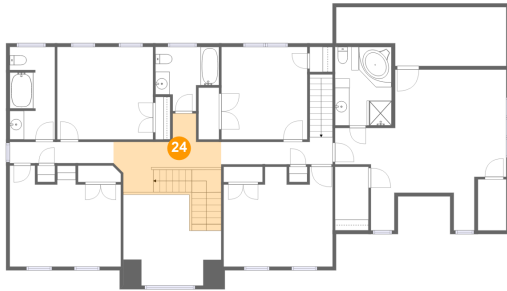


Max Dimensions: 23'7" x 8'2"
Calculated Area: 167 sq. ft
Included: No

Heated: No
Finished: No
Enclosed: Yes
Contiguous: Yes
Permitted: Yes
Wet space: No
Addition: No
Conversion: No

52 Hollymeade Lane, Daleville, Botetourt County, Virginia,
United States, 24083

24 Floor 3 - Hall



Max Dimensions: 14'11" x 7'5"
Calculated Area: 139 sq. ft
Included: Yes

Heated: Yes
Finished: Yes
Enclosed: Yes
Contiguous: Yes
Permitted: Yes
Wet space: No
Addition: No
Conversion: No

25 Floor 3 - Open To Below



Max Dimensions: 13'7" x 12'7"
Calculated Area: 149 sq. ft
Included: No

Heated: No
Finished: No
Enclosed: No
Contiguous: Yes
Permitted: No
Wet space: No
Addition: No
Conversion: No

26 Floor 3 - Bedroom



Max Dimensions: 15'5" x 14'0"
Calculated Area: 191 sq. ft
Included: Yes

Heated: Yes
Finished: Yes
Enclosed: Yes
Contiguous: Yes
Permitted: Yes
Wet space: No
Addition: No
Conversion: No

52 Hollymeade Lane, Daleville, Botetourt County, Virginia,
United States, 24083

27 Floor 3 - Bedroom



Max Dimensions: 13'3" x 12'10"
Calculated Area: 170 sq. ft
Included: Yes

Heated: Yes
Finished: Yes
Enclosed: Yes
Contiguous: Yes
Permitted: Yes
Wet space: No
Addition: No
Conversion: No

28 Floor 3 - Primary Bedroom



Max Dimensions: 23'9" x 22'3"
Calculated Area: 340 sq. ft
Included: Yes

Heated: Yes
Finished: Yes
Enclosed: Yes
Contiguous: Yes
Permitted: Yes
Wet space: No
Addition: No
Conversion: No

29 Floor 3 - Hall



Max Dimensions: 14'5" x 2'11"
Calculated Area: 42 sq. ft
Included: Yes

Heated: Yes
Finished: Yes
Enclosed: Yes
Contiguous: Yes
Permitted: Yes
Wet space: No
Addition: No
Conversion: No

52 Hollymeade Lane, Daleville, Botetourt County, Virginia,
United States, 24083

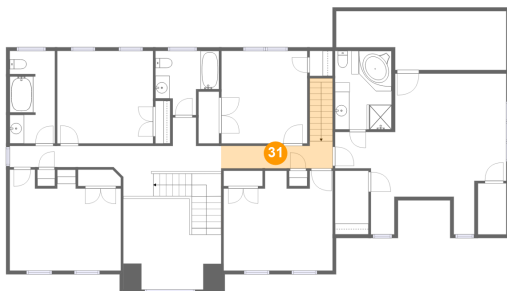
30 Floor 3 - W.I.C.



Max Dimensions: 4'8" x 8'10"
Calculated Area: 32 sq. ft
Included: Yes

Heated: Yes
Finished: Yes
Enclosed: Yes
Contiguous: Yes
Permitted: Yes
Wet space: No
Addition: No
Conversion: No

31 Floor 3 - Hall



Max Dimensions: 15'6" x 3'1"
Calculated Area: 78 sq. ft
Included: Yes

Heated: Yes
Finished: Yes
Enclosed: Yes
Contiguous: Yes
Permitted: Yes
Wet space: No
Addition: No
Conversion: No

32 Floor 3 - Bath



Max Dimensions: 8'10" x 8'11"
Calculated Area: 62 sq. ft
Included: Yes

Heated: Yes
Finished: Yes
Enclosed: Yes
Contiguous: Yes
Permitted: Yes
Wet space: Yes
Addition: No
Conversion: No

52 Hollymeade Lane, Daleville, Botetourt County, Virginia,
United States, 24083

33 Floor 3 - Bath



Max Dimensions: 6'3" x
12'10"
Calculated Area: 78 sq. ft
Included: Yes

Heated: Yes
Finished: Yes
Enclosed: Yes
Contiguous:
Yes
Permitted: Yes
Wet space: Yes
Addition: No
Conversion: No