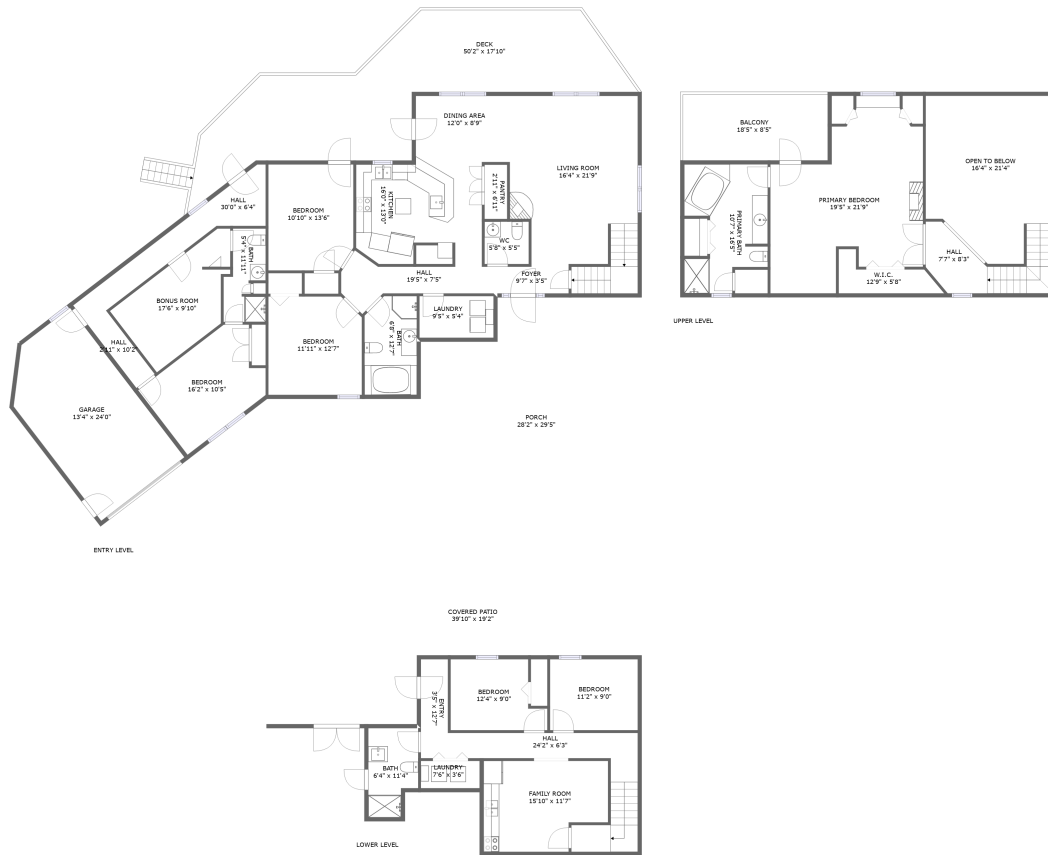


35 Harbor View Circle, Penhook, Franklin County, Virginia, United States, 24137



Property summary


 **1** Garages

 **6** Bedrooms

 **4** Bathrooms

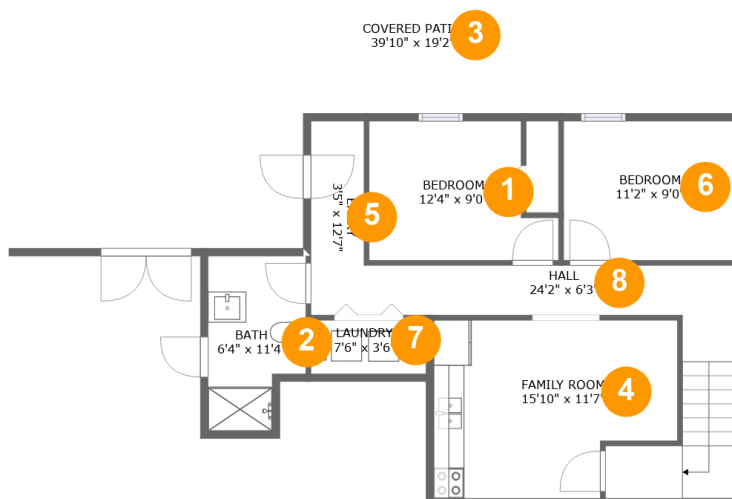
 **1** Half baths

 **3** Floors

 **3,482** Gross living area sqft

 **6,135** Total sqft

35 Harbor View Circle, Penhook, Franklin County, Virginia, United States, 24137



Room dimensions

Floor 1

Total sqft: 1236 Living area: 750

#		Dimensions	sqft	Counted as living area
1	Bedroom	12'4" x 9'0"	96 sq. ft	Yes
2	Bath	6'4" x 11'4"	64 sq. ft	Yes
3	Outdoor	39'10" x 19'2"	486 sq. ft	No
4	Living Room	15'10" x 11'7"	165 sq. ft	Yes
5	Entry	3'5" x 12'7"	44 sq. ft	Yes
6	Bedroom	11'2" x 9'0"	101 sq. ft	Yes
7	Utility	7'6" x 3'6"	26 sq. ft	Yes
8	Hall	24'2" x 6'3"	136 sq. ft	Yes

35 Harbor View Circle, Penhook, Franklin County, Virginia, United States, 24137



Room dimensions

Floor 2

Total sqft: 3650 Living area: 1956

#		Dimensions	sqft	Counted as living area
9	Outdoor	28'2" x 29'5"	772 sq. ft	No
10	Garage	13'4" x 24'0"	304 sq. ft	No
11	Dining Room	12'0" x 8'9"	104 sq. ft	Yes
12	Bath	6'8" x 12'7"	81 sq. ft	Yes
13	Entry	9'7" x 3'5"	33 sq. ft	Yes
14	Utility	9'5" x 5'4"	50 sq. ft	Yes
15	Pantry	2'11" x 6'11"	20 sq. ft	Yes
16	Bath	5'8" x 5'5"	30 sq. ft	Yes
17	Hall	19'5" x 7'5"	78 sq. ft	Yes
18	Living Room	16'4" x 21'9"	363 sq. ft	Yes
19	Hall	30'0" x 6'4"	106 sq. ft	Yes

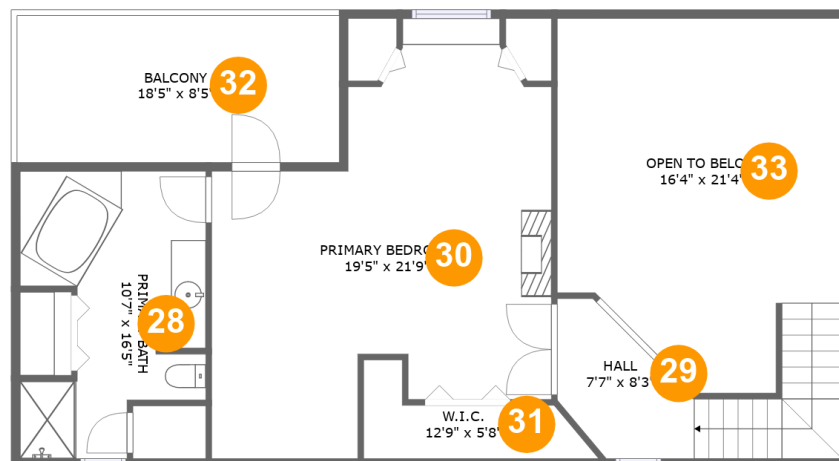
Scan captured on Mon, 25 Nov 2024 15:20:59 GMT

Information is calculated by Cubicasa technology deemed highly reliable but not guaranteed.

**35 Harbor View Circle, Penhook, Franklin County,
Virginia, United States, 24137**

#		Dimensions	sqft	Counted as living area
20	Bedroom	10'10" x 13'6"	144 sq. ft	Yes
21	Bedroom	11'11" x 12'7"	146 sq. ft	Yes
22	Bath	5'4" x 11'11"	52 sq. ft	Yes
23	Kitchen	16'0" x 13'0"	199 sq. ft	Yes
24	Room	17'6" x 9'10"	144 sq. ft	Yes
25	Bedroom	16'2" x 10'5"	149 sq. ft	Yes
26	Hall	2'11" x 10'2"	30 sq. ft	Yes
27	Outdoor	50'2" x 17'10"	593 sq. ft	No

35 Harbor View Circle, Penhook, Franklin County, Virginia, United States, 24137



Room dimensions

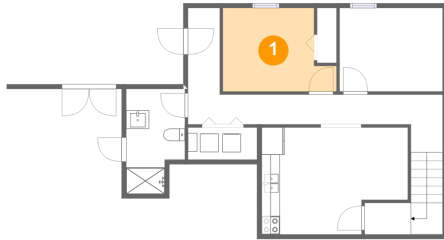
Floor 3

Total sqft: 1249 Living area: 776

#		Dimensions	sqft	Counted as living area
28	Bath	10'7" x 16'5"	141 sq. ft	Yes
29	Hall	7'7" x 8'3"	104 sq. ft	Yes
30	Bedroom	19'5" x 21'9"	356 sq. ft	Yes
31	Cl	12'9" x 5'8"	43 sq. ft	Yes
32	Outdoor	18'5" x 8'5"	155 sq. ft	No
33	Open To Below	16'4" x 21'4"	301 sq. ft	No

35 Harbor View Circle, Penhook, Franklin County, Virginia, United States, 24137

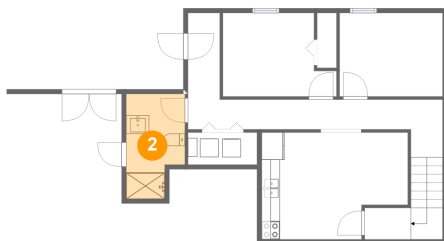
1 Floor 1 - Bedroom



Dimensions: 12'4" x 9'0"
Area: 96 sq. ft
Counted as living area: Yes

Heated: Yes
Finished: Yes
Enclosed: Yes
Contiguous: Yes
Permitted: Yes
Wet space: No
Addition: No
Conversion: No

2 Floor 1 - Bath

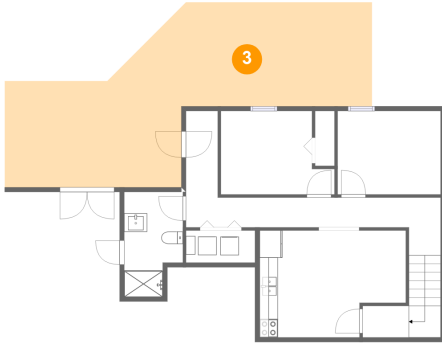


Dimensions: 6'4" x 11'4"
Area: 64 sq. ft
Counted as living area: Yes

Heated: Yes
Finished: Yes
Enclosed: Yes
Contiguous: Yes
Permitted: Yes
Wet space: Yes
Addition: No
Conversion: No

35 Harbor View Circle, Penhook, Franklin County, Virginia, United States, 24137

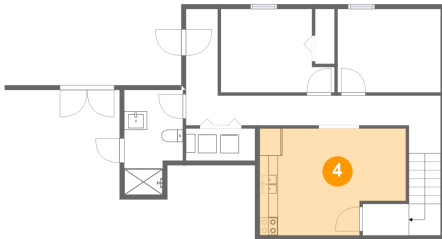
3 Floor 1 - Outdoor



Dimensions: 39'10" x 19'2"
Area: 486 sq. ft
Counted as living area: No

Heated: No
Finished: No
Enclosed: No
Contiguous: Yes
Permitted: Yes
Wet space: No
Addition: No
Conversion: No

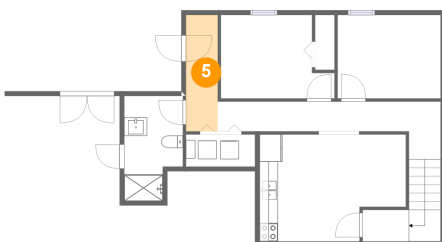
4 Floor 1 - Living Room



Dimensions: 15'10" x 11'7"
Area: 165 sq. ft
Counted as living area: Yes

Heated: Yes
Finished: Yes
Enclosed: Yes
Contiguous: Yes
Permitted: Yes
Wet space: No
Addition: No
Conversion: No

5 Floor 1 - Entry

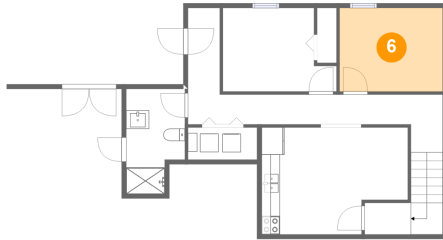


Dimensions: 3'5" x 12'7"
Area: 44 sq. ft
Counted as living area: Yes

Heated: Yes
Finished: Yes
Enclosed: Yes
Contiguous: Yes
Permitted: Yes
Wet space: No
Addition: No
Conversion: No

35 Harbor View Circle, Penhook, Franklin County, Virginia, United States, 24137

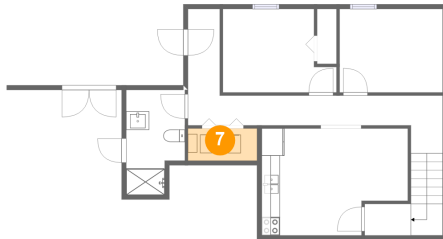
6 Floor 1 - Bedroom



Dimensions: 11'2" x 9'0"
Area: 101 sq. ft
Counted as living area: Yes

Heated: Yes
Finished: Yes
Enclosed: Yes
Contiguous: Yes
Permitted: Yes
Wet space: No
Addition: No
Conversion: No

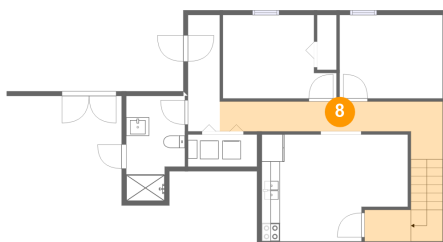
7 Floor 1 - Utility



Dimensions: 7'6" x 3'6"
Area: 26 sq. ft
Counted as living area: Yes

Heated: Yes
Finished: Yes
Enclosed: Yes
Contiguous: Yes
Permitted: Yes
Wet space: No
Addition: No
Conversion: No

8 Floor 1 - Hall

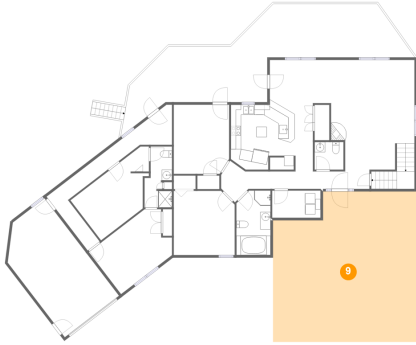


Dimensions: 24'2" x 6'3"
Area: 136 sq. ft
Counted as living area: Yes

Heated: Yes
Finished: Yes
Enclosed: Yes
Contiguous: Yes
Permitted: Yes
Wet space: No
Addition: No
Conversion: No

35 Harbor View Circle, Penhook, Franklin County, Virginia, United States, 24137

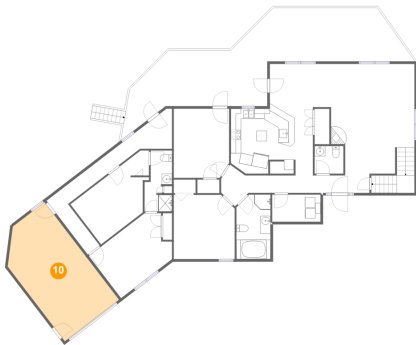
9 Floor 2 - Outdoor



Dimensions: 28'2" x 29'5"
Area: 772 sq. ft
Counted as living area: No

Heated: No
Finished: Yes
Enclosed: No
Contiguous: Yes
Permitted: Yes
Wet space: No
Addition: No
Conversion: No

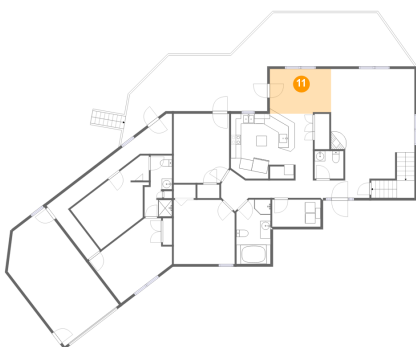
10 Floor 2 - Garage



Dimensions: 13'4" x 24'0"
Area: 304 sq. ft
Counted as living area: No

Heated: No
Finished: No
Enclosed: Yes
Contiguous: Yes
Permitted: Yes
Wet space: No
Addition: No
Conversion: No

11 Floor 2 - Dining Room

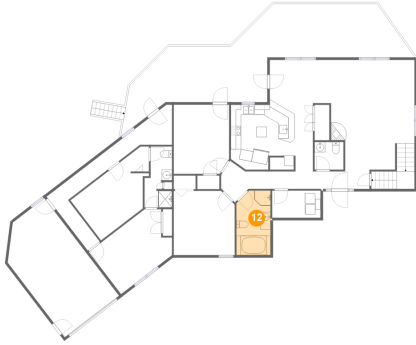


Dimensions: 12'0" x 8'9"
Area: 104 sq. ft
Counted as living area: Yes

Heated: Yes
Finished: Yes
Enclosed: Yes
Contiguous: Yes
Permitted: Yes
Wet space: No
Addition: No
Conversion: No

35 Harbor View Circle, Penhook, Franklin County, Virginia, United States, 24137

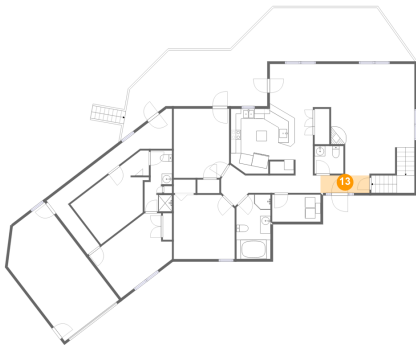
12 Floor 2 - Bath



Dimensions: 6'8" x 12'7"
Area: 81 sq. ft
Counted as living area: Yes

Heated: Yes
Finished: Yes
Enclosed: Yes
Contiguous: Yes
Permitted: Yes
Wet space: Yes
Addition: No
Conversion: No

13 Floor 2 - Entry



Dimensions: 9'7" x 3'5"
Area: 33 sq. ft
Counted as living area: Yes

Heated: Yes
Finished: Yes
Enclosed: Yes
Contiguous: Yes
Permitted: Yes
Wet space: No
Addition: No
Conversion: No

14 Floor 2 - Utility

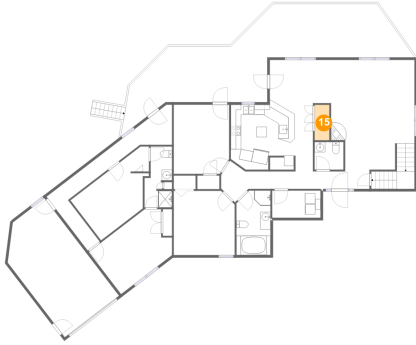


Dimensions: 9'5" x 5'4"
Area: 50 sq. ft
Counted as living area: Yes

Heated: Yes
Finished: Yes
Enclosed: Yes
Contiguous: Yes
Permitted: Yes
Wet space: No
Addition: No
Conversion: No

35 Harbor View Circle, Penhook, Franklin County, Virginia, United States, 24137

15 Floor 2 - Pantry



Dimensions: 2'11" x 6'11"
Area: 20 sq. ft
Counted as living area: Yes

Heated: Yes
Finished: Yes
Enclosed: Yes
Contiguous: Yes
Permitted: Yes
Wet space: No
Addition: No
Conversion: No

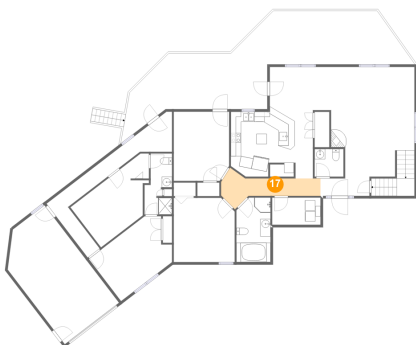
16 Floor 2 - Bath



Dimensions: 5'8" x 5'5"
Area: 30 sq. ft
Counted as living area: Yes

Heated: Yes
Finished: Yes
Enclosed: Yes
Contiguous: Yes
Permitted: Yes
Wet space: Yes
Addition: No
Conversion: No

17 Floor 2 - Hall

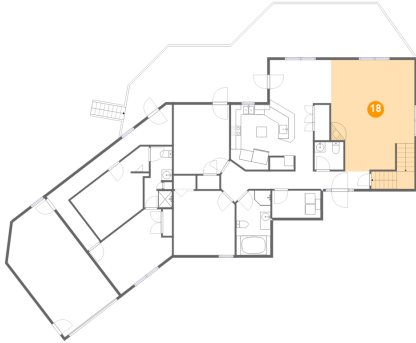


Dimensions: 19'5" x 7'5"
Area: 78 sq. ft
Counted as living area: Yes

Heated: Yes
Finished: Yes
Enclosed: Yes
Contiguous: Yes
Permitted: Yes
Wet space: No
Addition: No
Conversion: No

35 Harbor View Circle, Penhook, Franklin County, Virginia, United States, 24137

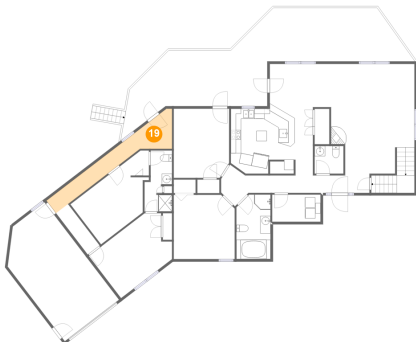
18 Floor 2 - Living Room



Dimensions: 16'4" x 21'9"
Area: 363 sq. ft
Counted as living area: Yes

Heated: Yes
Finished: Yes
Enclosed: Yes
Contiguous: Yes
Permitted: Yes
Wet space: No
Addition: No
Conversion: No

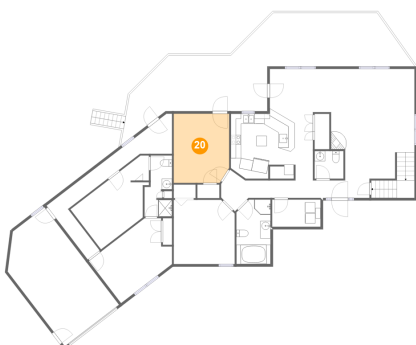
19 Floor 2 - Hall



Dimensions: 30'0" x 6'4"
Area: 106 sq. ft
Counted as living area: Yes

Heated: Yes
Finished: Yes
Enclosed: Yes
Contiguous: Yes
Permitted: Yes
Wet space: No
Addition: No
Conversion: No

20 Floor 2 - Bedroom



Dimensions: 10'10" x 13'6"
Area: 144 sq. ft
Counted as living area: Yes

Heated: Yes
Finished: Yes
Enclosed: Yes
Contiguous: Yes
Permitted: Yes
Wet space: No
Addition: No
Conversion: No

35 Harbor View Circle, Penhook, Franklin County, Virginia, United States, 24137

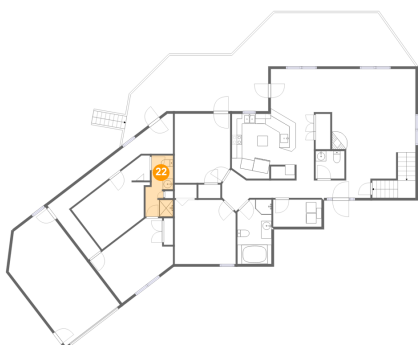
21 Floor 2 - Bedroom



Dimensions: 11'11" x 12'7"
Area: 146 sq. ft
Counted as living area: Yes

Heated: Yes
Finished: Yes
Enclosed: Yes
Contiguous: Yes
Permitted: Yes
Wet space: No
Addition: No
Conversion: No

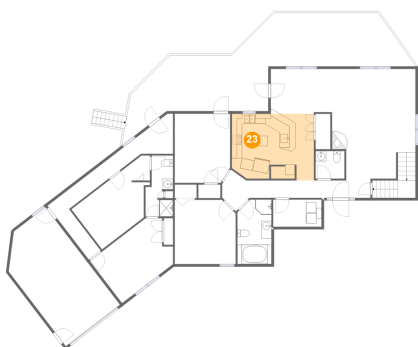
22 Floor 2 - Bath



Dimensions: 5'4" x 11'11"
Area: 52 sq. ft
Counted as living area: Yes

Heated: Yes
Finished: Yes
Enclosed: Yes
Contiguous: Yes
Permitted: Yes
Wet space: Yes
Addition: No
Conversion: No

23 Floor 2 - Kitchen

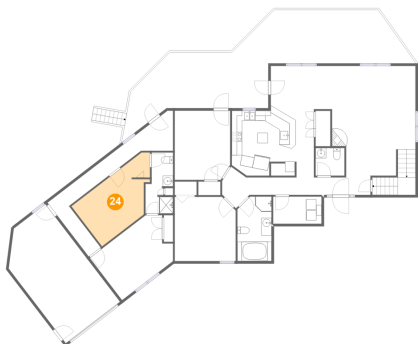


Dimensions: 16'0" x 13'0"
Area: 199 sq. ft
Counted as living area: Yes

Heated: Yes
Finished: Yes
Enclosed: Yes
Contiguous: Yes
Permitted: Yes
Wet space: No
Addition: No
Conversion: No

35 Harbor View Circle, Penhook, Franklin County, Virginia, United States, 24137

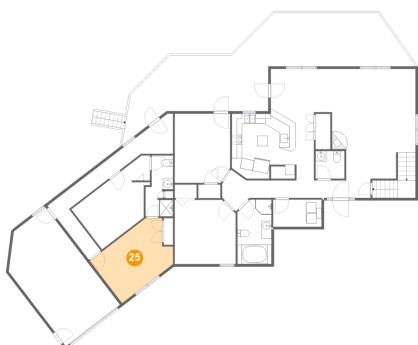
24 Floor 2 - Room



Dimensions: 17'6" x 9'10"
Area: 144 sq. ft
Counted as living area: Yes

Heated: Yes
Finished: Yes
Enclosed: Yes
Contiguous: Yes
Permitted: Yes
Wet space: No
Addition: No
Conversion: No

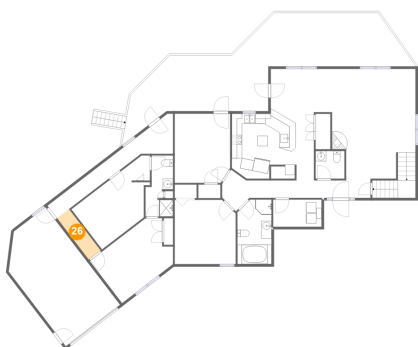
25 Floor 2 - Bedroom



Dimensions: 16'2" x 10'5"
Area: 149 sq. ft
Counted as living area: Yes

Heated: Yes
Finished: Yes
Enclosed: Yes
Contiguous: Yes
Permitted: Yes
Wet space: No
Addition: No
Conversion: No

26 Floor 2 - Hall

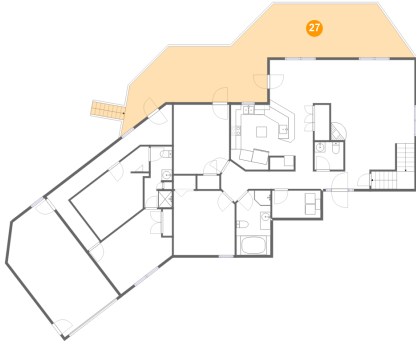


Dimensions: 2'11" x 10'2"
Area: 30 sq. ft
Counted as living area: Yes

Heated: Yes
Finished: Yes
Enclosed: Yes
Contiguous: Yes
Permitted: Yes
Wet space: No
Addition: No
Conversion: No

35 Harbor View Circle, Penhook, Franklin County, Virginia, United States, 24137

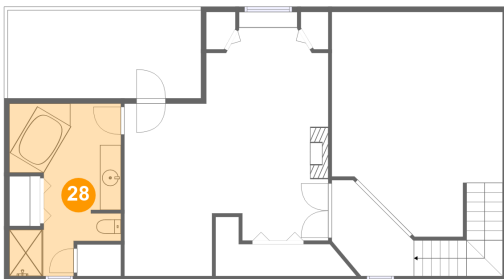
27 Floor 2 - Outdoor



Dimensions: 50'2" x 17'10"
Area: 593 sq. ft
Counted as living area: No

Heated: No
Finished: Yes
Enclosed: No
Contiguous: Yes
Permitted: Yes
Wet space: No
Addition: No
Conversion: No

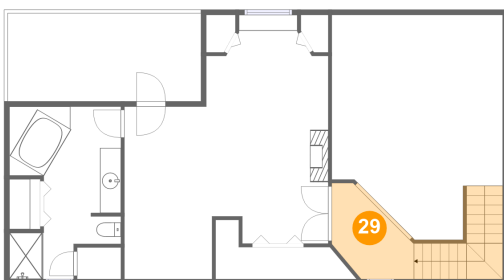
28 Floor 3 - Bath



Dimensions: 10'7" x 16'5"
Area: 141 sq. ft
Counted as living area: Yes

Heated: Yes
Finished: Yes
Enclosed: Yes
Contiguous: Yes
Permitted: Yes
Wet space: Yes
Addition: No
Conversion: No

29 Floor 3 - Hall

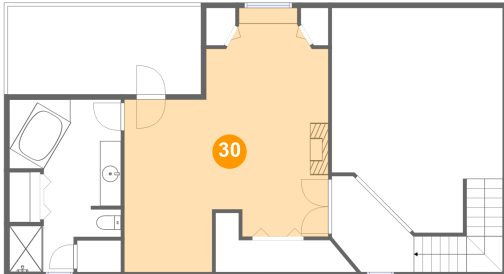


Dimensions: 7'7" x 8'3"
Area: 104 sq. ft
Counted as living area: Yes

Heated: Yes
Finished: Yes
Enclosed: Yes
Contiguous: Yes
Permitted: Yes
Wet space: No
Addition: No
Conversion: No

35 Harbor View Circle, Penhook, Franklin County, Virginia, United States, 24137

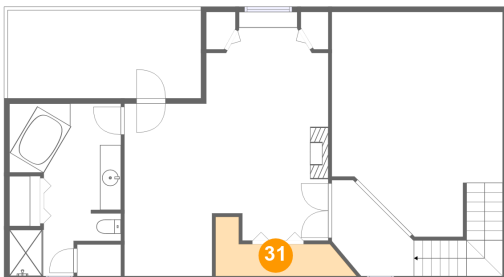
30 Floor 3 - Bedroom



Dimensions: 19'5" x 21'9"
Area: 356 sq. ft
Counted as living area: Yes

Heated: Yes
Finished: Yes
Enclosed: Yes
Contiguous: Yes
Permitted: Yes
Wet space: No
Addition: No
Conversion: No

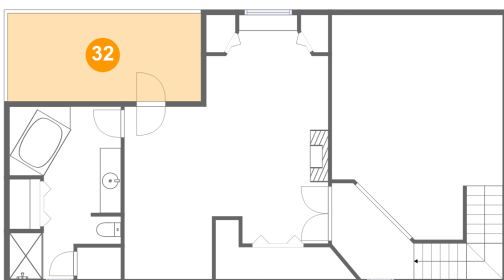
31 Floor 3 - Cl



Dimensions: 12'9" x 5'8"
Area: 43 sq. ft
Counted as living area: Yes

Heated: Yes
Finished: Yes
Enclosed: Yes
Contiguous: Yes
Permitted: Yes
Wet space: No
Addition: No
Conversion: No

32 Floor 3 - Outdoor

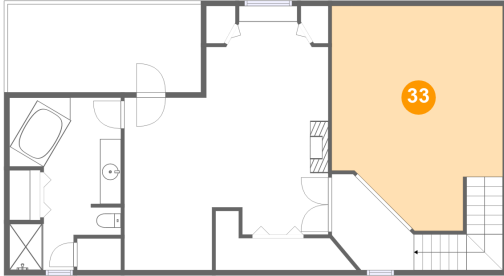


Dimensions: 18'5" x 8'5"
Area: 155 sq. ft
Counted as living area: No

Heated: No
Finished: No
Enclosed: No
Contiguous: Yes
Permitted: Yes
Wet space: No
Addition: No
Conversion: No

**35 Harbor View Circle, Penhook, Franklin County,
Virginia, United States, 24137**

33 Floor 3 - Open To Below



Dimensions: 16'4" x 21'4"
Area: 301 sq. ft
Counted as living area: No

Heated: No
Finished: No
Enclosed: No
Contiguous: Yes
Permitted: No
Wet space: No
Addition: No
Conversion: No