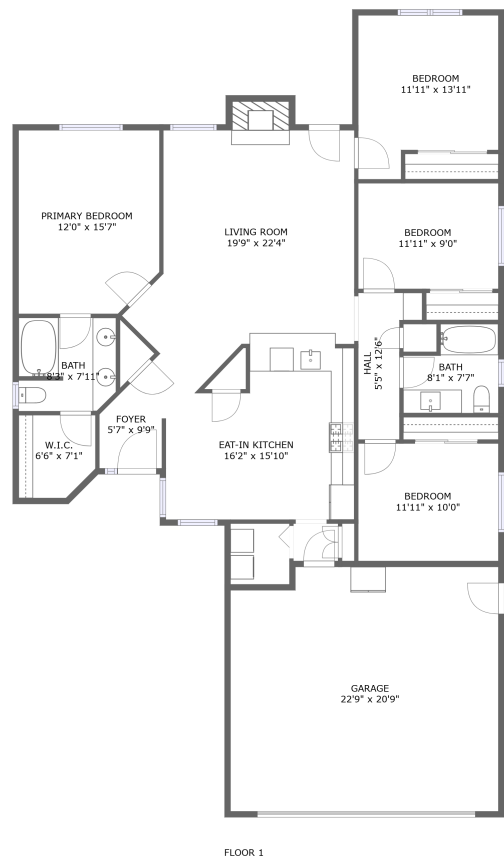


Home report

3312 Poplar Street, Rosamond, Kern County, California, United States, 93560





Total Area: 1520 sq. ft


Floor 1: 1520 sq. ft

Excluded: Garage 462 sq. ft, Fireplace 15 sq. ft, Walls: 119 sq. ft

Property summary

 **1** Floors

 **4** Bedrooms

 **2** Bathrooms

 **1** Garages

Home report

3312 Poplar Street, Rosamond, Kern County, California, United States, 93560



Room dimensions

Floor 1

Total:1520sqft    Excluded: 477sqft

| #  |                 | Max Dimensions  | sqft       | Included |
|----|-----------------|-----------------|------------|----------|
| 1  | Living Room     | 19'9" x 22'4"   | 333 sq. ft | Yes      |
| 2  | W.I.C.          | 6'6" x 7'1"     | 43 sq. ft  | Yes      |
| 3  | Eat-in Kitchen  | 16'2" x 15'10"  | 216 sq. ft | Yes      |
| 4  | Bath            | 8'3" x 7'11"    | 63 sq. ft  | Yes      |
| 5  | Bedroom         | 11'11" x 10'0"  | 119 sq. ft | Yes      |
| 6  | Primary Bedroom | 12'0" x 15'7"   | 181 sq. ft | Yes      |
| 7  | Bath            | 8'1" x 7'7"     | 53 sq. ft  | Yes      |
| 8  | Garage          | 22'9" x 20'9"   | 462 sq. ft | No       |
| 9  | Foyer           | 5'7" x 9'9"     | 39 sq. ft  | Yes      |
| 10 | Hall            | 5'5" x 12'6"    | 48 sq. ft  | Yes      |
| 11 | Bedroom         | 11'11" x 13'11" | 145 sq. ft | Yes      |

Home report

3312 Poplar Street, Rosamond, Kern County, California, United States, 93560

| #  |         | Max Dimensions | sqft       | Included |
|----|---------|----------------|------------|----------|
| 12 | Bedroom | 11'11" x 9'0"  | 107 sq. ft | Yes      |

1 Floor 1 - Living Room



Max Dimensions: 19'9" x 22'4"  
Calculated Area: 333 sq. ft  
Included: Yes

Heated: Yes  
Finished: Yes  
Enclosed: Yes  
Contiguous: Yes  
Permitted: Yes  
Wet space: No  
Addition: No  
Conversion: No

2 Floor 1 - W.I.C.



Max Dimensions: 6'6" x 7'1"  
Calculated Area: 43 sq. ft  
Included: Yes

Heated: Yes  
Finished: Yes  
Enclosed: Yes  
Contiguous: Yes  
Permitted: Yes  
Wet space: No  
Addition: No  
Conversion: No

3312 Poplar Street, Rosamond, Kern County, California, United States, 93560

3 Floor 1 - Eat-in Kitchen



Max Dimensions: 16'2" x 15'10"  
Calculated Area: 216 sq. ft  
Included: Yes

Heated: Yes  
Finished: Yes  
Enclosed: Yes  
Contiguous: Yes  
Permitted: Yes  
Wet space: No  
Addition: No  
Conversion: No

4 Floor 1 - Bath



Max Dimensions: 8'3" x 7'11"  
Calculated Area: 63 sq. ft  
Included: Yes

Heated: Yes  
Finished: Yes  
Enclosed: Yes  
Contiguous: Yes  
Permitted: Yes  
Wet space: Yes  
Addition: No  
Conversion: No

5 Floor 1 - Bedroom

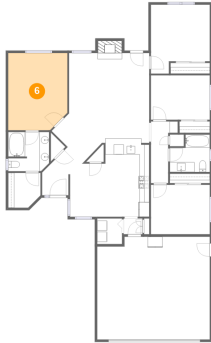


Max Dimensions: 11'11" x 10'0"  
Calculated Area: 119 sq. ft  
Included: Yes

Heated: Yes  
Finished: Yes  
Enclosed: Yes  
Contiguous: Yes  
Permitted: Yes  
Wet space: No  
Addition: No  
Conversion: No

3312 Poplar Street, Rosamond, Kern County, California, United States, 93560

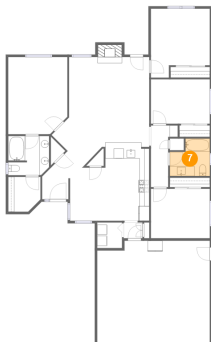
## 6 Floor 1 - Primary Bedroom



Max Dimensions: 12'0" x 15'7"  
Calculated Area: 181 sq. ft  
Included: Yes

Heated: Yes  
Finished: Yes  
Enclosed: Yes  
Contiguous: Yes  
Permitted: Yes  
Wet space: No  
Addition: No  
Conversion: No

## 7 Floor 1 - Bath



Max Dimensions: 8'1" x 7'7"  
Calculated Area: 53 sq. ft  
Included: Yes

Heated: Yes  
Finished: Yes  
Enclosed: Yes  
Contiguous: Yes  
Permitted: Yes  
Wet space: Yes  
Addition: No  
Conversion: No

## 8 Floor 1 - Garage



Max Dimensions: 22'9" x 20'9"  
Calculated Area: 462 sq. ft  
Included: No

Heated: No  
Finished: No  
Enclosed: Yes  
Contiguous: Yes  
Permitted: Yes  
Wet space: No  
Addition: No  
Conversion: No

3312 Poplar Street, Rosamond, Kern County, California, United States, 93560

## 9 Floor 1 - Foyer



Max Dimensions: 5'7" x 9'9"  
Calculated Area: 39 sq. ft  
Included: Yes

Heated: Yes  
Finished: Yes  
Enclosed: Yes  
Contiguous: Yes  
Permitted: Yes  
Wet space: No  
Addition: No  
Conversion: No

## 10 Floor 1 - Hall



Max Dimensions: 5'5" x 12'6"  
Calculated Area: 48 sq. ft  
Included: Yes

Heated: Yes  
Finished: Yes  
Enclosed: Yes  
Contiguous: Yes  
Permitted: Yes  
Wet space: No  
Addition: No  
Conversion: No

## 11 Floor 1 - Bedroom



Max Dimensions: 11'11" x 13'11"  
Calculated Area: 145 sq. ft  
Included: Yes

Heated: Yes  
Finished: Yes  
Enclosed: Yes  
Contiguous: Yes  
Permitted: Yes  
Wet space: No  
Addition: No  
Conversion: No

3312 Poplar Street, Rosamond, Kern County, California, United States, 93560

**12** Floor 1 - Bedroom



Max Dimensions: 11'11" x 9'0"  
Calculated Area: 107 sq. ft  
Included: Yes

Heated: Yes  
Finished: Yes  
Enclosed: Yes  
Contiguous: Yes  
Permitted: Yes  
Wet space: No  
Addition: No  
Conversion: No