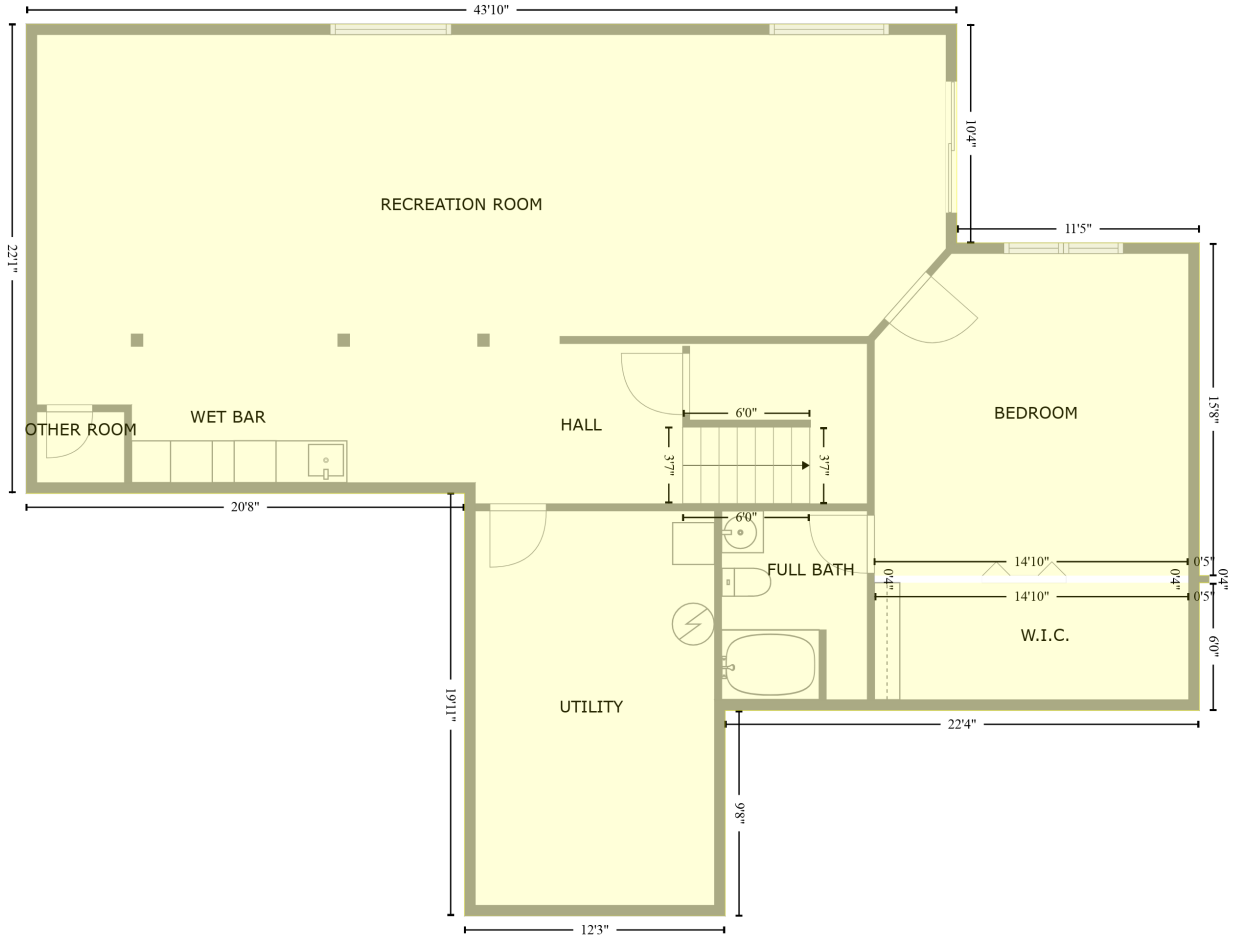


# 14 Fieldcrest Dr, Monticello, Illinois, United States

Gross Living Area: 2773 sq. ft

FLOOR 1  
[AREA: 1569]



## Space

Area (sq. ft)

Calculation Coordinate Polygon Area Algorithm using inches

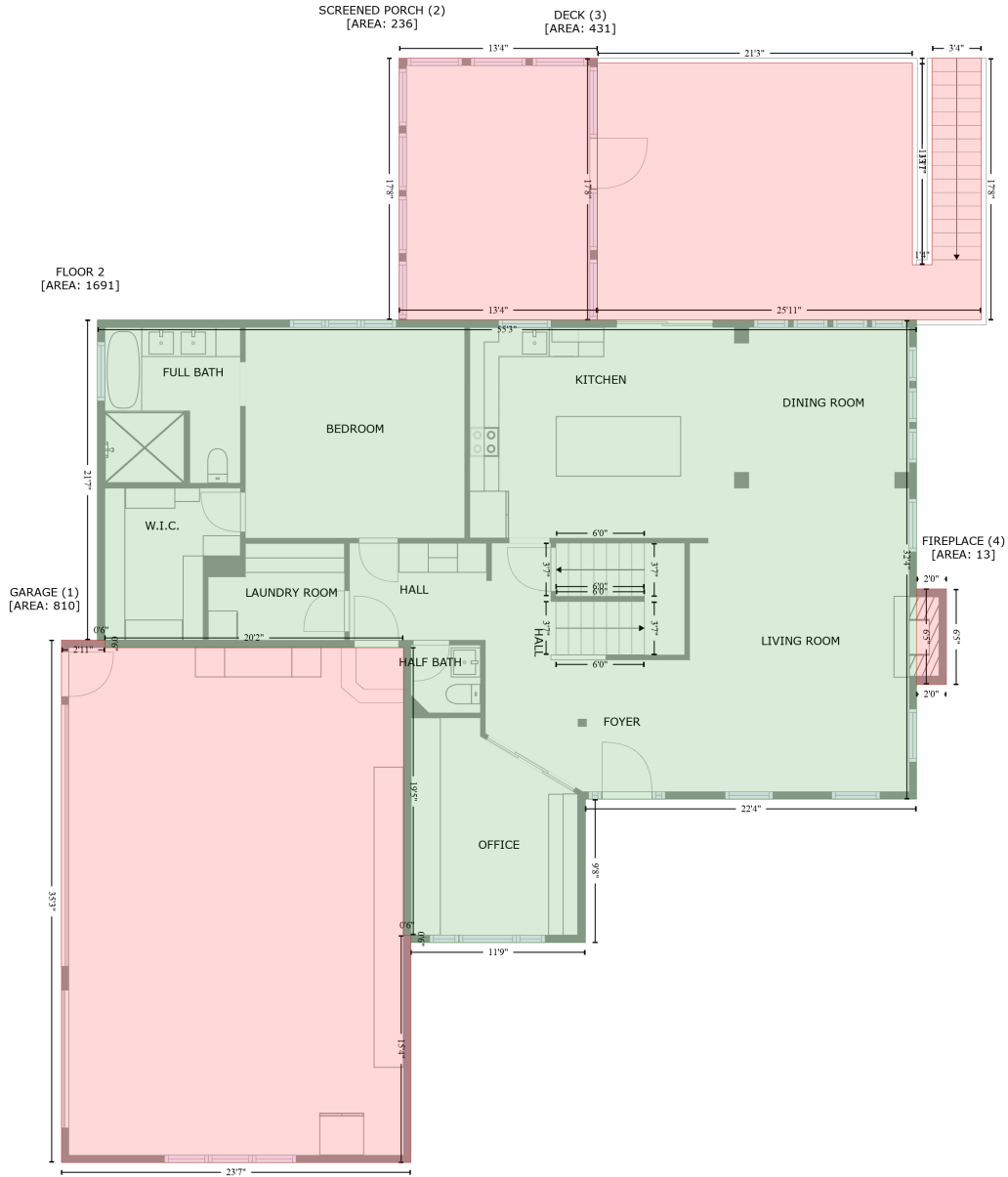
FLOOR 1  
(Living area)

1569

$$\begin{aligned}
 & -((628.1 + 628.1) * (199.8 - 323.4) + (628.1 + 765.1) * (323.4 - 323.4) + (765.1 + 765.1) * (323.4 - \\
 & 511.3) + (765.1 + 770.6) * (511.3 - 511.3) + (770.6 + 770.6) * (511.3 - 515.3) + (770.6 + 765.1) * \\
 & (515.3 - 515.3) + (765.1 + 765.1) * (515.3 - 587.4) + (765.1 + 497.2) * (587.4 - 587.4) + (497.2 + \\
 & 497.2) * (587.4 - 703.5) + (497.2 + 350) * (703.5 - 703.5) + (350 + 350) * (703.5 - 464.9) + (350 + \\
 & 102.3) * (464.9 - 464.9) + (102.3 + 102.3) * (464.9 - 199.8) + (102.3 + 628.1) * (199.8 - 199.8)) * \\
 & 0.5 * 0.00694 + -((759.1 + 581.5) * (511.3 - 511.3) + (581.5 + 581.5) * (511.3 - 515.3) + (581.5 + \\
 & 759.1) * (515.3 - 515.3) + (759.1 + 759.1) * (515.3 - 511.3)) * 0.5 * 0.00694
 \end{aligned}$$

# 14 Fieldcrest Dr, Monticello, Illinois, United States

Gross Living Area: 2773 sq. ft



Space	Area (sq. ft)	Calculation <small>Coordinate Polygon Area Algorithm using inches</small>
FLOOR 2 (Living area)	1691	$-((754.3 + 754.3) * (189.9 - 577.5) + (754.3 + 486.4) * (577.5 - 577.5) + (486.4 + 486.4) * (577.5 - 693.6) + (486.4 + 345.2) * (693.6 - 693.6) + (345.2 + 345.2) * (693.6 - 687.6) + (345.2 + 339.2) * (687.6 - 687.6) + (339.2 + 339.2) * (687.6 - 454.9) + (339.2 + 97.5) * (454.9 - 454.9) + (97.5 + 97.5) * (454.9 - 448.9) + (97.5 + 91.5) * (448.9 - 448.9) + (91.5 + 91.5) * (448.9 - 189.9) + (91.5 + 754.3) * (189.9 - 189.9)) * 0.5 * 0.00694$
GARAGE	810	$-((97.5 + 97.5) * (448.9 - 454.9) + (97.5 + 339.2) * (454.9 - 454.9) + (339.2 + 339.2) * (454.9 -$

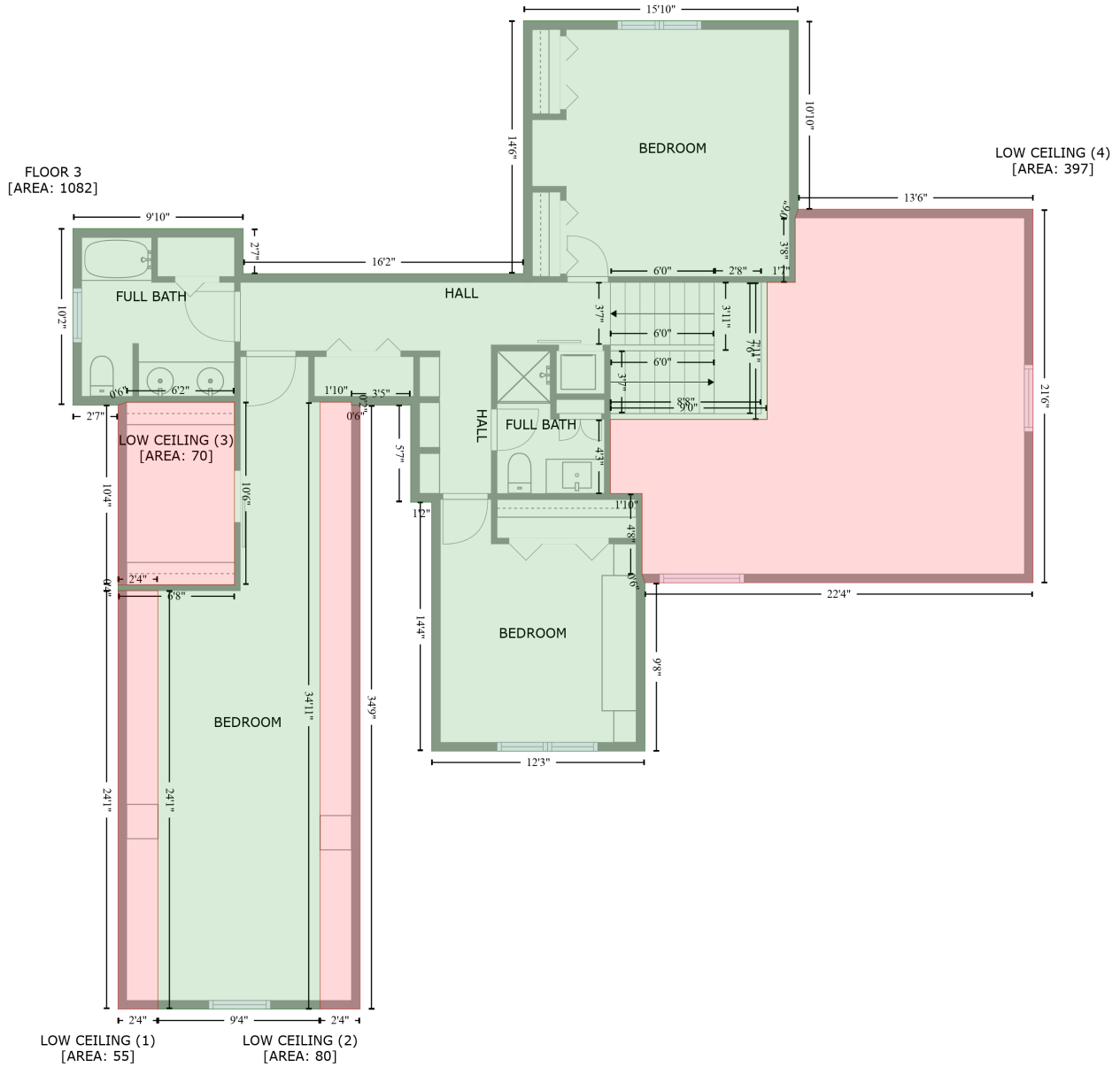
# 14 Fieldcrest Dr, Monticello, Illinois, United States

Gross Living Area: 2773 sq. ft

Space	Area (sq. ft)	Calculation <small>Coordinate Polygon Area Algorithm using inches</small>
(Non-living area)		$687.6 + (339.2 + 345.2) * (687.6 - 687.6) + (345.2 + 345.2) * (687.6 - 871.6) + (345.2 + 62.4) * (871.6 - 871.6) + (62.4 + 62.4) * (871.6 - 448.9) + (62.4 + 97.5) * (448.9 - 448.9) * 0.5 * 0.00694$
SCREENED PORCH (Non-living area)	236	$-((496 + 496) * (-21.9 - 189.9) + (496 + 335.6) * (189.9 - 189.9) + (335.6 + 335.6) * (189.9 - -21.9) + (335.6 + 496) * (-21.9 - -21.9)) * 0.5 * 0.00694$
DECK (Non-living area)	431	$-((806.6 + 806.6) * (-21.9 - 189.9) + (806.6 + 496) * (189.9 - 189.9) + (496 + 496) * (189.9 - -17.9) + (496 + 750.9) * (-17.9 - -17.9) + (750.9 + 750.9) * (-17.9 - 145.2) + (750.9 + 766.8) * (145.2 - 145.2) + (766.8 + 766.8) * (145.2 - -21.9) + (766.8 + 806.6) * (-21.9 - -21.9)) * 0.5 * 0.00694$
FIREPLACE (Non-living area)	13	$-((778.5 + 778.5) * (407.4 - 484.9) + (778.5 + 754.3) * (484.9 - 484.9) + (754.3 + 754.3) * (484.9 - 407.4) + (754.3 + 778.5) * (407.4 - 407.4)) * 0.5 * 0.00694$

# 14 Fieldcrest Dr, Monticello, Illinois, United States

Gross Living Area: 2773 sq. ft



## Space

Area (sq. ft)

Calculation Coordinate Polygon Area Algorithm using inches

FLOOR 3  
(Living area)

1082

$-\left((408.1 + 597.6) * (187 - 187) + (597.6 + 597.6) * (187 - 316.9) + (597.6 + 595.6) * (316.9 - 322.9) + (595.6 + 595.6) * (322.9 - 367.4) + (595.6 + 576.2) * (367.4 - 367.4) + (576.2 + 576.2) * (367.4 - 461.9) + (576.2 + 468) * (461.9 - 461.9) + (468 + 468) * (461.9 - 513) + (468 + 489.9) * (513 - 513) + (489.9 + 489.9) * (513 - 568.5) + (489.9 + 491.9) * (568.5 - 574.5) + (491.9 + 491.9) * (574.5 - 690.6) + (491.9 + 344.7) * (690.6 - 690.6) + (344.7 + 344.7) * (690.6 - 519) + (344.7 + 330.2) * (519 - 519) + (330.2 + 330.2) * (519 - 452) + (330.2 + 289.3) * (452 - 452) + (289.3 + 289.3) * (452 - 450) + (289.3 + 267.7) * (450 - 450) + (267.7 + 267.7) * (450 - 868.6) + (267.7 +$

# 14 Fieldcrest Dr, Monticello, Illinois, United States

Gross Living Area: 2773 sq. ft

Space	Area (sq. ft)	Calculation <small>Coordinate Polygon Area Algorithm using inches</small>
		$155.7 * (868.6 - 868.6) + (155.7 + 155.7) * (868.6 - 580) + (155.7 + 128.1) * (580 - 580) + (128.1 + 128.1) * (580 - 576) + (128.1 + 208.6) * (576 - 576) + (208.6 + 208.6) * (576 - 450) + (208.6 + 134.1) * (450 - 450) + (134.1 + 128.1) * (450 - 452) + (128.1 + 97) * (452 - 452) + (97 + 97) * (452 - 330.3) + (97 + 214.6) * (330.3 - 330.3) + (214.6 + 214.6) * (330.3 - 361.4) + (214.6 + 408.1) * (361.4 - 361.4) + (408.1 + 408.1) * (361.4 - 187) * 0.5 * 0.00694$
LOW CEILING (Non-living area)	55	$-((155.7 + 155.7) * (580 - 868.6) + (155.7 + 128.1) * (868.6 - 868.6) + (128.1 + 128.1) * (868.6 - 580) + (128.1 + 155.7) * (580 - 580)) * 0.5 * 0.00694$
LOW CEILING (Non-living area)	80	$-((289.3 + 289.3) * (450 - 452) + (289.3 + 295.3) * (452 - 452) + (295.3 + 295.3) * (452 - 868.6) + (295.3 + 267.7) * (868.6 - 868.6) + (267.7 + 267.7) * (868.6 - 450) + (267.7 + 289.3) * (450 - 450)) * 0.5 * 0.00694$
LOW CEILING (Non-living area)	70	$-((208.6 + 208.6) * (450 - 576) + (208.6 + 128.1) * (576 - 576) + (128.1 + 128.1) * (576 - 452) + (128.1 + 134.1) * (452 - 450) + (134.1 + 208.6) * (450 - 450)) * 0.5 * 0.00694$
LOW CEILING (Non-living area)	397	$-((759.8 + 759.8) * (316.9 - 574.5) + (759.8 + 491.9) * (574.5 - 574.5) + (491.9 + 489.9) * (574.5 - 568.5) + (489.9 + 489.9) * (568.5 - 513) + (489.9 + 468) * (513 - 513) + (468 + 468) * (513 - 461.9) + (468 + 576.2) * (461.9 - 461.9) + (576.2 + 576.2) * (461.9 - 367.4) + (576.2 + 595.6) * (367.4 - 367.4) + (595.6 + 595.6) * (367.4 - 322.9) + (595.6 + 597.6) * (322.9 - 316.9) + (597.6 + 759.8) * (316.9 - 316.9)) * 0.5 * 0.00694$