



Home report


10417 W. Alyssa Ln.,Peoria,AZ,US




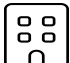
Property summary


 **1** Garages


 **3** Bedrooms

 **2** Bathrooms

 **1** Half baths

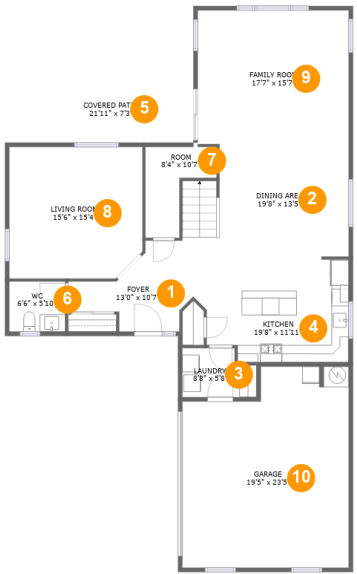
 **2** Floors

 **2,791** Gross living area sqft

 **3,398** Total sqft

Home report

10417 W. Alyssa Ln.,Peoria,AZ,US



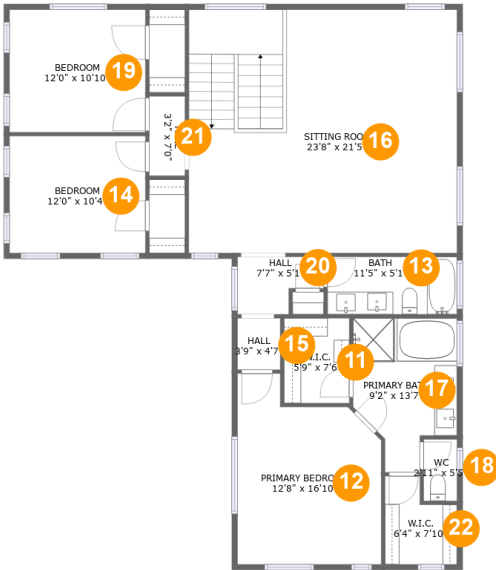
Room dimensions

Floor 1Total sqft: 1926    Living area: 1319

#		Dimensions	sqft	Counted as living area
1	Foyer	13'0" x 10'7"	86 sq. ft	Yes
2	Dining Area	19'8" x 13'5"	241 sq. ft	Yes
3	Laundry	8'8" x 5'8"	44 sq. ft	Yes
4	Kitchen	19'8" x 11'11"	207 sq. ft	Yes
5	Covered Patio	21'11" x 7'3"	159 sq. ft	No
6	WC	6'6" x 5'10"	38 sq. ft	Yes
7	Room	8'4" x 10'7"	58 sq. ft	Yes
8	Living Room	15'6" x 15'4"	233 sq. ft	Yes
9	Family Room	17'7" x 15'7"	274 sq. ft	Yes
10	Garage	19'5" x 23'5"	415 sq. ft	No

Home report

10417 W. Alyssa Ln.,Peoria,AZ,US



Room dimensions

Floor 2 Total sqft: 1472 Living area: 1472

#		Dimensions	sqft	Counted as living area
11	W.I.C.	5'9" x 7'6"	43 sq. ft	Yes
12	Primary Bedroom	12'8" x 16'10"	183 sq. ft	Yes
13	Bath	11'5" x 5'1"	58 sq. ft	Yes
14	Bedroom	12'0" x 10'4"	124 sq. ft	Yes
15	Hall	3'9" x 4'7"	17 sq. ft	Yes
16	Sitting Room	23'8" x 21'5"	509 sq. ft	Yes
17	Primary Bath	9'2" x 13'7"	102 sq. ft	Yes
18	WC	2'11" x 5'5"	16 sq. ft	Yes
19	Bedroom	12'0" x 10'10"	130 sq. ft	Yes
20	Hall	7'7" x 5'1"	32 sq. ft	Yes
21	Hall	3'2" x 7'0"	22 sq. ft	Yes

Home report

10417 W. Alyssa Ln.,Peoria,AZ,US

#		Dimensions	sqft	Counted as living area
22	W.I.C.	6'4" x 7'10"	41 sq. ft	Yes

1 Floor 1 - Foyer



Dimensions: 13'0" x 10'7"  
Area: 86 sq. ft  
Counted as living area: Yes

Heated: Yes  
Finished: Yes  
Enclosed: Yes  
Contiguous: Yes  
Permitted: Yes  
Wet space: No  
Addition: No  
Conversion: No

2 Floor 1 - Dining Area



Dimensions: 19'8" x 13'5"  
Area: 241 sq. ft  
Counted as living area: Yes

Heated: Yes  
Finished: Yes  
Enclosed: Yes  
Contiguous: Yes  
Permitted: Yes  
Wet space: No  
Addition: No  
Conversion: No

### 3 Floor 1 - Laundry



Dimensions: 8'8" x 5'8"  
Area: 44 sq. ft  
Counted as living area: Yes

Heated: Yes  
Finished: Yes  
Enclosed: Yes  
Contiguous: Yes  
Permitted: Yes  
Wet space: No  
Addition: No  
Conversion: No

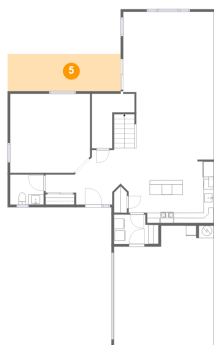
### 4 Floor 1 - Kitchen



Dimensions: 19'8" x 11'11"  
Area: 207 sq. ft  
Counted as living area: Yes

Heated: Yes  
Finished: Yes  
Enclosed: Yes  
Contiguous: Yes  
Permitted: Yes  
Wet space: No  
Addition: No  
Conversion: No

### 5 Floor 1 - Covered Patio



Dimensions: 21'11" x 7'3"  
Area: 159 sq. ft  
Counted as living area: No

Heated: No  
Finished: Yes  
Enclosed: No  
Contiguous: Yes  
Permitted: Yes  
Wet space: No  
Addition: No  
Conversion: No

6 Floor 1 - WC



Dimensions: 6'6" x 5'10"  
Area: 38 sq. ft  
Counted as living area: Yes

Heated: Yes  
Finished: Yes  
Enclosed: Yes  
Contiguous: Yes  
Permitted: Yes  
Wet space: Yes  
Addition: No  
Conversion: No

7 Floor 1 - Room



Dimensions: 8'4" x 10'7"  
Area: 58 sq. ft  
Counted as living area: Yes

Heated: Yes  
Finished: Yes  
Enclosed: Yes  
Contiguous: Yes  
Permitted: Yes  
Wet space: No  
Addition: No  
Conversion: No

8 Floor 1 - Living Room



Dimensions: 15'6" x 15'4"  
Area: 233 sq. ft  
Counted as living area: Yes

Heated: Yes  
Finished: Yes  
Enclosed: Yes  
Contiguous: Yes  
Permitted: Yes  
Wet space: No  
Addition: No  
Conversion: No

9 Floor 1 - Family Room



Dimensions: 17'7" x 15'7"  
Area: 274 sq. ft  
Counted as living area: Yes

Heated: Yes  
Finished: Yes  
Enclosed: Yes  
Contiguous: Yes  
Permitted: Yes  
Wet space: No  
Addition: No  
Conversion: No

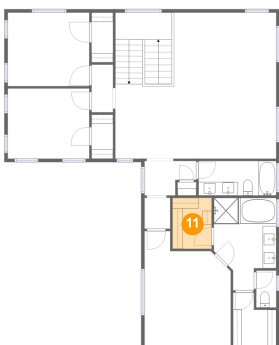
10 Floor 1 - Garage



Dimensions: 19'5" x 23'5"  
Area: 415 sq. ft  
Counted as living area: No

Heated: No  
Finished: No  
Enclosed: Yes  
Contiguous: Yes  
Permitted: Yes  
Wet space: No  
Addition: No  
Conversion: No

11 Floor 2 - W.I.C.



Dimensions: 5'9" x 7'6"  
Area: 43 sq. ft  
Counted as living area: Yes

Heated: Yes  
Finished: Yes  
Enclosed: Yes  
Contiguous: Yes  
Permitted: Yes  
Wet space: No  
Addition: No  
Conversion: No



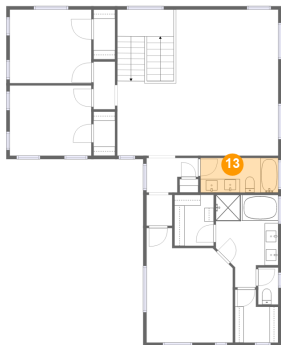
12 Floor 2 - Primary Bedroom



Dimensions: 12'8" x 16'10"  
Area: 183 sq. ft  
Counted as living area: Yes

Heated: Yes  
Finished: Yes  
Enclosed: Yes  
Contiguous: Yes  
Permitted: Yes  
Wet space: No  
Addition: No  
Conversion: No

13 Floor 2 - Bath



Dimensions: 11'5" x 5'1"  
Area: 58 sq. ft  
Counted as living area: Yes

Heated: Yes  
Finished: Yes  
Enclosed: Yes  
Contiguous: Yes  
Permitted: Yes  
Wet space: Yes  
Addition: No  
Conversion: No

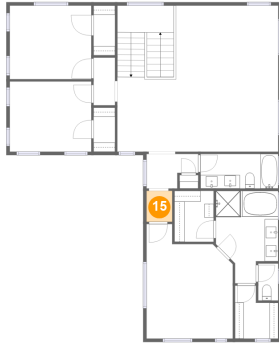
14 Floor 2 - Bedroom



Dimensions: 12'0" x 10'4"  
Area: 124 sq. ft  
Counted as living area: Yes

Heated: Yes  
Finished: Yes  
Enclosed: Yes  
Contiguous: Yes  
Permitted: Yes  
Wet space: No  
Addition: No  
Conversion: No

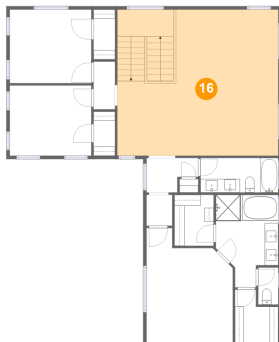
## 15 Floor 2 - Hall



Dimensions: 3'9" x 4'7"  
Area: 17 sq. ft  
Counted as living area: Yes

Heated: Yes  
Finished: Yes  
Enclosed: Yes  
Contiguous: Yes  
Permitted: Yes  
Wet space: No  
Addition: No  
Conversion: No

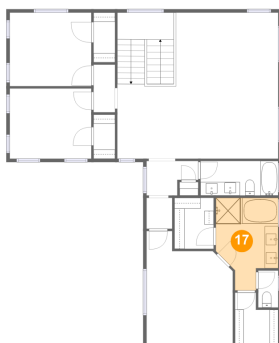
## 16 Floor 2 - Sitting Room



Dimensions: 23'8" x 21'5"  
Area: 509 sq. ft  
Counted as living area: Yes

Heated: Yes  
Finished: Yes  
Enclosed: Yes  
Contiguous: Yes  
Permitted: Yes  
Wet space: No  
Addition: No  
Conversion: No

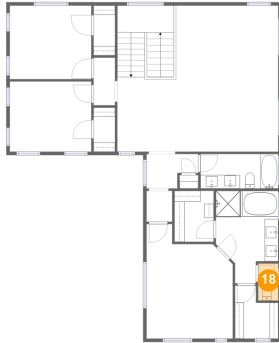
## 17 Floor 2 - Primary Bath



Dimensions: 9'2" x 13'7"  
Area: 102 sq. ft  
Counted as living area: Yes

Heated: Yes  
Finished: Yes  
Enclosed: Yes  
Contiguous: Yes  
Permitted: Yes  
Wet space: Yes  
Addition: No  
Conversion: No

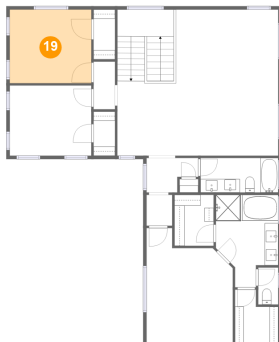
## 18 Floor 2 - WC



Dimensions: 2'11" x 5'5"  
Area: 16 sq. ft  
Counted as living area: Yes

Heated: Yes  
Finished: Yes  
Enclosed: Yes  
Contiguous: Yes  
Permitted: Yes  
Wet space: Yes  
Addition: No  
Conversion: No

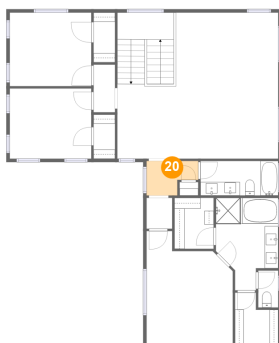
## 19 Floor 2 - Bedroom



Dimensions: 12'0" x 10'10"  
Area: 130 sq. ft  
Counted as living area: Yes

Heated: Yes  
Finished: Yes  
Enclosed: Yes  
Contiguous: Yes  
Permitted: Yes  
Wet space: No  
Addition: No  
Conversion: No

## 20 Floor 2 - Hall



Dimensions: 7'7" x 5'1"  
Area: 32 sq. ft  
Counted as living area: Yes

Heated: Yes  
Finished: Yes  
Enclosed: Yes  
Contiguous: Yes  
Permitted: Yes  
Wet space: No  
Addition: No  
Conversion: No

21 Floor 2 - Hall



Dimensions: 3'2" x 7'0"  
Area: 22 sq. ft  
Counted as living area: Yes

Heated: Yes  
Finished: Yes  
Enclosed: Yes  
Contiguous: Yes  
Permitted: Yes  
Wet space: No  
Addition: No  
Conversion: No

22 Floor 2 - W.I.C.



Dimensions: 6'4" x 7'10"  
Area: 41 sq. ft  
Counted as living area: Yes

Heated: Yes  
Finished: Yes  
Enclosed: Yes  
Contiguous: Yes  
Permitted: Yes  
Wet space: No  
Addition: No  
Conversion: No