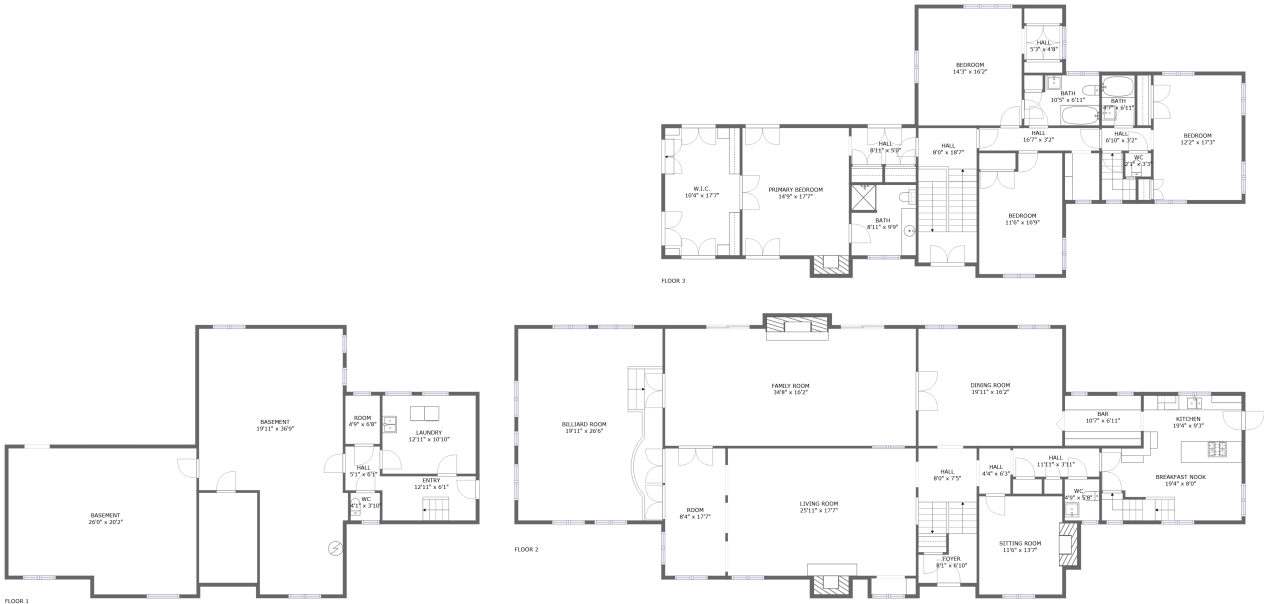




Home report


1010 Hawthorne Lane, Geneva, Kane County, Illinois, United States, 60134




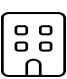
Property summary


**0** Garages


**4** Bedrooms

**3** Bathrooms

**1** Half baths

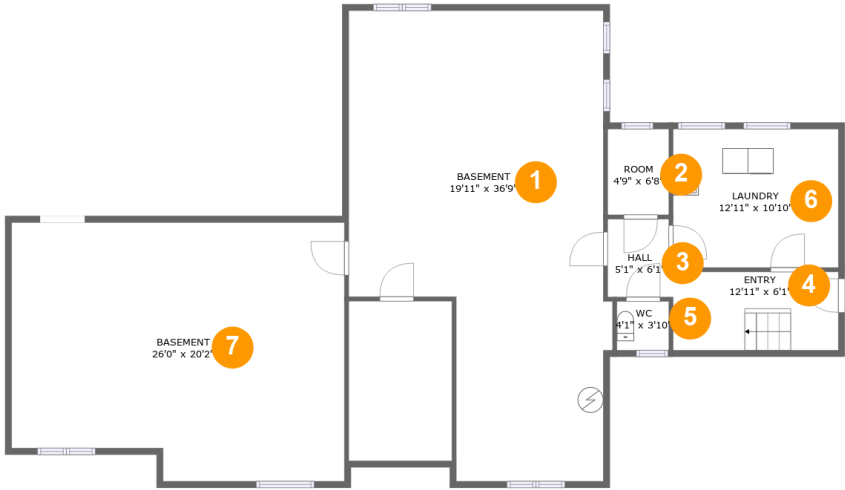
**3** Floors

**4,923** Gross living area sqft

**6,608** Total sqft

Home report

1010 Hawthorne Lane, Geneva, Kane County, Illinois, United States, 60134



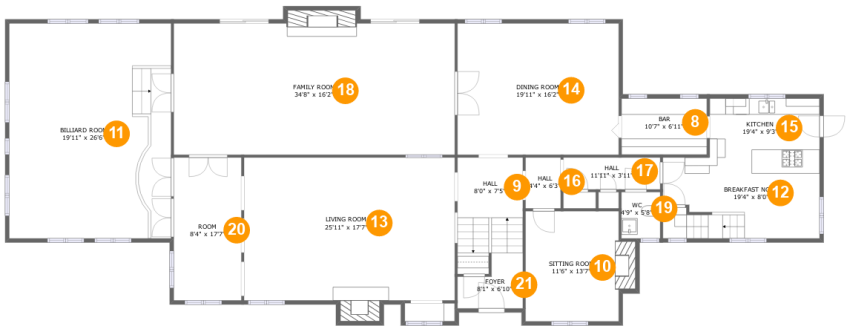
Room dimensions

Floor 1 Total sqft: 1639    Living area: 0

#		Dimensions	sqft	Counted as living area
1	Basement	19'11" x 36'9"	612 sq. ft	No
2	Room	4'9" x 6'8"	32 sq. ft	No
3	Hall	5'1" x 6'1"	30 sq. ft	No
4	Entry	12'11" x 6'1"	79 sq. ft	No
5	WC	4'1" x 3'10"	15 sq. ft	No
6	Laundry	12'11" x 10'10"	140 sq. ft	No
7	Basement	26'0" x 20'2"	494 sq. ft	No

Home report

1010 Hawthorne Lane, Geneva, Kane County, Illinois, United States, 60134



Room dimensions

Floor 2 Total sqft: 3076    Living area: 3045

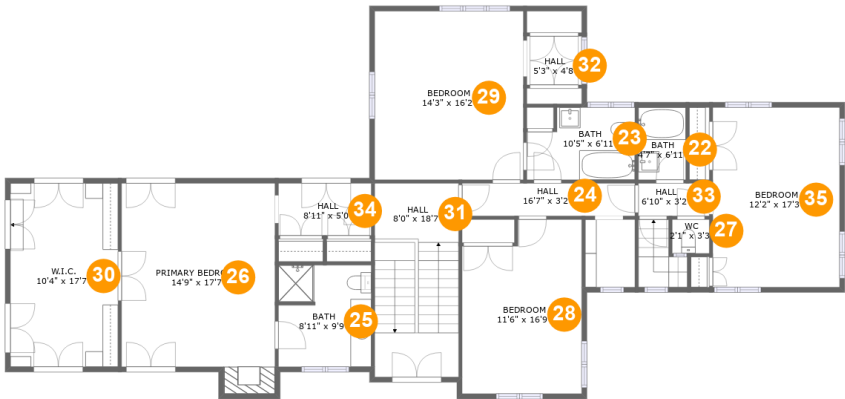
#		Dimensions	sqft	Counted as living area
8	Bar	10'7" x 6'11"	73 sq. ft	Yes
9	Hall	8'0" x 7'5"	95 sq. ft	Yes
10	Sitting Room	11'6" x 13'7"	168 sq. ft	Yes
11	Billiard Room	19'11" x 26'6"	529 sq. ft	Yes
12	Breakfast Nook	19'4" x 8'0"	152 sq. ft	Yes
13	Living Room	25'11" x 17'7"	472 sq. ft	Yes
14	Dining Room	19'11" x 16'2"	322 sq. ft	Yes
15	Kitchen	19'4" x 9'3"	137 sq. ft	Yes
16	Hall	4'4" x 6'3"	27 sq. ft	Yes
17	Hall	11'11" x 3'11"	47 sq. ft	Yes
18	Family Room	34'8" x 16'2"	575 sq. ft	Yes

Home report

1010 Hawthorne Lane, Geneva, Kane County, Illinois, United States, 60134

#		Dimensions	sqft	Counted as living area
19	WC	4'9" x 5'8"	27 sq. ft	Yes
20	Room	8'4" x 17'7"	147 sq. ft	Yes
21	Foyer	8'1" x 6'10"	43 sq. ft	Yes

1010 Hawthorne Lane, Geneva, Kane County, Illinois, United States, 60134



Room dimensions

Floor 3 Total sqft: 1893    Living area: 1878

#		Dimensions	sqft	Counted as living area
22	Bath	4'7" x 6'11"	32 sq. ft	Yes
23	Bath	10'5" x 6'11"	65 sq. ft	Yes
24	Hall	16'7" x 3'2"	52 sq. ft	Yes
25	Bath	8'11" x 9'9"	86 sq. ft	Yes
26	Primary Bedroom	14'9" x 17'7"	272 sq. ft	Yes
27	WC	2'1" x 3'3"	12 sq. ft	Yes
28	Bedroom	11'6" x 16'9"	178 sq. ft	Yes
29	Bedroom	14'3" x 16'2"	231 sq. ft	Yes
30	W.I.C.	10'4" x 17'7"	182 sq. ft	Yes
31	Hall	8'0" x 18'7"	150 sq. ft	Yes
32	Hall	5'3" x 4'8"	25 sq. ft	Yes

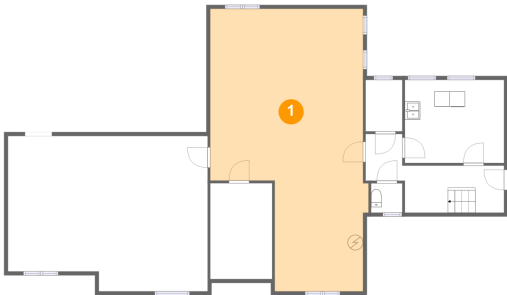
Home report

1010 Hawthorne Lane, Geneva, Kane County, Illinois, United States, 60134

#		Dimensions	sqft	Counted as living area
33	Hall	6'10" x 3'2"	21 sq. ft	Yes
34	Hall	8'11" x 5'0"	45 sq. ft	Yes
35	Bedroom	12'2" x 17'3"	210 sq. ft	Yes

1010 Hawthorne Lane, Geneva, Kane County, Illinois, United States, 60134

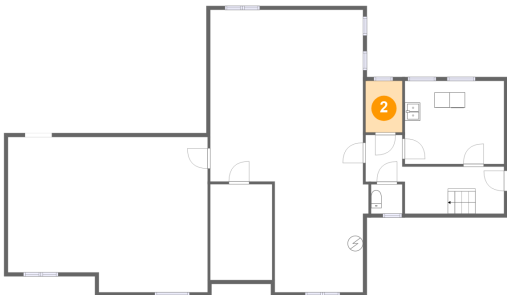
1 Floor 1 - Basement



Dimensions: 19'11" x 36'9"  
Area: 612 sq. ft  
Counted as living area: No

Heated: Yes  
Finished: No  
Enclosed: Yes  
Contiguous: Yes  
Permitted: Yes  
Wet space: No  
Addition: No  
Conversion: No

2 Floor 1 - Room



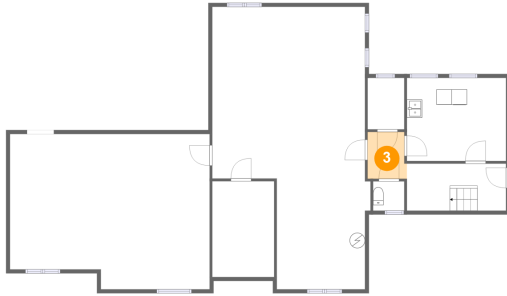
Dimensions: 4'9" x 6'8"  
Area: 32 sq. ft  
Counted as living area: No

Heated: Yes  
Finished: No  
Enclosed: Yes  
Contiguous: Yes  
Permitted: Yes  
Wet space: No  
Addition: No  
Conversion: No

## Home report

1010 Hawthorne Lane, Geneva, Kane County, Illinois, United States, 60134

### 3 Floor 1 - Hall



Dimensions: 5'1" x 6'1"  
Area: 30 sq. ft  
Counted as living area: No

Heated: Yes  
Finished: No  
Enclosed: Yes  
Contiguous: Yes  
Permitted: Yes  
Wet space: No  
Addition: No  
Conversion: No

### 4 Floor 1 - Entry



Dimensions: 12'11" x 6'1"  
Area: 79 sq. ft  
Counted as living area: No

Heated: Yes  
Finished: No  
Enclosed: Yes  
Contiguous: Yes  
Permitted: Yes  
Wet space: No  
Addition: No  
Conversion: No

### 5 Floor 1 - WC



Dimensions: 4'1" x 3'10"  
Area: 15 sq. ft  
Counted as living area: No

Heated: Yes  
Finished: No  
Enclosed: Yes  
Contiguous: Yes  
Permitted: Yes  
Wet space: No  
Addition: No  
Conversion: No

1010 Hawthorne Lane, Geneva, Kane County, Illinois, United States, 60134

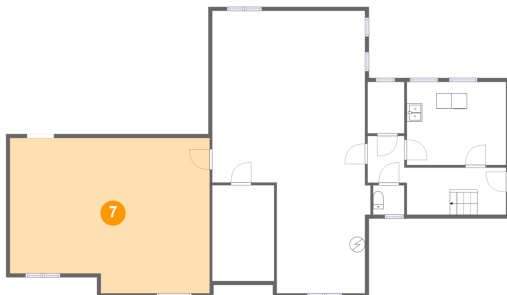
## 6 Floor 1 - Laundry



Dimensions: 12'11" x 10'10"  
Area: 140 sq. ft  
Counted as living area: No

Heated: Yes  
Finished: No  
Enclosed: Yes  
Contiguous: Yes  
Permitted: Yes  
Wet space: No  
Addition: No  
Conversion: No

## 7 Floor 1 - Basement



Dimensions: 26'0" x 20'2"  
Area: 494 sq. ft  
Counted as living area: No

Heated: Yes  
Finished: No  
Enclosed: Yes  
Contiguous: Yes  
Permitted: Yes  
Wet space: No  
Addition: No  
Conversion: No

## 8 Floor 2 - Bar



Dimensions: 10'7" x 6'11"  
Area: 73 sq. ft  
Counted as living area: Yes

Heated: Yes  
Finished: Yes  
Enclosed: Yes  
Contiguous: Yes  
Permitted: Yes  
Wet space: No  
Addition: No  
Conversion: No

1010 Hawthorne Lane, Geneva, Kane County, Illinois, United States, 60134

## 9 Floor 2 - Hall



Dimensions: 8'0" x 7'5"  
Area: 95 sq. ft  
Counted as living area: Yes

Heated: Yes  
Finished: Yes  
Enclosed: Yes  
Contiguous: Yes  
Permitted: Yes  
Wet space: No  
Addition: No  
Conversion: No

## 10 Floor 2 - Sitting Room



Dimensions: 11'6" x 13'7"  
Area: 168 sq. ft  
Counted as living area: Yes

Heated: Yes  
Finished: Yes  
Enclosed: Yes  
Contiguous: Yes  
Permitted: Yes  
Wet space: No  
Addition: No  
Conversion: No

## 11 Floor 2 - Billiard Room



Dimensions: 19'11" x 26'6"  
Area: 529 sq. ft  
Counted as living area: Yes

Heated: Yes  
Finished: Yes  
Enclosed: Yes  
Contiguous: Yes  
Permitted: Yes  
Wet space: No  
Addition: No  
Conversion: No

1010 Hawthorne Lane, Geneva, Kane County, Illinois, United States, 60134

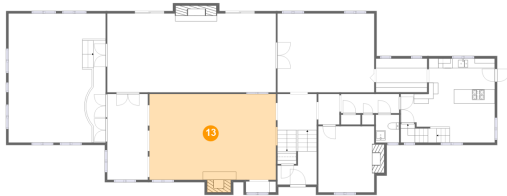
## 12 Floor 2 - Breakfast Nook



Dimensions: 19'4" x 8'0"  
Area: 152 sq. ft  
Counted as living area: Yes

Heated: Yes  
Finished: Yes  
Enclosed: Yes  
Contiguous: Yes  
Permitted: Yes  
Wet space: No  
Addition: No  
Conversion: No

## 13 Floor 2 - Living Room



Dimensions: 25'11" x 17'7"  
Area: 472 sq. ft  
Counted as living area: Yes

Heated: Yes  
Finished: Yes  
Enclosed: Yes  
Contiguous: Yes  
Permitted: Yes  
Wet space: No  
Addition: No  
Conversion: No

## 14 Floor 2 - Dining Room



Dimensions: 19'11" x 16'2"  
Area: 322 sq. ft  
Counted as living area: Yes

Heated: Yes  
Finished: Yes  
Enclosed: Yes  
Contiguous: Yes  
Permitted: Yes  
Wet space: No  
Addition: No  
Conversion: No

1010 Hawthorne Lane, Geneva, Kane County, Illinois, United States, 60134

## 15 Floor 2 - Kitchen



Dimensions: 19'4" x 9'3"  
Area: 137 sq. ft  
Counted as living area: Yes

Heated: Yes  
Finished: Yes  
Enclosed: Yes  
Contiguous: Yes  
Permitted: Yes  
Wet space: No  
Addition: No  
Conversion: No

## 16 Floor 2 - Hall



Dimensions: 4'4" x 6'3"  
Area: 27 sq. ft  
Counted as living area: Yes

Heated: Yes  
Finished: Yes  
Enclosed: Yes  
Contiguous: Yes  
Permitted: Yes  
Wet space: No  
Addition: No  
Conversion: No

## 17 Floor 2 - Hall

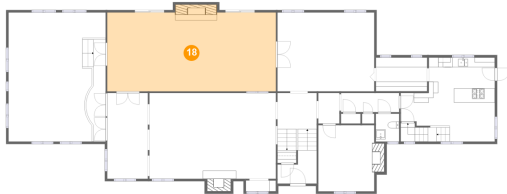


Dimensions: 11'11" x 3'11"  
Area: 47 sq. ft  
Counted as living area: Yes

Heated: Yes  
Finished: Yes  
Enclosed: Yes  
Contiguous: Yes  
Permitted: Yes  
Wet space: No  
Addition: No  
Conversion: No

1010 Hawthorne Lane, Geneva, Kane County, Illinois, United States, 60134

## 18 Floor 2 - Family Room



Dimensions: 34'8" x 16'2"  
Area: 575 sq. ft  
Counted as living area: Yes

Heated: Yes  
Finished: Yes  
Enclosed: Yes  
Contiguous: Yes  
Permitted: Yes  
Wet space: No  
Addition: No  
Conversion: No

## 19 Floor 2 - WC



Dimensions: 4'9" x 5'8"  
Area: 27 sq. ft  
Counted as living area: Yes

Heated: Yes  
Finished: Yes  
Enclosed: Yes  
Contiguous: Yes  
Permitted: Yes  
Wet space: Yes  
Addition: No  
Conversion: No

## 20 Floor 2 - Room



Dimensions: 8'4" x 17'7"  
Area: 147 sq. ft  
Counted as living area: Yes

Heated: Yes  
Finished: Yes  
Enclosed: Yes  
Contiguous: Yes  
Permitted: Yes  
Wet space: No  
Addition: No  
Conversion: No

1010 Hawthorne Lane, Geneva, Kane County, Illinois, United States, 60134

## 21 Floor 2 - Foyer



Dimensions: 8'1" x 6'10"  
Area: 43 sq. ft  
Counted as living area: Yes

Heated: Yes  
Finished: Yes  
Enclosed: Yes  
Contiguous: Yes  
Permitted: Yes  
Wet space: No  
Addition: No  
Conversion: No

## 22 Floor 3 - Bath



Dimensions: 4'7" x 6'11"  
Area: 32 sq. ft  
Counted as living area: Yes

Heated: Yes  
Finished: Yes  
Enclosed: Yes  
Contiguous: Yes  
Permitted: Yes  
Wet space: Yes  
Addition: No  
Conversion: No

## 23 Floor 3 - Bath



Dimensions: 10'5" x 6'11"  
Area: 65 sq. ft  
Counted as living area: Yes

Heated: Yes  
Finished: Yes  
Enclosed: Yes  
Contiguous: Yes  
Permitted: Yes  
Wet space: Yes  
Addition: No  
Conversion: No

### 24 Floor 3 - Hall



Dimensions: 16'7" x 3'2"  
Area: 52 sq. ft  
Counted as living area: Yes

Heated: Yes  
Finished: Yes  
Enclosed: Yes  
Contiguous: Yes  
Permitted: Yes  
Wet space: No  
Addition: No  
Conversion: No

### 25 Floor 3 - Bath



Dimensions: 8'11" x 9'9"  
Area: 86 sq. ft  
Counted as living area: Yes

Heated: Yes  
Finished: Yes  
Enclosed: Yes  
Contiguous: Yes  
Permitted: Yes  
Wet space: Yes  
Addition: No  
Conversion: No

### 26 Floor 3 - Primary Bedroom



Dimensions: 14'9" x 17'7"  
Area: 272 sq. ft  
Counted as living area: Yes

Heated: Yes  
Finished: Yes  
Enclosed: Yes  
Contiguous: Yes  
Permitted: Yes  
Wet space: No  
Addition: No  
Conversion: No

1010 Hawthorne Lane, Geneva, Kane County, Illinois, United States, 60134

### 27 Floor 3 - WC



Dimensions: 2'1" x 3'3"  
Area: 12 sq. ft  
Counted as living area: Yes

Heated: Yes  
Finished: Yes  
Enclosed: Yes  
Contiguous: Yes  
Permitted: Yes  
Wet space: No  
Addition: No  
Conversion: No

### 28 Floor 3 - Bedroom



Dimensions: 11'6" x 16'9"  
Area: 178 sq. ft  
Counted as living area: Yes

Heated: Yes  
Finished: Yes  
Enclosed: Yes  
Contiguous: Yes  
Permitted: Yes  
Wet space: No  
Addition: No  
Conversion: No

### 29 Floor 3 - Bedroom



Dimensions: 14'3" x 16'2"  
Area: 231 sq. ft  
Counted as living area: Yes

Heated: Yes  
Finished: Yes  
Enclosed: Yes  
Contiguous: Yes  
Permitted: Yes  
Wet space: No  
Addition: No  
Conversion: No

## Home report

1010 Hawthorne Lane, Geneva, Kane County, Illinois, United States, 60134

### 30 Floor 3 - W.I.C.

---

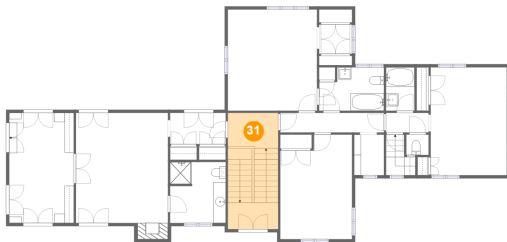


Dimensions: 10'4" x 17'7"  
Area: 182 sq. ft  
Counted as living area: Yes

Heated: Yes  
Finished: Yes  
Enclosed: Yes  
Contiguous: Yes  
Permitted: Yes  
Wet space: No  
Addition: No  
Conversion: No

### 31 Floor 3 - Hall

---

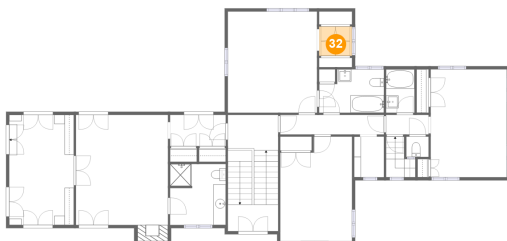


Dimensions: 8'0" x 18'7"  
Area: 150 sq. ft  
Counted as living area: Yes

Heated: Yes  
Finished: Yes  
Enclosed: Yes  
Contiguous: Yes  
Permitted: Yes  
Wet space: No  
Addition: No  
Conversion: No

### 32 Floor 3 - Hall

---



Dimensions: 5'3" x 4'8"  
Area: 25 sq. ft  
Counted as living area: Yes

Heated: Yes  
Finished: Yes  
Enclosed: Yes  
Contiguous: Yes  
Permitted: Yes  
Wet space: No  
Addition: No  
Conversion: No

1010 Hawthorne Lane, Geneva, Kane County, Illinois, United States, 60134

### 33 Floor 3 - Hall



Dimensions: 6'10" x 3'2"  
Area: 21 sq. ft  
Counted as living area: Yes

Heated: Yes  
Finished: Yes  
Enclosed: Yes  
Contiguous: Yes  
Permitted: Yes  
Wet space: No  
Addition: No  
Conversion: No

### 34 Floor 3 - Hall



Dimensions: 8'11" x 5'0"  
Area: 45 sq. ft  
Counted as living area: Yes

Heated: Yes  
Finished: Yes  
Enclosed: Yes  
Contiguous: Yes  
Permitted: Yes  
Wet space: No  
Addition: No  
Conversion: No

### 35 Floor 3 - Bedroom



Dimensions: 12'2" x 17'3"  
Area: 210 sq. ft  
Counted as living area: Yes

Heated: Yes  
Finished: Yes  
Enclosed: Yes  
Contiguous: Yes  
Permitted: Yes  
Wet space: No  
Addition: No  
Conversion: No