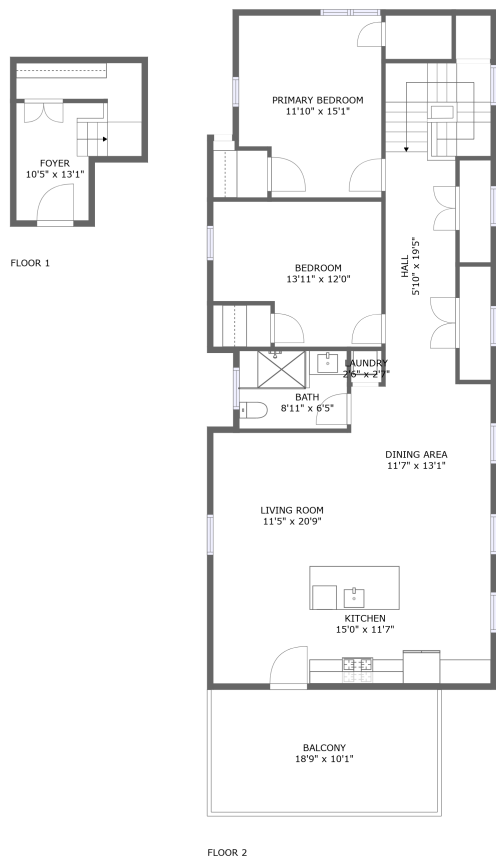



Home report


3231 Washington St,Boston,MA,US




Property summary




0
Garages



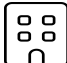
2
Bedrooms




1
Bathrooms




0
Half baths



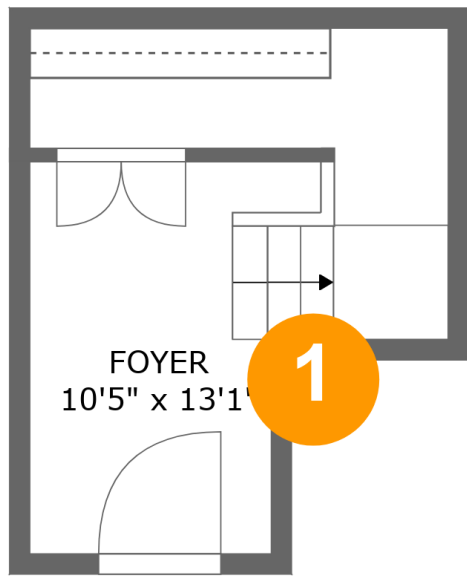
2
Floors



1,134
Gross living
area sqft



1,639
Total sqft



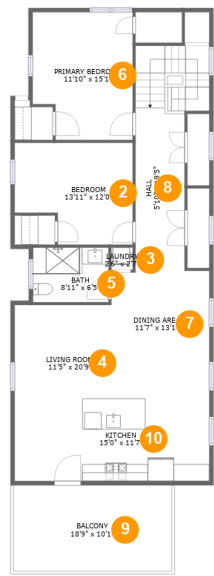
Room dimensions

Floor 1 Total sqft: 131 Living area: 131

#		Dimensions	sqft	Counted as living area
1	Foyer	10'5" x 13'1"	110 sq. ft	Yes

Home report

3231 Washington St,Boston,MA,US

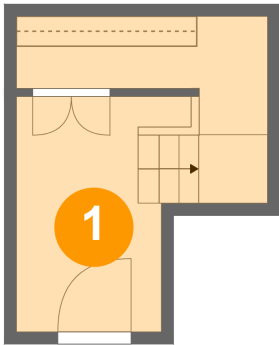


Room dimensions

Floor 2 Total sqft: 1508 Living area: 1003

#		Dimensions	sqft	Counted as living area
2	Bedroom	13'11" x 12'0"	124 sq. ft	Yes
3	Laundry	2'6" x 2'7"	7 sq. ft	Yes
4	Living Room	11'5" x 20'9"	137 sq. ft	Yes
5	Bath	8'11" x 6'5"	53 sq. ft	Yes
6	Primary Bedroom	11'10" x 15'1"	158 sq. ft	Yes
7	Dining Area	11'7" x 13'1"	113 sq. ft	Yes
8	Hall	5'10" x 19'5"	178 sq. ft	Yes
9	Balcony	18'9" x 10'1"	190 sq. ft	No
10	Kitchen	15'0" x 11'7"	140 sq. ft	Yes

1 Floor 1 - Foyer



Dimensions: 10'5" x 13'1"
Area: 110 sq. ft
Counted as living area: Yes

Heated: Yes
Finished: Yes
Enclosed: Yes
Contiguous: Yes
Permitted: Yes
Wet space: No
Addition: No
Conversion: No

2 Floor 2 - Bedroom



Dimensions: 13'11" x 12'0"
Area: 124 sq. ft
Counted as living area: Yes

Heated: Yes
Finished: Yes
Enclosed: Yes
Contiguous: Yes
Permitted: Yes
Wet space: No
Addition: No
Conversion: No

3 Floor 2 - Laundry



Dimensions: 2'6" x 2'7"
Area: 7 sq. ft
Counted as living area: Yes

Heated: Yes
Finished: Yes
Enclosed: Yes
Contiguous: Yes
Permitted: Yes
Wet space: No
Addition: No
Conversion: No

4 Floor 2 - Living Room



Dimensions: 11'5" x 20'9"
Area: 137 sq. ft
Counted as living area: Yes

Heated: Yes
Finished: Yes
Enclosed: Yes
Contiguous: Yes
Permitted: Yes
Wet space: No
Addition: No
Conversion: No

5 Floor 2 - Bath



Dimensions: 8'11" x 6'5"
Area: 53 sq. ft
Counted as living area: Yes

Heated: Yes
Finished: Yes
Enclosed: Yes
Contiguous: Yes
Permitted: Yes
Wet space: Yes
Addition: No
Conversion: No

6 Floor 2 - Primary Bedroom



Dimensions: 11'10" x 15'1"
Area: 158 sq. ft
Counted as living area: Yes

Heated: Yes
Finished: Yes
Enclosed: Yes
Contiguous: Yes
Permitted: Yes
Wet space: No
Addition: No
Conversion: No

7 Floor 2 - Dining Area



Dimensions: 11'7" x 13'1"
Area: 113 sq. ft
Counted as living area: Yes

Heated: Yes
Finished: Yes
Enclosed: Yes
Contiguous: Yes
Permitted: Yes
Wet space: No
Addition: No
Conversion: No

8 Floor 2 - Hall



Dimensions: 5'10" x 19'5"
Area: 178 sq. ft
Counted as living area: Yes

Heated: Yes
Finished: Yes
Enclosed: Yes
Contiguous: Yes
Permitted: Yes
Wet space: No
Addition: No
Conversion: No

9 Floor 2 - Balcony



Dimensions: 18'9" x 10'1"
Area: 190 sq. ft
Counted as living area: No

Heated: No
Finished: Yes
Enclosed: No
Contiguous: Yes
Permitted: Yes
Wet space: No
Addition: No
Conversion: No

10 Floor 2 - Kitchen



Dimensions: 15'0" x 11'7"
Area: 140 sq. ft
Counted as living area: Yes

Heated: Yes
Finished: Yes
Enclosed: Yes
Contiguous: Yes
Permitted: Yes
Wet space: No
Addition: No
Conversion: No