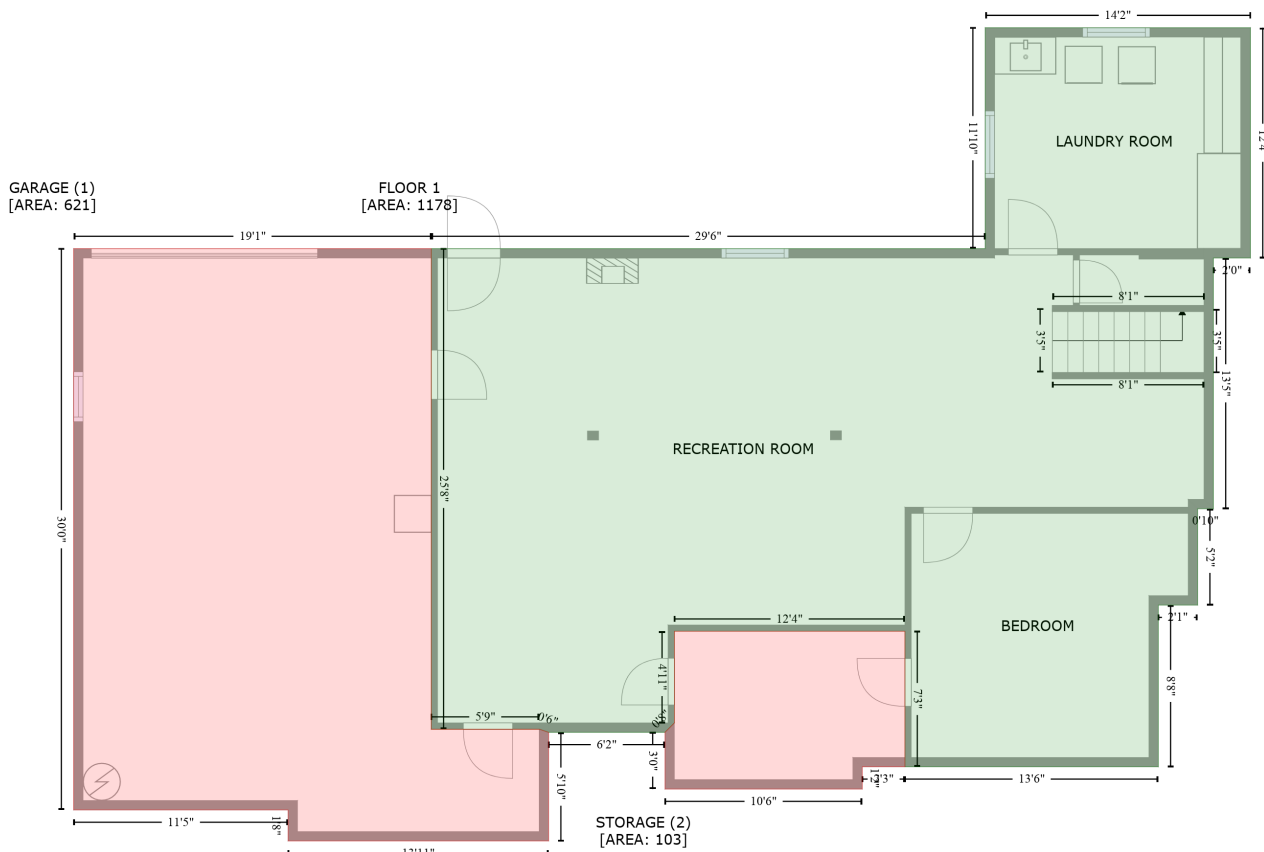


# 27723 Cricket Lane, Harvest, Limestone County, Alabama, United States, 35749

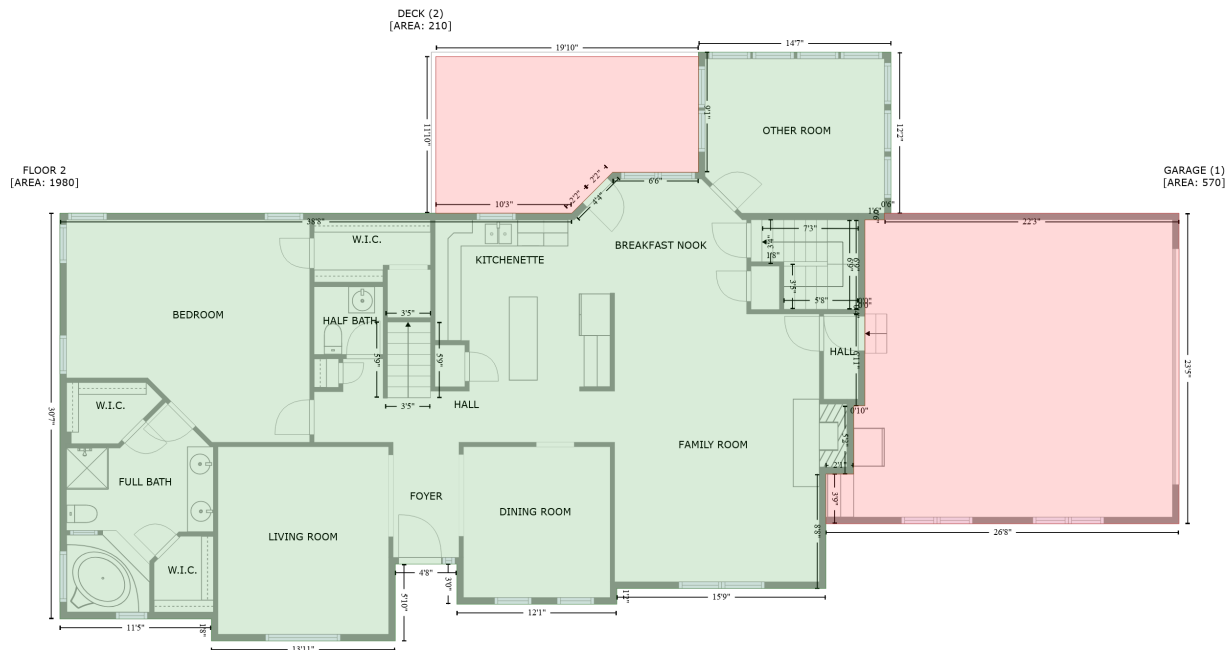
Gross Living Area: 4298 sq. ft



Space	Area (sq. ft)	Calculation
FLOOR 1 (Living area)	1178	Coordinate Polygon Area Algorithm using inches $-\left((753.3 + 753.3) * (32.9 - 180.5) + (753.3 + 729.6) * (180.5 - 180.5) + (729.6 + 729.6) * (180.5 - 341.1) + (729.6 + 719.5) * (341.1 - 341.1) + (719.5 + 719.5) * (341.1 - 402.8) + (719.5 + 694.3) * (402.8 - 402.8) + (694.3 + 694.3) * (402.8 - 506.4) + (694.3 + 532.2) * (506.4 - 506.4) + (532.2 + 532.2) * (506.4 - 419.5) + (532.2 + 384.6) * (419.5 - 419.5) + (384.6 + 384.6) * (419.5 - 478.3) + (384.6 + 378.6) * (478.3 - 484.3) + (378.6 + 304.1) * (484.3 - 484.3) + (304.1 + 298.1) * (484.3 - 482.3) + (298.1 + 229) * (482.3 - 482.3) + (229 + 229) * (482.3 - 174.5) + (229 + 583.5) * (174.5 - 174.5) + (583.5 + 583.5) * (174.5 - 32.9) + (583.5 + 753.3) * (32.9 - 32.9)\right) * 0.5 * 0.00694$
GARAGE (Non-living area)	621	$-\left((229 + 229) * (174.5 - 482.3) + (229 + 298.1) * (482.3 - 482.3) + (298.1 + 304.1) * (482.3 - 484.3) + (304.1 + 304.1) * (484.3 - 553.9) + (304.1 + 137.4) * (553.9 - 553.9) + (137.4 + 137.4) * (553.9 - 534) + (137.4 + 0.2) * (534 - 534) + (0.2 + 0.2) * (534 - 174.5) + (0.2 + 229) * (174.5 - 174.5)\right) * 0.5 * 0.00694$
STORAGE (Non-living area)	103	$-\left((532.2 + 532.2) * (419.5 - 506.4) + (532.2 + 504.8) * (506.4 - 506.4) + (504.8 + 504.8) * (506.4 - 520.6) + (504.8 + 378.6) * (520.6 - 520.6) + (378.6 + 378.6) * (520.6 - 484.3) + (378.6 + 384.6) * (484.3 - 478.3) + (384.6 + 384.6) * (478.3 - 419.5) + (384.6 + 532.2) * (419.5 - 419.5)\right) * 0.5 * 0.00694$

# 27723 Cricket Lane, Harvest, Limestone County, Alabama, United States, 35749

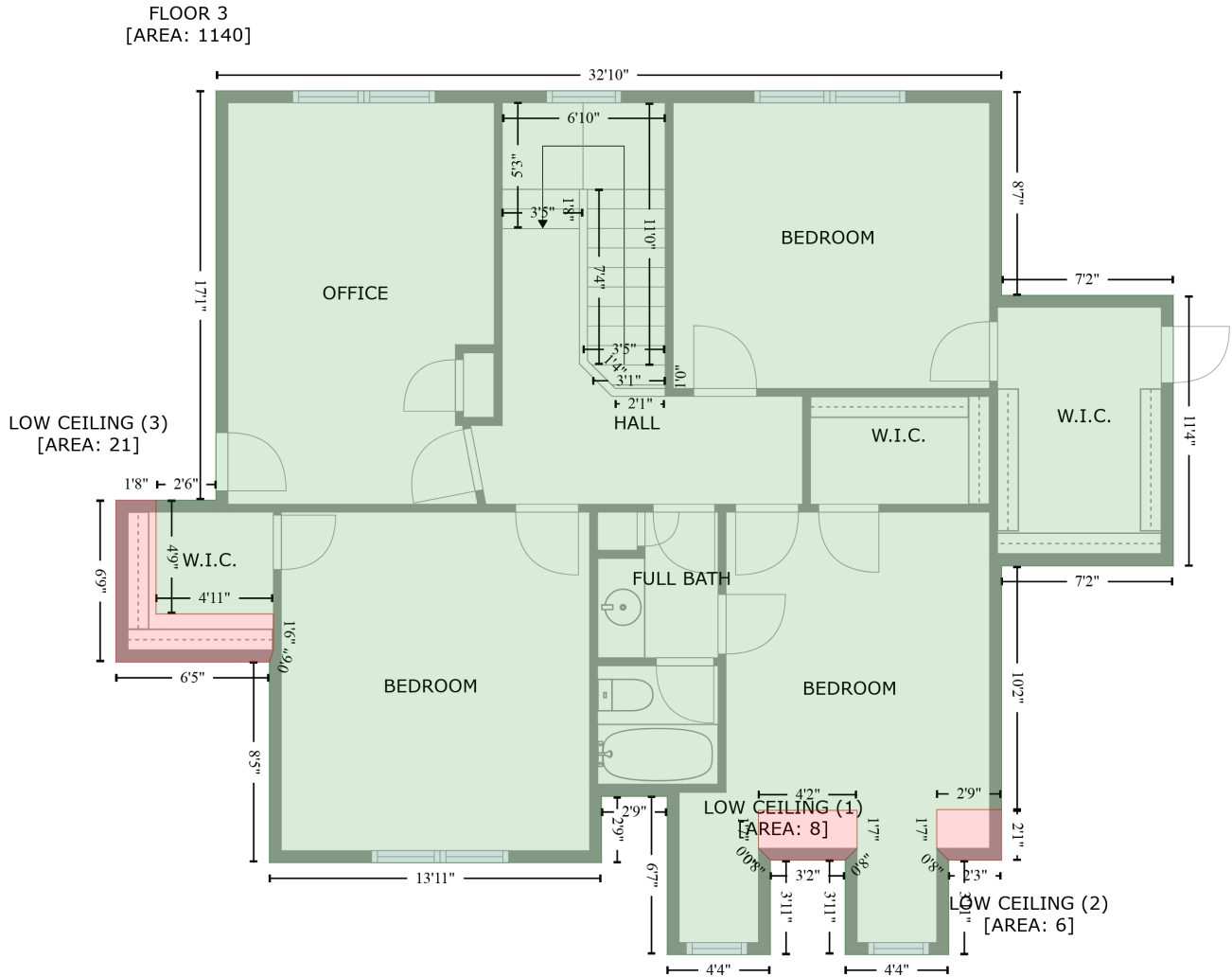
Gross Living Area: 4298 sq. ft



Space	Area (sq. ft)	Calculation
FLOOR 2 (Living area)	1980	Coordinate Polygon Area Algorithm using inches $-\left((753.3 + 753.3) * (21 - 166.8) + (753.3 + 747.3) * (166.8 - 166.8) + (747.3 + 747.3) * (166.8 - 172.8) + (747.3 + 729.6) * (172.8 - 172.8) + (729.6 + 729.6) * (172.8 - 254) + (729.6 + 729.7) * (254 - 254) + (729.7 + 729.7) * (254 - 258) + (729.7 + 729.6) * (258 - 258) + (729.6 + 729.6) * (258 - 341.1) + (729.6 + 719.5) * (341.1 - 341.1) + (719.5 + 719.5) * (341.1 - 402.8) + (719.5 + 694.3) * (402.8 - 402.8) + (694.3 + 694.3) * (402.8 - 506.4) + (694.3 + 504.8) * (506.4 - 506.4) + (504.8 + 504.8) * (506.4 - 520.6) + (504.8 + 359.9) * (520.6 - 520.6) + (359.9 + 359.9) * (520.6 - 484.3) + (359.9 + 304.1) * (484.3 - 484.3) + (304.1 + 304.1) * (484.3 - 553.9) + (304.1 + 137.4) * (553.9 - 553.9) + (137.4 + 137.4) * (553.9 - 534) + (137.4 + 0.2) * (534 - 534) + (0.2 + 0.2) * (534 - 166.8) + (0.2 + 464) * (166.8 - 166.8) + (464 + 501) * (166.8 - 129.8) + (501 + 578.7) * (129.8 - 129.8) + (578.7 + 578.7) * (129.8 - 21) + (578.7 + 753.3) * (21 - 21)\right) * 0.5 * 0.00694$
GARAGE (Non-living area)	570	$-\left((1014.3 + 1014.3) * (166.8 - 447.8) + (1014.3 + 694.3) * (447.8 - 447.8) + (694.3 + 694.3) * (447.8 - 402.8) + (694.3 + 719.5) * (402.8 - 402.8) + (719.5 + 719.5) * (402.8 - 341.1) + (719.5 + 729.6) * (341.1 - 341.1) + (729.6 + 729.6) * (341.1 - 258) + (729.6 + 729.7) * (258 - 258) + (729.7 + 729.7) * (258 - 254) + (729.7 + 729.6) * (254 - 172.8) + (729.6 + 747.3) * (172.8 - 172.8) + (747.3 + 747.3) * (172.8 - 166.8) + (747.3 + 1014.3) * (166.8 - 166.8)\right) * 0.5 * 0.00694$
DECK (Non-living area)	210	$-\left((578.7 + 578.7) * (25 - 129.8) + (578.7 + 501) * (129.8 - 129.8) + (501 + 482.7) * (129.8 - 148.4) + (482.7 + 464) * (148.4 - 166.8) + (464 + 340.8) * (166.8 - 166.8) + (340.8 + 340.8) * (166.8 - 25) + (340.8 + 578.7) * (25 - 25)\right) * 0.5 * 0.00694$

# 27723 Cricket Lane, Harvest, Limestone County, Alabama, United States, 35749

Gross Living Area: 4298 sq. ft



Space	Area (sq. ft)	Calculation <small>Coordinate Polygon Area Algorithm using inches</small>
FLOOR 3 (Living area)	1140	$  \begin{aligned}  & -((504.8 + 504.8) * (166.8 - 269.3) + (504.8 + 591) * (269.3 - 269.3) + (591 + 591) * (269.3 - 405) \\  & + (591 + 504.8) * (405 - 405) + (504.8 + 504.8) * (405 - 527.3) + (504.8 + 472.3) * (527.3 - 527.3) \\  & + (472.3 + 472.3) * (527.3 - 546.6) + (472.3 + 478.3) * (546.6 - 552.6) + (478.3 + 478.3) * (552.6 - \\  & 599.9) + (478.3 + 426.4) * (599.9 - 599.9) + (426.4 + 426.4) * (599.9 - 552.6) + (426.4 + 432.4) * \\  & (552.6 - 546.6) + (432.4 + 432.4) * (546.6 - 527.7) + (432.4 + 382.9) * (527.7 - 527.7) + (382.9 + \\  & 382.9) * (527.7 - 546.6) + (382.9 + 383.1) * (546.6 - 546.9) + (383.1 + 388.8) * (546.9 - 552.6) + \\  & (388.8 + 388.8) * (552.6 - 599.9) + (388.8 + 337.1) * (599.9 - 599.9) + (337.1 + 337.1) * (599.9 - \\  & 520.6) + (337.1 + 304.1) * (520.6 - 520.6) + (304.1 + 304.1) * (520.6 - 553.9) + (304.1 + 137.4) * \\  & (553.9 - 553.9) + (137.4 + 137.4) * (553.9 - 453.3) + (137.4 + 139.4) * (453.3 - 447.3) + (139.4 + \\  & 139.4) * (447.3 - 429.1) + (139.4 + 80.5) * (429.1 - 429.1) + (80.5 + 80.5) * (429.1 - 372.1) + (80.5 \\  & + 110.6) * (372.1 - 372.1) + (110.6 + 110.6) * (372.1 - 166.8) + (110.6 + 504.8) * (166.8 - 166.8)) \\  & * 0.5 * 0.00694  \end{aligned}  $
LOW CEILING	8	$  \begin{aligned}  & -((432.4 + 432.4) * (527.7 - 546.6) + (432.4 + 426.4) * (546.6 - 552.6) + (426.4 + 388.8) * (552.6 -  \end{aligned}  $

# 27723 Cricket Lane, Harvest, Limestone County, Alabama, United States, 35749

Gross Living Area: 4298 sq. ft

Space	Area (sq. ft)	Calculation <small>Coordinate Polygon Area Algorithm using inches</small>
(Non-living area)		$552.6 + (388.8 + 383.1) * (552.6 - 546.9) + (383.1 + 382.9) * (546.9 - 546.6) + (382.9 + 382.9) * (546.6 - 527.7) + (382.9 + 432.4) * (527.7 - 527.7) * 0.5 * 0.00694$
LOW CEILING (Non-living area)	6	$-((504.8 + 504.8) * (527.3 - 552.6) + (504.8 + 478.3) * (552.6 - 552.6) + (478.3 + 472.3) * (552.6 - 546.6) + (472.3 + 472.3) * (546.6 - 527.3) + (472.3 + 504.8) * (527.3 - 527.3)) * 0.5 * 0.00694$
LOW CEILING (Non-living area)	21	$-((80.5 + 80.5) * (372.1 - 429.1) + (80.5 + 139.4) * (429.1 - 429.1) + (139.4 + 139.4) * (429.1 - 447.3) + (139.4 + 137.4) * (447.3 - 453.3) + (137.4 + 60.4) * (453.3 - 453.3) + (60.4 + 60.4) * (453.3 - 372.1) + (60.4 + 80.5) * (372.1 - 372.1)) * 0.5 * 0.00694$