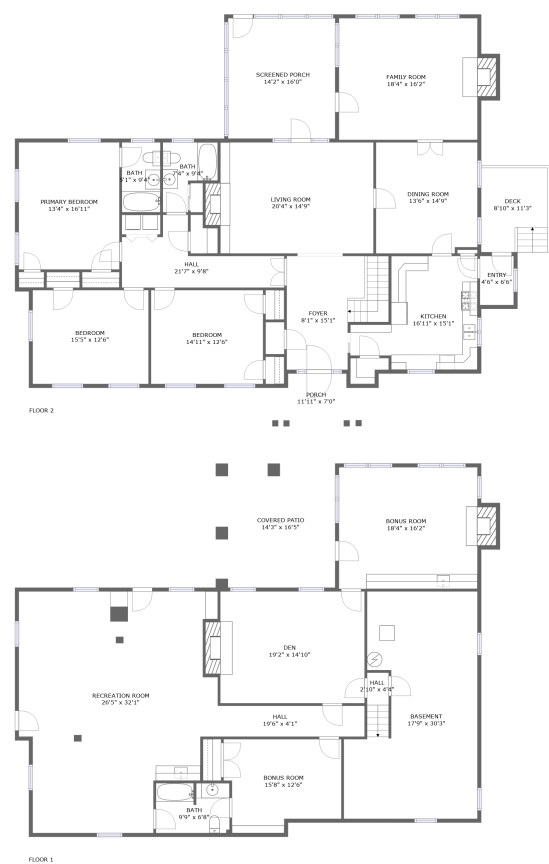


Home report

3848 Peakland Place, Peakland, Lynchburg, Lynchburg city,
Virginia, United States, 24503



Total Area: 3971 sq. ft

Floor 1: 1743 sq. ft, Floor 2: 2228 sq. ft

Excluded: Covered patio 235 sq. ft, Basement 447 sq. ft, Fireplace 30 sq. ft, Screened porch 228 sq. ft, Porch 76 sq. ft, Deck 98 sq. ft, Walls: 239 sq. ft

Property summary

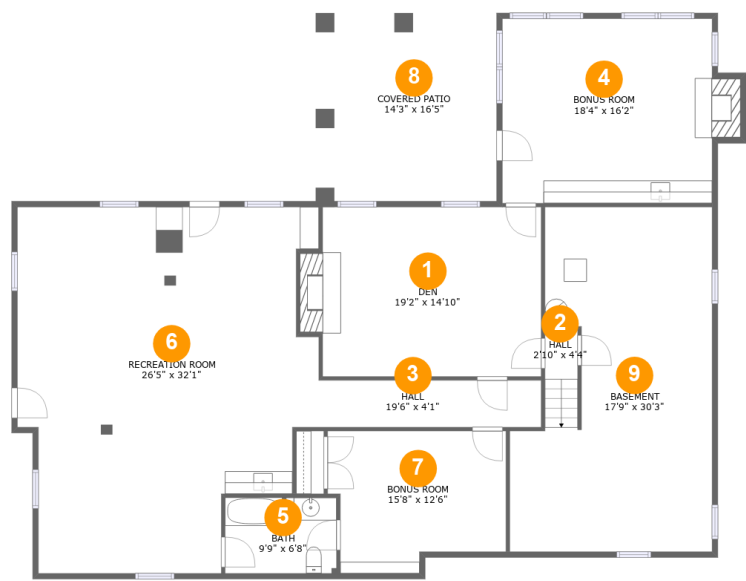
 **2** Floors

 **3** Bedrooms

 **3** Bathrooms

Home report

3848 Peakland Place, Peakland, Lynchburg, Lynchburg city,
Virginia, United States, 24503



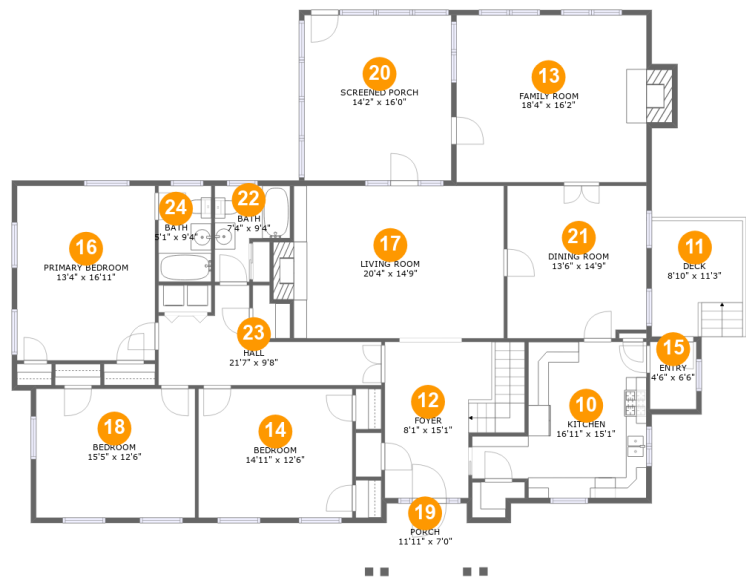
Room dimensions

Floor 1 Total:1743sqft Excluded: 697sqft

#		Max Dimensions	sqft	Included
1	Den	19'2" x 14'10"	299 sq. ft	Yes
2	Hall	2'10" x 4'4"	24 sq. ft	Yes
3	Hall	19'6" x 4'1"	80 sq. ft	Yes
4	Bonus Room	18'4" x 16'2"	310 sq. ft	Yes
5	Bath	9'9" x 6'8"	64 sq. ft	Yes
6	Recreation Room	26'5" x 32'1"	737 sq. ft	Yes
7	Bonus Room	15'8" x 12'6"	173 sq. ft	Yes
8	Covered Patio	14'3" x 16'5"	235 sq. ft	No
9	Basement	17'9" x 30'3"	447 sq. ft	No

Home report

3848 Peakland Place, Peakland, Lynchburg, Lynchburg city,
Virginia, United States, 24503



Room dimensions

Floor 2 Total:2228sqft Excluded: 417sqft

#		Max Dimensions	sqft	Included
10	Kitchen	16'11" x 15'1"	196 sq. ft	Yes
11	Deck	8'10" x 11'3"	98 sq. ft	No
12	Foyer	8'1" x 15'1"	170 sq. ft	Yes
13	Family Room	18'4" x 16'2"	310 sq. ft	Yes
14	Bedroom	14'11" x 12'6"	186 sq. ft	Yes
15	Entry	4'6" x 6'6"	29 sq. ft	Yes
16	Primary Bedroom	13'4" x 16'11"	226 sq. ft	Yes
17	Living Room	20'4" x 14'9"	312 sq. ft	Yes
18	Bedroom	15'5" x 12'6"	192 sq. ft	Yes
19	Porch	11'11" x 7'0"	76 sq. ft	No
20	Screened Porch	14'2" x 16'0"	228 sq. ft	No

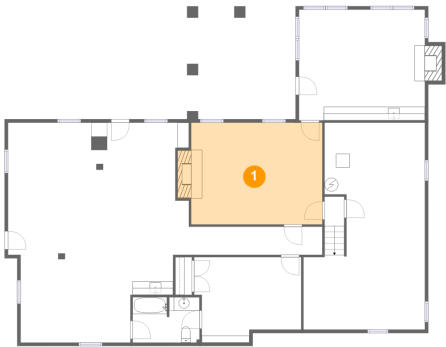
Home report

3848 Peakland Place, Peakland, Lynchburg, Lynchburg city,
Virginia, United States, 24503

#		Max Dimensions	sqft	Included
21	Dining Room	13'6" x 14'9"	196 sq. ft	Yes
22	Bath	7'4" x 9'4"	51 sq. ft	Yes
23	Hall	21'7" x 9'8"	123 sq. ft	Yes
24	Bath	5'1" x 9'4"	48 sq. ft	Yes

3848 Peakland Place, Peakland, Lynchburg, Lynchburg city,
Virginia, United States, 24503

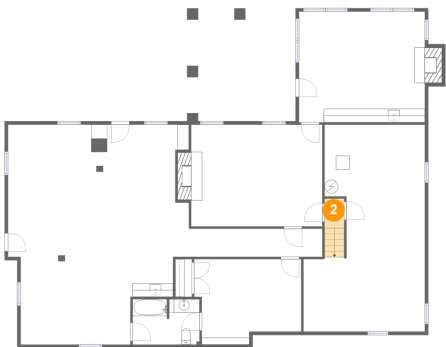
1 Floor 1 - Den



Max Dimensions: 19'2" x 14'10"
Calculated Area: 299 sq. ft
Included: Yes

Heated: Yes
Finished: Yes
Enclosed: Yes
Contiguous: Yes
Permitted: Yes
Wet space: No
Addition: No
Conversion: No

2 Floor 1 - Hall

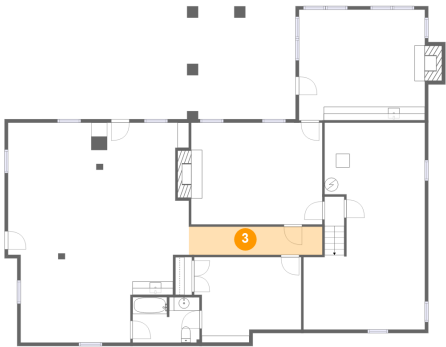


Max Dimensions: 2'10" x 4'4"
Calculated Area: 24 sq. ft
Included: Yes

Heated: Yes
Finished: Yes
Enclosed: Yes
Contiguous: Yes
Permitted: Yes
Wet space: No
Addition: No
Conversion: No

3848 Peakland Place, Peakland, Lynchburg, Lynchburg city,
Virginia, United States, 24503

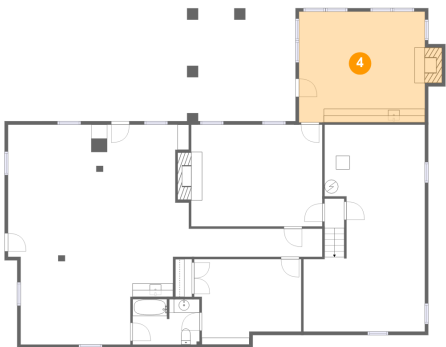
3 Floor 1 - Hall



Max Dimensions: 19'6" x 4'1"
Calculated Area: 80 sq. ft
Included: Yes

Heated: Yes
Finished: Yes
Enclosed: Yes
Contiguous: Yes
Permitted: Yes
Wet space: No
Addition: No
Conversion: No

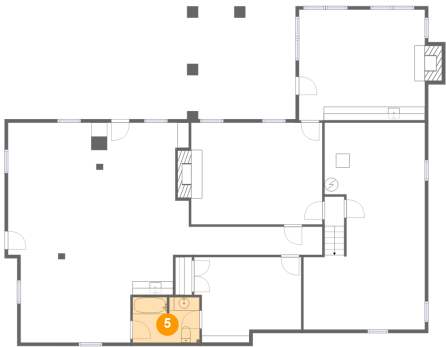
4 Floor 1 - Bonus Room



Max Dimensions: 18'4" x 16'2"
Calculated Area: 310 sq. ft
Included: Yes

Heated: Yes
Finished: Yes
Enclosed: Yes
Contiguous: Yes
Permitted: Yes
Wet space: No
Addition: No
Conversion: No

5 Floor 1 - Bath

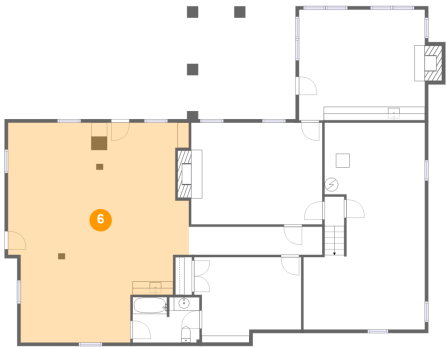


Max Dimensions: 9'9" x 6'8"
Calculated Area: 64 sq. ft
Included: Yes

Heated: Yes
Finished: Yes
Enclosed: Yes
Contiguous: Yes
Permitted: Yes
Wet space: Yes
Addition: No
Conversion: No

3848 Peakland Place, Peakland, Lynchburg, Lynchburg city,
Virginia, United States, 24503

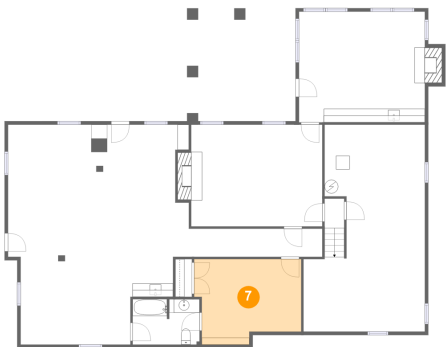
6 Floor 1 - Recreation Room



Max Dimensions: 26'5" x 32'1"
Calculated Area: 737 sq. ft
Included: Yes

Heated: Yes
Finished: Yes
Enclosed: Yes
Contiguous: Yes
Permitted: Yes
Wet space: No
Addition: No
Conversion: No

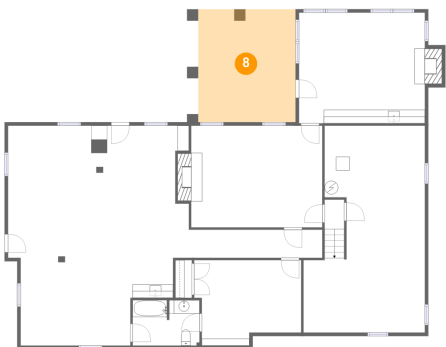
7 Floor 1 - Bonus Room



Max Dimensions: 15'8" x 12'6"
Calculated Area: 173 sq. ft
Included: Yes

Heated: Yes
Finished: Yes
Enclosed: Yes
Contiguous: Yes
Permitted: Yes
Wet space: No
Addition: No
Conversion: No

8 Floor 1 - Covered Patio

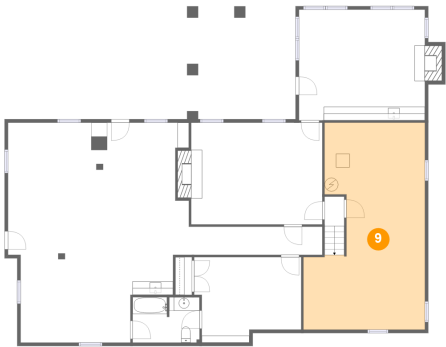


Max Dimensions: 14'3" x 16'5"
Calculated Area: 235 sq. ft
Included: No

Heated: No
Finished: Yes
Enclosed: No
Contiguous: Yes
Permitted: Yes
Wet space: No
Addition: No
Conversion: No

3848 Peakland Place, Peakland, Lynchburg, Lynchburg city,
Virginia, United States, 24503

9 Floor 1 - Basement



Max Dimensions: 17'9" x 30'3"
Calculated Area: 447 sq. ft
Included: No

Heated: Yes
Finished: No
Enclosed: Yes
Contiguous: Yes
Permitted: Yes
Wet space: No
Addition: No
Conversion: No

10 Floor 2 - Kitchen



Max Dimensions: 16'11" x 15'1"
Calculated Area: 196 sq. ft
Included: Yes

Heated: Yes
Finished: Yes
Enclosed: Yes
Contiguous: Yes
Permitted: Yes
Wet space: No
Addition: No
Conversion: No

11 Floor 2 - Deck



Max Dimensions: 8'10" x 11'3"
Calculated Area: 98 sq. ft
Included: No

Heated: No
Finished: Yes
Enclosed: No
Contiguous: Yes
Permitted: Yes
Wet space: No
Addition: No
Conversion: No

3848 Peakland Place, Peakland, Lynchburg, Lynchburg city,
Virginia, United States, 24503

12 Floor 2 - Foyer



Max Dimensions: 8'1" x 15'1"
Calculated Area: 170 sq. ft
Included: Yes

Heated: Yes
Finished: Yes
Enclosed: Yes
Contiguous: Yes
Permitted: Yes
Wet space: No
Addition: No
Conversion: No

13 Floor 2 - Family Room



Max Dimensions: 18'4" x 16'2"
Calculated Area: 310 sq. ft
Included: Yes

Heated: Yes
Finished: Yes
Enclosed: Yes
Contiguous: Yes
Permitted: Yes
Wet space: No
Addition: No
Conversion: No

14 Floor 2 - Bedroom



Max Dimensions: 14'11" x 12'6"
Calculated Area: 186 sq. ft
Included: Yes

Heated: Yes
Finished: Yes
Enclosed: Yes
Contiguous: Yes
Permitted: Yes
Wet space: No
Addition: No
Conversion: No

3848 Peakland Place, Peakland, Lynchburg, Lynchburg city,
Virginia, United States, 24503

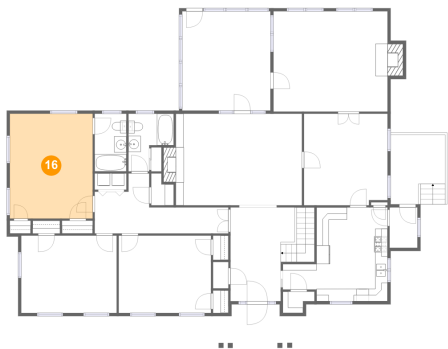
15 Floor 2 - Entry



Max Dimensions: 4'6" x 6'6"
Calculated Area: 29 sq. ft
Included: Yes

Heated: Yes
Finished: Yes
Enclosed: Yes
Contiguous: Yes
Permitted: Yes
Wet space: No
Addition: No
Conversion: No

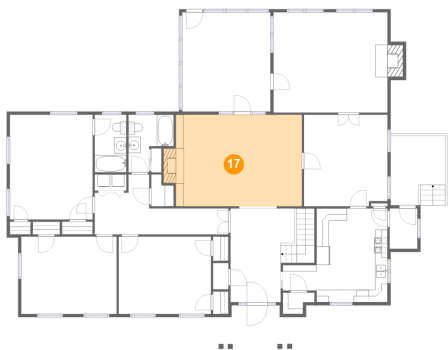
16 Floor 2 - Primary Bedroom



Max Dimensions: 13'4" x 16'11"
Calculated Area: 226 sq. ft
Included: Yes

Heated: Yes
Finished: Yes
Enclosed: Yes
Contiguous: Yes
Permitted: Yes
Wet space: No
Addition: No
Conversion: No

17 Floor 2 - Living Room



Max Dimensions: 20'4" x 14'9"
Calculated Area: 312 sq. ft
Included: Yes

Heated: Yes
Finished: Yes
Enclosed: Yes
Contiguous: Yes
Permitted: Yes
Wet space: No
Addition: No
Conversion: No

3848 Peakland Place, Peakland, Lynchburg, Lynchburg city,
Virginia, United States, 24503

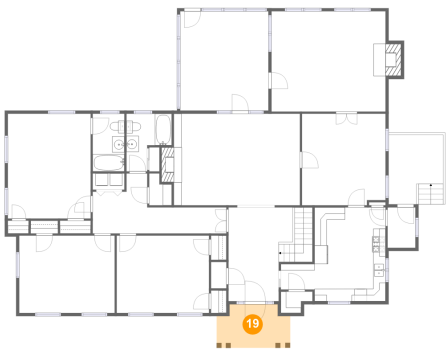
18 Floor 2 - Bedroom



Max Dimensions: 15'5" x 12'6"
Calculated Area: 192 sq. ft
Included: Yes

Heated: Yes
Finished: Yes
Enclosed: Yes
Contiguous: Yes
Permitted: Yes
Wet space: No
Addition: No
Conversion: No

19 Floor 2 - Porch



Max Dimensions: 11'11" x 7'0"
Calculated Area: 76 sq. ft
Included: No

Heated: No
Finished: Yes
Enclosed: No
Contiguous: Yes
Permitted: Yes
Wet space: No
Addition: No
Conversion: No

20 Floor 2 - Screened Porch



Max Dimensions: 14'2" x 16'0"
Calculated Area: 228 sq. ft
Included: No

Heated: No
Finished: Yes
Enclosed: No
Contiguous: Yes
Permitted: Yes
Wet space: No
Addition: No
Conversion: No

3848 Peakland Place, Peakland, Lynchburg, Lynchburg city,
Virginia, United States, 24503

21 Floor 2 - Dining Room



Max Dimensions: 13'6" x 14'9"
Calculated Area: 196 sq. ft
Included: Yes

Heated: Yes
Finished: Yes
Enclosed: Yes
Contiguous: Yes
Permitted: Yes
Wet space: No
Addition: No
Conversion: No

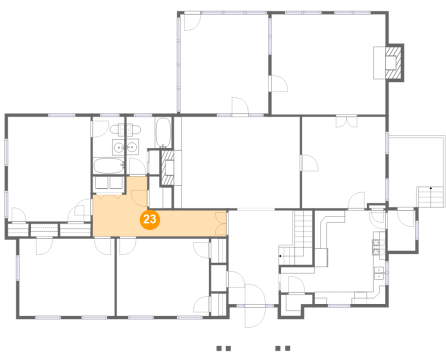
22 Floor 2 - Bath



Max Dimensions: 7'4" x 9'4"
Calculated Area: 51 sq. ft
Included: Yes

Heated: Yes
Finished: Yes
Enclosed: Yes
Contiguous: Yes
Permitted: Yes
Wet space: Yes
Addition: No
Conversion: No

23 Floor 2 - Hall



Max Dimensions: 21'7" x 9'8"
Calculated Area: 123 sq. ft
Included: Yes

Heated: Yes
Finished: Yes
Enclosed: Yes
Contiguous: Yes
Permitted: Yes
Wet space: No
Addition: No
Conversion: No

3848 Peakland Place, Peakland, Lynchburg, Lynchburg city,
Virginia, United States, 24503

24 Floor 2 - Bath



Max Dimensions: 5'1" x 9'4"
Calculated Area: 48 sq. ft
Included: Yes

Heated: Yes
Finished: Yes
Enclosed: Yes
Contiguous: Yes
Permitted: Yes
Wet space: Yes
Addition: No
Conversion: No