



Home report


2481 Laymantown Road, Troutville, Botetourt County, Virginia,  
United States, 24175




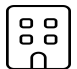
Property summary


 **0** Garages


 **3** Bedrooms

 **2** Bathrooms

 **0** Half baths

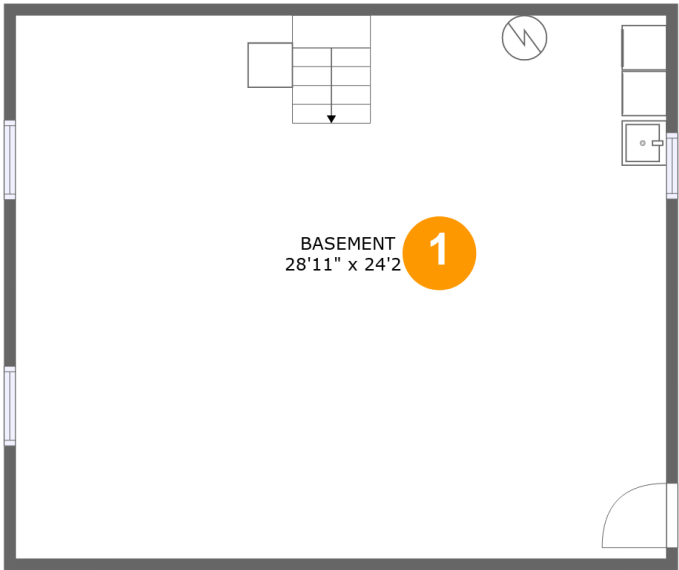
 **2** Floors

 **1,115** Gross living area sqft

 **2,182** Total sqft

Home report

2481 Laymantown Road, Troutville, Botetourt County, Virginia,  
United States, 24175



Room dimensions

Floor 1 Total sqft: 753    Living area: 0

#		Dimensions	sqft	Counted as living area
1	Basement	28'11" x 24'2"	699 sq. ft	No

Home report

2481 Laymantown Road, Troutville, Botetourt County, Virginia,  
United States, 24175



Room dimensions

Floor 2

Total sqft: 1429    Living area: 1115

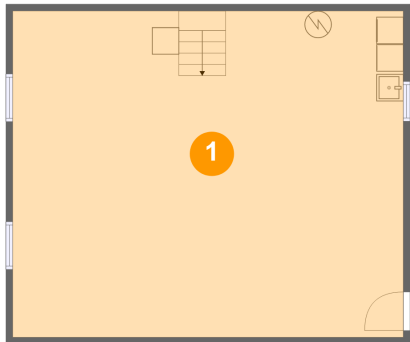
#		Dimensions	sqft	Counted as living area
2	Living Room	16'4" x 13'4"	216 sq. ft	Yes
3	Primary Bedroom	12'0" x 15'1"	164 sq. ft	Yes
4	Bath	8'3" x 5'0"	41 sq. ft	Yes
5	Hall	3'6" x 3'2"	36 sq. ft	Yes
6	Hall	6'3" x 5'0"	25 sq. ft	Yes
7	Bath	7'6" x 4'5"	33 sq. ft	Yes
8	Porch	29'3" x 7'6"	237 sq. ft	No
9	Eat-in Kitchen	12'10" x 11'6"	147 sq. ft	Yes
10	Room	14'3" x 6'4"	91 sq. ft	Yes
11	Deck	9'7" x 8'0"	77 sq. ft	No
12	Bedroom	12'0" x 8'9"	100 sq. ft	Yes

Home report

2481 Laymantown Road, Troutville, Botetourt County, Virginia,  
United States, 24175

#		Dimensions	sqft	Counted as living area
13	Bedroom	12'3" x 10'9"	118 sq. ft	Yes

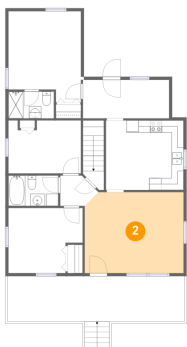
1 Floor 1 - Basement



Dimensions: 28'11" x 24'2"  
Area: 699 sq. ft  
Counted as living area: No

Heated: Yes  
Finished: No  
Enclosed: Yes  
Contiguous: Yes  
Permitted: Yes  
Wet space: No  
Addition: No  
Conversion: No

2 Floor 2 - Living Room



Dimensions: 16'4" x 13'4"  
Area: 216 sq. ft  
Counted as living area: Yes

Heated: Yes  
Finished: Yes  
Enclosed: Yes  
Contiguous: Yes  
Permitted: Yes  
Wet space: No  
Addition: No  
Conversion: No

3 Floor 2 - Primary Bedroom



Dimensions: 12'0" x 15'1"  
Area: 164 sq. ft  
Counted as living area: Yes

Heated: Yes  
Finished: Yes  
Enclosed: Yes  
Contiguous: Yes  
Permitted: Yes  
Wet space: No  
Addition: No  
Conversion: No

4 Floor 2 - Bath



Dimensions: 8'3" x 5'0"  
Area: 41 sq. ft  
Counted as living area: Yes

Heated: Yes  
Finished: Yes  
Enclosed: Yes  
Contiguous: Yes  
Permitted: Yes  
Wet space: Yes  
Addition: No  
Conversion: No

5 Floor 2 - Hall



Dimensions: 3'6" x 3'2"  
Area: 36 sq. ft  
Counted as living area: Yes

Heated: Yes  
Finished: Yes  
Enclosed: Yes  
Contiguous: Yes  
Permitted: Yes  
Wet space: No  
Addition: No  
Conversion: No

6 Floor 2 - Hall



Dimensions: 6'3" x 5'0"  
Area: 25 sq. ft  
Counted as living area: Yes

Heated: Yes  
Finished: Yes  
Enclosed: Yes  
Contiguous: Yes  
Permitted: Yes  
Wet space: No  
Addition: No  
Conversion: No

7 Floor 2 - Bath



Dimensions: 7'6" x 4'5"  
Area: 33 sq. ft  
Counted as living area: Yes

Heated: Yes  
Finished: Yes  
Enclosed: Yes  
Contiguous: Yes  
Permitted: Yes  
Wet space: Yes  
Addition: No  
Conversion: No

8 Floor 2 - Porch



Dimensions: 29'3" x 7'6"  
Area: 237 sq. ft  
Counted as living area: No

Heated: No  
Finished: Yes  
Enclosed: No  
Contiguous: Yes  
Permitted: Yes  
Wet space: No  
Addition: No  
Conversion: No

9 Floor 2 - Eat-in Kitchen



Dimensions: 12'10" x 11'6"  
Area: 147 sq. ft  
Counted as living area: Yes

Heated: Yes  
Finished: Yes  
Enclosed: Yes  
Contiguous: Yes  
Permitted: Yes  
Wet space: No  
Addition: No  
Conversion: No

10 Floor 2 - Room



Dimensions: 14'3" x 6'4"  
Area: 91 sq. ft  
Counted as living area: Yes

Heated: Yes  
Finished: Yes  
Enclosed: Yes  
Contiguous: Yes  
Permitted: Yes  
Wet space: No  
Addition: No  
Conversion: No

11 Floor 2 - Deck



Dimensions: 9'7" x 8'0"  
Area: 77 sq. ft  
Counted as living area: No

Heated: No  
Finished: Yes  
Enclosed: No  
Contiguous: Yes  
Permitted: Yes  
Wet space: No  
Addition: No  
Conversion: No



2481 Laymantown Road, Troutville, Botetourt County, Virginia,  
United States, 24175

12 Floor 2 - Bedroom



Dimensions: 12'0" x 8'9"  
Area: 100 sq. ft  
Counted as living area: Yes

Heated: Yes  
Finished: Yes  
Enclosed: Yes  
Contiguous: Yes  
Permitted: Yes  
Wet space: No  
Addition: No  
Conversion: No

13 Floor 2 - Bedroom



Dimensions: 12'3" x 10'9"  
Area: 118 sq. ft  
Counted as living area: Yes

Heated: Yes  
Finished: Yes  
Enclosed: Yes  
Contiguous: Yes  
Permitted: Yes  
Wet space: No  
Addition: No  
Conversion: No