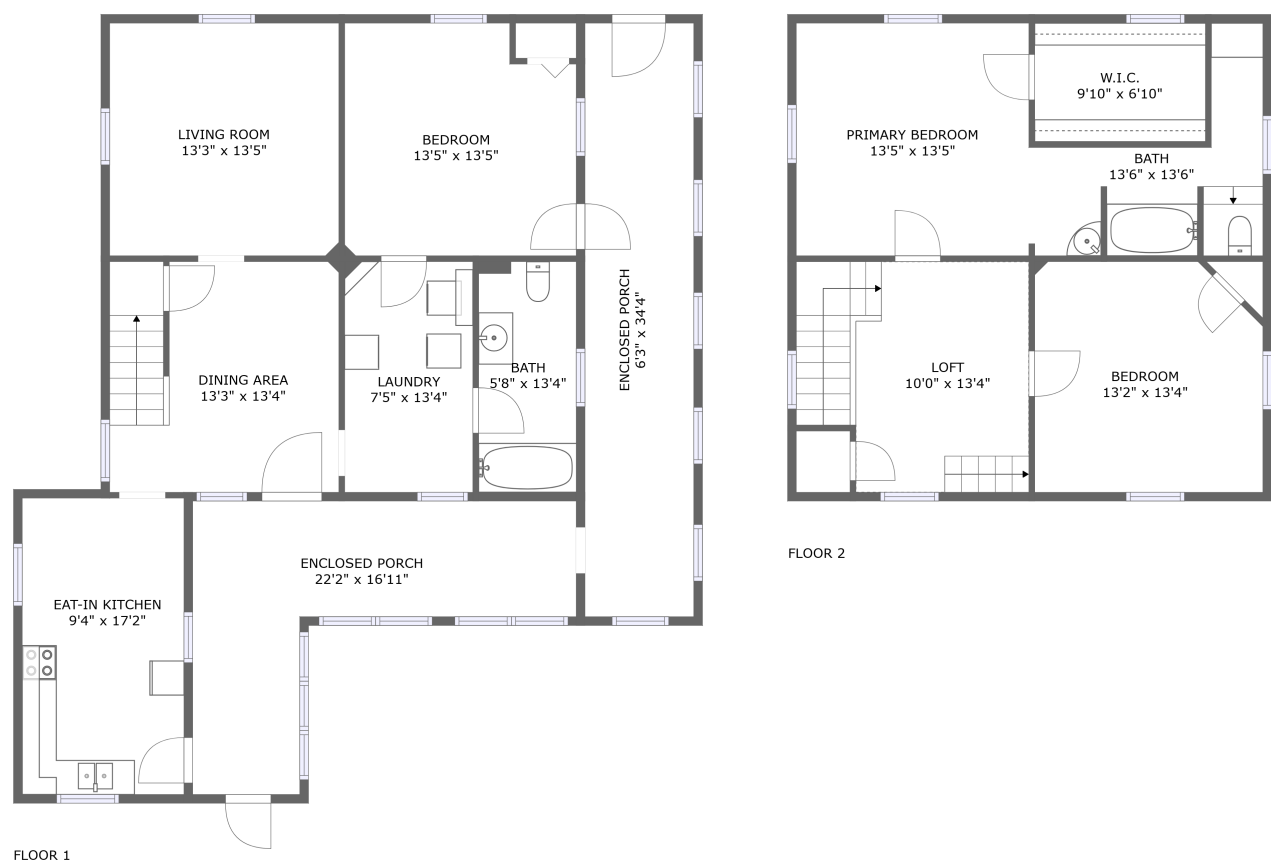


Home report

5951 Roanoke Road, Shawsville, Montgomery County, Virginia,  
United States, 24162



**Total Area: 1758 sq. ft**  
Floor 1: 971 sq. ft, Floor 2: 787 sq. ft  
Excluded: Enclosed Porch 472 sq. ft

Property summary

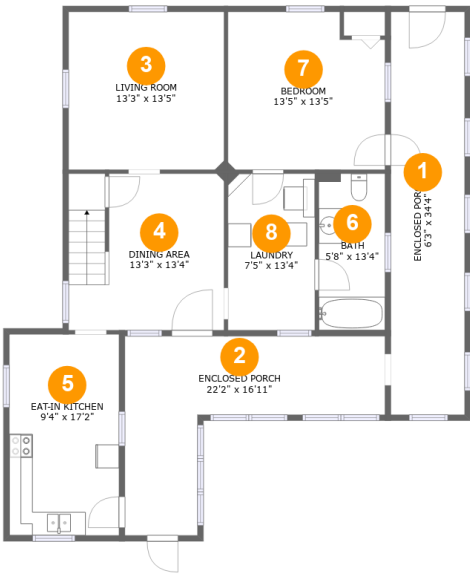
 **2** Floors

 **3** Bedrooms

 **2** Bathrooms

Home report

5951 Roanoke Road, Shawsville, Montgomery County, Virginia,  
United States, 24162



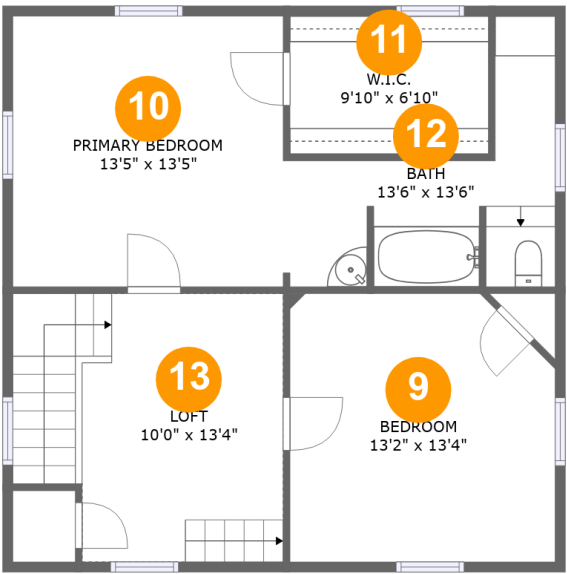
Room dimensions

Floor 1 Total:971sqft Excluded: 472sqft

#		Max Dimensions	sqft	Included
1	Enclosed Porch	6'3" x 34'4"	216 sq. ft	No
2	Enclosed Porch	22'2" x 16'11"	212 sq. ft	No
3	Living Room	13'3" x 13'5"	178 sq. ft	Yes
4	Dining Area	13'3" x 13'4"	175 sq. ft	Yes
5	Eat-in Kitchen	9'4" x 17'2"	160 sq. ft	Yes
6	Bath	5'8" x 13'4"	75 sq. ft	Yes
7	Bedroom	13'5" x 13'5"	171 sq. ft	Yes
8	Laundry	7'5" x 13'4"	99 sq. ft	Yes

Home report

5951 Roanoke Road, Shawsville, Montgomery County, Virginia,  
United States, 24162



Room dimensions

Floor 2 Total:787sqft   Excluded: 0sqft

#		Max Dimensions	sqft	Included
9	Bedroom	13'2" x 13'4"	169 sq. ft	Yes
10	Primary Bedroom	13'5" x 13'5"	181 sq. ft	Yes
11	W.I.C.	9'10" x 6'10"	68 sq. ft	Yes
12	Bath	13'6" x 13'6"	103 sq. ft	Yes
13	Loft	10'0" x 13'4"	166 sq. ft	Yes

1 Floor 1 - Enclosed Porch



Max Dimensions: 6'3" x 34'4"  
Calculated Area: 216 sq. ft  
Included: No

Heated: No  
Finished: Yes  
Enclosed: No  
Contiguous: Yes  
Permitted: Yes  
Wet space: No  
Addition: No  
Conversion: No

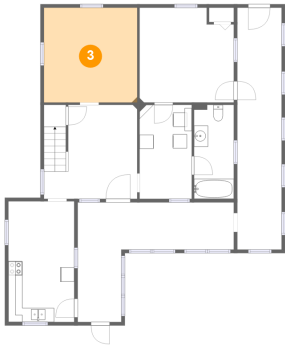
2 Floor 1 - Enclosed Porch



Max Dimensions: 22'2" x 16'11"  
Calculated Area: 212 sq. ft  
Included: No

Heated: No  
Finished: Yes  
Enclosed: No  
Contiguous: Yes  
Permitted: Yes  
Wet space: No  
Addition: No  
Conversion: No

3 Floor 1 - Living Room



Max Dimensions: 13'3" x 13'5"  
Calculated Area: 178 sq. ft  
Included: Yes

Heated: Yes  
Finished: Yes  
Enclosed: Yes  
Contiguous: Yes  
Permitted: Yes  
Wet space: No  
Addition: No  
Conversion: No

4 Floor 1 - Dining Area



Max Dimensions: 13'3" x 13'4"  
Calculated Area: 175 sq. ft  
Included: Yes

Heated: Yes  
Finished: Yes  
Enclosed: Yes  
Contiguous: Yes  
Permitted: Yes  
Wet space: No  
Addition: No  
Conversion: No

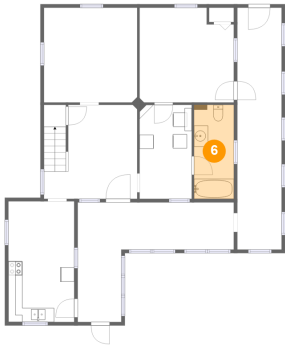
5 Floor 1 - Eat-in Kitchen



Max Dimensions: 9'4" x 17'2"  
Calculated Area: 160 sq. ft  
Included: Yes

Heated: Yes  
Finished: Yes  
Enclosed: Yes  
Contiguous: Yes  
Permitted: Yes  
Wet space: No  
Addition: No  
Conversion: No

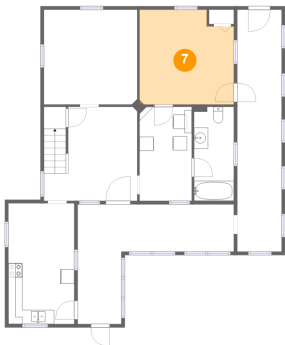
6 Floor 1 - Bath



Max Dimensions: 5'8" x 13'4"  
Calculated Area: 75 sq. ft  
Included: Yes

Heated: Yes  
Finished: Yes  
Enclosed: Yes  
Contiguous: Yes  
Permitted: Yes  
Wet space: Yes  
Addition: No  
Conversion: No

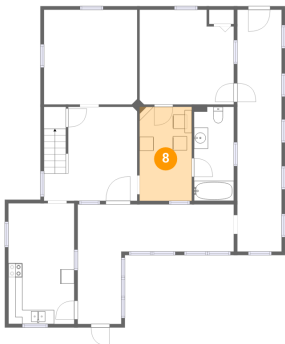
7 Floor 1 - Bedroom



Max Dimensions: 13'5" x 13'5"  
Calculated Area: 171 sq. ft  
Included: Yes

Heated: Yes  
Finished: Yes  
Enclosed: Yes  
Contiguous: Yes  
Permitted: Yes  
Wet space: No  
Addition: No  
Conversion: No

8 Floor 1 - Laundry

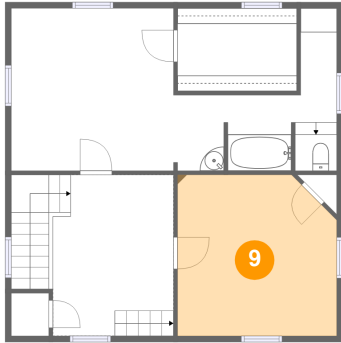


Max Dimensions: 7'5" x 13'4"  
Calculated Area: 99 sq. ft  
Included: Yes

Heated: Yes  
Finished: Yes  
Enclosed: Yes  
Contiguous: Yes  
Permitted: Yes  
Wet space: No  
Addition: No  
Conversion: No

5951 Roanoke Road, Shawsville, Montgomery County, Virginia,  
United States, 24162

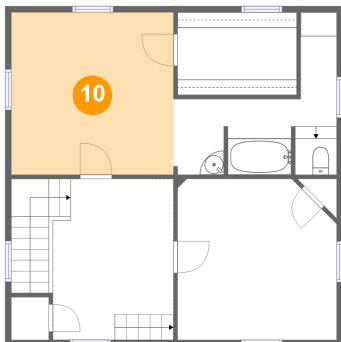
## 9 Floor 2 - Bedroom



Max Dimensions: 13'2" x 13'4"  
Calculated Area: 169 sq. ft  
Included: Yes

Heated: Yes  
Finished: Yes  
Enclosed: Yes  
Contiguous: Yes  
Permitted: Yes  
Wet space: No  
Addition: No  
Conversion: No

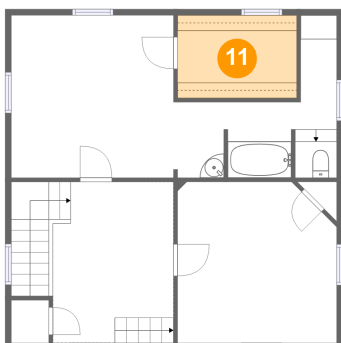
## 10 Floor 2 - Primary Bedroom



Max Dimensions: 13'5" x 13'5"  
Calculated Area: 181 sq. ft  
Included: Yes

Heated: Yes  
Finished: Yes  
Enclosed: Yes  
Contiguous: Yes  
Permitted: Yes  
Wet space: No  
Addition: No  
Conversion: No

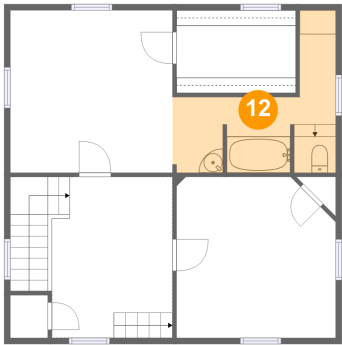
## 11 Floor 2 - W.I.C.



Max Dimensions: 9'10" x 6'10"  
Calculated Area: 68 sq. ft  
Included: Yes

Heated: Yes  
Finished: Yes  
Enclosed: Yes  
Contiguous: Yes  
Permitted: Yes  
Wet space: No  
Addition: No  
Conversion: No

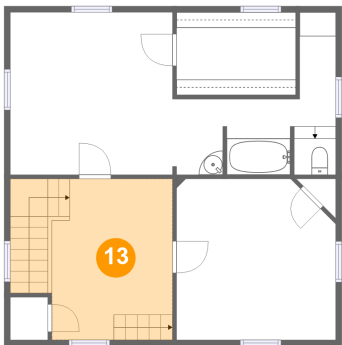
12 Floor 2 - Bath



Max Dimensions: 13'6" x 13'6"  
Calculated Area: 103 sq. ft  
Included: Yes

Heated: Yes  
Finished: Yes  
Enclosed: Yes  
Contiguous: Yes  
Permitted: Yes  
Wet space: Yes  
Addition: No  
Conversion: No

13 Floor 2 - Loft



Max Dimensions: 10'0" x 13'4"  
Calculated Area: 166 sq. ft  
Included: Yes

Heated: Yes  
Finished: Yes  
Enclosed: Yes  
Contiguous: Yes  
Permitted: Yes  
Wet space: No  
Addition: No  
Conversion: No