



Home report


3003 Augusta Ln,Jeannette,PA,US





Property summary


 **1** Garages


 **3** Bedrooms

 **2** Bathrooms

 **1** Half baths

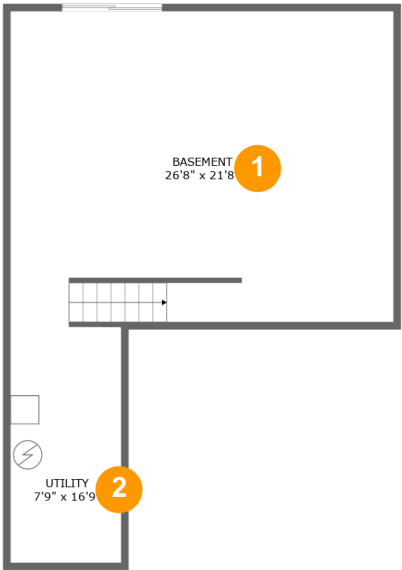
 **3** Floors

 **1,775** Gross living area sqft

 **3,140** Total sqft

Home report

3003 Augusta Ln,Jeannette,PA,US



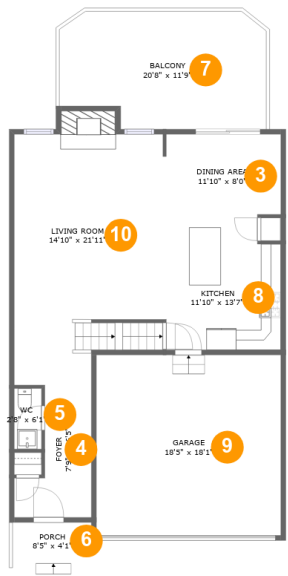
Room dimensions

Floor 1 Total sqft: 758    Living area: 0

#		Dimensions	sqft	Counted as living area
1	Basement	26'8" x 21'8"	577 sq. ft	No
2	Utility	7'9" x 16'9"	129 sq. ft	No

Home report

3003 Augusta Ln,Jeannette,PA,US



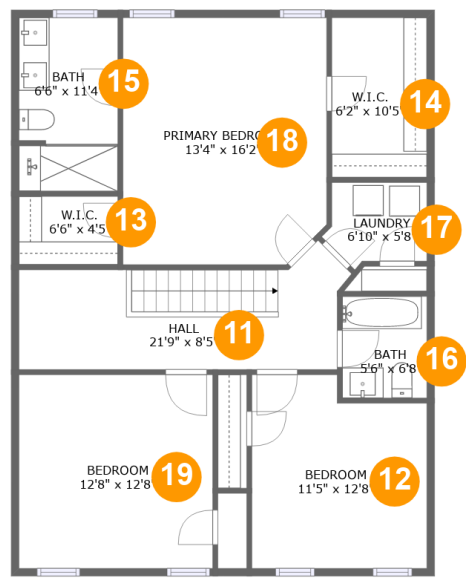
Room dimensions

Floor 2 Total sqft: 1377    Living area: 770

#		Dimensions	sqft	Counted as living area
3	Dining Area	11'10" x 8'0"	94 sq. ft	Yes
4	Foyer	7'9" x 16'5"	98 sq. ft	Yes
5	WC	2'8" x 6'1"	17 sq. ft	Yes
6	Porch	8'5" x 4'1"	34 sq. ft	No
7	Balcony	20'8" x 11'9"	225 sq. ft	No
8	Kitchen	11'10" x 13'7"	152 sq. ft	Yes
9	Garage	18'5" x 18'1"	333 sq. ft	No
10	Living Room	14'10" x 21'11"	334 sq. ft	Yes

Home report

3003 Augusta Ln,Jeannette,PA,US

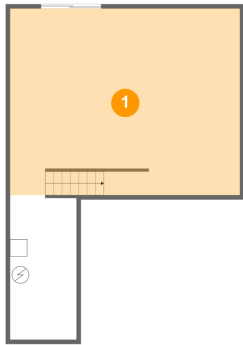


Room dimensions

Floor 3 Total sqft: 1005    Living area: 1005

#		Dimensions	sqft	Counted as living area
11	Hall	21'9" x 8'5"	140 sq. ft	Yes
12	Bedroom	11'5" x 12'8"	134 sq. ft	Yes
13	W.I.C.	6'6" x 4'5"	29 sq. ft	Yes
14	W.I.C.	6'2" x 10'5"	65 sq. ft	Yes
15	Bath	6'6" x 11'4"	73 sq. ft	Yes
16	Bath	5'6" x 6'8"	37 sq. ft	Yes
17	Laundry	6'10" x 5'8"	32 sq. ft	Yes
18	Primary Bedroom	13'4" x 16'2"	211 sq. ft	Yes
19	Bedroom	12'8" x 12'8"	160 sq. ft	Yes

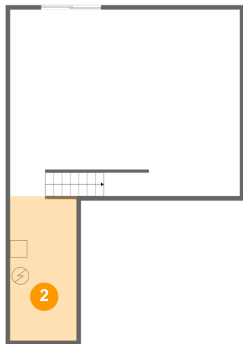
1 Floor 1 - Basement



Dimensions: 26'8" x 21'8"  
Area: 577 sq. ft  
Counted as living area: No

Heated: Yes  
Finished: No  
Enclosed: Yes  
Contiguous: Yes  
Permitted: Yes  
Wet space: No  
Addition: No  
Conversion: No

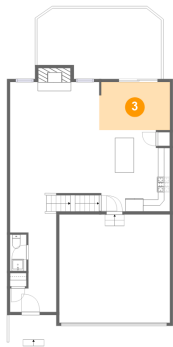
2 Floor 1 - Utility



Dimensions: 7'9" x 16'9"  
Area: 129 sq. ft  
Counted as living area: No

Heated: Yes  
Finished: No  
Enclosed: Yes  
Contiguous: Yes  
Permitted: Yes  
Wet space: No  
Addition: No  
Conversion: No

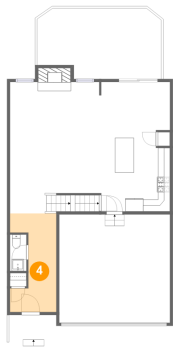
3 Floor 2 - Dining Area



Dimensions: 11'10" x 8'0"  
Area: 94 sq. ft  
Counted as living area: Yes

Heated: Yes  
Finished: Yes  
Enclosed: Yes  
Contiguous: Yes  
Permitted: Yes  
Wet space: No  
Addition: No  
Conversion: No

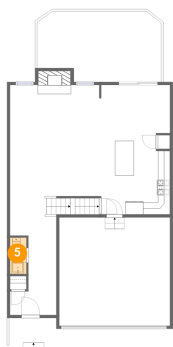
4 Floor 2 - Foyer



Dimensions: 7'9" x 16'5"  
Area: 98 sq. ft  
Counted as living area: Yes

Heated: Yes  
Finished: Yes  
Enclosed: Yes  
Contiguous: Yes  
Permitted: Yes  
Wet space: No  
Addition: No  
Conversion: No

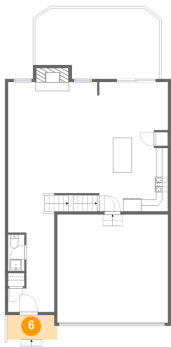
5 Floor 2 - WC



Dimensions: 2'8" x 6'1"  
Area: 17 sq. ft  
Counted as living area: Yes

Heated: Yes  
Finished: Yes  
Enclosed: Yes  
Contiguous: Yes  
Permitted: Yes  
Wet space: Yes  
Addition: No  
Conversion: No

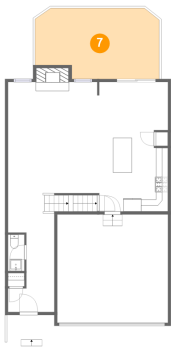
6 Floor 2 - Porch



Dimensions: 8'5" x 4'1"  
Area: 34 sq. ft  
Counted as living area: No

Heated: No  
Finished: Yes  
Enclosed: No  
Contiguous: Yes  
Permitted: Yes  
Wet space: No  
Addition: No  
Conversion: No

7 Floor 2 - Balcony



Dimensions: 20'8" x 11'9"  
Area: 225 sq. ft  
Counted as living area: No

Heated: No  
Finished: Yes  
Enclosed: No  
Contiguous: Yes  
Permitted: Yes  
Wet space: No  
Addition: No  
Conversion: No

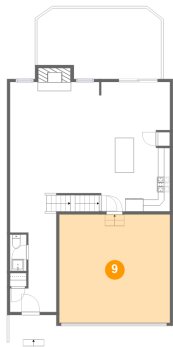
8 Floor 2 - Kitchen



Dimensions: 11'10" x 13'7"  
Area: 152 sq. ft  
Counted as living area: Yes

Heated: Yes  
Finished: Yes  
Enclosed: Yes  
Contiguous: Yes  
Permitted: Yes  
Wet space: No  
Addition: No  
Conversion: No

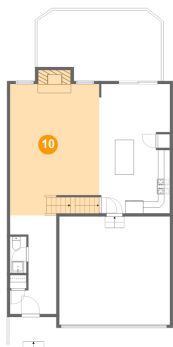
9 Floor 2 - Garage



Dimensions: 18'5" x 18'1"  
Area: 333 sq. ft  
Counted as living area: No

Heated: No  
Finished: No  
Enclosed: Yes  
Contiguous: Yes  
Permitted: Yes  
Wet space: No  
Addition: No  
Conversion: No

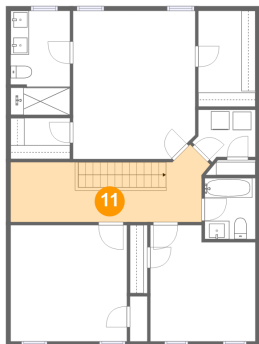
10 Floor 2 - Living Room



Dimensions: 14'10" x 21'11"  
Area: 334 sq. ft  
Counted as living area: Yes

Heated: Yes  
Finished: Yes  
Enclosed: Yes  
Contiguous: Yes  
Permitted: Yes  
Wet space: No  
Addition: No  
Conversion: No

11 Floor 3 - Hall

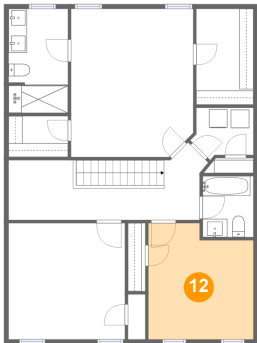


Dimensions: 21'9" x 8'5"  
Area: 140 sq. ft  
Counted as living area: Yes

Heated: Yes  
Finished: Yes  
Enclosed: Yes  
Contiguous: Yes  
Permitted: Yes  
Wet space: No  
Addition: No  
Conversion: No



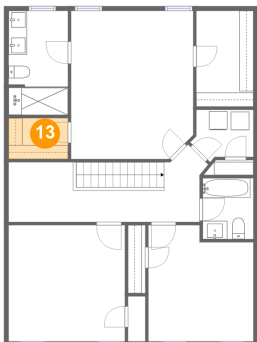
12 Floor 3 - Bedroom



Dimensions: 11'5" x 12'8"  
Area: 134 sq. ft  
Counted as living area: Yes

Heated: Yes  
Finished: Yes  
Enclosed: Yes  
Contiguous: Yes  
Permitted: Yes  
Wet space: No  
Addition: No  
Conversion: No

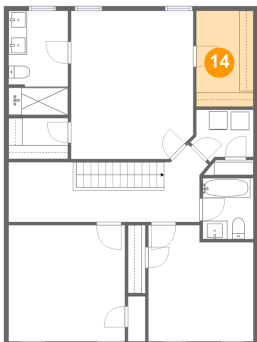
13 Floor 3 - W.I.C.



Dimensions: 6'6" x 4'5"  
Area: 29 sq. ft  
Counted as living area: Yes

Heated: Yes  
Finished: Yes  
Enclosed: Yes  
Contiguous: Yes  
Permitted: Yes  
Wet space: No  
Addition: No  
Conversion: No

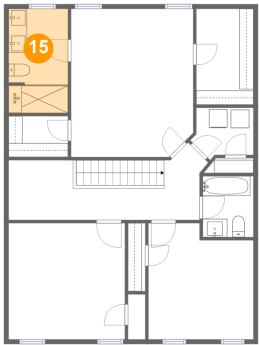
14 Floor 3 - W.I.C.



Dimensions: 6'2" x 10'5"  
Area: 65 sq. ft  
Counted as living area: Yes

Heated: Yes  
Finished: Yes  
Enclosed: Yes  
Contiguous: Yes  
Permitted: Yes  
Wet space: No  
Addition: No  
Conversion: No

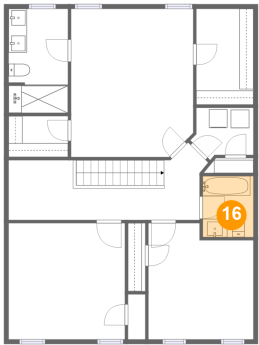
15 Floor 3 - Bath



Dimensions: 6'6" x 11'4"  
Area: 73 sq. ft  
Counted as living area: Yes

Heated: Yes  
Finished: Yes  
Enclosed: Yes  
Contiguous: Yes  
Permitted: Yes  
Wet space: Yes  
Addition: No  
Conversion: No

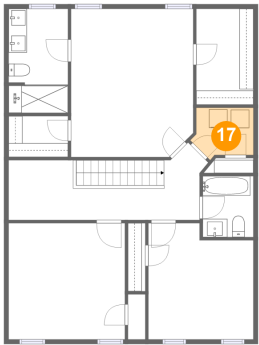
16 Floor 3 - Bath



Dimensions: 5'6" x 6'8"  
Area: 37 sq. ft  
Counted as living area: Yes

Heated: Yes  
Finished: Yes  
Enclosed: Yes  
Contiguous: Yes  
Permitted: Yes  
Wet space: Yes  
Addition: No  
Conversion: No

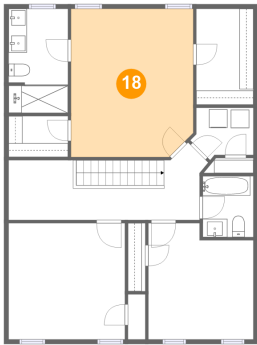
17 Floor 3 - Laundry



Dimensions: 6'10" x 5'8"  
Area: 32 sq. ft  
Counted as living area: Yes

Heated: Yes  
Finished: Yes  
Enclosed: Yes  
Contiguous: Yes  
Permitted: Yes  
Wet space: No  
Addition: No  
Conversion: No

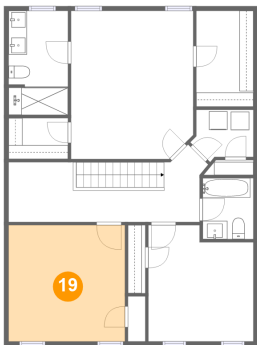
18 Floor 3 - Primary Bedroom



Dimensions: 13'4" x 16'2"  
Area: 211 sq. ft  
Counted as living area: Yes

Heated: Yes  
Finished: Yes  
Enclosed: Yes  
Contiguous: Yes  
Permitted: Yes  
Wet space: No  
Addition: No  
Conversion: No

19 Floor 3 - Bedroom



Dimensions: 12'8" x 12'8"  
Area: 160 sq. ft  
Counted as living area: Yes

Heated: Yes  
Finished: Yes  
Enclosed: Yes  
Contiguous: Yes  
Permitted: Yes  
Wet space: No  
Addition: No  
Conversion: No