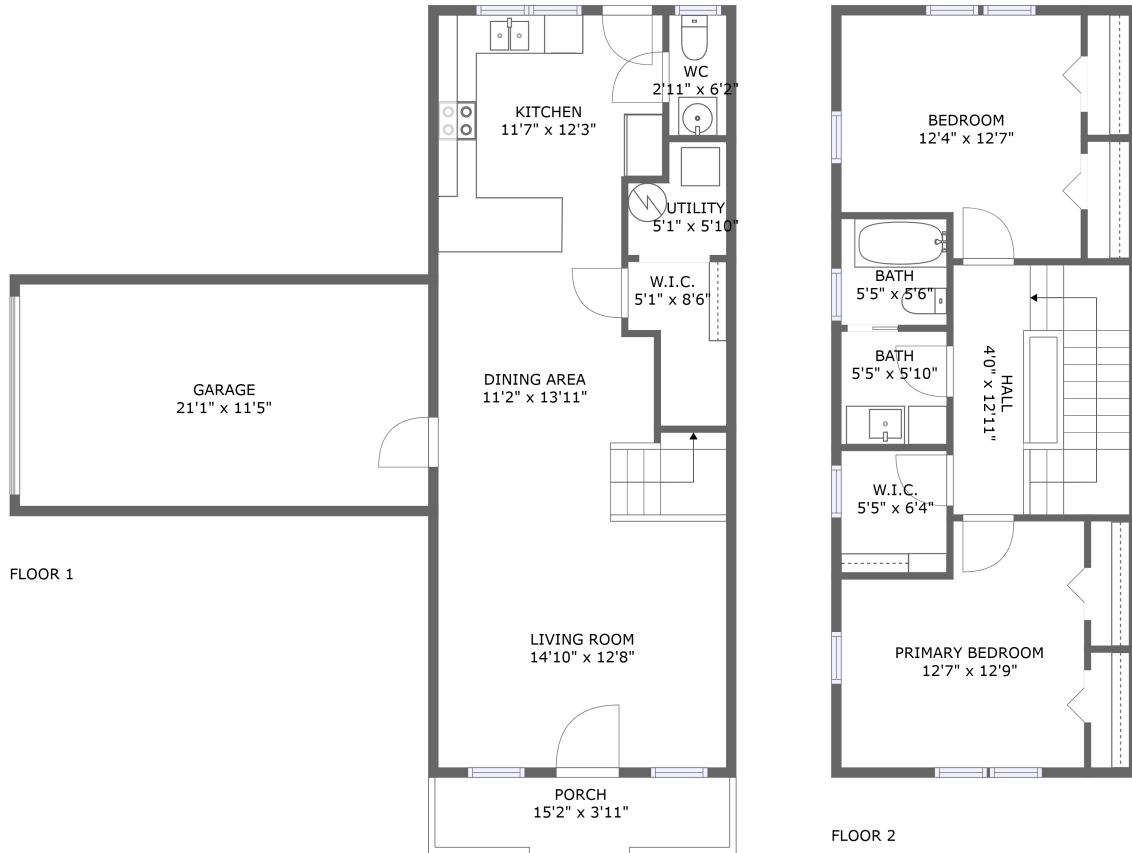
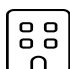







900-998 East Lander Street, Bonneville, Pocatello, Bannock County, Idaho, United States,

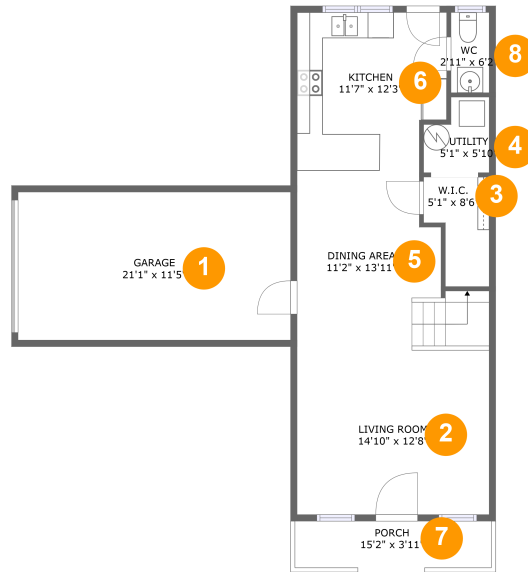


Property Summary

 **2** floors  **2** bedrooms  **1** bathrooms  **1,570** total sqft

 **1** garages  **1,244** Gross Living Area sqft

**900-998 East Lander Street, Bonneville,
Pocatello, Bannock County, Idaho, United States,**



Room Dimensions

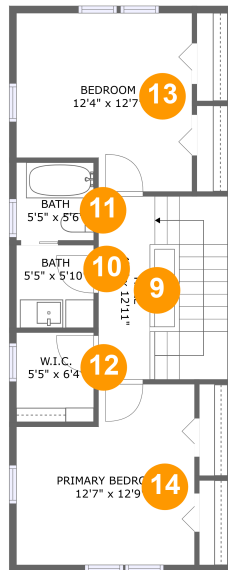
Floor 1

Total sqft: 948

Living area: 622

#	Room name	Dimensions	Area (sqft)	Counted as Living Area
1	Garage	21'1" x 11'5"	242 sq. ft	No
2	Living Room	14'10" x 12'8"	189 sq. ft	Yes
3	W.i.c.	5'1" x 8'6"	35 sq. ft	Yes
4	Utility	5'1" x 5'10"	25 sq. ft	Yes
5	Dining Area	11'2" x 13'11"	164 sq. ft	Yes
6	Kitchen	11'7" x 12'3"	133 sq. ft	Yes
7	Porch	15'2" x 3'11"	57 sq. ft	No
8	Wc	2'11" x 6'2"	18 sq. ft	Yes

900-998 East Lander Street, Bonneville, Pocatello, Bannock County, Idaho, United States,



Room Dimensions

Floor 2

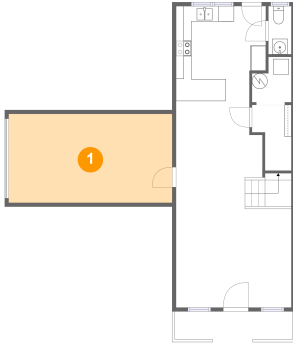
Total sqft: 622

Living area: 622

#	Room name	Dimensions	Area (sqft)	Counted as Living Area
9	Hall	4'0" x 12'11"	117 sq. ft	Yes
10	Bath	5'5" x 5'10"	32 sq. ft	Yes
11	Bath	5'5" x 5'6"	30 sq. ft	Yes
12	W.i.c.	5'5" x 6'4"	34 sq. ft	Yes
13	Bedroom	12'4" x 12'7"	142 sq. ft	Yes
14	Primary Bedroom	12'7" x 12'9"	142 sq. ft	Yes

900-998 East Lander Street, Bonneville, Pocatello, Bannock County, Idaho, United States,

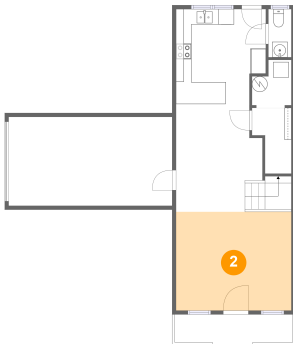
1 Floor 1 - Garage



Dimensions: 21'1" x 11'5"
Area: 242 sq. ft
Counted as Living Area: No

Heated: No
Finished: No
Enclosed: Yes
Contiguous: Yes
Permitted: Yes
Wet Space: No
Addition: No
Conversion: No

2 Floor 1 - Living Room

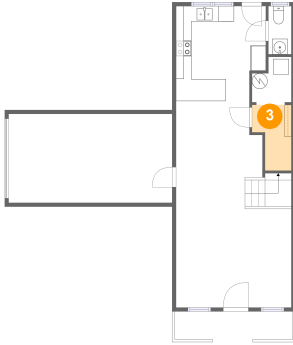


Dimensions: 14'10" x 12'8"
Area: 189 sq. ft
Counted as Living Area:
Yes

Heated: Yes
Finished: Yes
Enclosed: Yes
Contiguous:
Yes
Permitted: Yes
Wet Space: No
Addition: No
Conversion: No

900-998 East Lander Street, Bonneville, Pocatello, Bannock County, Idaho, United States,

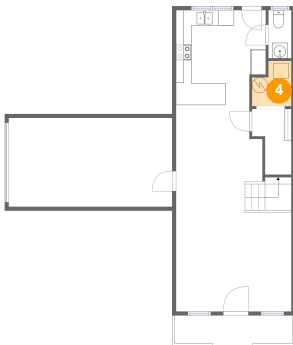
3 Floor 1 - W.i.c.



Dimensions: 5'1" x 8'6"
Area: 35 sq. ft
Counted as Living Area:
Yes

Heated: Yes
Finished: Yes
Enclosed: Yes
Contiguous:
Yes
Permitted: Yes
Wet Space: No
Addition: No
Conversion: No

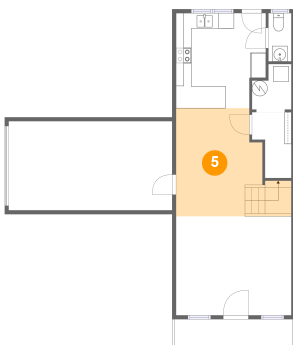
4 Floor 1 - Utility



Dimensions: 5'1" x 5'10"
Area: 25 sq. ft
Counted as Living Area:
Yes

Heated: Yes
Finished: Yes
Enclosed: Yes
Contiguous:
Yes
Permitted: Yes
Wet Space: No
Addition: No
Conversion: No

5 Floor 1 - Dining Area

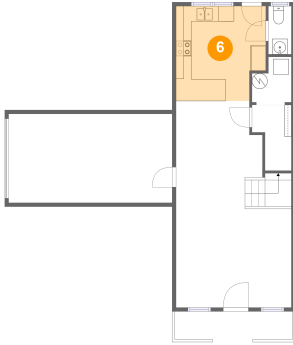


Dimensions: 11'2" x 13'11"
Area: 164 sq. ft
Counted as Living Area:
Yes

Heated: Yes
Finished: Yes
Enclosed: Yes
Contiguous:
Yes
Permitted: Yes
Wet Space: No
Addition: No
Conversion: No

**900-998 East Lander Street, Bonneville,
Pocatello, Bannock County, Idaho, United States,**

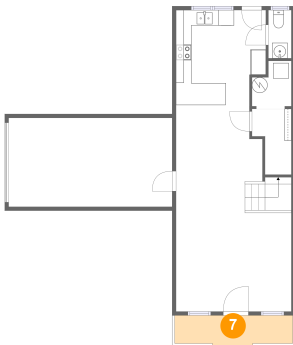
6 Floor 1 - Kitchen



Dimensions: 11'7" x 12'3"
Area: 133 sq. ft
Counted as Living Area:
Yes

Heated: Yes
Finished: Yes
Enclosed: Yes
Contiguous:
Yes
Permitted: Yes
Wet Space: No
Addition: No
Conversion: No

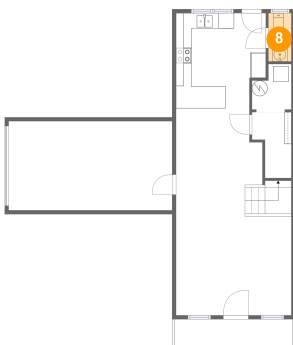
7 Floor 1 - Porch



Dimensions: 15'2" x 3'11"
Area: 57 sq. ft
Counted as Living Area: No

Heated: No
Finished: Yes
Enclosed: No
Contiguous: Yes
Permitted: Yes
Wet Space: No
Addition: No
Conversion: No

8 Floor 1 - Wc



Dimensions: 2'11" x 6'2"
Area: 18 sq. ft
Counted as Living Area:
Yes

Heated: Yes
Finished: Yes
Enclosed: Yes
Contiguous:
Yes
Permitted: Yes
Wet Space: Yes
Addition: No
Conversion: No

900-998 East Lander Street, Bonneville, Pocatello, Bannock County, Idaho, United States,

9 Floor 2 - Hall



Dimensions: 4'0" x 12'11"
Area: 117 sq. ft
Counted as Living Area:
Yes

Heated: Yes
Finished: Yes
Enclosed: Yes
Contiguous:
Yes
Permitted: Yes
Wet Space: No
Addition: No
Conversion: No

10 Floor 2 - Bath



Dimensions: 5'5" x 5'10"
Area: 32 sq. ft
Counted as Living Area:
Yes

Heated: Yes
Finished: Yes
Enclosed: Yes
Contiguous:
Yes
Permitted: Yes
Wet Space: Yes
Addition: No
Conversion: No

11 Floor 2 - Bath



Dimensions: 5'5" x 5'6"
Area: 30 sq. ft
Counted as Living Area:
Yes

Heated: Yes
Finished: Yes
Enclosed: Yes
Contiguous:
Yes
Permitted: Yes
Wet Space: Yes
Addition: No
Conversion: No

**900-998 East Lander Street, Bonneville,
Pocatello, Bannock County, Idaho, United States,**

12 Floor 2 - W.i.c.



Dimensions: 5'5" x 6'4"
Area: 34 sq. ft
Counted as Living Area:
Yes

Heated: Yes
Finished: Yes
Enclosed: Yes
Contiguous:
Yes
Permitted: Yes
Wet Space: No
Addition: No
Conversion: No

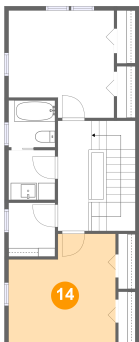
13 Floor 2 - Bedroom



Dimensions: 12'4" x 12'7"
Area: 142 sq. ft
Counted as Living Area:
Yes

Heated: Yes
Finished: Yes
Enclosed: Yes
Contiguous:
Yes
Permitted: Yes
Wet Space: No
Addition: No
Conversion: No

14 Floor 2 - Primary Bedroom



Dimensions: 12'7" x 12'9"
Area: 142 sq. ft
Counted as Living Area:
Yes

Heated: Yes
Finished: Yes
Enclosed: Yes
Contiguous:
Yes
Permitted: Yes
Wet Space: No
Addition: No
Conversion: No