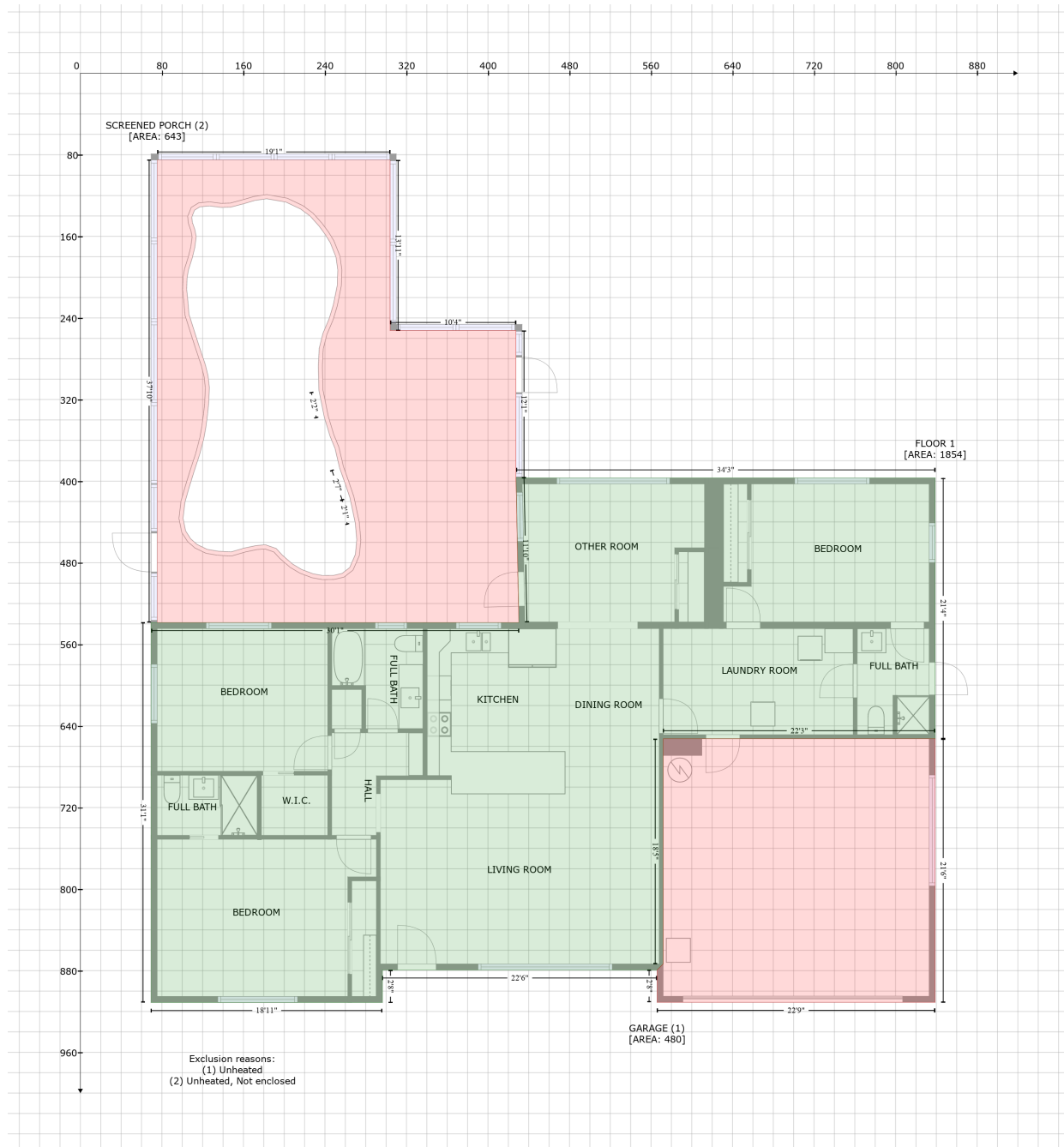


# 2909 Sunset Boulevard, Belleair Bluffs, Pinellas County, Florida, United States, 33770

Gross Living Area: 1854 sq. ft



Space	Area (sq. ft)	Calculation <small>Coordinate Polygon Area Algorithm using inches</small>
FLOOR 1 (Living area)	1854	$-\left((838.9 + 838.9) * (396.8 - 652.6) + (838.9 + 572) * (652.6 - 652.6) + (572 + 572) * (652.6 - 873.3) + (572 + 566) * (873.3 - 879.3) + (566 + 296.4) * (879.3 - 879.3) + (296.4 + 296.4) * (879.3 - 911.2) + (296.4 + 69.4) * (911.2 - 911.2) + (69.4 + 69.4) * (911.2 - 538.7) + (69.4 + 430.4) * (538.7 - 538.7) + (430.4 + 427.5) * (538.7 - 396.8) + (427.5 + 838.9) * (396.8 - 396.8)\right) * 0.5 * 0.00694$
GARAGE	480	$-\left((838.9 + 838.9) * (652.6 - 911) + (838.9 + 566) * (911 - 911) + (566 + 566) * (911 - 879.3) + \dots\right)$

# 2909 Sunset Boulevard, Belleair Bluffs, Pinellas County, Florida, United States, 33770

Gross Living Area: 1854 sq. ft

Space	Area (sq. ft)	Calculation <small>Coordinate Polygon Area Algorithm using inches</small>
(Non-living area)		$(566 + 572) * (879.3 - 873.3) + (572 + 572) * (873.3 - 652.6) + (572 + 838.9) * (652.6 - 652.6)) * 0.5 * 0.00694$
SCREENED PORCH (Non-living area)	643	$-((304 + 304) * (85.1 - 252.3) + (304 + 427.5) * (252.3 - 252.3) + (427.5 + 427.5) * (252.3 - 396.8) + (427.5 + 430.4) * (396.8 - 538.7) + (430.4 + 75.4) * (538.7 - 538.7) + (75.4 + 75.4) * (538.7 - 85.1) + (75.4 + 304) * (85.1 - 85.1)) * 0.5 * 0.00694 + -((182.9 + 171.2) * (123.1 - 124.8) + (171.2 + 159.9) * (124.8 - 128.1) + (159.9 + 147.7) * (128.1 - 131.3) + (147.7 + 138.1) * (131.3 - 131.7) + (138.1 + 126.7) * (131.7 - 130.2) + (126.7 + 117.3) * (130.2 - 131.1) + (117.3 + 112) * (131.1 - 134.4) + (112 + 109.4) * (134.4 - 141) + (109.4 + 109.9) * (141 - 146.3) + (109.9 + 112.4) * (146.3 - 153.5) + (112.4 + 113.7) * (153.5 - 160.5) + (113.7 + 112.3) * (160.5 - 171) + (112.3 + 109.8) * (171 - 181.2) + (109.8 + 106.1) * (181.2 - 192.8) + (106.1 + 104.7) * (192.8 - 200.7) + (104.7 + 104.3) * (200.7 - 212) + (104.3 + 105.7) * (212 - 226) + (105.7 + 106.6) * (226 - 236.3) + (106.6 + 111.3) * (236.3 - 251.2) + (111.3 + 116.1) * (251.2 - 266.5) + (116.1 + 122.7) * (266.5 - 285.9) + (122.7 + 125.3) * (285.9 - 296.8) + (125.3 + 126.6) * (296.8 - 308.4) + (126.6 + 125.8) * (308.4 - 323.7) + (125.8 + 123.2) * (323.7 - 346.6) + (123.2 + 121.1) * (346.6 - 358.4) + (121.1 + 117) * (358.4 - 374) + (117 + 111.5) * (374 - 390.7) + (111.5 + 106.3) * (390.7 - 407.6) + (106.3 + 102.6) * (407.6 - 420.6) + (102.6 + 100.8) * (420.6 - 436.4) + (100.8 + 103.3) * (436.4 - 448.8) + (103.3 + 108.2) * (448.8 - 456.5) + (108.2 + 114.6) * (456.5 - 462.1) + (114.6 + 124.5) * (462.1 - 466.9) + (124.5 + 135.1) * (466.9 - 468.7) + (135.1 + 148) * (468.7 - 469.4) + (148 + 160.5) * (469.4 - 465.7) + (160.5 + 172.8) * (465.7 - 463.1) + (172.8 + 181.7) * (463.1 - 462.4) + (181.7 + 192.2) * (462.4 - 466) + (192.2 + 198.2) * (466 - 472.6) + (198.2 + 208.2) * (472.6 - 481.3) + (208.2 + 217.2) * (481.3 - 486.6) + (217.2 + 228.3) * (486.6 - 490.8) + (228.3 + 237.7) * (490.8 - 492.5) + (237.7 + 248.7) * (492.5 - 492.4) + (248.7 + 257) * (492.4 - 490.4) + (257 + 264.3) * (490.4 - 484.7) + (264.3 + 269.9) * (484.7 - 471.9) + (269.9 + 271.2) * (471.9 - 457.4) + (271.2 + 269.8) * (457.4 - 441) + (269.8 + 264.6) * (441 - 416.5) + (264.6 + 254.3) * (416.5 - 386.8) + (254.3 + 249.9) * (386.8 - 368.1) + (249.9 + 244.9) * (368.1 - 355.8) + (244.9 + 244.8) * (355.8 - 355.1) + (244.8 + 239.4) * (355.1 - 336.8) + (239.4 + 234.4) * (336.8 - 311.5) + (234.4 + 234) * (311.5 - 310.7) + (234 + 233.5) * (310.7 - 287.5) + (233.5 + 234.4) * (287.5 - 269.8) + (234.4 + 238) * (269.8 - 255.2) + (238 + 244.2) * (255.2 - 240.6) + (244.2 + 249) * (240.6 - 223.6) + (249 + 252.1) * (223.6 - 208) + (252.1 + 252.6) * (208 - 193) + (252.6 + 250.9) * (193 - 180.4) + (250.9 + 245.2) * (180.4 - 166.1) + (245.2 + 240.4) * (166.1 - 158.3) + (240.4 + 234.2) * (158.3 - 149.8) + (234.2 + 225.5) * (149.8 - 140.1) + (225.5 + 216.2) * (140.1 - 133.3) + (216.2 + 201.8) * (133.3 - 126.4) + (201.8 + 196.6) * (126.4 - 125.7) + (196.6 + 182.9) * (125.7 - 123.1)) * 0.5 * 0.00694$