

Home report

Addison Cir 1040
Petaluma

Highlights



1 Kitchen



1 Living room



2 Bedroom



3 Bath



15 Doors



9 Windows

Nearby services Data source: Google Maps



Petaluma Blvd N & Stony Point, 0.1 mi



South City Market, 0.1 mi



The Bernstein Institute, 0.5 mi



The Spring Hill School- A Toddler through 8th Grade Independent School, 0.3 mi

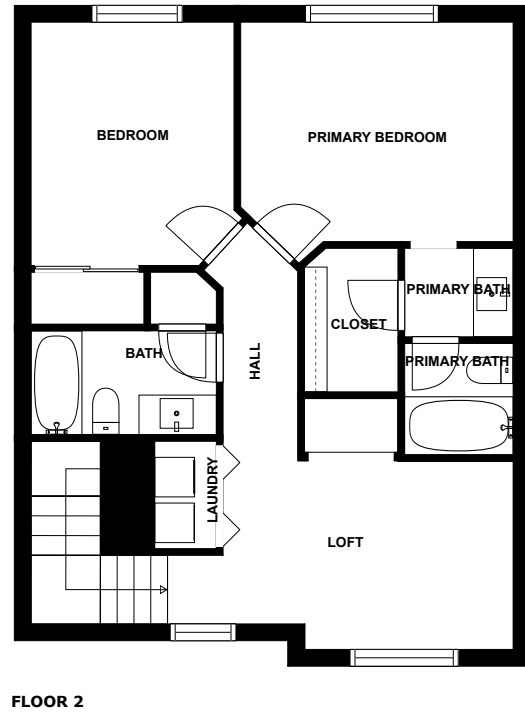
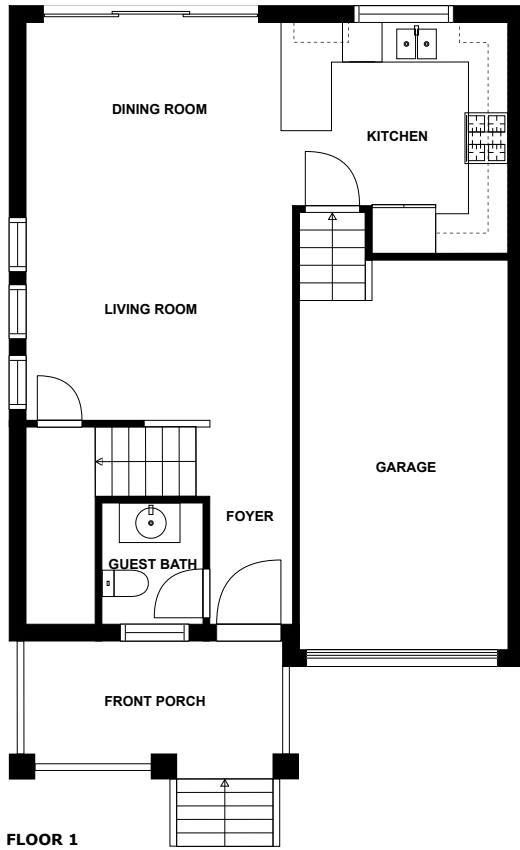


Mr. Mom's Cafe, 0.1 mi



Emergency Room Helipad, 1.9 mi

Floor plan



SIZES AND DIMENSIONS ARE APPROXIMATE. ACTUAL MAY VARY SLIGHTLY.

Appendix 1: Data sheet

Garage - 1	Kitchen - 1	Entry - 1
Entry - Foyer - 1	LivingRoom - 1	Dining - 1
Utility - 1	Utility - Laundry - 1	Bath - 3
Bath - Master - 2	Bedroom - 2	Bedroom - Master - 1
Hall - 1	Loft - 1	