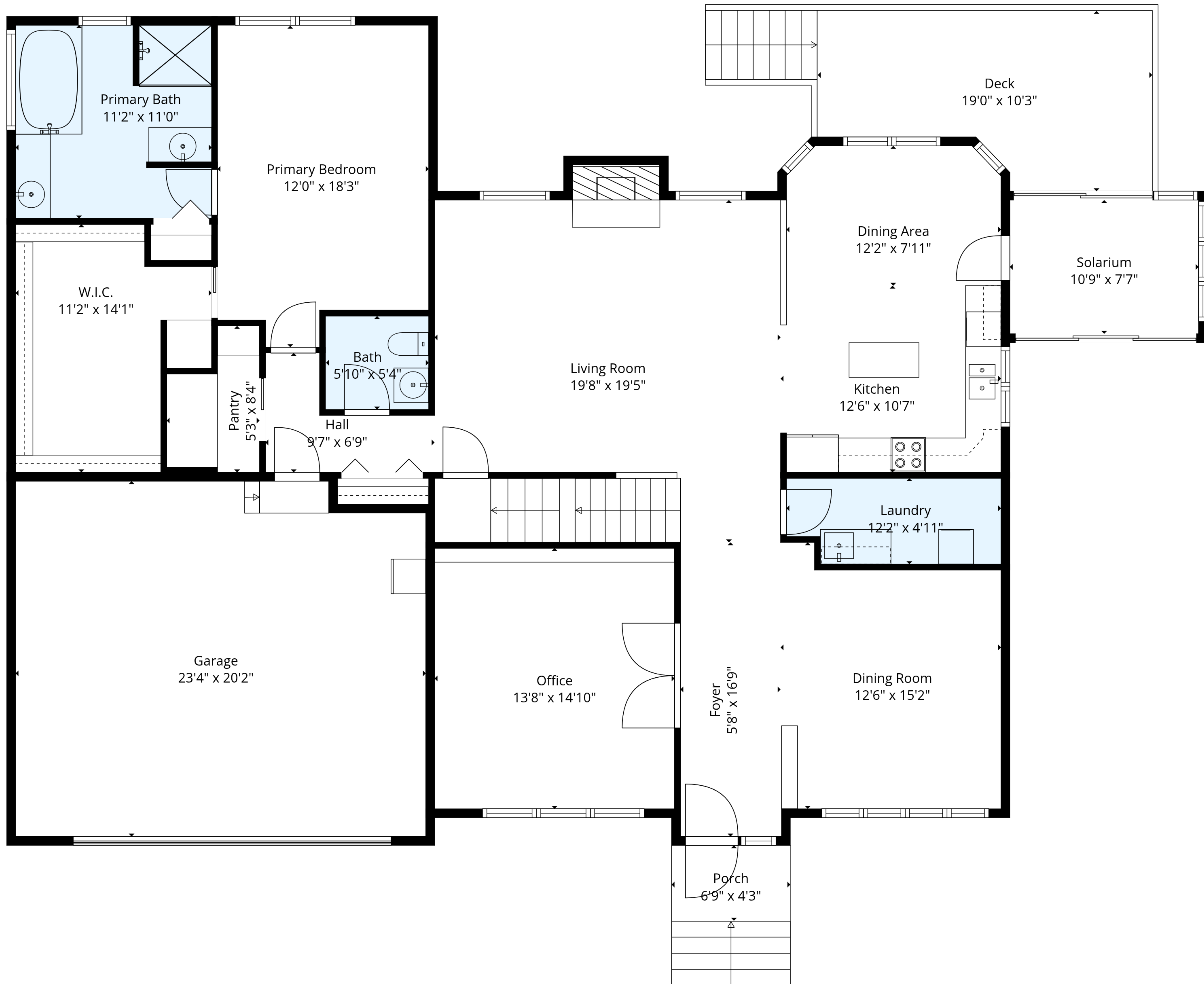


TOTAL: 3143 sq. ft

Basement 1: 268 sq. ft, 1st floor: 1781 sq. ft, 2nd floor: 1094 sq. ft
EXCLUDED AREAS: BASEMENT: 1430 sq. ft, HALF BATH: 42 sq. ft, PORCH: 54 sq. ft,
DECK: 189 sq. ft, GARAGE: 461 sq. ft, SOLARIUM: 82 sq. ft,
OPEN TO BELOW: 408 sq. ft, ATTIC | STORAGE: 211 sq. ft, LOW CEILING: 138 sq. ft,
WALLS: 344 sq. ft

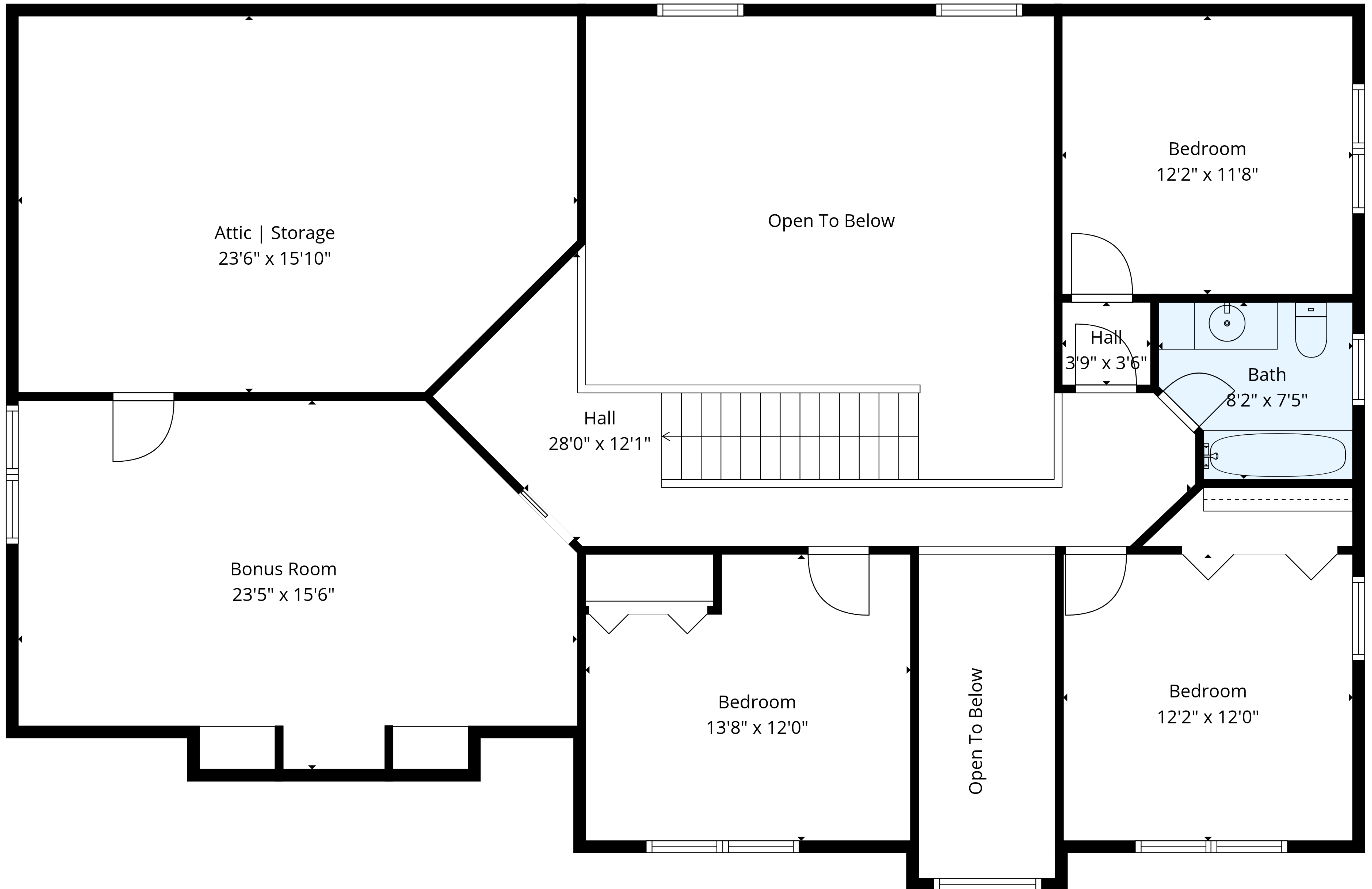




TOTAL: 3143 sq. ft

Basement 1: 268 sq. ft, 1st floor: 1781 sq. ft, 2nd floor: 1094 sq. ft
 EXCLUDED AREAS: BASEMENT: 1430 sq. ft, HALF BATH: 42 sq. ft, PORCH: 54 sq. ft,
 DECK: 189 sq. ft, GARAGE: 461 sq. ft, SOLARIUM: 82 sq. ft,
 OPEN TO BELOW: 408 sq. ft, ATTIC | STORAGE: 211 sq. ft, LOW CEILING: 138 sq. ft,
 WALLS: 344 sq. ft

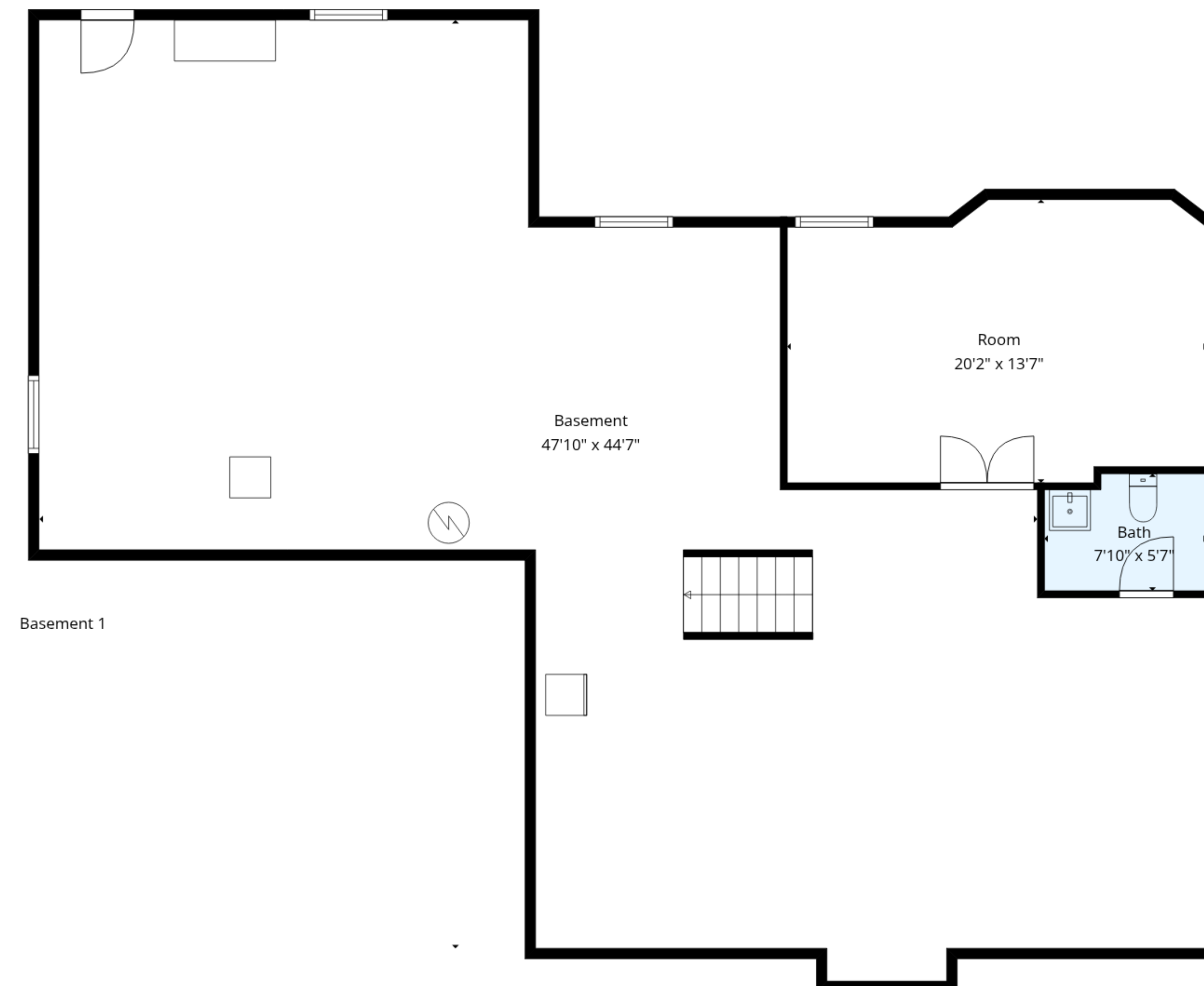
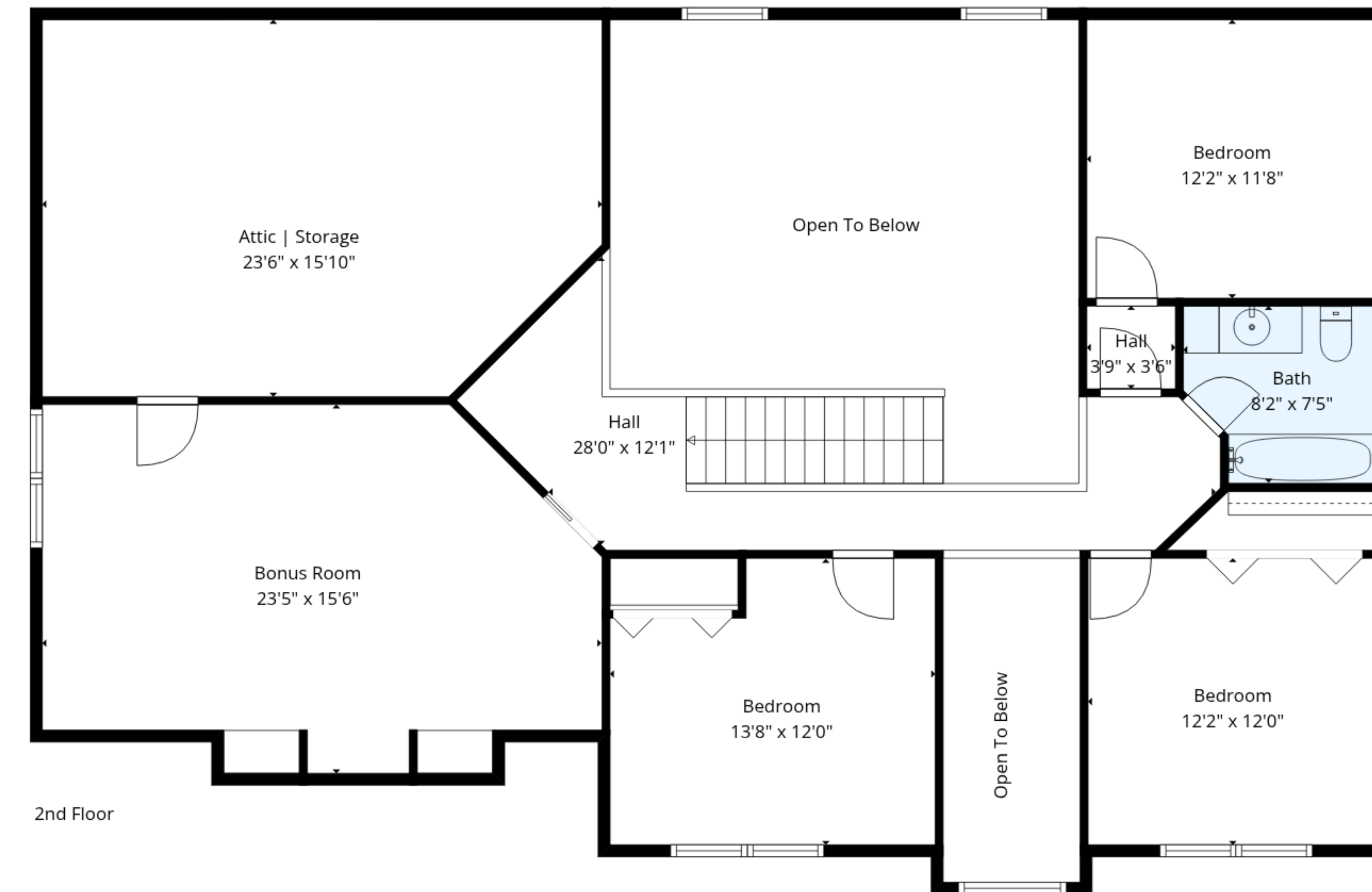
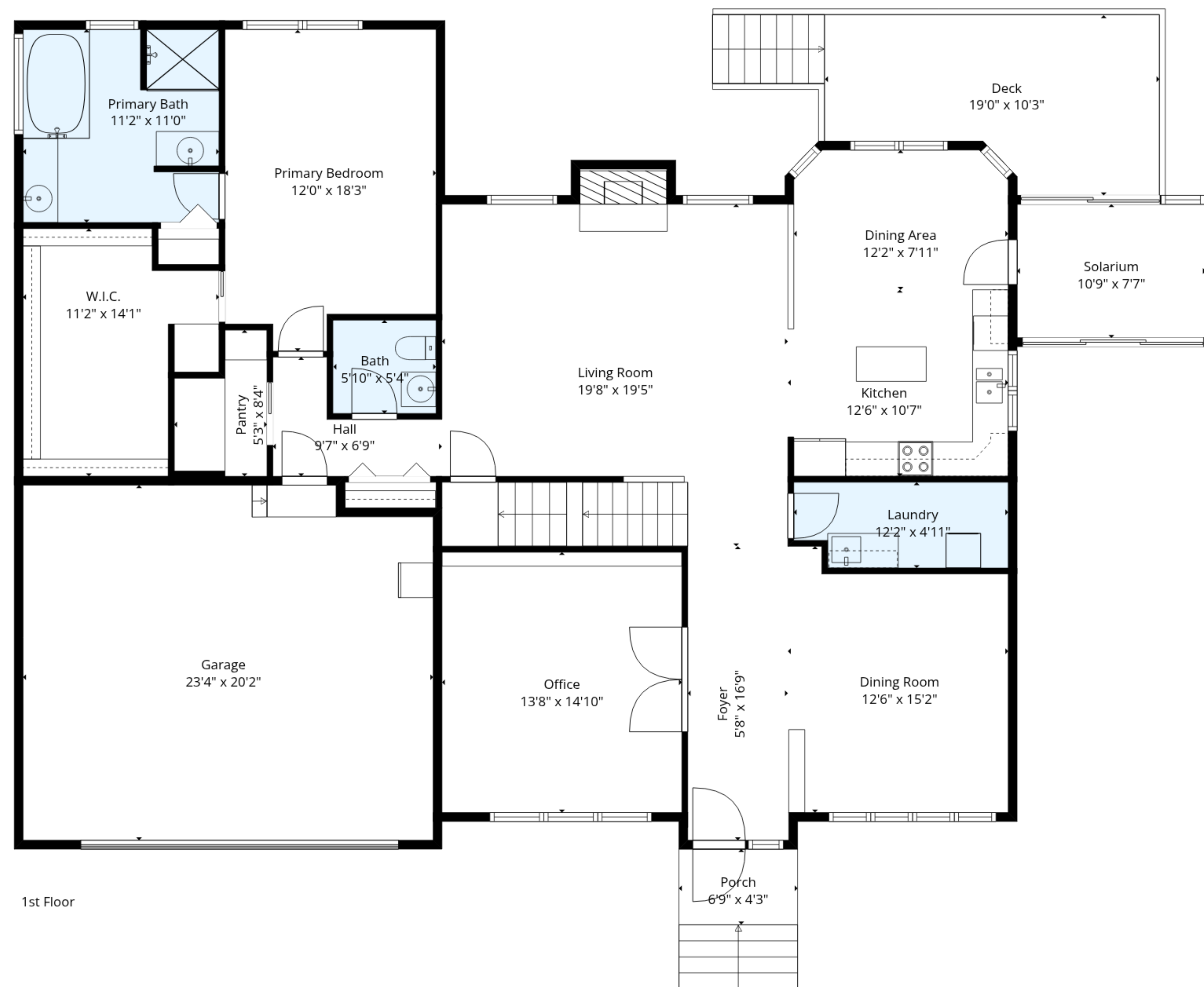




TOTAL: 3143 sq. ft

Basement 1: 268 sq. ft, 1st floor: 1781 sq. ft, 2nd floor: 1094 sq. ft
EXCLUDED AREAS: BASEMENT: 1430 sq. ft, HALF BATH: 42 sq. ft, PORCH: 54 sq. ft,
DECK: 189 sq. ft, GARAGE: 461 sq. ft, SOLARIUM: 82 sq. ft,
OPEN TO BELOW: 408 sq. ft, ATTIC | STORAGE: 211 sq. ft, LOW CEILING: 138 sq. ft,
WALLS: 344 sq. ft





TOTAL: 3143 sq. ft

Basement 1: 268 sq. ft, 1st floor: 1781 sq. ft, 2nd floor: 1094 sq. ft
 EXCLUDED AREAS: BASEMENT: 1430 sq. ft, HALF BATH: 42 sq. ft, PORCH: 54 sq. ft,
 DECK: 189 sq. ft, GARAGE: 461 sq. ft, SOLARIUM: 82 sq. ft,
 OPEN TO BELOW: 408 sq. ft, ATTIC | STORAGE: 211 sq. ft, LOW CEILING: 138 sq. ft,
 WALLS: 344 sq. ft

