

Home report

609 East Chestnut Street, Lancaster, Lancaster County,
Pennsylvania, United States, 17602



Total Area: 1524 sq. ft

Below Ground: 21 sq. ft, Floor 2: 589 sq. ft, Floor 3: 614 sq. ft, Floor 4: 300 sq. ft

Excluded: Basement 466 sq. ft, Room 52 sq. ft, Outdoor Porch 103 sq. ft, Low Ceiling 46 sq. ft, Walls: 237 sq. ft

Property summary

**4** Floors

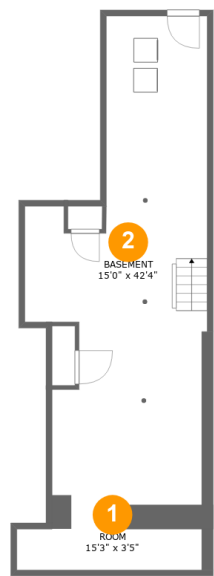
**3** Bedrooms

**1** Bathrooms

**1** Half baths

Home report

609 East Chestnut Street, Lancaster, Lancaster County,
Pennsylvania, United States, 17602



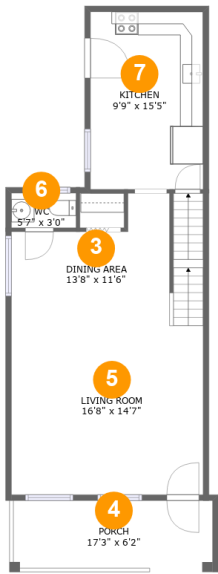
Room dimensions

Floor 1 Below ground Total:21sqft Excluded: 518sqft

#		Max Dimensions	sqft	Included
1	Room	15'3" x 3'5"	52 sq. ft	No
2	Basement	15'0" x 42'4"	450 sq. ft	No

Home report

609 East Chestnut Street, Lancaster, Lancaster County,
Pennsylvania, United States, 17602



Room dimensions

Floor 2 Total:589sqft Excluded: 103sqft

#		Max Dimensions	sqft	Included
3	Dining Area	13'8" x 11'6"	125 sq. ft	Yes
4	Porch	17'3" x 6'2"	103 sq. ft	No
5	Living Room	16'8" x 14'7"	274 sq. ft	Yes
6	WC	5'7" x 3'0"	17 sq. ft	Yes
7	Kitchen	9'9" x 15'5"	151 sq. ft	Yes

Home report

609 East Chestnut Street, Lancaster, Lancaster County,
Pennsylvania, United States, 17602



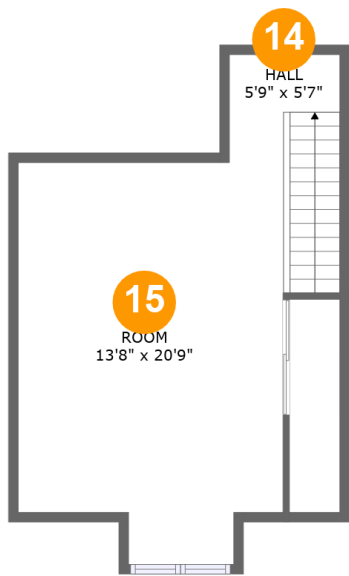
Room dimensions

Floor 3 Total:614sqft Excluded: 0sqft

#		Max Dimensions	sqft	Included
8	Bath	6'7" x 6'7"	37 sq. ft	Yes
9	Bedroom	10'7" x 13'0"	137 sq. ft	Yes
10	Primary Bedroom	16'8" x 13'8"	203 sq. ft	Yes
11	Hall	2'7" x 3'7"	9 sq. ft	Yes
12	Bedroom	9'9" x 8'4"	82 sq. ft	Yes
13	Hall	5'9" x 19'1"	102 sq. ft	Yes

Home report

609 East Chestnut Street, Lancaster, Lancaster County,
Pennsylvania, United States, 17602

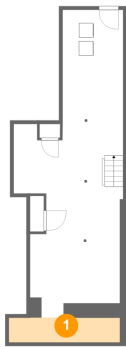


Room dimensions

Floor 4 Total:300sqft Excluded: 46sqft

#		Max Dimensions	sqft	Included
14	Hall	5'9" x 5'7"	52 sq. ft	Yes
15	Room	13'8" x 20'9"	221 sq. ft	Yes

1 Floor 1 - Room



Max Dimensions: 15'3" x 3'5"
Calculated Area: 52 sq. ft
Included: No

Heated: Yes
Finished: No
Enclosed: Yes
Contiguous: Yes
Permitted: Yes
Wet space: No
Addition: No
Conversion: No

2 Floor 1 - Basement



Max Dimensions: 15'0" x 42'4"
Calculated Area: 450 sq. ft
Included: No

Heated: Yes
Finished: No
Enclosed: Yes
Contiguous: Yes
Permitted: Yes
Wet space: No
Addition: No
Conversion: No

3 Floor 2 - Dining Area



Max Dimensions: 13'8" x 11'6"
Calculated Area: 125 sq. ft
Included: Yes

Heated: Yes
Finished: Yes
Enclosed: Yes
Contiguous: Yes
Permitted: Yes
Wet space: No
Addition: No
Conversion: No

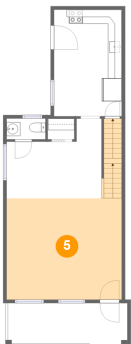
4 Floor 2 - Porch



Max Dimensions: 17'3" x 6'2"
Calculated Area: 103 sq. ft
Included: No

Heated: No
Finished: Yes
Enclosed: No
Contiguous: Yes
Permitted: Yes
Wet space: No
Addition: No
Conversion: No

5 Floor 2 - Living Room



Max Dimensions: 16'8" x 14'7"
Calculated Area: 274 sq. ft
Included: Yes

Heated: Yes
Finished: Yes
Enclosed: Yes
Contiguous: Yes
Permitted: Yes
Wet space: No
Addition: No
Conversion: No

609 East Chestnut Street, Lancaster, Lancaster County,
Pennsylvania, United States, 17602

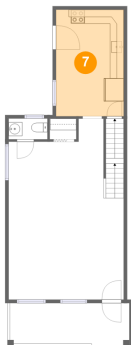
6 Floor 2 - WC



Max Dimensions: 5'7" x 3'0"
Calculated Area: 17 sq. ft
Included: Yes

Heated: Yes
Finished: Yes
Enclosed: Yes
Contiguous: Yes
Permitted: Yes
Wet space: Yes
Addition: No
Conversion: No

7 Floor 2 - Kitchen



Max Dimensions: 9'9" x
15'5"
Calculated Area: 151 sq. ft
Included: Yes

Heated: Yes
Finished: Yes
Enclosed: Yes
Contiguous:
Yes
Permitted: Yes
Wet space: No
Addition: No
Conversion: No

8 Floor 3 - Bath



Max Dimensions: 6'7" x 6'7"
Calculated Area: 37 sq. ft
Included: Yes

Heated: Yes
Finished: Yes
Enclosed: Yes
Contiguous: Yes
Permitted: Yes
Wet space: Yes
Addition: No
Conversion: No

9 Floor 3 - Bedroom



Max Dimensions: 10'7" x 13'0"
Calculated Area: 137 sq. ft
Included: Yes

Heated: Yes
Finished: Yes
Enclosed: Yes
Contiguous: Yes
Permitted: Yes
Wet space: No
Addition: No
Conversion: No

10 Floor 3 - Primary Bedroom



Max Dimensions: 16'8" x 13'8"
Calculated Area: 203 sq. ft
Included: Yes

Heated: Yes
Finished: Yes
Enclosed: Yes
Contiguous: Yes
Permitted: Yes
Wet space: No
Addition: No
Conversion: No

11 Floor 3 - Hall



Max Dimensions: 2'7" x 3'7"
Calculated Area: 9 sq. ft
Included: Yes

Heated: Yes
Finished: Yes
Enclosed: Yes
Contiguous: Yes
Permitted: Yes
Wet space: No
Addition: No
Conversion: No

609 East Chestnut Street, Lancaster, Lancaster County,
Pennsylvania, United States, 17602

12 Floor 3 - Bedroom



Max Dimensions: 9'9" x 8'4"
Calculated Area: 82 sq. ft
Included: Yes

Heated: Yes
Finished: Yes
Enclosed: Yes
Contiguous: Yes
Permitted: Yes
Wet space: No
Addition: No
Conversion: No

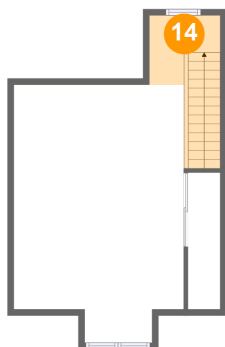
13 Floor 3 - Hall



Max Dimensions: 5'9" x 19'1"
Calculated Area: 102 sq. ft
Included: Yes

Heated: Yes
Finished: Yes
Enclosed: Yes
Contiguous: Yes
Permitted: Yes
Wet space: No
Addition: No
Conversion: No

14 Floor 4 - Hall



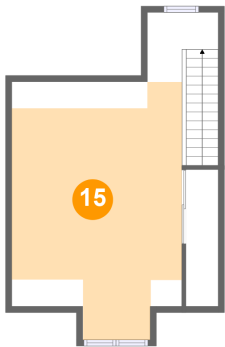
Max Dimensions: 5'9" x 5'7"
Calculated Area: 52 sq. ft
Included: Yes

Heated: Yes
Finished: Yes
Enclosed: Yes
Contiguous: Yes
Permitted: Yes
Wet space: No
Addition: No
Conversion: No

Home report

609 East Chestnut Street, Lancaster, Lancaster County,
Pennsylvania, United States, 17602

15 Floor 4 - Room



Max Dimensions: 13'8" x 20'9"
Calculated Area: 221 sq. ft
Included: Yes

Heated: Yes
Finished: Yes
Enclosed: Yes
Contiguous: Yes
Permitted: Yes
Wet space: No
Addition: No
Conversion: No